



The Gift of Health Program

2007 - 2009 Statistics

Account Balance: \$ 9,126.00

2007 Statistics:

Total Enrolled: 21 children were selected and 19 children were enrolled into insurance programs.

Total amount of premiums paid: \$1,300.00.

Program Breakdown: 10 children were selected for Kaiser Permanente's Child Health Plan, 10 children for Healthy Families and one child was selected for California Kids.

Financial Need:

7 children were at or below the 100% FPL

8 children fell between the 100-150% FPL

4 children fell between 150-200% FPL

2 children fell between 200-250% FPL

Medical Conditions: Of the 21 children selected in 2007, the most common medical condition was asthma. Other health problems were epilepsy, vision problems, tumors and congenital abnormalities.

Fundraising: \$3,000 was raised from individual sponsors and through fundraisers.

Partnership: CHIP developed relationships with San Ysidro Health Center and Family Health Centers of San Diego to increase the number of Gift of Health applications and enrollment of children into health insurance programs.

2008 Statistics (data taken from 1/2008 - 11/24/2008):

Total Enrolled:

37 children were selected; all 37 children were enrolled into insurance programs. Total amount of premiums paid: \$4,440.00.

Program Breakdown:

36 Children were selected for Healthy Families, one child was selected for Kaiser Permanente's Child Health Plan.

Financial Need:

0 children were at or below the 100% FPL

18 children fell between the 100-150% FPL

16 children fell between the 150-200% FPL

3 children fell between the 200-250% FPL

Medical Conditions: The most common medical condition continues to be asthma. Some children reported multiple chronic conditions, such as asthma and vision problems. Other reported health problems were ADD/ADHD, cerebral palsy, hearing loss, obesity related issues, vision problems, cancer, heart murmur, developmental problems and premature birth related problems.

Fundraising: \$1,100.00 was raised from individual donors and fundraising efforts.

Partnership: Access to Care Project Manager conducted Gift of Health education and outreach activities to San Diego Unified School District - School Nurses and Medi-Cal Collaborative; SD-KHAN, CAA Staff, North County Health Services, San Ysidro Health Center, Community Partners for Wellness and SAY San Diego.

2009 Statistics (data taken from 11/25/2008 - present):

Total Enrolled: 46 children were selected and 46 children have been enrolled into insurance programs.

Total amount of premiums paid: \$5,172.00.

Program Breakdown: 45 children were selected for Healthy Families, one child was selected for California Kids.

Financial Need:

11 children were at or below the 100% FPL

26 children fell between the 100-150% FPL

5 children fell between the 150-200% FPL

2 children fell between the 200-250% FPL

2 children were at or above the 250% FPL

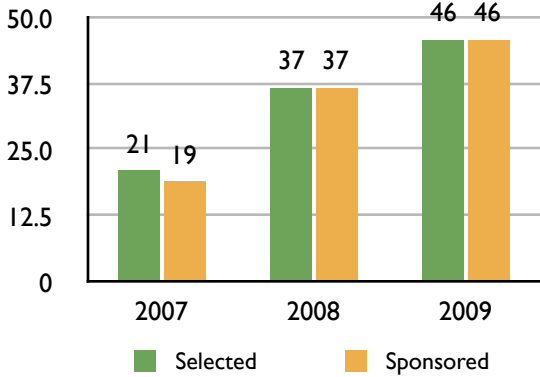
Medical Conditions: The most common medical condition continues to be asthma. Multiple children suffered from Treacher Collins Syndrome, diabetes and autism. Other reported health problems were ADHD, cancer, hearing loss, HSMA, nasal tissue mass, cornea ailments and scoliosis.

Fundraising: Local grocery store fundraisers, cell phone donations and individual contributions have raised \$311.48 to date.

Partnership: CHIP is involved in several fundraising opportunities throughout the community, including Ralph and Albertson's community contribution programs and cell phone donation programs. In addition, CHIP staff has applied for community fundraising programs through Whole Foods, Henry's Farmers Market and Target.

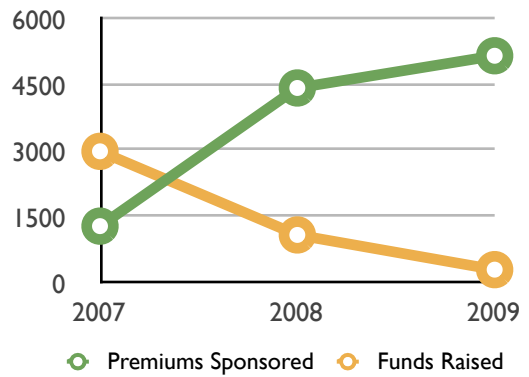
The Gift of Health Program 2007 - 2009 Comparison

CHILDREN SELECTED VS. SPONSORED



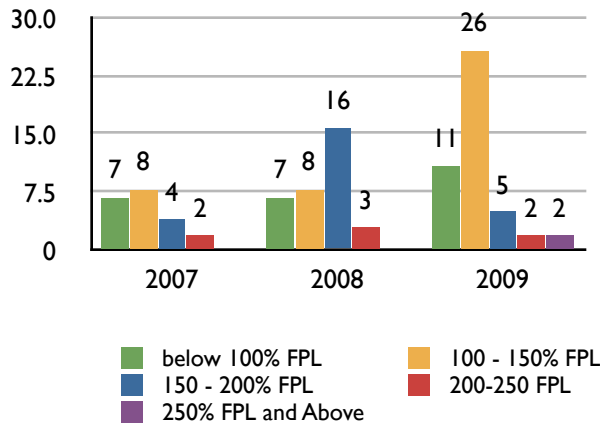
	2007	2008	2009
SELECTED	21	37	46
SPONSORED	19	37	46

PREMIUMS SPONSORED VS. FUNDS RAISED



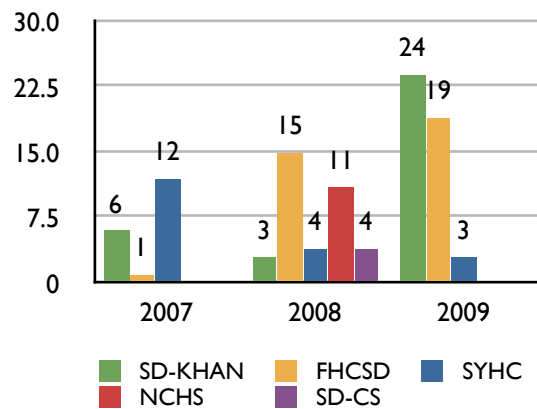
	2007	2008	2009
PREMIUMS SPONSORED	\$1,300	\$4,440	\$5,172
FUNDS RAISED	\$3,000	\$1,100	\$311

CHILDREN SPONSORED BASED ON FPL



	2007	2008	2009
BELOW 100%	7	7	11
100 - 150%	8	8	26
150 - 200%	4	16	5
200-250%	2	3	2
250% AND ABOVE	0	0	2

REFERRALS BY ORGANIZATION



	2007	2008	2009
SD-KHAN	6	3	24
FHCS	1	15	19
SYHC	12	4	3
NCHS	0	11	0
SD-CS	0	4	0

Themes in medical conditions:

Asthma remains the most common chronic medical condition reported; diabetes, autism, ADD/ADHD and Treacher Collins Syndrome were also reported multiple times throughout 2007 - 2009.