



Crime in the San Diego Region in 2004

April 2005

Criminal Justice Research Division



401 B Street
Suite 800
San Diego, CA 92101
(619) 699-1900

CRIME IN THE SAN DIEGO REGION IN 2004

INTRODUCTION

Since 1980, SANDAG has been reporting regional crime statistics for the San Diego region through a cooperative agreement with local law enforcement agencies. This current report includes crime data reported in 2004 and compares these statistics to those from one, five, ten, and twenty years earlier. Crime rates per 1,000 population¹, as well as the actual number of crimes reported, are presented. SANDAG is the only local entity to compile these statistics across the 18 incorporated cities, as well as the unincorporated areas of the county, making this information one of the most frequently requested from the Clearinghouse. These data are useful to local law enforcement agencies as they track the effectiveness of their prevention and response efforts on regional crime rates.

In previous years, annual reports were distributed in the spring, which described crime reported in the previous calendar year. Starting in 2004, the Criminal Justice Research Division began to transition to shorter research bulletins which can be produced in a more timely fashion and are more concise and descriptive. For those interested in more detailed 2004 statistics, please contact Donna Allnutt at (619) 699-6912 and, for those interested in more recent statistics for a specific area of San Diego County, please visit the ARJIS (Automated Regional Justice Information System) Web site at www.arjis.org.

¹ The populations used to calculate rates are provided in Appendix Table 8.

FAST FACTS

- One in 217 San Diego County residents was the victim of a violent crime in 2004. One in 31 was the victim of a property crime.
- The 2004 violent crime rate of 4.6 was the lowest in the past 20 years.
- Robbery was the only violent crime to *increase* from 2003 to 2004 (by 6%). Homicide, rape, and assault all decreased.
- The use of firearms in robberies decreased over the past five years, but increased for aggravated assaults.
- After three years of increases, the property crime rate decreased slightly from 2003 (from 32.5 per 1,000 population to 32.3).
- Burglary was the only property crime to *decrease* from 2003 to 2004 (by 7%), while larceny and motor vehicle theft both increased.
- About half (51%) of violent crimes and 13 percent of property crimes were cleared in 2004.

OVERALL CRIME

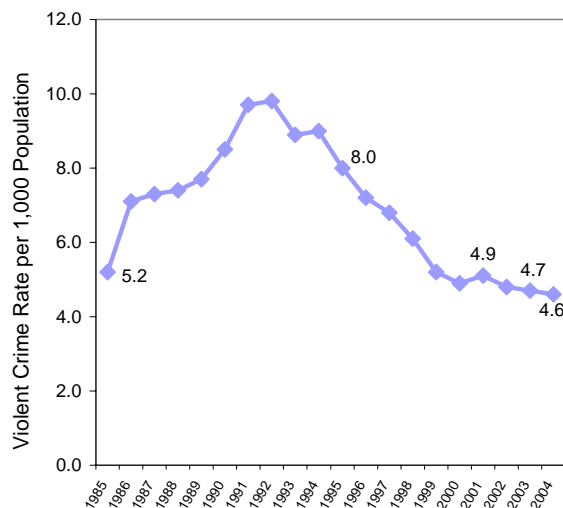
There was a total of 111,266 Part I (or FBI Index) crimes in the San Diego region in 2004 (Appendix Tables 1 and 5), which equated to 36.9 crimes per 1,000 population (Appendix Table 2). Part I crimes include four violent offenses (homicide, rape, robbery, and aggravated assault) and three property offenses (burglary, larceny, and motor vehicle

theft) that are tracked nationwide in a standardized way by the FBI, with agencies submitting crime data through the Uniform Crime Reporting (UCR) system.

VIOLENT CRIME

There were 13,880 Part I violent crimes reported to law enforcement in the region in 2004 (Appendix Table 6). This equated to 4.6 violent crimes per 1,000 residents and was a two percent decrease from 2003 (when the rate was 4.7) (Figure 1). In fact, the 2004 violent crime rate was the lowest in the last 20 years, despite a slight increase in violent crime that was reported in the first six months of the year. The most common type of violent crime was aggravated assault, which represented about two-thirds (67%) of violent crime in 2004 (robbery represented 26%, rape 6%, and homicide 1%) (not shown).

Figure 1
VIOLENT CRIME RATE LOWEST IN TWENTY YEARS



SOURCES: SANDAG; California Department of Finance; U.S. Census 1990; U.S. Census 2000

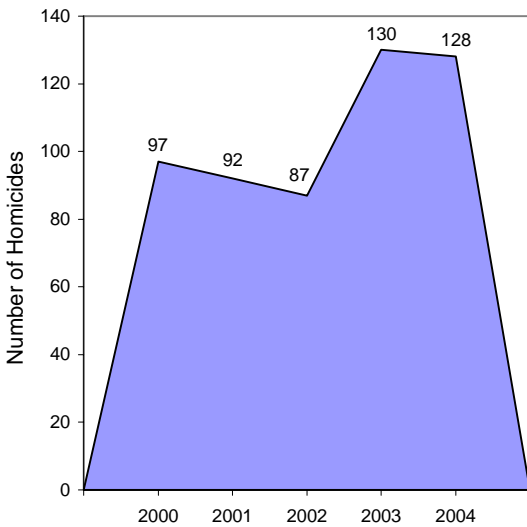
Across the jurisdictions, 16 areas had higher and 7 had lower violent crime rates, compared to 2003 (and 2 had no change) (Appendix Table 3). In the three areas with the greatest one-year increase (Imperial Beach, Santee, and Vista), a rise in the number of robberies was most responsible for this trend. However, as noted at mid-year 2004, data entry delays in 2003 at the Sheriff's Department jurisdictions related to budget constraints and hiring freezes (which since have been resolved) also account for at least some of the increases in these and other Sheriff's jurisdictions. It also should be noted that the large increases in violent crime in Del Mar and Solana Beach reflected a relatively small number of violent crimes reported in those jurisdictions in the two comparison years (10 versus 13 in Del Mar and 20 versus 36 in Solana Beach).

Each jurisdiction also documents violent crime committed against senior citizens. In 2004, there were 463 violent crimes against senior citizens, an increase of eleven percent from the previous year (but an 8% decrease from five years earlier). These crimes included 11 homicides, 10 rapes, 186 robberies, and 256 aggravated assaults (not shown).

Homicide

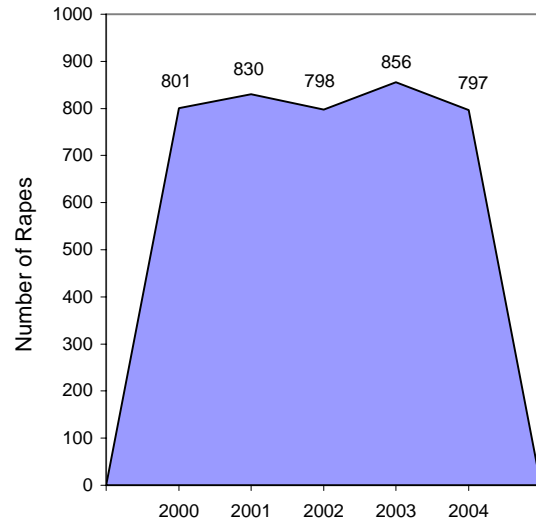
There were 128 homicides across the county in calendar year 2004, two less than in 2003 (Figure 2). This decrease of two percent was positive in that at mid-year 2004, there had been a 26 percent increase from the first half of 2003 (72 between January to June 2004, compared to 57 in 2003) – an upward trend that did not continue the second half of the year (not shown). However, as Figure 2 shows, the increase in the number of homicides since 2002 is still of concern. Information from the San Diego Police Department (on homicide cases in which motive could be determined) shows that a greater percentage of homicides in 2004 was gang-related (37%) than in prior years (e.g., 22% in 2000) (not shown).

**Figure 2
HOMICIDES HAVE INCREASED OVER THE
PAST TWO YEARS**



SOURCE: SANDAG

**Figure 3
RAPES DECREASED
FROM LAST YEAR**



SOURCE: SANDAG

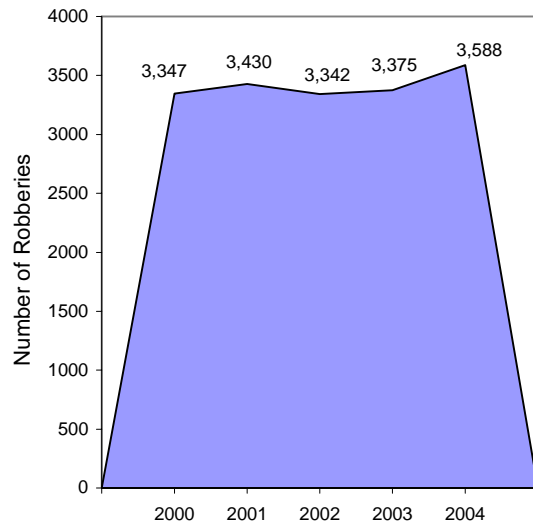
Rape

There were 797 rapes reported in San Diego County in 2004. As Figure 3 shows, the number of rapes reported to law enforcement has remained relatively stable over the past five years, with a one-year decrease of seven percent (from 856). In 2004, 80 percent of the rapes reported to law enforcement were completed and 20 percent were attempted (not shown). The percentage of rapes that were attempted was slightly higher in two previous years (e.g., 29% in 2001 and 28% in 2000) (not shown).

Robbery

Robbery, which increased by six percent, was the only one of the four violent crime types to rise in number from 2003 to 2004 (from 3,375 to 3,588) (Figure 4). Since 2000, the percent of robberies committed with a firearm has decreased slightly (from 25% to 20%) and the proportion of strong-arm robberies has increased (from 54% to 59%) (not shown).

**Figure 4
ROBBERY ONLY VIOLENT CRIME TO
INCREASE FROM 2003 TO 2004**

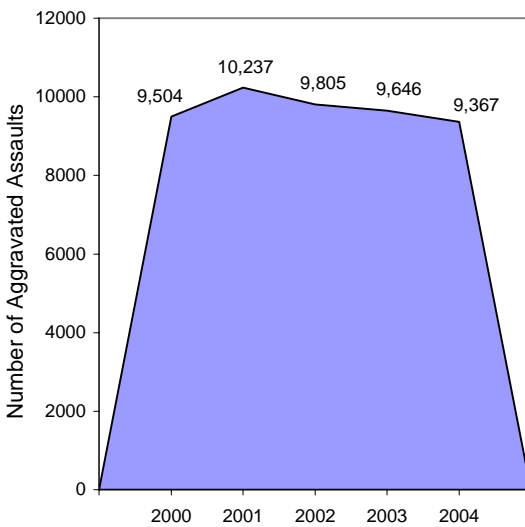


SOURCE: SANDAG

Aggravated Assault

One in 322 individuals in San Diego County was the victim of an aggravated assault in 2004. As Figure 5 shows, there were slightly fewer assaults reported in the region in 2004, compared to one (3% less) and five years (1% less) earlier. The percent of assaults (of those in which a weapon was used) that involved the use of a firearm increased from 16 percent in 2000 to 21 percent in 2004 – a relatively small percentage, but a change that equated to 407 more assaults with a firearm over time (not shown).

**Figure 5
FEWER AGGRAVATED ASSAULTS
WERE REPORTED IN 2004**



SOURCE: SANDAG

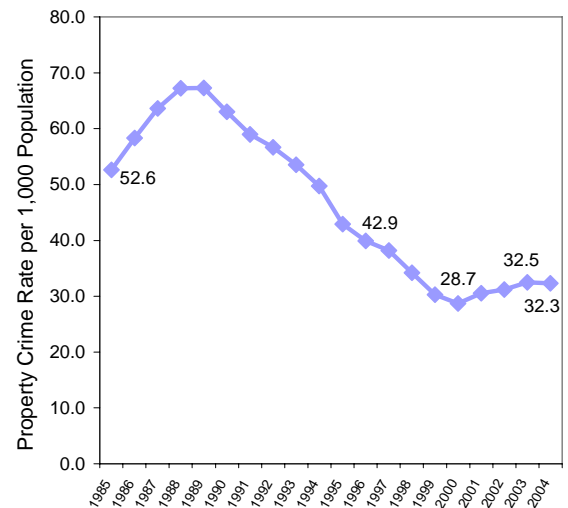
PROPERTY CRIME

With 97,386 property crimes reported (Appendix Tables 1 and 7), one in every 31 residents was the victim of a property crime in 2004. In contrast to the violent crime rate which was at its lowest point in 20 years, the property crime rate (32.3 per 1,000 population) was one percent lower than it was in 2003 (32.5), but 13 percent higher than

it was five years ago in 2000 (when it was 28.7 and at its lowest 20-year point) (Figure 6). Over half (57%) of all property crimes in 2004 were larcenies, 25 percent were motor vehicle thefts, and 18 percent were burglaries (not shown). Across the jurisdictions, 12 areas had a higher property crime rate in 2004 than 2003, and 13 had a lower rate. These rates ranged from 13.0 to 49.7 per 1,000 (Appendix Table 4). In the seven jurisdictions with increases of ten percent or more from the previous year, the greatest change was in the number of larcenies (four jurisdictions) and motor vehicle thefts (three jurisdictions).

In terms of dollar value, over \$250 million worth of property was stolen in the San Diego region in 2004, compared to \$236 million in 2003. Forty-four percent (44%) of this property was recovered in 2004 (which was down slightly from 46% in 2003 and 47% in 2000) (not shown).

**Figure 6
PROPERTY CRIME RATES DECREASE
SLIGHTLY AFTER RECENT INCREASES**

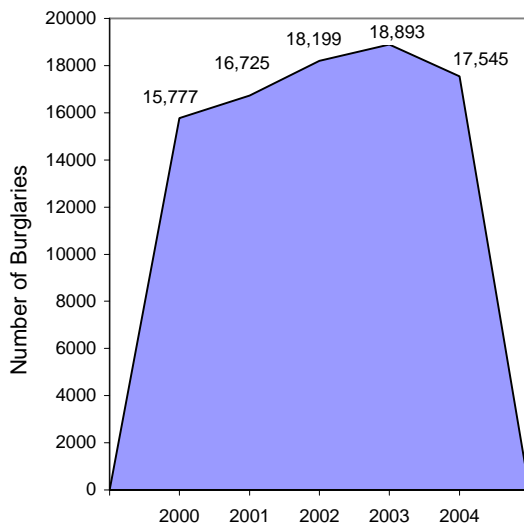


SOURCES: SANDAG; California Department of Finance; U.S. Census 1990; U.S. Census 2000

Burglary

Burglary, with 17,545 incidents reported to law enforcement in 2004, was the only property crime to decrease over the one-year period (by 7%) (Figure 7). In 2004, almost three in every five burglaries (58%) were residential and one in every 103 occupied homes was burglarized. In 2004, 32 percent of burglaries involved a forced entry, with the rest described as no forced entry (50%) or unsuccessful (18%). Compared to ten years earlier, fewer homes were entered through no force (56% in 1995) and a greater percentage was categorized as unsuccessful (9% in 1995) – statistics which support the positive effects of crime prevention techniques (not shown).

Figure 7
BURGLARY WAS THE ONLY PROPERTY CRIME TO DECREASE FROM 2003 TO 2004



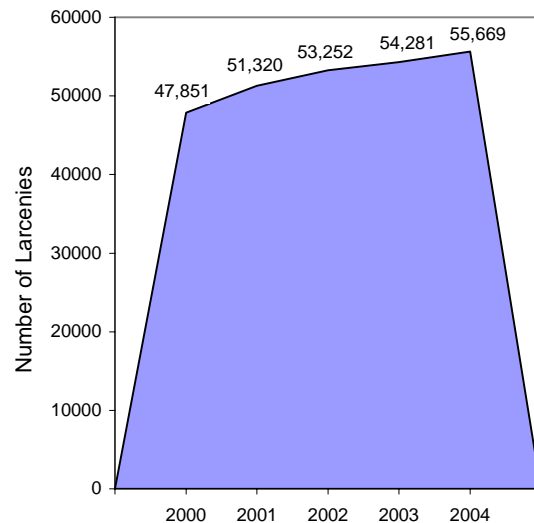
SOURCE: SANDAG

Larceny

The number of larcenies has increased steadily since 2000 (from 47,851 to 55,669 in 2004) (Figure 8). The most common larceny location in 2004 was from motor vehicles

(45%), with the second most common from buildings (18%)². Over the past year, larcenies categorized as shoplifting incidents increased the most (12%), compared to other larceny types (not shown).

Figure 8
LARCENIES INCREASED IN NUMBER EACH OF THE LAST FIVE YEARS



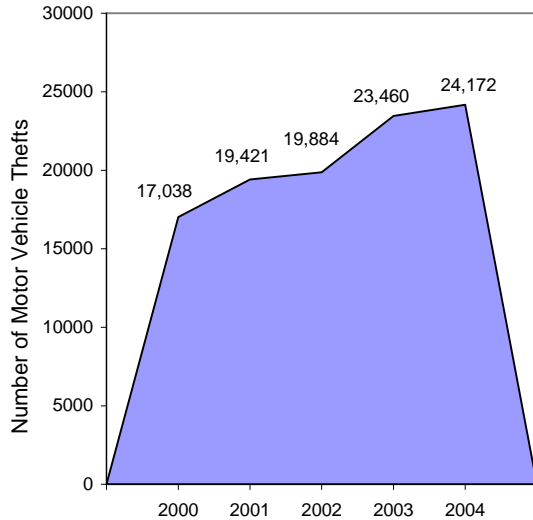
SOURCE: SANDAG

Motor Vehicle Theft

One in 91 registered motor vehicles was stolen in the San Diego region in 2004. This equated to a total of 24,172 stolen vehicles in 2004, a 3 percent increase from 2003, but a 42 percent increase from 2000 (Figure 9). In terms of dollar amount, the value of these stolen vehicles was estimated at over \$144 million and represented over half (58%) of the value of total property stolen (not shown).

² Over the past five years, the proportion of thefts from vehicles has increased (37% to 45%) and the proportion of thefts from buildings has decreased (from 22% to 18%).

Figure 9
VEHICLE THEFT HAS INCREASED
MORE THAN OTHER PROPERTY CRIME
SINCE 2000



SOURCE: SANDAG

Arson

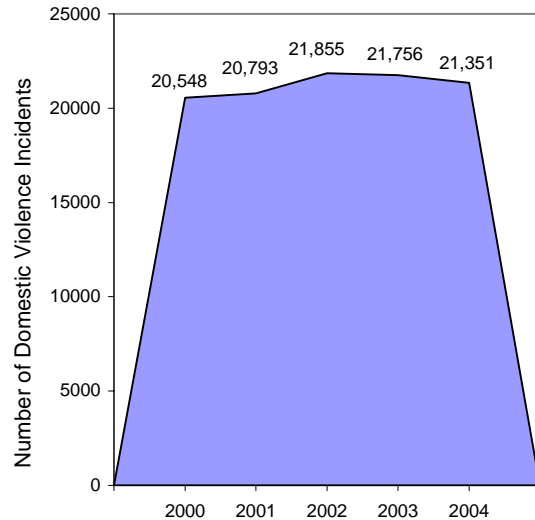
Unlike other FBI Index offenses, when arson is committed in concert with another FBI Index offense, both incidents must be reported, which is why arson is presented separately from other property crime statistics. There were 525 arsons reported in 2004, which was lower than in 2003 (when there were 581). Fifty percent (50%) of arsons in 2004 were of structures and the other half were categorized as mobile and other property types (not shown).

DOMESTIC VIOLENCE

Law enforcement agencies also track domestic violence incidents, some of which are included in the previously reported numbers. For example, a domestic violence incident could include a Part I violent crime (e.g., aggravated assault) or some type of property crime (e.g., burglary or destroying property). There were 21,351 domestic

violence incidents reported to law enforcement in 2004, which represented a decrease of two percent from the previous year. Across the 19 jurisdictions (statistics are not available for the unincorporated areas separately), seven agencies reported decreases (ranging from 3% to 9%), ten reported increases (ranging from 2% to 15%), and one each had no change or reported less than 30 incidents in at least one of the comparison years (not shown).

Figure 10
DOMESTIC VIOLENCE DOWN SLIGHTLY
OVER LAST YEAR

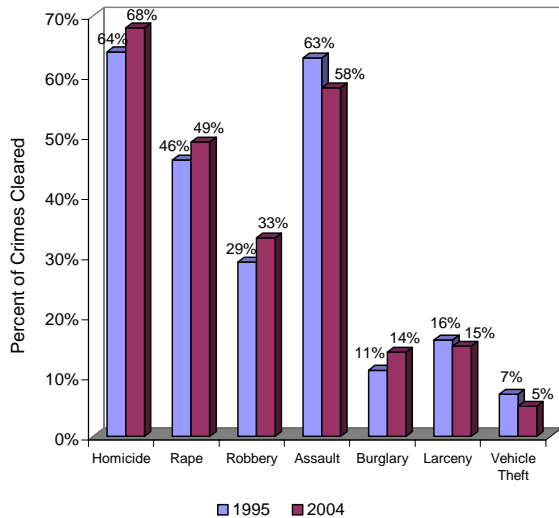


SOURCE: SANDAG

CLEARANCE RATES

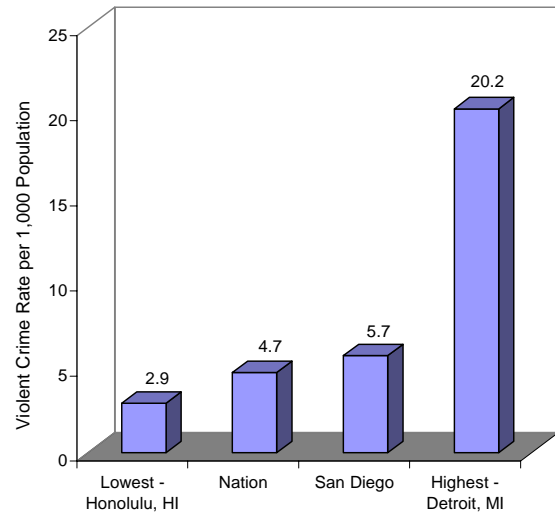
A crime is cleared or solved for crime-reporting purposes when at least one person is arrested and charged with the offense. Not surprisingly, the clearance rates in 2004 varied by crime type, with violent crimes cleared more frequently than property crimes. As Figure 11 shows, compared to ten years earlier, a slightly greater percentage of homicides, rapes, robberies, and burglaries has been cleared.

Figure 11
MORE THAN TWO-THIRDS OF HOMICIDES
WERE CLEARED IN 2004



SOURCE: SANDAG

Figure 12
CITY OF SAN DIEGO HAD FOURTH LOWEST
VIOLENT CRIME RATE IN 2003

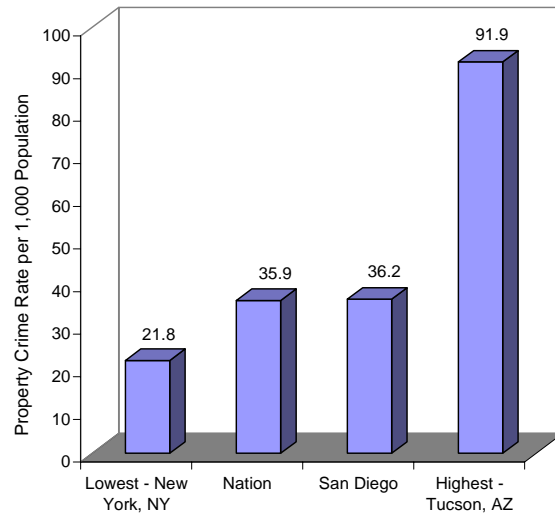


SOURCES: SANDAG; U.S. Department of Justice

HOW DOES SAN DIEGO COMPARE TO OTHER U.S. CITIES?

National information for crime rates for the 31 U.S. cities (rather than counties or regions) with populations of 500,000 or more was recently released for calendar year 2003 (one year earlier than the other statistics presented in this report). In 2003, the City of San Diego was the seventh largest city in the U.S., with a population of almost 1.3 million. As Figures 12 and 13 show, the City of San Diego was one of the safest places to live, compared to other large metropolitan areas in terms of both violent (fourth lowest, following Honolulu, HI; San Jose, CA; and Austin, TX) and property crime (fourth lowest, following New York, NY; San Jose, CA; and Los Angeles, CA).

Figure 13
CITY OF SAN DIEGO HAD FOURTH LOWEST
PROPERTY CRIME RATE IN 2003



SOURCES: SANDAG; U.S. Department of Justice

UPCOMING BULLETINS

Upcoming bulletins included in the 2004 Crime Series will be released by May 2005 and will include information on criminal justice budget expenditures in FY 2005 and victimization statistics for the region.

Appendix Table 1
NUMBER OF CRIMES BY OFFENSE
San Diego Region, 2000, 2003, and 2004

	2000	2003	2004	Change	
				2000-2004	2003-2004
Homicide	97	130	128	32%	-2%
Rape	801	856	797	0%	-7%
Robbery	3,347	3,375	3,588	7%	6%
Aggravated Assault	9,504	9,646	9,367	-1%	-3%
Violent Crime Total	13,749	14,007	13,880	1%	-1%
Burglary	15,777	18,893	17,545	11%	-7%
Larceny Theft	47,851	54,281	55,669	16%	3%
Motor Vehicle Theft	17,038	23,460	24,172	42%	3%
Property Crime Total	80,666	96,634	97,386	21%	1%
FBI INDEX	94,415	110,641	111,266	18%	1%

SOURCE: SANDAG

Appendix Table 2
FBI INDEX CRIME RATE PER 1,000 POPULATION BY JURISDICTION
San Diego Region, 2000, 2003, and 2004

	2000	2003	2004	Change	
				2000-2004	2003-2004
Carlsbad	26.3	27.2	26.2	<-1%	-4%
Chula Vista	40.6	39.3	38.4	-5%	-2%
Coronado	17.9	24.0	26.4	47%	10%
El Cajon	40.2	50.4	49.2	22%	-2%
Escondido	38.2	40.7	45.0	18%	11%
La Mesa	38.1	41.1	43.0	13%	5%
National City	49.2	54.7	57.1	16%	4%
Oceanside	36.3	38.6	41.2	13%	7%
San Diego	37.9	41.9	40.4	7%	-4%
Sheriff - Total	22.3	26.1	26.6	19%	2%
Del Mar	51.3	58.1	46.1	-10%	-21%
Encinitas	23.5	24.9	22.4	-5%	-10%
Imperial Beach	32.5	36.0	39.1	20%	9%
Lemon Grove	33.3	38.2	42.4	27%	11%
Poway	17.6	18.7	18.2	3%	-3%
San Marcos	26.3	26.3	25.9	-2%	-2%
Santee	24.8	27.0	25.9	4%	-4%
Solana Beach	19.6	23.7	27.5	40%	16%
Vista	29.6	32.0	35.7	21%	12%
Unincorporated	18.6	24.0	24.3	31%	1%
Alpine	20.8	25.2	24.8	19%	-2%
Fallbrook	16.9	24.1	25.9	53%	7%
Lakeside	17.2	25.5	26.2	52%	3%
Ramona	12.6	21.1	15.1	20%	-28%
Spring Valley	21.8	24.9	28.8	32%	16%
Valley Center	13.0	28.3	24.1	85%	-15%
Other Unincorporated	19.8	23.0	23.3	18%	1%
TOTAL	33.6	37.2	36.9	10%	-1%

NOTE: The California Crime Index includes homicide, rape, robbery, aggravated assault, burglary, and motor vehicle theft, and excludes larceny theft. Populations used to compute crime rates reflect the most current Department of Finance estimates.

SOURCES: California Department of Finance; SANDAG

Appendix Table 3
VIOLENT CRIME RATE PER 1,000 POPULATION BY JURISDICTION
San Diego Region, 2000, 2003, and 2004

	2000	2003	2004	Change	
				2000-2004	2003-2004
Carlsbad	2.3	2.9	2.9	26%	0%
Chula Vista	4.9	3.9	4.0	-18%	3%
Coronado	1.0	1.3	1.5	50%	15%
El Cajon	6.6	5.7	5.6	-15%	-2%
Escondido	5.0	4.3	4.8	-4%	12%
La Mesa	4.0	3.1	3.6	-10%	16%
National City	8.0	9.1	7.4	-8%	-19%
Oceanside	5.3	6.4	5.9	11%	-8%
San Diego	5.9	5.7	5.2	-12%	-9%
Sheriff - Total	3.4	3.1	3.6	6%	16%
Del Mar	4.3	2.2	2.9	-33%	32%
Encinitas	3.0	2.4	2.4	-20%	0%
Imperial Beach	5.8	5.2	6.8	17%	31%
Lemon Grove	6.5	5.7	6.6	2%	16%
Poway	2.1	1.6	1.5	-29%	-6%
San Marcos	3.7	3.2	3.7	0%	16%
Santee	3.2	2.4	3.1	-3%	29%
Solana Beach	1.8	1.5	2.7	50%	80%
Vista	3.9	4.1	4.9	26%	20%
Unincorporated	3.2	3.0	3.5	9%	17%
Alpine	3.4	2.4	3.4	0%	42%
Fallbrook	2.7	2.2	2.3	-15%	5%
Lakeside	3.7	3.1	2.8	-24%	-10%
Ramona	1.7	2.7	2.1	24%	-22%
Spring Valley	3.4	3.9	5.4	59%	38%
Valley Center	3.6	3.6	3.9	8%	8%
Other Unincorporated	3.4	3.0	3.5	3%	17%
TOTAL	4.9	4.7	4.6	-6%	-2%

NOTE: The FBI Index of violent crimes includes homicide, rape, robbery, and aggravated assault. Populations used to compute crime rates reflect the most current Department of Finance estimates.

SOURCES: California Department of Finance; SANDAG

Appendix Table 4
PROPERTY CRIME RATE PER 1,000 POPULATION BY JURISDICTION
San Diego Region, 2000, 2003, and 2004

	2000	2003	2004	Change	
				2000-2004	2003-2004
Carlsbad	24.0	24.2	23.3	-3%	-4%
Chula Vista	35.7	35.4	34.4	-4%	-3%
Coronado	16.9	22.7	24.9	47%	10%
El Cajon	33.6	44.7	43.6	30%	-2%
Escondido	33.2	36.4	40.2	21%	10%
La Mesa	34.1	38.0	39.5	16%	4%
National City	41.2	45.6	49.7	21%	9%
Oceanside	31.1	32.2	35.3	14%	10%
San Diego	32.0	36.2	35.1	10%	-3%
Sheriff - Total	18.8	23.0	22.9	22%	<-1%
Del Mar	46.9	55.9	43.2	-8%	-23%
Encinitas	20.5	22.4	20.0	-2%	-11%
Imperial Beach	26.7	30.8	32.2	21%	5%
Lemon Grove	26.8	32.5	35.7	33%	10%
Poway	15.5	17.1	16.8	8%	-2%
San Marcos	22.6	23.1	22.2	-2%	-4%
Santee	21.6	24.6	22.8	6%	-7%
Solana Beach	17.7	22.2	24.9	41%	12%
Vista	25.7	27.9	30.8	20%	10%
Unincorporated	15.3	21.0	20.8	36%	-1%
Alpine	17.4	22.8	21.5	24%	-6%
Fallbrook	14.3	21.9	23.7	66%	8%
Lakeside	13.5	22.4	23.5	74%	5%
Ramona	10.9	18.4	13.0	19%	-29%
Spring Valley	18.4	21.0	23.4	27%	11%
Valley Center	9.4	24.7	20.2	115%	-18%
Other Unincorporated	16.4	20.0	19.8	21%	-1%
TOTAL	28.7	32.5	32.3	13%	-1%

NOTE: The FBI Index of property crimes includes burglary, larceny, and motor vehicle theft. Populations used to compute crime rates reflect the most current Department of Finance estimates.

SOURCES: California Department of Finance; SANDAG

Appendix Table 5
NUMBER OF FBI INDEX CRIMES BY JURISDICTION
San Diego Region, 2000, 2003, and 2004

	2000	2003	2004	Change	
				2000-2004	2003-2004
Carlsbad	2,055	2,465	2,433	18%	-1%
Chula Vista	7,048	7,882	8,052	14%	2%
Coronado	432	635	699	62%	10%
El Cajon	3,817	4,894	4,804	26%	-2%
Escondido	5,099	5,645	6,331	24%	12%
La Mesa	2,085	2,299	2,412	16%	5%
National City	2,668	3,286	3,255	22%	-1%
Oceanside	5,853	6,580	7,138	22%	8%
San Diego	46,361	53,748	52,217	13%	-3%
Sheriff - Total	17,363	21,284	22,076	27%	4%
Del Mar	225	263	210	-7%	-20%
Encinitas	1,366	1,527	1,401	3%	-8%
Imperial Beach	876	999	1,085	24%	9%
Lemon Grove	830	975	1,084	31%	11%
Poway	844	936	924	9%	-1%
San Marcos	1,446	1,680	1,745	21%	4%
Santee	1,314	1,454	1,397	6%	-4%
Solana Beach	254	318	370	46%	16%
Vista	2,661	2,983	3,361	26%	13%
Unincorporated	7,547	10,149	10,499	39%	3%
Alpine	580	700	704	21%	1%
Fallbrook	799	1,175	1,294	62%	10%
Lakeside	925	1,353	1,417	53%	5%
Ramona	437	729	536	23%	-26%
Spring Valley	1,605	1,747	2,046	27%	17%
Valley Center	283	624	548	94%	-12%
Other Unincorporated	2,918	3,821	3,954	36%	3%
California Highway Patrol	135	144	127	-6%	-12%
California State University San Marcos	62	33	52	-16%	58%
San Diego State University	531	695	589	11%	-15%
University of California San Diego	533	574	648	22%	13%
San Diego Harbor Police	310	352	347	12%	-1%
State Parks and Recreation	63	125	86	37%	-31%
TOTAL	94,415	110,641	111,266	18%	1%

NOTES: If comparison numbers equal 30 or less, percent changes are omitted. The FBI Index includes homicide, rape, robbery, aggravated assault, burglary, larceny, and motor vehicle theft.

SOURCE: SANDAG

Appendix Table 6
NUMBER OF VIOLENT CRIMES BY JURISDICTION
San Diego Region, 2000, 2003, and 2004

	2000	2003	2004	Change	
				2000-2004	2003-2004
Carlsbad	179	266	270	51%	2%
Chula Vista	846	776	838	-1%	8%
Coronado	25	35	41	--	17%
El Cajon	626	555	545	-13%	-2%
Escondido	669	591	676	1%	14%
La Mesa	218	173	200	-8%	16%
National City	432	546	421	-3%	-23%
Oceanside	851	1,090	1,023	20%	-6%
San Diego	7,160	7,366	6,774	-5%	-8%
Sheriff - Total	2,671	2,535	3,022	13%	19%
Del Mar	19	10	13	--	--
Encinitas	174	150	150	-14%	0%
Imperial Beach	156	144	190	22%	32%
Lemon Grove	161	145	170	6%	17%
Poway	101	78	75	-26%	-4%
San Marcos	206	205	250	21%	22%
Santee	168	129	165	-2%	28%
Solana Beach	24	20	36	--	--
Vista	352	381	465	32%	22%
Unincorporated	1,310	1,273	1,508	15%	18%
Alpine	94	66	95	1%	44%
Fallbrook	127	107	113	-11%	6%
Lakeside	200	162	150	-25%	-7%
Ramona	60	93	76	27%	-18%
Spring Valley	252	274	386	53%	41%
Valley Center	79	80	88	11%	10%
Other Unincorporated	498	491	600	20%	22%
California Highway Patrol	24	11	15	--	--
California State University San Marcos	0	1	3	--	--
San Diego State University	20	32	24	--	--
University of California San Diego	6	7	6	--	--
San Diego Harbor Police	19	13	17	--	--
State Parks and Recreation	3	10	5	--	--
TOTAL	13,749	14,007	13,880	1%	-1%

NOTES: If comparison numbers equal 30 or less, percent changes are omitted. Violent crime includes homicide, rape, robbery, and aggravated assault.

SOURCE: SANDAG

Appendix Table 7
NUMBER OF PROPERTY CRIMES BY JURISDICTION
San Diego Region, 2000, 2003, and 2004

	2000	2003	2004	Change	
				2000-2004	2003-2004
Carlsbad	1,876	2,199	2,163	15%	-2%
Chula Vista	6,202	7,106	7,214	16%	2%
Coronado	407	600	658	62%	10%
El Cajon	3,191	4,339	4,259	33%	-2%
Escondido	4,430	5,054	5,655	28%	12%
La Mesa	1,867	2,126	2,212	18%	4%
National City	2,236	2,740	2,834	27%	3%
Oceanside	5,002	5,490	6,115	22%	11%
San Diego	39,201	46,382	45,443	16%	-2%
Sheriff - Total	14,692	18,749	19,054	30%	2%
Del Mar	206	253	197	-4%	-22%
Encinitas	1,192	1,377	1,251	5%	-9%
Imperial Beach	720	855	895	24%	5%
Lemon Grove	669	830	914	37%	10%
Poway	743	858	849	14%	-1%
San Marcos	1,240	1,475	1,495	21%	1%
Santee	1,146	1,325	1,232	8%	-7%
Solana Beach	230	298	334	45%	12%
Vista	2,309	2,602	2,896	25%	11%
Unincorporated	6,237	8,876	8,991	44%	1%
Alpine	486	634	609	25%	-4%
Fallbrook	672	1,068	1,181	76%	11%
Lakeside	725	1,191	1,267	75%	6%
Ramona	377	636	460	22%	-28%
Spring Valley	1,353	1,473	1,660	23%	13%
Valley Center	204	544	460	125%	-15%
Other Unincorporated	2,420	3,330	3,354	39%	1%
California Highway Patrol	111	133	112	1%	-16%
California State University San Marcos	62	32	49	-21%	53%
San Diego State University	511	663	565	11%	-15%
University of California San Diego	527	567	642	22%	13%
San Diego Harbor Police	291	339	330	13%	-3%
State Parks and Recreation	60	115	81	35%	-30%
TOTAL	80,666	96,634	97,386	21%	1%

NOTES: If comparison numbers equal 30 or less, the percent change is omitted. Property crime includes burglary, larceny, and motor vehicle theft.

SOURCE: SANDAG

Appendix Table 8
Population, by Jurisdiction
San Diego Region, 2000, 2003, and 2004

	2000	2003	2004	Change	
				2000-2004	2003-2004
Carlsbad	78,247	90,778	92,995	19%	2%
Chula Vista	173,556	200,677	209,436	21%	4%
Coronado	24,100	26,444	26,459	10%	<1%
El Cajon	94,869	97,142	97,643	3%	1%
Escondido	133,559	138,814	140,671	5%	1%
La Mesa	54,749	55,966	56,050	2%	<1%
National City	54,260	60,039	57,047	5%	-5%
Oceanside	161,029	170,663	173,307	8%	2%
San Diego	1,223,400	1,281,382	1,294,032	6%	1%
Sheriff - Total	779,918	816,335	831,305	7%	2%
Del Mar	4,389	4,526	4,555	4%	1%
Encinitas	58,014	61,399	62,586	8%	2%
Imperial Beach	26,992	27,752	27,779	3%	<1%
Lemon Grove	24,918	25,500	25,592	3%	<1%
Poway	48,044	50,084	50,632	5%	1%
San Marcos	54,977	63,851	67,426	23%	6%
Santee	52,975	53,847	54,022	2%	<1%
Solana Beach	12,979	13,396	13,431	3%	<1%
Vista	89,857	93,229	94,048	5%	1%
Unincorporated	406,773	422,751	431,234	6%	2%
Alpine	27,928	27,767	28,347	2%	2%
Fallbrook	47,154	48,706	49,918	6%	2%
Lakeside	53,886	53,093	54,013	<1%	2%
Ramona	34,595	34,631	35,515	3%	3%
Spring Valley	73,728	70,082	70,957	-4%	1%
Valley Center	21,751	22,060	22,761	5%	3%
Other Unincorporated	147,731	166,412	169,723	15%	2%
Camp Pendleton	36,146	37,864	38,259	6%	1%
TOTAL	2,813,833	2,976,104	3,017,204	7%	1%
Occupied Households	994,677	1,029,234	1,043,221	5%	1%
Female Population	1,406,917	1,488,052	1,508,602	7%	1%

NOTES: Population figures are based upon U.S. Census 2000 and current California Department of Finance estimates; revisions reflecting annexations of small land parcels (470 residents) out of the unincorporated area in 2003 are also included. "Sheriff-Total" includes contract cities and the unincorporated area served by the San Diego County Sheriff's Department. Camp Pendleton is not included. "Unincorporated" includes Alpine, Campo, Fallbrook, Julian, Lakeside, Pine Valley, Ramona, Ranchita, Spring Valley, and Valley Center, as well as the unincorporated areas of Encinitas, Imperial Beach, Lemon Grove, San Marcos, Poway, Santee, and Vista. "Other Unincorporated" is equal to the unincorporated area of the Sheriff's jurisdiction minus Alpine, Fallbrook, Lakeside, Ramona, Spring Valley, and Valley Center.

SOURCES: California Department of Finance; U.S. Census 2000; SANDAG