



Twenty-Five Years of Crime in the San Diego Region: 1982 through 2006

April 2007

Cynthia Burke, Ph.D., Division Director



401 B Street
Suite 800
San Diego, CA 92101
(619) 699-1900

BOARD OF DIRECTORS



The 18 cities and county government are SANDAG serving as the forum for regional decision-making. SANDAG builds consensus; plans, engineers, and builds public transit; makes strategic plans; obtains and allocates resources; and provides information on a broad range of topics pertinent to the region's quality of life.

CHAIR

Hon. Mary Teresa Sessom

FIRST VICE CHAIR

Hon. Lori Holt Pfeiler

SECOND VICE CHAIR

Hon. Jerome Stocks

EXECUTIVE DIRECTOR

Gary L. Gallegos

CITY OF CARLSBAD

Hon. Matt Hall, Councilmember
(A) Hon. Bud Lewis, Mayor
(A) Hon. Ann Kulchin, Mayor Pro Tem

CITY OF CHULA VISTA

Hon. Cheryl Cox, Mayor
(A) Hon. Jerry Rindone, Deputy Mayor
(A) Hon. John McCann, Councilmember

CITY OF CORONADO

Hon. Phil Monroe, Councilmember
(A) Hon. Carrie Downey, Mayor Pro Tem
(A) Hon. Al Ovrom, Councilmember

CITY OF DEL MAR

Hon. Crystal Crawford, Councilmember
(A) Hon. David Druker, Deputy Mayor
(A) Hon. Henry Abarbanel, Councilmember

CITY OF EL CAJON

Hon. Mark Lewis, Mayor
(A) Hon. Jillian Hanson-Cox, Councilmember

CITY OF ENCINITAS

Hon. Jerome Stocks, Deputy Mayor
(A) Hon. Teresa Barth, Councilmember

CITY OF ESCONDIDO

Hon. Lori Holt Pfeiler, Mayor
(A) Hon. Ed Gallo, Councilmember
(A) Hon. Sam Abed, Mayor Pro Tem

CITY OF IMPERIAL BEACH

Hon. Jim Janney, Mayor
(A) Hon. Patricia McCoy, Councilmember
(A) Hon. Mayda Winter, Mayor Pro Tem

CITY OF LA MESA

Hon. Art Madrid, Mayor
(A) Hon. David Allan, Councilmember
(A) Hon. Mark Arapostathis, Councilmember

CITY OF LEMON GROVE

Hon. Mary Teresa Sessom, Mayor
(A) Hon. Jerry Jones, Councilmember
(A) Hon. Jerry Selby, Councilmember

CITY OF NATIONAL CITY

Hon. Ron Morrison, Mayor
(A) Hon. Frank Parra, Councilmember
(A) Hon. Louie Natividad, Councilmember

CITY OF OCEANSIDE

Hon. Jim Wood, Mayor
(A) Hon. Jerry Kern, Councilmember
(A) Hon. Jack Feller, Councilmember

CITY OF POWAY

Hon. Mickey Cafagna, Mayor
(A) Hon. Robert Emery, Councilmember
(A) Hon. Don Higginson, Councilmember

CITY OF SAN DIEGO

Hon. Jerry Sanders, Mayor
(A) Hon. Toni Atkins, Councilmember
(A) Hon. Jim Madaffer, Councilmember
(A) Hon. Scott Peters, Council President

CITY OF SAN MARCOS

Hon. Jim Desmond, Mayor
(A) Hon. Hal Martin, Vice Mayor

CITY OF SANTEE

Hon. Jack Dale, Councilmember
(A) Hon. Hal Ryan, Councilmember
(A) Hon. John Minto, Councilmember

CITY OF SOLANA BEACH

Hon. Lesa Heebner, Mayor
(A) Hon. Dave Roberts, Councilmember
(A) Hon. Mike Nichols, Councilmember

CITY OF VISTA

Hon. Judy Ritter, Mayor Pro Tem
(A) Hon. Bob Campbell, Councilmember
(A) Hon. Steve Gronke, Councilmember

COUNTY OF SAN DIEGO

Hon. Ron Roberts, Chairman
(A) Hon. Bill Horn, Supervisor
(A) Hon. Greg Cox, Vice Chairman
(A) Hon. Dianne Jacob, Chair Pro Tem

IMPERIAL COUNTY

(Advisory Member)
Hon. Victor Carrillo, Chairman
(A) Hon. David Ouzan, Councilmember

CALIFORNIA DEPARTMENT OF TRANSPORTATION

(Advisory Member)
Will Kempton, Director
(A) Pedro Orso-Delgado, District 11 Director

METROPOLITAN TRANSIT SYSTEM

(Advisory Member)
Harry Mathis, Chairman
(A) Hon. Jerry Rindone, Vice Chairman
(A) Hon. Bob Emery, Board Member

NORTH COUNTY TRANSIT DISTRICT

(Advisory Member)
Hon. Ed Gallo, Chairman
(A) Hon. Jerome Stocks, Planning Committee Chair
(A) Hon. David Druker, Monitoring Committee Chair

U.S. DEPARTMENT OF DEFENSE

(Advisory Member)
CAPT Michael Giorgione, USN, CEC
Commanding Officer, Southwest Division
Naval Facilities Engineering Command
(A) CAPT Steve Wirsching, USN, CEC
Executive Officer, Southwest Division
Naval Facilities Engineering Command

SAN DIEGO UNIFIED PORT DISTRICT

(Advisory Member)
Sylvia Rios, Chair
(A) Michael Bixler, Commissioner

SAN DIEGO COUNTY WATER AUTHORITY

(Advisory Member)
Marilyn Dailey, Commissioner
(A) Mark Muir, Commissioner
(A) Gary Croucher, Commissioner

SOUTHERN CALIFORNIA TRIBAL CHAIRMEN'S ASSOCIATION

(Advisory Member)
Chairman Robert Smith (Pala), SCTCA Chair
(A) Chairman Allen Lawson (San Pasqual)

MEXICO

(Advisory Member)
Hon. Luis Cabrera C.
Consulate General of Mexico

As of March 1, 2007

TWENTY-FIVE YEARS OF CRIME IN THE SAN DIEGO REGION: 1982 THROUGH 2006

INTRODUCTION

Since 1980, SANDAG has been reporting regional crime statistics for the San Diego region through a cooperative agreement with local law enforcement agencies. This report presents and discusses crime trend data for the past 25 years. Crime rates per 1,000 resident population¹, as well as the actual number of crimes reported are presented. SANDAG is the only local entity to compile these statistics across the 18 incorporated cities, as well as the unincorporated areas of the county, making this information some of the most frequently requested from SANDAG's Criminal Justice Clearinghouse. These data are useful to local law enforcement agencies as they track the effectiveness of their prevention and response efforts on regional crime rates.

OVERALL CRIME

There was a total of 106,931 Part I (or FBI Index) crimes in the San Diego region in 2006 (Appendix Tables 1 and 5), which equated to 34.87 crimes per 1,000 population (Appendix Table 2). Part I crimes include four violent offenses (homicide, rape, robbery, and aggravated assault) and three property offenses (burglary, larceny, and motor vehicle theft) that are tracked nationwide in a standardized manner by the FBI, with agencies submitting crime data through the Uniform Crime Reporting (UCR) system.

¹ The populations used to calculate rates are provided in Appendix Table 20.

FAST FACTS

- The chance of being a crime victim in the San Diego region was less in 2006 than in 2005. One in 226 San Diego County residents was the victim of a violent crime in 2006, and one in 33 was the victim of a property crime.
- Thirteen of the 25 jurisdictions had a lower violent crime rate in 2006 compared to 2005. Twenty had a lower property crime rate compared to the previous year.
- The 2006 violent crime rate of 4.43 was the lowest in the past 25 years, despite recent increases in the number of homicides (1 year increase of 29%) and robberies (1 year increase of 9%).
- In 2006, 19,886 domestic violence incidents were reported to law enforcement, the lowest number since 1997.
- Larceny was down five percent from 2005, but was still the most common crime reported to police (about one every ten minutes).
- The number of vehicles stolen in the region decreased for the first time in five years. This decline also was the largest one-year change in the property crime category.
- Compared to other large U.S. cities, the City of San Diego had the fifth lowest FBI Index crime rate in 2005, the most recent comparison year possible.

VIOLENT CRIME

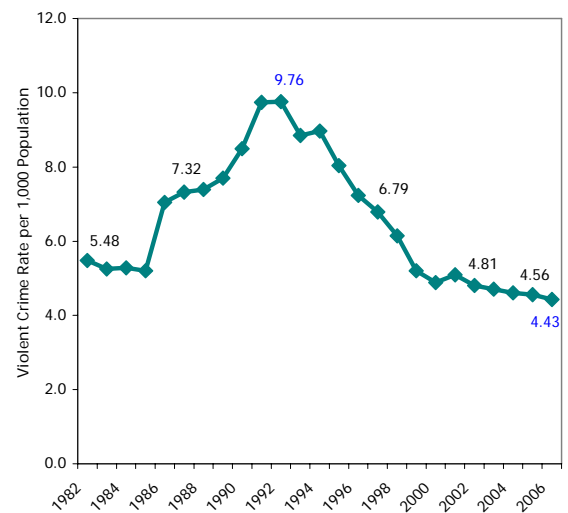
Over the past 25 years, the violent crime rate in the San Diego region declined during the first half of the 1980s and began to increase in 1986 (from 5.20 in 1985), reaching a peak of 9.76 in 1992 (Figure 1)². In 2006, there were 13,576 Part I violent crimes reported to law enforcement in the region (Appendix Tables 1 and 6)³. This equated to 4.43 violent crimes per 1,000 residents and represented a three percent decrease from 2005 (when the rate was 4.56) (Appendix Table 3). In fact, the 2006 violent crime rate was the lowest in the last 25 years, despite recent increases in some violent crime categories. A number of theories have been provided regarding possible factors related to this overall drop in crime since the 1990s, including declining numbers of young males in high crime-associated age groups, legislation which increased jail and prison time for violent offenses, economic factors, and the implementation of effective crime prevention programs. The most common type of reported violent crime was aggravated assault, which represented almost two-thirds (62%) of all violent crime in 2006 (robbery represented 32%, rape 6%, and homicide 1%) (not shown).

Each jurisdiction also documents violent crimes committed against senior citizens. In 2006, there were 448 violent crimes against senior citizens, a decrease of 8 percent from the previous year. These crimes included 5 homicides, 7 rapes, 205 robberies, and 231 aggravated assaults (not shown).

² The crime rates/numbers of crimes in the current year, and 1, 5, 10, 20, and 25 years ago, are presented, as well as the highest and lowest rates/numbers over the past 25 years.

³ The numbers of violent crimes reported in each jurisdiction for 2002 through 2006 also are presented in Appendix Tables 10 through 14.

Figure 1
VIOLENT CRIME RATE LOWEST
IN 25 YEARS



SOURCES: SANDAG; California Department of Finance; U.S. Census 1990; U.S. Census 2000

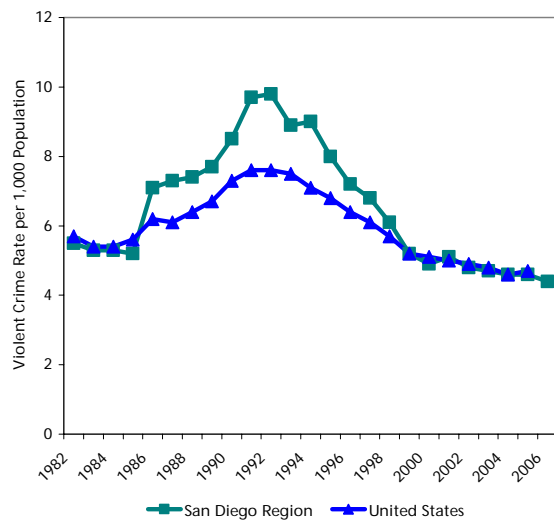
Across jurisdictions, the 2006 violent crime rate per 1,000 population ranged from 0.88 in Coronado to 8.25 in National City (Appendix Table 3 and Appendix Map 1). Over the past year, 13 jurisdictions had lower and 9 had higher violent crime rates, compared to 2005 (3 had numbers too small for valid comparisons). Recent efforts by individual departments to address violent crime in their communities have included strategies targeting gangs and other specific offender groups, as well as prevention efforts for youth. The jurisdictions with the largest one-year decreases included Fallbrook, Ramona, other unincorporated, Vista, Spring Valley, and El Cajon.

Statistics from the FBI were used to compare changes over time in the violent crime rate reported in the San Diego region to those reported across the United States⁴. As Figure 2 shows, the San Diego region experienced a greater rise in violent crime in the late 1980s

⁴ National statistics currently are available through 2005 only.

and early 1990s, compared to the nation, returning to a similar violent crime rate after 1998. This increase possibly was related to the prevalence of methamphetamine distribution and use in the region during this time period. In 2005, the violent crime rate in the San Diego region was 4.56, versus 4.69 for the nation as a whole.

Figure 2
SAN DIEGO REGION HAD A GREATER INCREASE IN VIOLENT CRIME THAN THE NATION IN LATE 1980s



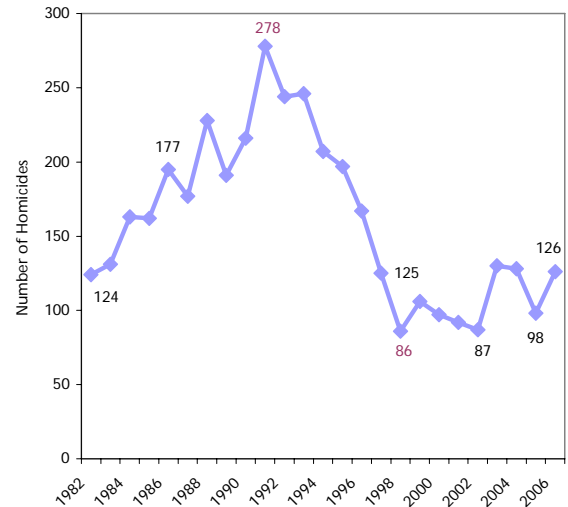
SOURCES: SANDAG; U.S. Department of Justice

Homicide

Over the past 25 years, the number of homicides peaked at 278 in 1991 and decreased fairly steadily to a low of 86 in 1998 (Figure 3 and Appendix Table 8). Between 1998 and 2002, the number of homicides ranged between 86 and 106, but jumped to 130 and 128 in 2003 and 2004, respectively. There was a one-year drop to 98 in 2005, but another increase to 126 in 2006. (Appendix Table 1). This possible trend of increased violence also has been reported in a number of other large U.S. cities, including Boston, Cincinnati, Detroit, and Miami. According to the Police Executive Research

Forum (PERF)⁵, this recent change in the extent and nature of violent crime may be more than just a “blip” and deserves attention and resources before a true tipping point occurs.

Figure 3
NUMBER OF HOMICIDES INCREASED AGAIN IN PAST YEAR



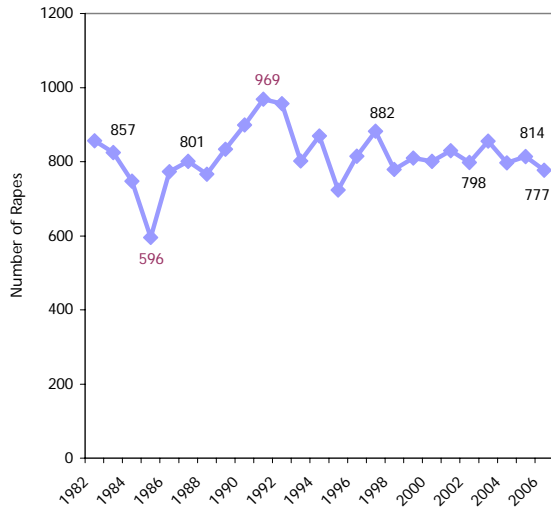
SOURCE: SANDAG

Rape

There were 777 rapes reported in the San Diego region in 2006, which was a five percent decrease from 2005 (when there were 814) (Appendix Table 1). As Figure 4 and Appendix Table 8 show, the number of rapes reported to law enforcement has remained relatively stable over the past 25 years, compared to the number of homicides during the same period of time. The greatest number of rapes reported to law enforcement was 969 in 1991, and the lowest was 596 in 1985. In 2006, 79 percent of the rapes reported to law enforcement were completed and 21 percent were attempted (not shown).

⁵ Police Executive Research Forum (2006). Chief Concerns – A Gathering Storm – Violent Crime in America 2006. Available on-line at www.policeforum.org.

Figure 4
LESS VARIABILITY IN NUMBER OF RAPES
COMPARED TO OTHER VIOLENT CRIMES

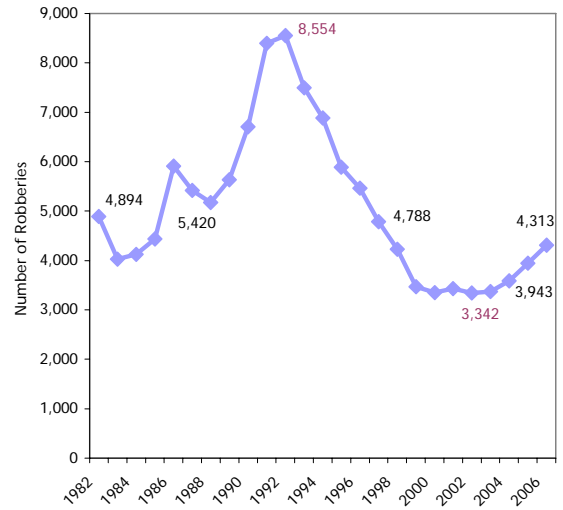


SOURCE: SANDAG

Robbery

There were 4,313 robberies in the region in 2006, compared to 3,943 in 2005 (Appendix Table 1). This represented the fourth consecutive year of increases, including a 9 percent increase from 2005 and a 29 percent increase from 2002. Over the past 25 years, the number of robberies has shown three declining trends, with the most recent beginning in 1993 (after the greatest number, 8,554, was reported in 1992) and continuing through 2000 (to 3,347) (Figure 5 and Appendix Table 8). In 2006, 25 percent of robberies involved a firearm, 11 percent a knife or other cutting instrument, 10 percent another weapon, and 55 percent were considered strong-arm. Just under half (49%) occurred out in the open, on streets or in other public places (not shown).

Figure 5
NUMBER OF ROBBERIES INCREASED
FOR FOURTH YEAR IN A ROW



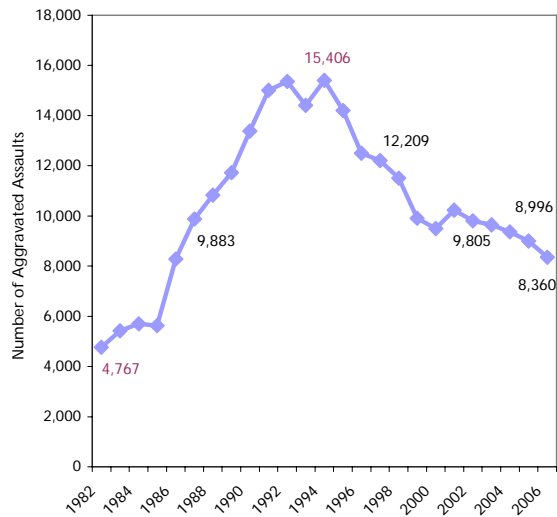
SOURCE: SANDAG

Aggravated Assault

One in 367 individuals in the San Diego region was the victim of an aggravated assault in 2006 (not shown). As Figure 6 and Appendix Table 1 show, there were fewer assaults reported in the region in 2006, compared to one (7% less) and five (15% less) years earlier. Over the past 25 years, the number of aggravated assaults followed an upward trend from 1982 (4,767) that peaked in 1994 (15,406) (Appendix Table 8). Since then, there has been an overall decline to 8,360 in 2006, but it should be noted that this figure is 75 percent higher than it was in 1982. This increase is due, at least in part, to 1986 legislation requiring agencies to report all domestic violence incidents. Fifteen percent (15%) of aggravated assaults in 2006 involved the use of a firearm (not shown).

In 2006, there were almost three simple assaults for every aggravated assault that was reported (for a total of 22,220 simple assaults), which are not included in these Part I statistics. Simple assaults include all assaults and attempted assaults which are not of an aggravated nature and do not result in serious injury to the victim (not shown).

**Figure 6
NUMBER OF AGGRAVATED ASSAULTS
CONTINUED TO DECLINE**



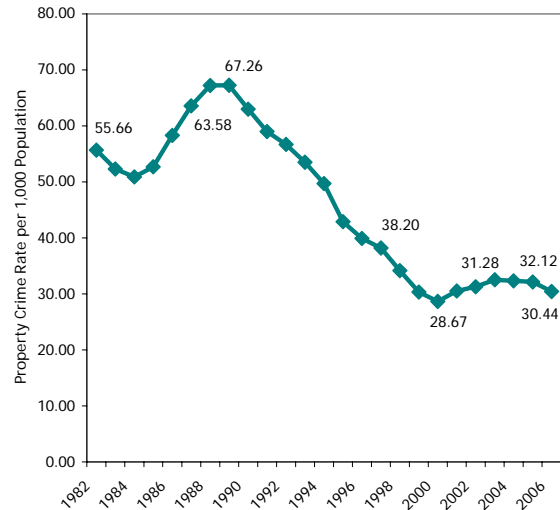
SOURCE: SANDAG

PROPERTY CRIME

With 93,355 property crimes reported (Appendix Tables 1 and 7), one in every 33 residents was the victim of a property crime in 2006, and almost nine in every ten crimes (87%) reported to law enforcement in the region represented property crime (not shown). In contrast to the 2006 violent crime rate, which was at its lowest point in 25 years, the property crime rate was at its lowest point in 2000 (28.67 per 1,000 population) (Figure 7). In 2006, the property crime rate of 30.44 was 6 percent higher than this 25-year low, but was still 45 percent lower than it was in 1982.

Over half (55%) of all property crimes in 2006 were larcenies, 26 percent were motor vehicle thefts, and 19 percent were burglaries (not shown).

**Figure 7
PROPERTY CRIME RATE DECREASED
SLIGHTLY FOR THIRD YEAR**



SOURCES: SANDAG; California Department of Finance; U.S. Census 1990; U.S. Census 2000

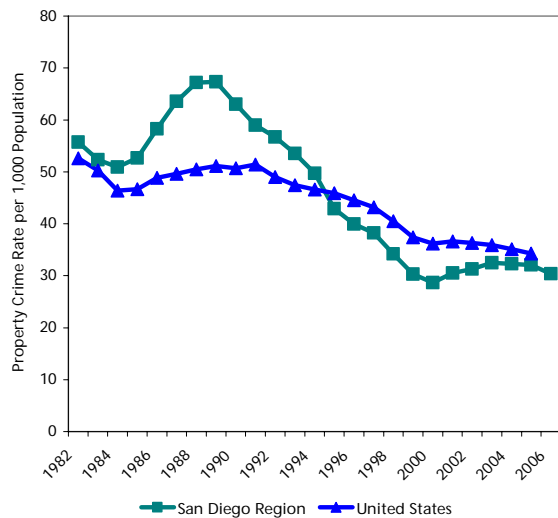
Across the region, 20 jurisdictions had a lower property crime rate in 2006 than 2005, and 5 had a higher rate. These 2006 rates ranged from 12.54 (in Ramona) to 60.57 (in Del Mar) per 1,000 (Appendix Table 4 and Appendix Map 2)⁶. When interpreting these statistics, it is important to note that a variety of factors can affect a jurisdiction's crime rate, such as daytime populations and accessibility.

In terms of dollar value, over \$293 million worth of property was stolen in the San Diego region in 2006, compared to approximately \$269 million in 2005 (Appendix Table 17). Forty-two percent (42%) of this property, which was valued at almost \$124 million, was recovered in 2006 (Appendix Tables 18 and 19).

⁶ The number of property crimes reported in each jurisdiction for 2002 through 2006 also are presented in Appendix Tables 10 through 14.

Figure 8 compares property crimes reported to law enforcement in the San Diego region from 1982 through 2006 to national statistics from 1982 through 2005 (the most recent available, as previously noted). In the early 1980s, the San Diego region had a similar property crime rate to the nation, but beginning in 1985, experienced a greater increase than the U.S. However, the local property crime rate began to decline in the mid 1990s, and has remained somewhat lower than the national rate since then. In 2005, the property crime rate for the region was 32.12, compared to 34.30 for the nation.

Figure 8
SAN DIEGO REGION HAS HAD A LOWER PROPERTY CRIME RATE THAN THE NATION SINCE 1995



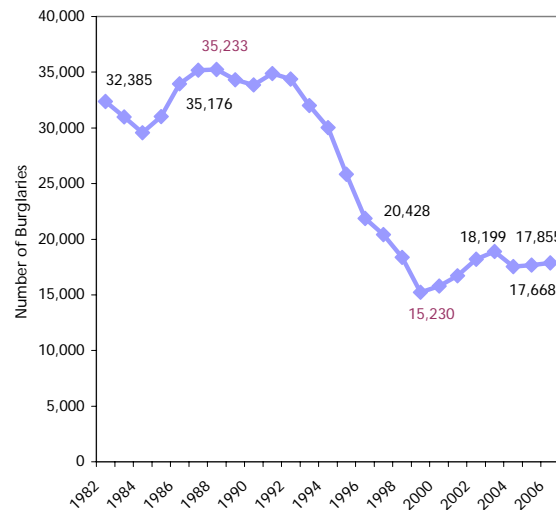
SOURCES: SANDAG; U.S. Department of Justice

Burglary

Over the past 25 years, the number of burglaries was greatest between 1982 (32,385) and 1991 (34,844), when it began to decline in 1992, reaching a low of 15,230 in 1999. Since then, there have been several years of increases, as well as one small decrease (Figure 9 and Appendix Table 8). There were 17,855 burglaries in the San Diego

region in 2006, with slightly over half (55%) representing household burglaries, which equates to 1 in every 109 households being burglarized. In 2006, 31 percent of all burglaries involved a forced entry, with the rest described as no forced entry (51%) or unsuccessful/attempt (18%) (not shown).

Figure 9
NUMBER OF BURGLARIES INCREASED SLIGHTLY FROM 2005

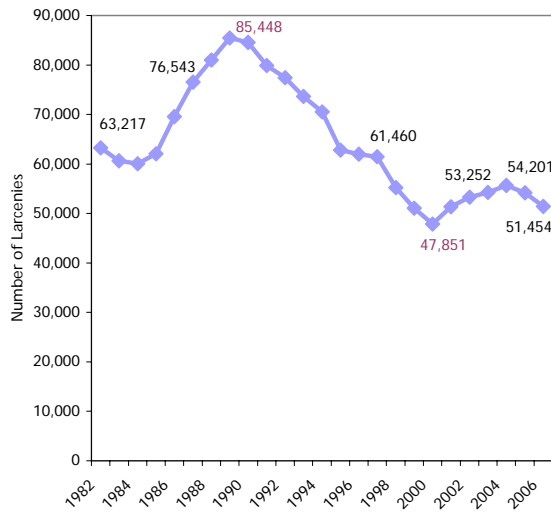


SOURCE: SANDAG

Larceny

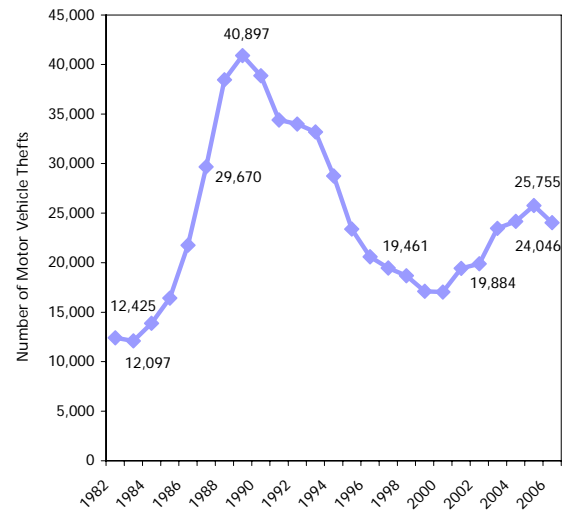
Larceny, or theft, is the most common crime, with one reported to law enforcement about every ten minutes in 2006 (not shown). Beginning in 1985, the number of larcenies reported in the San Diego region began an upward trend, peaking at 85,448 in 1989, and then decreasing to a low of 47,851 in 2000 (Figure 10 and Appendix Table 8). Since then, there were four years of increases, with decreases seen again in 2005 and 2006 (to 51,454). The most common larceny type was theft from inside motor vehicles (47%), with the second most common from buildings (19%). Additionally, most larcenies (62%) involved property valued at \$400 or less (not shown).

Figure 10
LARCENIES DECREASED FOR SECOND
TIME AFTER RECENT INCREASES



SOURCE: SANDAG

Figure 11
VEHICLE THEFT SHOWED
ONE YEAR DECLINE



SOURCE: SANDAG

Motor Vehicle Theft

Beginning in 1984, the number of motor vehicles stolen in the San Diego region began to increase, reaching a high in 1989 of 40,897 (Figure 11 and Appendix Table 8). This upward trend was followed by an overall decrease to 17,038 in 2000. Since then, the number increased for five consecutive years, to 25,755 stolen vehicles in 2005, with 2006 representing the first decrease (7% compared to last year) since 1999-2000. This equates to 1 in every 97 registered motor vehicles being stolen in the San Diego region in 2006. In terms of dollar amount, the value of these stolen vehicles was estimated at over \$168 million, and represented over half (57%) of the value of total property stolen (not shown).

Arson

Unlike other FBI Index offenses, when arson is committed in concert with another FBI Index offense, both incidents must be reported, which is why arson is presented separately from other crime statistics. There were 488 arsons reported in 2006, which was lower than in 2005 (when there were 555). Forty-three percent (43%) of arsons in 2006 were of structures, and 57 percent were categorized as mobile and other non-structural property types (not shown).

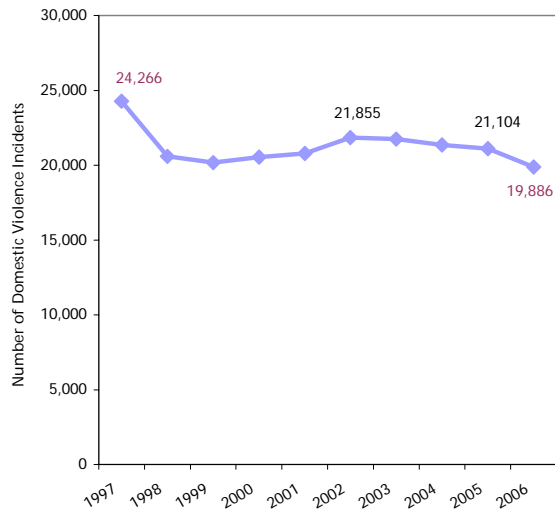
DOMESTIC VIOLENCE

Law enforcement agencies also track domestic violence incidents, some of which are included in the previously reported numbers in this bulletin. For example, a domestic violence incident could include a Part I violent crime (e.g., aggravated assault) or some type of property crime (e.g., burglary

or vandalism). Over the past ten years⁷, the number of domestic violence incidents has varied from a high of 24,266 in 1997 to a low of 19,886 in 2006 (Figure 12). This represented the fourth consecutive decrease.

Across the 19 jurisdictions (statistics are not available for the unincorporated areas separately), 8 agencies reported one-year increases in the number of domestic violence incidents (ranging from 1% to 27%), 10 reported decreases (ranging from 1% to 17%), and one had a small number of incidents across the years, limiting the types of valid comparisons that could be made (Appendix Table 9).

Figure 12
DOMESTIC VIOLENCE DOWN
FOR FOURTH CONSECUTIVE YEAR



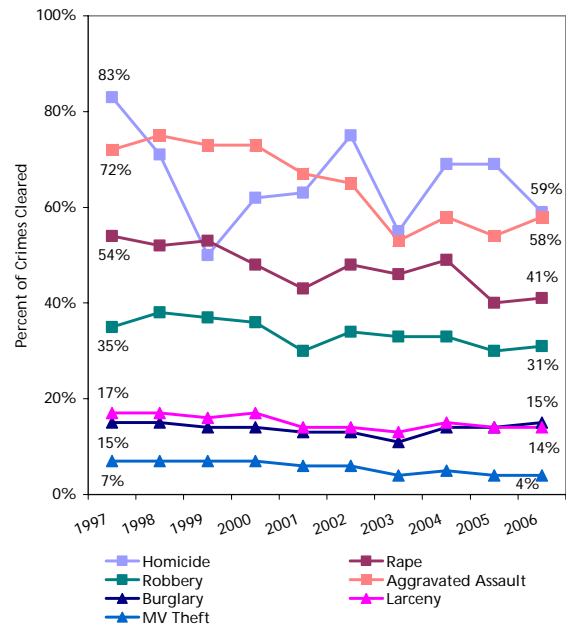
SOURCE: SANDAG

CLEARANCE RATES

A crime is cleared or solved for crime-reporting purposes when at least one person

is arrested and charged with the offense⁸. Not surprisingly, the clearance rates in 2006 varied by crime type, with violent crimes cleared more frequently than property crimes. Overall, 48 percent of violent crimes that were open for investigation in the region were cleared (with a range across departments of 25% to 83%), compared to 12 percent of property crimes (with a range of 5% to 22%) (Appendix Tables 15 and 16). As Figure 13 shows, the crimes of homicide and aggravated assault consistently have had the highest clearance rates, which is related to the fact that these crimes more frequently involve individuals with face-to-face contact. While the motor vehicle theft clearance rate is the lowest of the seven Part I crimes, it is important to note that the vehicle recovery rate is higher (68% of the dollar value of stolen vehicles) (not shown).

Figure 13
HOMICIDES AND ASSAULTS HAVE
THE HIGHEST CLEARANCE RATES



SOURCE: SANDAG

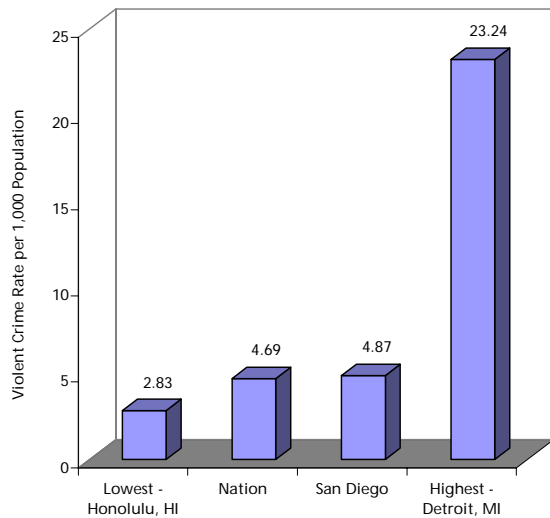
⁷ Due to changes to legislation regarding mandated reporting, only ten years of trend data are compared for statistical purposes.

⁸ It is important to note that a crime that occurred in one calendar year may be cleared in that year or a future year.

HOW DOES SAN DIEGO COMPARE TO OTHER U.S. CITIES?

National information for crime rates for 30 U.S. cities (rather than counties or regions) with populations of 500,000 or more currently is available for calendar year 2005 (one year prior to the other statistics presented in this report). In 2005, the City of San Diego⁹ was the seventh largest city in the U.S., with a population of 1.31 million. As Figures 14 and 15 show, the City of San Diego was one of the safest places to live, compared to other large metropolitan areas in terms of both violent crime (fourth lowest, following Honolulu, HI, San Jose, CA, and El Paso, TX) and property crime (fifth lowest, following New York, NY, San Jose, CA, Los Angeles, CA, and El Paso, TX). In 2004, San Diego was ranked third safest in terms of violent crime rates and fifth safest in terms of property crime rates.

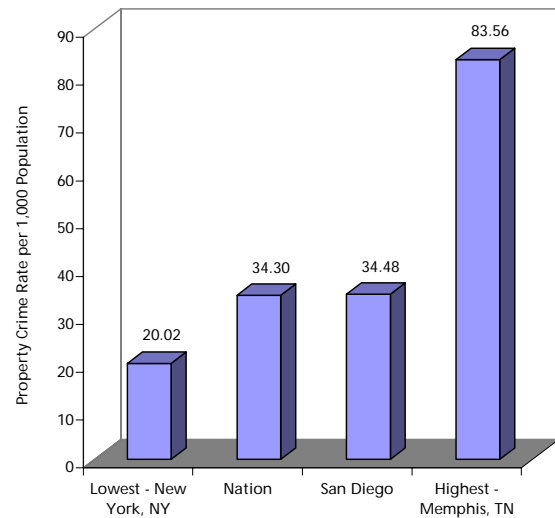
Figure 14
CITY OF SAN DIEGO HAD FOURTH LOWEST VIOLENT CRIME RATE IN 2005



SOURCES: SANDAG; U.S. Department of Justice

⁹ In 2006, 48 percent of the region's violent crime and 47 percent of the property crime was reported by the San Diego Police Department.

Figure 15
CITY OF SAN DIEGO HAD FIFTH LOWEST PROPERTY CRIME RATE IN 2005



SOURCES: SANDAG; U.S. Department of Justice

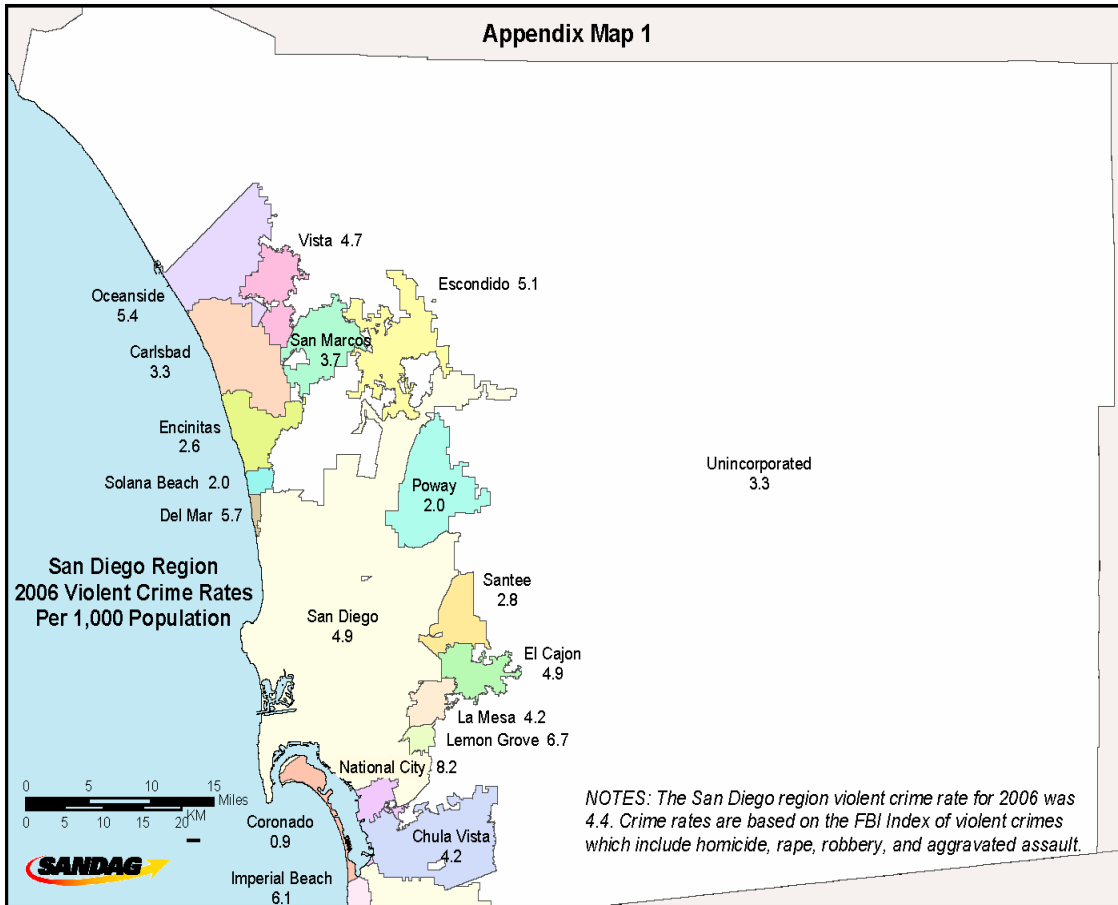
SUMMARY

Compared to 25 years earlier, the San Diego region is a safer place to live in terms of both violent and property crime. However, the increased number of homicides and robberies, which is an issue faced by other jurisdictions across the country, remains a significant concern. Residents were most likely to be a victim of a larceny in 2006, with one theft reported every 10 minutes to local law enforcement agencies. Motor vehicle theft decreased for the first time in five years and showed a one-year decrease greater than other property crimes.

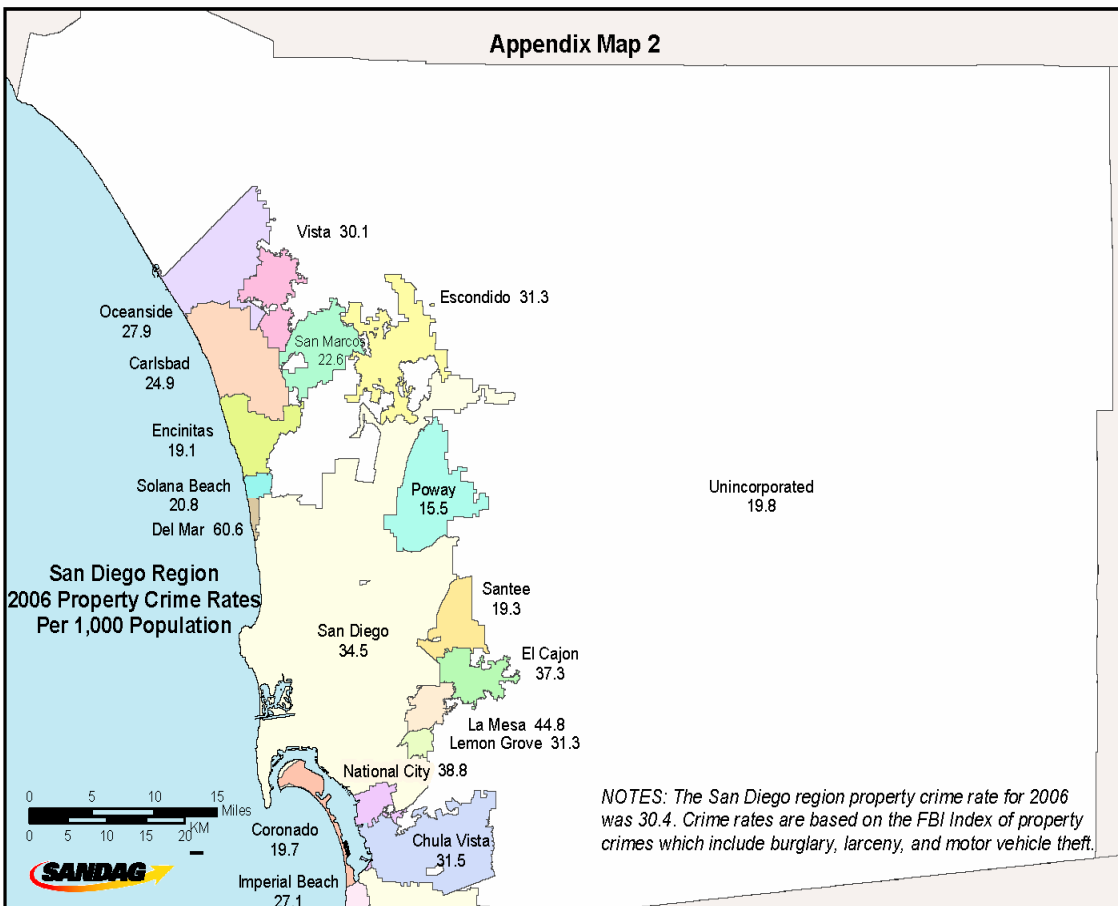
For those interested in more detailed 2006 statistics, please contact Donna Allnutt at (619) 699-6912, and for those interested in more recent statistics for a specific area of San Diego County, as well as maps of specific areas, please visit the ARJIS (Automated Regional Justice Information System) Web site at www.arjis.org. The FY 2007 Public Safety Budget bulletin is planned for release in May 2007.

APPENDIX

Appendix Map 1



Appendix Map 2



SOURCE: Populations used to compute crime rates reflect SANDAG estimates based on the most current California Department of Finance published figures.

Appendix Table 1
NUMBER OF CRIMES BY OFFENSE
San Diego Region, 2002, 2005, and 2006

	2002	2005	2006	Change	
				2002-2006	2005-2006
Homicide	87	98	126	45%	29%
Rape	798	814	777	-3%	-5%
Robbery	3,342	3,943	4,313	29%	9%
Aggravated Assault	9,805	8,996	8,360	-15%	-7%
Violent Crime Total	14,032	13,851	13,576	-3%	-2%
Burglary	18,199	17,668	17,855	-2%	1%
Larceny Theft	53,252	54,201	51,454	-3%	-5%
Motor Vehicle Theft	19,884	25,755	24,046	21%	-7%
Property Crime Total	91,335	97,624	93,355	2%	-4%
FBI INDEX	105,367	111,475	106,931	1%	-4%

SOURCE: SANDAG

Appendix Table 2
FBI INDEX CRIME RATES PER 1,000 POPULATION BY JURISDICTION
San Diego Region, 2002, 2005, and 2006

	2002	2005	2006	Change	
				2002-2006	2005-2006
Carlsbad	25.79	28.14	28.23	9%	<1%
Chula Vista	39.07	38.84	35.72	-9%	-8%
Coronado	15.84	20.41	20.53	30%	1%
El Cajon	49.45	46.86	42.15	-15%	-10%
Escondido	40.07	39.79	36.37	-9%	-9%
La Mesa	42.34	43.57	49.03	16%	13%
National City	47.29	50.06	47.01	-1%	-6%
Oceanside	41.62	38.07	33.21	-20%	-13%
San Diego	39.88	40.62	39.35	-1%	-3%
Sheriff - Total	25.99	26.81	25.18	-3%	-6%
Del Mar	56.43	61.01	66.31	18%	9%
Encinitas	26.65	22.47	21.67	-19%	-4%
Imperial Beach	30.34	33.40	33.20	9%	-1%
Lemon Grove	38.79	37.78	37.97	-2%	1%
Poway	19.54	18.03	17.55	-10%	-3%
San Marcos	24.17	25.66	26.34	9%	3%
Santee	25.72	27.25	22.03	-14%	-19%
Solana Beach	30.18	25.17	22.74	-25%	-10%
Vista	34.57	37.35	34.77	1%	-7%
Unincorporated	23.55	24.95	23.06	-2%	-8%
Alpine	26.70	25.90	23.65	-11%	-9%
Fallbrook	20.06	31.01	28.13	40%	-9%
Lakeside	24.75	29.58	24.93	1%	-16%
Ramona	14.79	15.74	14.81	<1%	-6%
Spring Valley	28.80	28.81	29.86	4%	4%
Valley Center	22.72	26.57	24.61	8%	-7%
Other Unincorporated	23.40	21.74	19.70	-16%	-9%
TOTAL	36.08	36.68	34.87	-3%	-5%

NOTES: The FBI Crime Index includes homicide, rape, robbery, aggravated assault, burglary, larceny, and motor vehicle theft. Percent changes are based on computed crime rates rounded to the precision level of two decimal places. Populations used to compute crime rates reflect the most current California Department of Finance estimates.

SOURCES: California Department of Finance; SANDAG

Appendix Table 3
VIOLENT CRIME RATE PER 1,000 POPULATION BY JURISDICTION
San Diego Region, 2002, 2005, and 2006

	2002	2005	2006	Change	
				2002-2006	2005-2006
Carlsbad	2.38	2.70	3.34	40%	24%
Chula Vista	4.66	4.28	4.24	-9%	-1%
Coronado	1.05	0.82	0.88	--	--
El Cajon	5.62	5.32	4.86	-14%	-9%
Escondido	4.43	4.91	5.07	14%	3%
La Mesa	3.72	3.60	4.22	13%	17%
National City	9.51	7.17	8.25	-13%	15%
Oceanside	6.67	5.64	5.35	-20%	-5%
San Diego	5.72	5.08	4.87	-15%	-4%
Sheriff - Total	3.30	3.72	3.50	6%	-6%
Del Mar	4.44	2.21	5.75	--	--
Encinitas	2.95	2.73	2.59	-12%	-5%
Imperial Beach	5.88	4.78	6.10	4%	28%
Lemon Grove	6.08	6.13	6.70	10%	9%
Poway	1.95	1.88	2.04	5%	9%
San Marcos	3.14	3.26	3.73	19%	14%
Santee	2.57	3.00	2.76	7%	-8%
Solana Beach	2.11	1.80	1.95	--	--
Vista	4.30	5.65	4.72	10%	-16%
Unincorporated	3.09	3.68	3.25	5%	-12%
Alpine	2.73	2.68	2.61	-4%	-3%
Fallbrook	2.77	3.49	2.82	2%	-19%
Lakeside	3.02	4.13	3.86	28%	-7%
Ramona	1.69	2.70	2.28	35%	-16%
Spring Valley	4.23	4.64	4.07	-4%	-12%
Valley Center	4.20	3.63	3.82	-9%	5%
Other Unincorporated	2.93	3.59	3.10	6%	-14%
TOTAL	4.81	4.56	4.43	-8%	-3%

NOTES: FBI Index violent crimes include homicide, rape, robbery, and aggravated assault. Percent changes are based on computed crime rates rounded to the precision level of two decimal places. Populations used to compute crime rates reflect the most current California Department of Finance estimates. Percent changes are not presented for crime rates based on offense numbers of 30 or less.

SOURCES: California Department of Finance; SANDAG

Appendix Table 4
PROPERTY CRIME RATE PER 1,000 POPULATION BY JURISDICTION
San Diego Region, 2002, 2005, and 2006

	2002	2005	2006	Change	
				2002-2006	2005-2006
Carlsbad	23.41	25.44	24.90	6%	-2%
Chula Vista	34.40	34.56	31.48	-8%	-9%
Coronado	14.79	19.59	19.66	33%	<1%
El Cajon	43.83	41.54	37.29	-15%	-10%
Escondido	35.64	34.88	31.31	-12%	-10%
La Mesa	38.62	39.97	44.81	16%	12%
National City	37.79	42.88	38.76	3%	-10%
Oceanside	34.95	32.44	27.86	-20%	-14%
San Diego	34.15	35.54	34.48	1%	-3%
Sheriff - Total	22.69	23.10	21.68	-4%	-6%
Del Mar	51.99	58.80	60.57	17%	3%
Encinitas	23.70	19.73	19.07	-20%	-3%
Imperial Beach	24.46	28.62	27.10	11%	-5%
Lemon Grove	32.71	31.65	31.27	-4%	-1%
Poway	17.59	16.15	15.51	-12%	-4%
San Marcos	21.03	22.40	22.61	8%	1%
Santee	23.15	24.25	19.27	-17%	-21%
Solana Beach	28.07	23.38	20.78	-26%	-11%
Vista	30.27	31.69	30.05	-1%	-5%
Unincorporated	20.46	21.27	19.81	-3%	-7%
Alpine	23.98	23.21	21.04	-12%	-9%
Fallbrook	17.29	27.53	25.31	46%	-8%
Lakeside	21.73	25.45	21.06	-3%	-17%
Ramona	13.11	13.04	12.54	-4%	-4%
Spring Valley	24.57	24.17	25.79	5%	7%
Valley Center	18.52	22.94	20.79	12%	-9%
Other Unincorporated	20.47	18.16	16.60	-19%	-9%
TOTAL	31.28	32.12	30.44	-3%	-5%

NOTES: FBI Index property crimes include burglary, larceny, and motor vehicle theft. Percent changes are based upon computed crime rates rounded to the precision level of two decimal places. Populations used to compute crime rates reflect the most current California Department of Finance estimates.

SOURCES: California Department of Finance; SANDAG

**Appendix Table 5
NUMBER OF FBI INDEX CRIMES BY JURISDICTION
San Diego Region, 2002, 2005, and 2006**

	2002	2005	2006	Change	
				2002-2006	2005-2006
Carlsbad	2,273	2,667	2,784	22%	4%
Chula Vista	7,463	8,416	7,981	7%	-5%
Coronado	407	549	539	32%	-2%
El Cajon	4,776	4,561	4,083	-15%	-10%
Escondido	5,495	5,603	5,120	-7%	-9%
La Mesa	2,357	2,430	2,732	16%	12%
National City	2,736	3,182	2,987	9%	-6%
Oceanside	6,964	6,640	5,809	-17%	-13%
San Diego	50,124	52,816	51,600	3%	-2%
Sheriff - Total	20,948	22,425	21,190	1%	-6%
Del Mar	254	276	300	18%	9%
Encinitas	1,597	1,405	1,361	-15%	-3%
Imperial Beach	836	922	915	9%	-1%
Lemon Grove	983	961	963	-2%	<-1%
Poway	971	910	887	-9%	-3%
San Marcos	1,470	1,867	2,021	37%	8%
Santee	1,380	1,479	1,205	-13%	-19%
Solana Beach	401	336	303	-24%	-10%
Vista	3,184	3,501	3,284	3%	-6%
Unincorporated	9,872	10,768	9,951	1%	-8%
Alpine	734	724	661	-10%	-9%
Fallbrook	969	1,575	1,428	47%	-9%
Lakeside	1,294	1,547	1,290	<-1%	-17%
Ramona	509	560	527	4%	-6%
Spring Valley	1,990	2,018	2,083	5%	3%
Valley Center	498	578	535	7%	-7%
Other Unincorporated	3,878	3,766	3,427	-12%	-9%
California Highway Patrol	134	159	126	-6%	-21%
California State University San Marcos	31	65	48	55%	-26%
San Diego State University	730	689	589	-19%	-15%
University of California San Diego	493	754	682	38%	-10%
San Diego Harbor Police	337	408	595	77%	46%
California State Parks and Recreation	99	111	66	-33%	-41%
TOTAL	105,367	111,475	106,931	1%	-4%

NOTE: The FBI Crime Index includes homicide, rape, robbery, aggravated assault, burglary, larceny, and motor vehicle theft.

SOURCE: SANDAG

Appendix Table 6
NUMBER OF VIOLENT CRIMES BY JURISDICTION
San Diego Region, 2002, 2005, and 2006

	2002	2005	2006	Change	
				2002-2006	2005-2006
Carlsbad	210	256	329	57%	29%
Chula Vista	891	927	947	6%	2%
Coronado	27	22	23	--	--
El Cajon	543	518	471	-13%	-9%
Escondido	608	692	713	17%	3%
La Mesa	207	201	235	14%	17%
National City	550	456	524	-5%	15%
Oceanside	1,116	983	936	-16%	-5%
San Diego	7,193	6,603	6,391	-11%	-3%
Sheriff - Total	2,658	3,107	2,942	11%	-5%
Del Mar	20	10	26	--	--
Encinitas	177	171	163	-8%	-5%
Imperial Beach	162	132	168	4%	27%
Lemon Grove	154	156	170	10%	9%
Poway	97	95	103	6%	8%
San Marcos	191	237	286	50%	21%
Santee	138	163	151	9%	-7%
Solana Beach	28	24	26	--	--
Vista	396	530	446	13%	-16%
Unincorporated	1,295	1,589	1,403	8%	-12%
Alpine	75	75	73	-3%	-3%
Fallbrook	134	177	143	7%	-19%
Lakeside	158	216	200	27%	-7%
Ramona	58	96	81	40%	-16%
Spring Valley	292	325	284	-3%	-13%
Valley Center	92	79	83	-10%	5%
Other Unincorporated	486	621	539	11%	-13%
California Highway Patrol	1	20	16	--	--
California State University San Marcos	0	3	2	--	--
San Diego State University	13	29	25	--	--
University of California San Diego	4	12	3	--	--
San Diego Harbor Police	9	17	16	--	--
California State Parks and Recreation	2	5	3	--	--
TOTAL	14,032	13,851	13,576	-3%	-2%

NOTES: FBI Index violent crimes include homicide, rape, robbery, and aggravated assault. Percent changes are not presented for offense numbers of 30 or less.

SOURCE: SANDAG

Appendix Table 7
NUMBER OF PROPERTY CRIMES BY JURISDICTION
San Diego Region, 2002, 2005, and 2006

	2002	2005	2006	Change	
				2002-2006	2005-2006
Carlsbad	2,063	2,411	2,455	19%	2%
Chula Vista	6,572	7,489	7,034	7%	-6%
Coronado	380	527	516	36%	-2%
El Cajon	4,233	4,043	3,612	-15%	-11%
Escondido	4,887	4,911	4,407	-10%	-10%
La Mesa	2,150	2,229	2,497	16%	12%
National City	2,186	2,726	2,463	13%	-10%
Oceanside	5,848	5,657	4,873	-17%	-14%
San Diego	42,931	46,213	45,209	5%	-2%
Sheriff - Total	18,290	19,318	18,248	<-1%	-6%
Del Mar	234	266	274	17%	3%
Encinitas	1,420	1,234	1,198	-16%	-3%
Imperial Beach	674	790	747	11%	-5%
Lemon Grove	829	805	793	-4%	-1%
Poway	874	815	784	-10%	-4%
San Marcos	1,279	1,630	1,735	36%	6%
Santee	1,242	1,316	1,054	-15%	-20%
Solana Beach	373	312	277	-26%	-11%
Vista	2,788	2,971	2,838	2%	-4%
Unincorporated	8,577	9,179	8,548	<-1%	-7%
Alpine	659	649	588	-11%	-9%
Fallbrook	835	1,398	1,285	54%	-8%
Lakeside	1,136	1,331	1,090	-4%	-18%
Ramona	451	464	446	-1%	-4%
Spring Valley	1,698	1,693	1,799	6%	6%
Valley Center	406	499	452	11%	-9%
Other Unincorporated	3,392	3,145	2,888	-15%	-8%
California Highway Patrol	133	139	110	-17%	-21%
California State University San Marcos	31	62	46	48%	-26%
San Diego State University	717	660	564	-21%	-15%
University of California San Diego	489	742	679	39%	-8%
San Diego Harbor Police	328	391	579	77%	48%
California State Parks and Recreation	97	106	63	-35%	-41%
TOTAL	91,335	97,624	93,355	2%	-4%

NOTE: FBI Index property crimes include burglary, larceny, and motor vehicle theft.

SOURCE: SANDAG

**Appendix Table 8
NUMBER OF CRIMES BY OFFENSE
San Diego Region, 1997-2006**

	Homicide	Rape	Robbery	Aggravated Assault	Residential Burglary	Non-Residential Burglary	Total Burglary	Larceny Over \$400	Larceny \$400 and Under	Total Larceny	Motor Vehicle Theft	FBI Crime Index	California Crime Index	Population
1997	125	882	4,788	12,209	12,675	7,753	20,428	17,699	43,761	61,460	19,461	119,353	57,893	2,653,400
1998	86	779	4,227	11,501	10,966	7,412	18,378	16,484	38,767	55,251	18,685	108,907	53,656	2,702,800
1999	106	810	3,468	9,915	8,772	6,458	15,230	15,820	35,263	51,083	17,113	97,725	46,642	2,751,000
2000	97	801	3,347	9,504	9,066	6,711	15,777	15,457	32,394	47,851	17,038	94,415	46,564	2,813,833
2001	92	830	3,430	10,237	9,681	7,044	16,725	17,164	34,156	51,320	19,421	102,055	50,735	2,863,657
2002	87	798	3,342	9,805	10,236	7,963	18,199	18,568	34,684	53,252	19,884	105,367	52,115	2,920,010
2003	130	856	3,375	9,646	10,706	8,187	18,893	18,179	36,102	54,281	23,460	110,641	56,360	2,971,805
2004	128	797	3,588	9,367	10,108	7,437	17,545	19,293	36,376	55,669	24,172	111,266	55,597	3,013,014
2005	98	814	3,943	8,996	9,948	7,720	17,668	19,892	34,309	54,201	25,755	111,475	57,274	3,039,277
2006	126	777	4,313	8,360	9,783	8,072	17,855	19,657	31,797	51,454	24,046	106,931	55,477	3,066,820

NOTES: The FBI Crime Index includes homicide, rape, robbery, and aggravated assault in the violent category and burglary, larceny, and motor vehicle theft in the property category. The California Crime Index includes all FBI Index crimes except larceny.

SOURCE: SANDAG

Appendix Table 9
NUMBER OF DOMESTIC VIOLENCE INCIDENTS BY JURISDICTION
San Diego Region, 2002, 2005, and 2006

	2002	2005	2006	Change	
				2002-2006	2005-2006
Carlsbad	345	372	472	37%	27%
Chula Vista	1,840	1,972	1,841	<1%	-7%
Coronado	62	54	50	-19%	-7%
El Cajon	903	732	634	-30%	-13%
Escondido	975	961	1,020	5%	6%
La Mesa	347	352	363	5%	3%
National City	598	577	479	-20%	-17%
Oceanside	2,069	2,267	2,310	12%	2%
San Diego	10,856	9,614	8,673	-20%	-10%
Sheriff - Total	3,827	4,153	3,951	3%	-5%
Del Mar	9	22	27	--	--
Encinitas	203	176	223	10%	27%
Imperial Beach	215	220	235	9%	7%
Lemon Grove	150	167	165	10%	-1%
Poway	155	171	147	-5%	-14%
San Marcos	356	371	373	5%	1%
Santee	308	309	276	-10%	-11%
Solana Beach	34	32	38	12%	19%
Vista	521	551	543	4%	-1%
Unincorporated	1,876	2,134	1,924	3%	-10%
TOTAL	21,855	21,104	19,886	-9%	-6%

NOTES: Total includes a relatively small number of incidents reported by the San Diego Harbor Police, California Highway Patrol, California Department of Parks and Recreation, California State University San Marcos, San Diego State University, University of California San Diego, and individual unincorporated areas in the Sheriff's jurisdiction. If comparison numbers equal 30 or less, percent changes are omitted.

SOURCE: SANDAG

**Appendix Table 10
NUMBER OF CRIMES BY OFFENSE BY JURISDICTION
San Diego Region, 2002**

	Homicide	Rape	Robbery	Aggravated Assault	Residential Burglary	Non-Residential Burglary	Total Burglary	Larceny Over \$400	Larceny \$400 and Under	Total Larceny	Motor Vehicle Theft	Arson	FBI Crime Index	California Crime Index
Carlsbad	1	16	49	144	199	227	426	494	902	1,396	241	13	2,273	877
Chula Vista	5	50	257	579	621	447	1,068	1,079	2,654	3,733	1,771	86	7,463	3,730
Coronado	0	7	7	13	55	46	101	100	133	233	46	2	407	174
El Cajon	3	56	125	359	401	384	785	800	1,756	2,556	892	36	4,776	2,220
Escondido	4	40	165	399	567	393	960	962	2,149	3,111	816	21	5,495	2,384
La Mesa	2	11	89	105	180	195	375	436	974	1,410	365	12	2,357	947
National City	4	32	156	358	99	298	397	289	811	1,100	689	10	2,736	1,636
Oceanside	5	75	285	751	709	400	1,109	1,173	2,651	3,824	915	40	6,964	3,140
San Diego	47	330	1,627	5,189	4,599	3,040	7,639	9,020	15,557	24,577	10,715	206	50,124	25,547
Sheriff - Total	16	178	574	1,890	2,777	2,428	5,205	3,650	6,229	9,879	3,206	149	20,948	11,069
Del Mar	0	1	5	14	25	37	62	66	75	141	31	3	254	113
Encinitas	0	13	42	122	161	197	358	328	545	873	189	7	1,597	724
Imperial Beach	0	20	28	114	85	85	170	101	215	316	188	9	836	520
Lemon Grove	0	8	57	89	91	158	249	128	258	386	194	4	983	597
Poway	0	5	11	81	114	129	243	183	354	537	94	11	971	434
San Marcos	1	8	46	136	200	237	437	229	414	643	199	6	1,470	827
Santee	0	11	18	109	139	146	285	228	541	769	188	8	1,380	611
Solana Beach	0	1	13	14	60	52	112	84	128	212	49	2	401	189
Vista	4	23	112	257	408	378	786	577	1,013	1,590	412	13	3,184	1,594
Unincorporated	11	88	242	954	1,494	1,009	2,503	1,726	2,686	4,412	1,662	86	9,872	5,460
Alpine	3	4	15	53	97	68	165	133	219	352	142	8	734	382
Fallbrook	2	11	26	95	174	117	291	161	260	421	123	5	969	548
Lakeside	0	9	20	129	188	102	290	220	395	615	231	0	1,294	679
Ramona	1	3	12	42	59	67	126	98	166	264	61	4	509	245
Spring Valley	2	18	87	185	279	176	455	315	504	819	424	0	1,990	1,171
Valley Center	2	4	17	69	70	59	129	90	107	197	80	2	498	301
Other Unincorporated	1	39	65	381	627	420	1,047	709	1,035	1,744	601	67	3,878	2,134
California Highway Patrol	0	0	0	1	0	2	2	6	41	47	84	0	134	87
California State University San Marcos	0	0	0	0	0	4	4	5	20	25	2	0	31	6
San Diego State University	0	2	2	9	18	17	35	248	355	603	79	2	730	127
University of California San Diego	0	1	1	2	11	38	49	111	277	388	52	2	493	105
San Diego Harbor Police	0	0	4	5	0	14	14	174	140	314	0	1	337	23
California State Parks and Recreation	0	0	1	1	0	30	30	21	35	56	11	5	99	43
TOTAL	87	798	3,342	9,805	10,236	7,963	18,199	18,568	34,684	53,252	19,884	585	105,367	52,115

NOTE: The California Crime Index (CCI) includes all FBI Index crimes except larceny theft.

SOURCE: SANDAG

Appendix Table 11
NUMBER OF CRIMES BY OFFENSE BY JURISDICTION
San Diego Region, 2003

	Homicide	Rape	Robbery	Aggravated Assault	Residential Burglary	Non-Residential Burglary	Total Burglary	Larceny Over \$400	Larceny \$400 and Under	Total Larceny	Motor Vehicle Theft	Arson	FBI Crime Index	California Crime Index
Carlsbad	4	14	64	184	240	256	496	493	952	1,445	258	13	2,465	1,020
Chula Vista	7	48	249	472	606	398	1,004	1,137	2,817	3,954	2,148	44	7,882	3,928
Coronado	0	5	3	27	73	31	104	144	280	424	72	11	635	211
El Cajon	4	43	154	354	557	330	887	689	1,611	2,300	1,152	26	4,894	2,594
Escondido	5	46	161	379	499	464	963	952	2,142	3,094	997	32	5,645	2,551
La Mesa	2	12	66	93	198	160	358	367	847	1,214	554	15	2,299	1,085
National City	9	33	155	349	132	205	337	407	1,000	1,407	996	13	3,286	1,879
Oceanside	8	63	332	687	650	464	1,114	1,010	2,627	3,637	739	20	6,580	2,943
San Diego	65	406	1,626	5,269	4,925	3,151	8,076	9,155	16,584	25,739	12,567	238	53,748	28,009
Sheriff - Total	26	178	550	1,781	2,787	2,600	5,387	3,306	6,380	9,686	3,676	159	21,284	11,598
Del Mar	0	3	3	4	35	34	69	60	66	126	58	1	263	137
Encinitas	0	10	40	100	157	172	329	288	516	804	244	7	1,527	723
Imperial Beach	0	8	34	102	139	97	236	119	319	438	181	11	999	561
Lemon Grove	1	4	50	90	90	142	232	110	251	361	237	3	975	614
Poway	2	3	11	62	83	146	229	193	336	529	100	12	936	407
San Marcos	3	18	46	138	166	274	440	248	517	765	270	12	1,680	915
Santee	0	15	18	96	117	176	293	252	572	824	208	9	1,454	630
Solana Beach	0	3	5	12	40	63	103	70	87	157	38	1	318	161
Vista	2	30	122	227	405	430	835	397	896	1,293	474	26	2,983	1,690
Unincorporated	18	84	221	950	1,555	1,066	2,621	1,569	2,820	4,389	1,866	77	10,149	5,760
Alpine	0	1	11	54	88	76	164	126	198	324	146	1	700	376
Fallbrook	1	10	21	75	223	155	378	197	364	561	129	3	1,175	614
Lakeside	1	11	26	124	154	114	268	215	440	655	268	0	1,353	698
Ramona	2	5	7	79	79	105	184	116	282	398	54	1	729	331
Spring Valley	0	25	81	168	231	168	399	202	428	630	444	0	1,747	1,117
Valley Center	1	2	13	64	76	93	169	108	151	259	116	6	624	365
Other Unincorporated	13	30	62	386	704	355	1,059	605	957	1,562	709	66	3,821	2,259
California Highway Patrol	0	0	0	11	0	2	2	7	46	53	78	0	144	91
California State University San Marcos	0	0	0	1	0	6	6	6	19	25	1	0	33	8
San Diego State University	0	7	7	18	16	16	32	181	290	471	160	4	695	224
University of California San Diego	0	1	3	3	22	41	63	109	341	450	54	2	574	124
Harbor Police	0	0	4	9	0	25	25	184	128	312	2	3	352	40
California State Parks and Recreation	0	0	1	9	1	38	39	32	38	70	6	3	125	55
TOTAL	130	856	3,375	9,646	10,706	8,187	18,893	18,179	36,102	54,281	23,460	583	110,641	56,360

NOTE: The California Crime Index (CCI) includes all FBI Index crimes except larceny theft.

SOURCE: SANDAG

Appendix Table 12
NUMBER OF CRIMES BY OFFENSE BY JURISDICTION
San Diego Region, 2004

	Aggravated			Residential		Non-Residential	Total	Larceny	Larceny	Total	Motor	FBI		California
	Homicide	Rape	Robbery	Assault	Burglary	Burglary	Burglary	Over \$400	\$400 and Under	Larceny	Vehicle Theft	Arson	Crime Index	Crime Index
Carlsbad	2	13	42	213	253	204	457	502	974	1,476	230	8	2,433	957
Chula Vista	15	50	296	477	687	497	1,184	1,252	2,735	3,987	2,043	31	8,052	4,065
Coronado	0	10	15	16	74	41	115	108	347	455	88	1	699	244
El Cajon	7	21	164	353	395	420	815	736	1,618	2,354	1,090	32	4,804	2,450
Escondido	3	22	198	453	412	373	785	1,026	2,268	3,294	1,576	35	6,331	3,037
La Mesa	0	10	72	118	183	210	393	399	886	1,285	534	5	2,412	1,127
National City	5	16	139	261	135	255	390	366	1,178	1,544	900	15	3,255	1,711
Oceanside	9	77	289	648	706	419	1,125	1,181	2,985	4,166	824	33	7,138	2,972
San Diego	62	373	1,650	4,689	4,495	2,810	7,305	9,399	15,769	25,168	12,970	191	52,217	27,049
Sheriff - Total	25	192	709	2,096	2,713	2,119	4,832	3,802	6,711	10,513	3,709	160	22,076	11,563
Del Mar	0	2	3	8	14	15	29	78	63	141	27	0	210	69
Encinitas	2	15	38	95	145	140	285	298	503	801	165	6	1,401	600
Imperial Beach	1	8	48	133	137	99	236	124	332	456	203	23	1,085	629
Lemon Grove	1	7	47	115	83	150	233	115	338	453	228	5	1,084	631
Poway	0	4	10	61	83	107	190	202	359	561	98	13	924	363
San Marcos	1	17	61	171	148	198	346	264	580	844	305	12	1,745	901
Santee	1	16	44	104	103	135	238	260	530	790	204	4	1,397	607
Solana Beach	0	0	17	19	25	47	72	111	98	209	53	1	370	161
Vista	3	28	162	272	473	268	741	567	1,069	1,636	519	16	3,361	1,725
Unincorporated	16	95	279	1,118	1,502	960	2,462	1,783	2,839	4,622	1,907	80	10,499	5,877
Alpine	0	2	21	72	99	74	173	119	178	297	139	4	704	407
Fallbrook	1	13	22	77	248	124	372	229	426	655	154	7	1,294	639
Lakeside	3	14	28	105	173	146	319	238	433	671	277	0	1,417	746
Ramona	0	6	2	68	70	60	130	91	161	252	78	1	536	284
Spring Valley	9	12	110	255	242	165	407	273	483	756	497	0	2,046	1,290
Valley Center	1	8	26	53	76	70	146	99	113	212	102	11	548	336
Other Unincorporated	2	40	70	488	594	321	915	734	1,045	1,779	660	57	3,954	2,175
California Highway Patrol	0	0	0	15	0	3	3	2	36	38	71	0	127	89
California State University San Marcos	0	2	0	1	3	4	7	4	38	42	0	0	52	10
San Diego State University	0	9	6	9	19	31	50	162	270	432	83	6	589	157
University of California San Diego	0	2	1	3	32	31	63	157	375	532	47	4	648	116
Harbor Police	0	0	7	10	0	12	12	167	150	317	1	1	347	30
California State Parks and Recreation	0	0	0	5	1	8	9	30	36	66	6	3	86	20
TOTAL	128	797	3,588	9,367	10,108	7,437	17,545	19,293	36,376	55,669	24,172	525	111,266	55,597

NOTE: The California Crime Index (CCI) includes all FBI Index crimes except larceny theft.

SOURCE: SANDAG

**Appendix Table 13
NUMBER OF CRIMES BY OFFENSE BY JURISDICTION
San Diego Region, 2005**

				Non-		Larceny	Larceny	Motor		FBI		California		
	Homicide	Rape	Robbery	Aggravated Assault	Residential Burglary	Residential Burglary	Total Burglary	Over \$400	\$400 and Under	Total Larceny	Vehicle Theft	Arson	Crime Index	Crime Index
Carlsbad	2	11	79	164	285	232	517	540	1,108	1,648	246	11	2,667	1,019
Chula Vista	5	66	338	518	626	609	1,235	1,277	2,481	3,758	2,496	23	8,416	4,658
Coronado	0	6	6	10	69	20	89	127	222	349	89	5	549	200
El Cajon	2	40	171	305	296	473	769	658	1,480	2,138	1,136	36	4,561	2,423
Escondido	2	31	186	473	399	402	801	996	2,035	3,031	1,079	37	5,603	2,572
La Mesa	2	10	107	82	190	138	328	453	892	1,345	556	6	2,430	1,085
National City	4	16	182	254	122	254	376	369	1,040	1,409	941	15	3,182	1,773
Oceanside	7	78	264	634	718	347	1,065	1,096	2,750	3,846	746	33	6,640	2,794
San Diego	51	376	1,862	4,314	4,611	2,851	7,462	9,771	14,842	24,613	14,138	233	52,816	28,203
Sheriff - Total	23	170	725	2,189	2,589	2,320	4,909	3,982	6,361	10,343	4,066	151	22,425	12,082
Del Mar	0	0	1	9	24	26	50	87	92	179	37	0	276	97
Encinitas	3	11	45	112	165	159	324	330	394	724	186	7	1,405	681
Imperial Beach	0	3	41	88	99	89	188	111	224	335	267	4	922	587
Lemon Grove	1	6	59	90	93	115	208	102	237	339	258	6	961	622
Poway	1	11	20	63	70	102	172	201	350	551	92	7	910	359
San Marcos	0	15	57	165	121	238	359	318	671	989	282	10	1,867	878
Santee	1	16	30	116	143	138	281	301	499	800	235	9	1,479	679
Solana Beach	0	1	12	11	48	39	87	81	98	179	46	1	336	157
Vista	4	21	190	315	404	367	771	547	1,074	1,621	579	29	3,501	1,880
Unincorporated	13	86	270	1,220	1,422	1,047	2,469	1,904	2,722	4,626	2,084	78	10,768	6,142
Alpine	1	5	15	54	104	71	175	164	189	353	121	1	724	371
Fallbrook	0	11	43	123	259	203	462	260	499	759	177	7	1,575	816
Lakeside	0	13	34	169	169	138	307	289	426	715	309	0	1,547	832
Ramona	1	7	12	76	58	61	119	116	145	261	84	1	560	299
Spring Valley	7	14	77	227	245	135	380	275	466	741	572	0	2,018	1,277
Valley Center	1	9	6	63	62	101	163	114	116	230	106	13	578	348
Other Unincorporated	3	27	83	508	525	338	863	686	881	1,567	715	56	3,766	2,199
California Highway Patrol	0	0	2	18	2	9	11	4	28	32	96	0	159	127
California State University San Marcos	0	1	0	2	1	7	8	9	43	52	2	0	65	13
San Diego State University	0	8	10	11	14	11	25	217	330	547	88	0	689	142
University of California San Diego	0	1	4	7	25	30	55	157	462	619	68	1	754	135
San Diego Harbor Police	0	0	7	10	0	9	9	204	177	381	1	2	408	27
California State Parks and Recreation	0	0	0	5	1	8	9	32	58	90	7	2	111	21
TOTAL	98	814	3,943	8,996	9,948	7,720	17,668	19,892	34,309	54,201	25,755	555	111,475	57,274

NOTE: The California Crime Index (CCI) includes all FBI Index crimes except larceny theft.

SOURCE: SANDAG

**Appendix Table 14
NUMBER OF CRIMES BY OFFENSE BY JURISDICTION
San Diego Region, 2006**

				Non-		Larceny	Larceny	Motor		FBI		California		
	Homicide	Rape	Robbery	Aggravated Assault	Residential Burglary	Residential Burglary	Total Burglary	Over \$400	\$400 and Under	Total Larceny	Vehicle Theft	Arson	Crime Index	Crime Index
Carlsbad	1	11	77	240	320	267	587	657	991	1,648	220	18	2,784	1,136
Chula Vista	7	70	351	519	687	497	1,184	1,321	2,496	3,817	2,033	41	7,981	4,164
Coronado	0	3	9	11	48	19	67	114	265	379	70	1	539	160
El Cajon	4	28	154	285	270	368	638	618	1,336	1,954	1,020	25	4,083	2,129
Escondido	3	33	235	442	407	351	758	885	1,802	2,687	962	17	5,120	2,433
La Mesa	3	8	111	113	222	225	447	480	979	1,459	591	16	2,732	1,273
National City	2	9	211	302	143	310	453	314	811	1,125	885	12	2,987	1,862
Oceanside	8	48	245	635	682	297	979	999	2,262	3,261	633	21	5,809	2,548
San Diego	68	348	2,164	3,811	4,491	3,255	7,746	9,824	14,301	24,125	13,338	185	51,600	27,475
Sheriff - Total	30	211	737	1,964	2,459	2,366	4,825	3,754	5,656	9,410	4,013	144	21,190	11,780
Del Mar	0	1	7	18	22	32	54	108	82	190	30	0	300	110
Encinitas	3	8	48	104	160	164	324	279	425	704	170	3	1,361	657
Imperial Beach	1	17	34	116	94	75	169	119	223	342	236	3	915	573
Lemon Grove	1	12	65	92	65	146	211	99	220	319	263	9	963	644
Poway	0	13	21	69	84	126	210	207	248	455	119	5	887	432
San Marcos	3	19	75	189	196	288	484	311	607	918	333	14	2,021	1,103
Santee	0	14	44	93	122	148	270	243	342	585	199	8	1,205	620
Solana Beach	1	0	12	13	31	46	77	68	92	160	40	1	303	143
Vista	1	34	152	259	383	346	729	541	981	1,522	587	19	3,284	1,762
Unincorporated	20	93	279	1,011	1,302	995	2,297	1,779	2,436	4,215	2,036	82	9,951	5,736
Alpine	1	4	17	51	102	82	184	127	154	281	123	4	661	380
Fallbrook	2	11	46	84	179	163	342	329	461	790	153	7	1,428	638
Lakeside	2	16	32	150	151	120	271	233	318	551	268	0	1,290	739
Ramona	0	6	16	59	61	76	137	95	144	239	70	4	527	288
Spring Valley	2	14	84	184	256	177	433	268	460	728	638	0	2,083	1,355
Valley Center	4	7	15	57	55	77	132	100	152	252	68	3	535	283
Other Unincorporated	9	35	69	426	498	300	798	627	747	1,374	716	64	3,427	2,053
California Highway Patrol	0	0	0	16	2	10	12	2	20	22	76	0	126	104
California State University San Marcos	0	1	0	1	0	6	6	6	33	39	1	0	48	9
San Diego State University	0	7	13	5	20	15	35	152	258	410	119	2	589	179
University of California San Diego	0	0	1	2	30	61	91	176	337	513	75	5	682	169
San Diego Harbor Police	0	0	5	11	1	23	24	334	219	553	2	0	595	42
California State Parks and Recreation	0	0	0	3	1	2	3	21	31	52	8	1	66	14
TOTAL	126	777	4,313	8,360	9,783	8,072	17,855	19,657	31,797	51,454	24,046	488	106,931	55,477

NOTE: The California Crime Index (CCI) includes all FBI Index crimes **except** larceny theft.

SOURCE: SANDAG

Appendix Table 15
VIOLENT CRIME CLEARANCE RATE BY JURISDICTION
San Diego Region, 2002, 2005, and 2006

	2002	2005	2006	Difference	
				2002-2006	2005-2006
Carlsbad	47%	49%	42%	-5%	-7%
Chula Vista	41%	34%	37%	-4%	3%
Coronado	52%	77%	52%	0%	-25%
El Cajon	58%	54%	54%	-4%	0%
Escondido	55%	43%	44%	-11%	1%
La Mesa	66%	53%	51%	-15%	-2%
National City	39%	29%	25%	-14%	-4%
Oceanside	47%	35%	39%	-8%	4%
San Diego	60%	52%	46%	-14%	-6%
Sheriff - Total	64%	44%	64%	0%	20%
Del Mar	50%	30%	62%	12%	32%
Encinitas	54%	49%	55%	1%	6%
Imperial Beach	60%	42%	66%	6%	24%
Lemon Grove	56%	37%	63%	7%	26%
Poway	61%	54%	51%	-10%	-3%
San Marcos	76%	36%	58%	-18%	22%
Santee	75%	50%	63%	-12%	13%
Solana Beach	32%	33%	50%	18%	17%
Vista	59%	39%	67%	8%	28%
Unincorporated	67%	45%	66%	-1%	21%
Alpine	63%	39%	40%	-23%	1%
Fallbrook	77%	48%	55%	-22%	7%
Ramona	88%	48%	83%	-5%	35%
Valley Center	57%	52%	65%	8%	13%
Other Unincorporated	126%	84%	130%	4%	46%
California Highway Patrol	0%	60%	75%	75%	15%
California State University San Marcos	--	0%	100%	--	--
San Diego State University	31%	17%	36%	--	--
University of California San Diego	50%	58%	33%	-17%	-25%
San Diego Harbor Police	67%	47%	25%	-42%	-22%
California State Parks and Recreation	50%	20%	67%	17%	47%
TOTAL	57%	46%	48%	-9%	2%

NOTE: California State University San Marcos did not receive any violent crime reports in 2002 and reported very few violent crime incidents or clearances in 2005 and 2006.

SOURCE: SANDAG

**Appendix Table 16
PROPERTY CRIME CLEARANCE RATE BY JURISDICITON
San Diego Region, 2002, 2005, and 2006**

	2002	2005	2006	Difference	
				2002-2006	2005-2006
Carlsbad	16%	21%	16%	0%	-5%
Chula Vista	14%	12%	14%	0%	2%
Coronado	7%	13%	12%	5%	-1%
El Cajon	14%	18%	17%	3%	-1%
Escondido	14%	15%	16%	2%	1%
La Mesa	15%	15%	14%	-1%	-1%
National City	13%	15%	12%	-1%	-3%
Oceanside	10%	13%	11%	1%	-2%
San Diego	11%	10%	10%	-1%	0%
Sheriff - Total	12%	10%	13%	1%	3%
Del Mar	3%	2%	5%	2%	3%
Encinitas	11%	9%	13%	2%	4%
Imperial Beach	9%	6%	9%	0%	3%
Lemon Grove	16%	14%	19%	3%	5%
Poway	17%	15%	16%	-1%	1%
San Marcos	11%	20%	18%	7%	-2%
Santee	16%	14%	17%	1%	3%
Solana Beach	8%	7%	11%	3%	4%
Vista	12%	12%	12%	0%	0%
Unincorporated	11%	8%	11%	0%	3%
Alpine	15%	6%	11%	-4%	5%
Fallbrook	9%	8%	8%	-1%	0%
Ramona	16%	8%	22%	6%	14%
Valley Center	8%	7%	15%	7%	8%
Other Unincorporated	19%	15%	21%	2%	6%
California Highway Patrol	0%	4%	12%	12%	8%
California State University San Marcos	0%	2%	11%	11%	9%
San Diego State University	7%	12%	14%	7%	2%
University of California San Diego	7%	7%	5%	-2%	-2%
San Diego Harbor Police	13%	7%	9%	-4%	2%
California State Parks and Recreation	2%	3%	8%	6%	5%
TOTAL	12%	11%	12%	0%	1%

SOURCE: SANDAG

Appendix Table 17
DOLLAR VALUE OF PROPERTY STOLEN BY JURISDICTION
San Diego Region, 2002, 2005, and 2006

	2002	2005	2006	Change	
				2002-2006	2005-2006
Carlsbad	\$5,976,114	\$7,116,017	\$5,975,189	<-1%	-16%
Chula Vista	19,140,233	23,721,811	26,749,110	40%	13%
Coronado	1,073,144	1,269,384	1,569,441	46%	24%
El Cajon	9,553,053	11,524,166	11,055,443	16%	-4%
Escondido	9,016,970	10,930,321	10,024,850	11%	-8%
La Mesa	4,222,395	5,789,586	5,741,366	36%	-1%
National City	6,232,461	7,879,328	8,102,703	30%	3%
Oceanside	10,053,496	8,246,456	8,128,425	-19%	-1%
San Diego	111,867,154	131,449,777	149,020,961	33%	13%
Sheriff - Total	37,516,539	58,359,676	62,101,402	66%	6%
Del Mar	598,016	2,312,438	1,068,863	79%	-54%
Encinitas	3,260,550	4,183,802	2,876,991	-12%	-31%
Imperial Beach	1,574,371	2,103,170	2,036,472	29%	-3%
Lemon Grove	1,610,835	2,479,902	2,038,988	27%	-18%
Poway	2,627,369	1,458,137	2,406,108	-8%	65%
San Marcos	500,781	3,380,317	3,602,935	619%	7%
Santee	2,063,003	2,753,888	2,966,456	44%	8%
Solana Beach	-834,232	1,232,303	817,414	n/a	n/a
Vista	4,662,310	8,889,000	7,425,969	59%	-16%
Unincorporated	21,453,536	29,566,719	36,861,206	72%	25%
Alpine	1,583,876	1,697,962	1,950,597	23%	15%
Fallbrook	2,011,018	3,465,165	3,064,576	52%	-12%
Ramona	842,234	1,472,675	1,103,441	31%	-25%
Valley Center	1,183,306	1,509,664	11,264,956	852%	646%
Other Unincorporated	15,833,102	21,421,253	19,477,636	23%	-9%
California Highway Patrol	449,626	562,281	384,985	-14%	-32%
California State University San Marcos	16,642	25,779	36,614	120%	42%
San Diego State University	789,186	926,063	1,522,051	93%	64%
University of California San Diego	632,295	864,206	1,315,760	108%	52%
San Diego Harbor Police	507,707	612,035	1,146,358	126%	87%
California State Parks and Recreation	106,602	190,336	161,619	52%	-15%
TOTAL	\$217,153,617	\$269,467,222	\$293,036,277	35%	9%

NOTES: Dollar amounts are not adjusted for inflation and reflect the reported dollar values associated with stolen items reported by individual jurisdictions. Minus dollar value in Solana Beach in 2002 due to adjustments involving a stolen jewelry case. Relics valued at ten million dollars were stolen from a mission in Valley Center in 2006.

SOURCE: SANDAG

Appendix Table 18
DOLLAR VALUE OF PROPERTY RECOVERED BY JURISDICTION
San Diego Region, 2002, 2005, and 2006

	2002	2005	2006	Change	
				2002-2006	2005-2006
Carlsbad	\$1,614,996	\$1,662,509	\$1,873,912	16%	13%
Chula Vista	9,608,969	12,025,919	12,194,691	27%	1%
Coronado	391,693	427,988	473,332	21%	11%
El Cajon	4,225,323	5,699,093	4,837,724	14%	-15%
Escondido	4,527,605	5,882,123	5,393,843	19%	-8%
La Mesa	2,025,927	2,779,914	3,119,583	54%	12%
National City	3,368,472	4,207,667	4,013,175	19%	-5%
Oceanside	5,076,987	3,951,505	3,722,034	-27%	-6%
San Diego	50,334,081	56,942,378	67,849,368	35%	19%
Sheriff - Total	14,527,295	18,271,249	19,551,821	35%	7%
Del Mar	165,810	329,498	314,508	90%	-5%
Encinitas	1,235,960	1,092,395	854,446	-31%	-22%
Imperial Beach	538,050	889,239	1,038,369	93%	17%
Lemon Grove	778,586	1,232,618	1,143,434	47%	-7%
Poway	637,002	609,913	869,393	36%	43%
San Marcos	729,730	1,395,888	1,430,319	96%	2%
Santee	694,393	792,750	950,177	37%	20%
Solana Beach	350,518	327,516	284,265	-19%	-13%
Vista	1,851,620	2,254,856	2,760,868	49%	22%
Unincorporated	7,545,626	9,346,576	9,906,042	31%	6%
Alpine	684,460	700,931	642,615	-6%	-8%
Fallbrook	542,840	998,491	865,933	60%	-13%
Ramona	288,356	356,562	459,632	59%	29%
Valley Center	396,386	424,250	517,988	31%	22%
Other Unincorporated	5,633,584	6,866,342	7,419,874	32%	8%
California Highway Patrol	250,722	142,630	78,700	-69%	-45%
California State University San Marcos	0	4,156	20,901	--	403%
San Diego State University	213,812	330,445	215,013	1%	-35%
University of California San Diego	261,602	147,373	363,537	39%	147%
San Diego Harbor Police	40,281	12,589	116,127	188%	822%
California State Parks and Recreation	29,917	58,195	19,330	-35%	-67%
TOTAL	\$96,497,682	\$112,545,733	\$123,843,091	28%	10%

NOTES: Dollar amounts are not adjusted for inflation and reflect the reported dollar values associated with recovered items reported by individual jurisdictions. There was no property recovered by the police at California State University San Marcos in 2002.

SOURCE: SANDAG

Appendix Table 19
PROPERTY RECOVERY RATE BY JURISDICTION
San Diego Region, 2002, 2005, and 2006

	2002	2005	2006	Difference	
				2002-2006	2005-2006
Carlsbad	27%	23%	31%	4%	8%
Chula Vista	50%	51%	46%	-4%	-5%
Coronado	36%	34%	30%	-6%	-4%
El Cajon	44%	49%	44%	0%	-5%
Escondido	50%	54%	54%	4%	0%
La Mesa	48%	48%	54%	6%	6%
National City	54%	53%	50%	-4%	-3%
Oceanside	50%	48%	46%	-4%	-2%
San Diego	45%	43%	46%	1%	3%
Sheriff - Total	39%	31%	31%	-8%	0%
Del Mar	28%	14%	29%	1%	15%
Encinitas	38%	26%	30%	-8%	4%
Imperial Beach	34%	42%	51%	17%	9%
Lemon Grove	48%	50%	56%	8%	6%
Poway	24%	42%	36%	12%	-6%
San Marcos	146%	41%	40%	-106%	-1%
Santee	34%	29%	32%	-2%	3%
Solana Beach	-42%	27%	35%	77%	8%
Vista	40%	25%	37%	-3%	12%
Unincorporated	35%	32%	27%	-8%	-5%
Alpine	43%	41%	33%	-10%	-8%
Fallbrook	27%	29%	28%	1%	-1%
Ramona	34%	24%	42%	8%	18%
Valley Center	33%	28%	5%	-28%	-23%
Other Unincorporated	35%	32%	27%	-8%	-5%
California Highway Patrol	56%	25%	20%	-36%	-5%
California State University San Marcos	0%	16%	57%	--	41%
San Diego State University	27%	36%	14%	-13%	-22%
University of California San Diego	41%	17%	28%	-13%	11%
San Diego Harbor Police	8%	2%	10%	2%	8%
California State Parks and Recreation	28%	31%	12%	-16%	-19%
TOTAL	44%	42%	42%	-2%	0%

NOTE: There was no property recovered by the police at California State University San Marcos in 2002.

SOURCE: SANDAG

Appendix Table 20
POPULATION BY JURISDICTION
San Diego Region, 2002, 2005, and 2006

	2002	2005	2006	Change	
				2002-2006	2005-2006
Carlsbad	88,120	94,776	98,607	12%	4%
Chula Vista	191,033	216,694	223,423	17%	3%
Coronado	25,690	26,902	26,248	2%	-2%
El Cajon	96,578	97,331	96,867	<1%	<-1%
Escondido	137,130	140,803	140,766	3%	<-1%
La Mesa	55,671	55,766	55,724	<1%	<-1%
National City	57,853	63,569	63,537	10%	<-1%
Oceanside	167,334	174,404	174,925	5%	<1%
San Diego	1,256,981	1,300,343	1,311,162	4%	1%
Sheriff - Total	806,078	836,319	841,512	4%	1%
Del Mar	4,501	4,524	4,524	1%	0%
Encinitas	59,919	62,530	62,815	5%	<1%
Imperial Beach	27,550	27,604	27,563	<1%	<-1%
Lemon Grove	25,342	25,434	25,363	<1%	<-1%
Poway	49,684	50,477	50,542	2%	<1%
San Marcos	60,825	72,768	76,725	26%	5%
Santee	53,655	54,267	54,709	2%	1%
Solana Beach	13,287	13,347	13,327	<1%	<-1%
Vista	92,116	93,746	94,440	3%	1%
Unincorporated	419,199	431,622	431,504	3%	<-1%
Alpine	27,486	27,959	27,951	2%	<-1%
Fallbrook	48,305	50,783	50,769	5%	<-1%
Lakeside	52,286	52,291	51,751	-1%	-1%
Ramona	34,407	35,586	35,576	3%	<-1%
Spring Valley	69,096	70,055	69,764	1%	<-1%
Valley Center	21,918	21,751	21,740	-1%	<-1%
Other Unincorporated	165,701	173,197	173,953	5%	<1%
Camp Pendleton	37,542	32,370	34,049	-9%	5%
TOTAL	2,920,010	3,039,277	3,066,820	5%	1%
Occupied Households	1,017,385	1,061,021	1,067,846	5%	1%
Registered Vehicles	2,138,823	2,232,633	2,320,808	4%	4%
Female Population	1,458,773	1,518,581	1,531,155	5%	1%

NOTES: Population figures are based upon current California Department of Finance estimates. "Sheriff-Total" includes contract cities and the unincorporated area served by the San Diego County Sheriff's Department. Camp Pendleton is not included. "Unincorporated" includes Alpine, Campo, Fallbrook, Julian, Lakeside, Pine Valley, Ramona, Ranchita, Spring Valley, and Valley Center, as well as the unincorporated areas of Encinitas, Imperial Beach, Lemon Grove, San Marcos, Poway, Santee, and Vista. "Other Unincorporated" is equal to the unincorporated area of the Sheriff's jurisdiction minus Alpine, Fallbrook, Lakeside, Ramona, Spring Valley, and Valley Center.

SOURCES: California Department of Finance; SANDAG