

What is Infant Mortality?

- Infant mortality is defined as the death of a baby less than one year of age.
 - It is often used as an indicator of the health status of a nation and to compare the health of different populations.



Demographic Risk Factors

- **Age**

- Births to teenagers less than 16 years of age or to mothers aged 44 years and older have a higher risk of infant mortality.

- **Race/Ethnicity**

- African Americans, Native Americans /Alaska Natives, and Puerto Ricans have higher rates of infant mortality.

- **Marital Status**

- Marital status may be an indicator of social, emotional, and financial support.
- Mothers who are married had lower rates of infant mortality than single mothers.

- **Maternal Education**

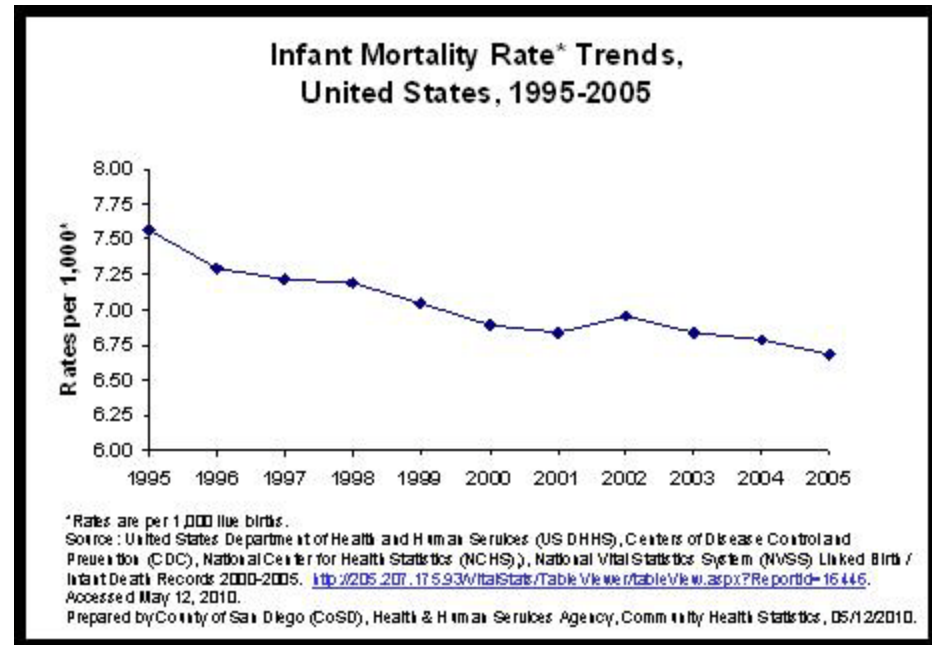


Social and Behavioral Risk Factors

- **Lack of Prenatal Care**
- **Poor Nutrition**
- **Alcohol and Drug Use**
- **Smoking During Pregnancy**
 - Mothers who smoke during pregnancy have nearly twice the risk of infant mortality than mothers who do not smoke during pregnancy.
- **Medical Complications**
 - Maternal complications of pregnancy or newborn complications may increase risk of mortality to infant.
- **Plural/Multiple Births**
 - The risk of infant death increases with multiple births.
- **Low Birthweight**
 - Birthweight is an important predictor of an infants health and survival.

National Statistics

- In 2006, there were 28,527 infant deaths in the United States.
- Nationally, the infant mortality rate for 2006 was 6.68 deaths per 1,000 live births.
- Since 2000, infant mortality rates have declined slightly, from 6.89 deaths per 1,000 live births to 6.68 deaths per 1,000 live births.

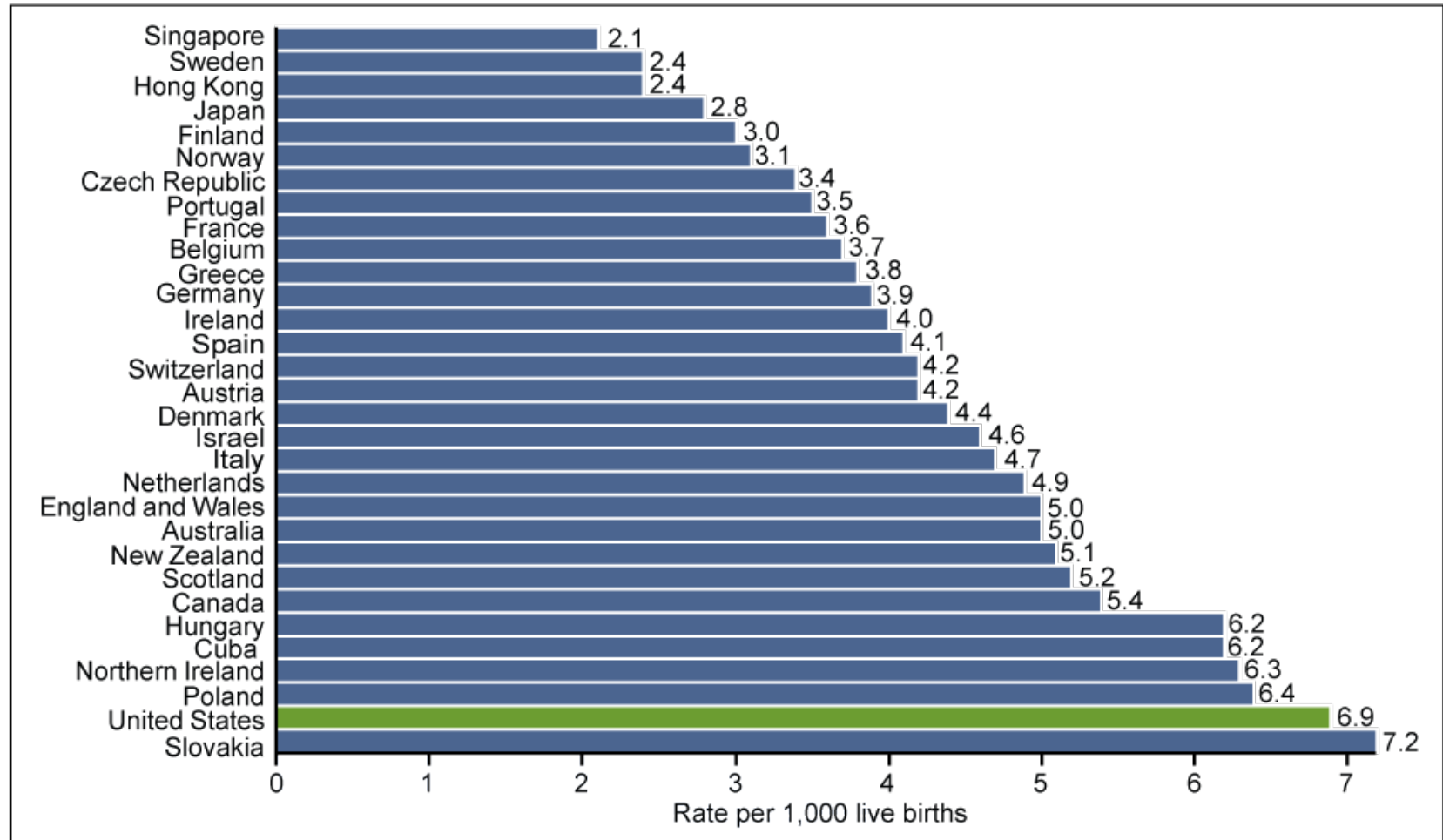


National Statistics and Disparities

- Infant death rates are significantly higher than the U.S. average in the South-Eastern region of the United States and significantly lower than the U.S. average in the Western Region.
- In 2005, the infant mortality rate among African Americans was the highest at 13.63 deaths per 1,000 live births, whereas among Asian Americans, the rate was the lowest at 4.89 deaths per 1,000 births.

National Statistics and Disparities

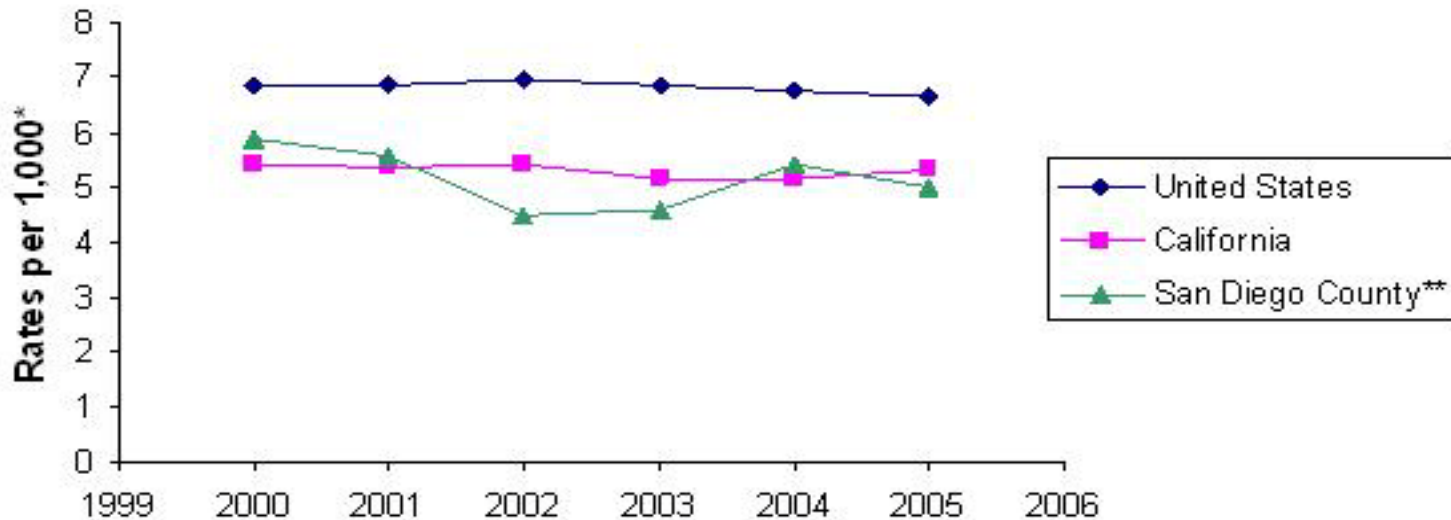
Figure 1. Infant mortality rates, selected countries, 2005



SOURCE: *Health, United States, 2008.*

Local Statistics

National, State, and Local Infant Mortality Rates*, 2000-2005



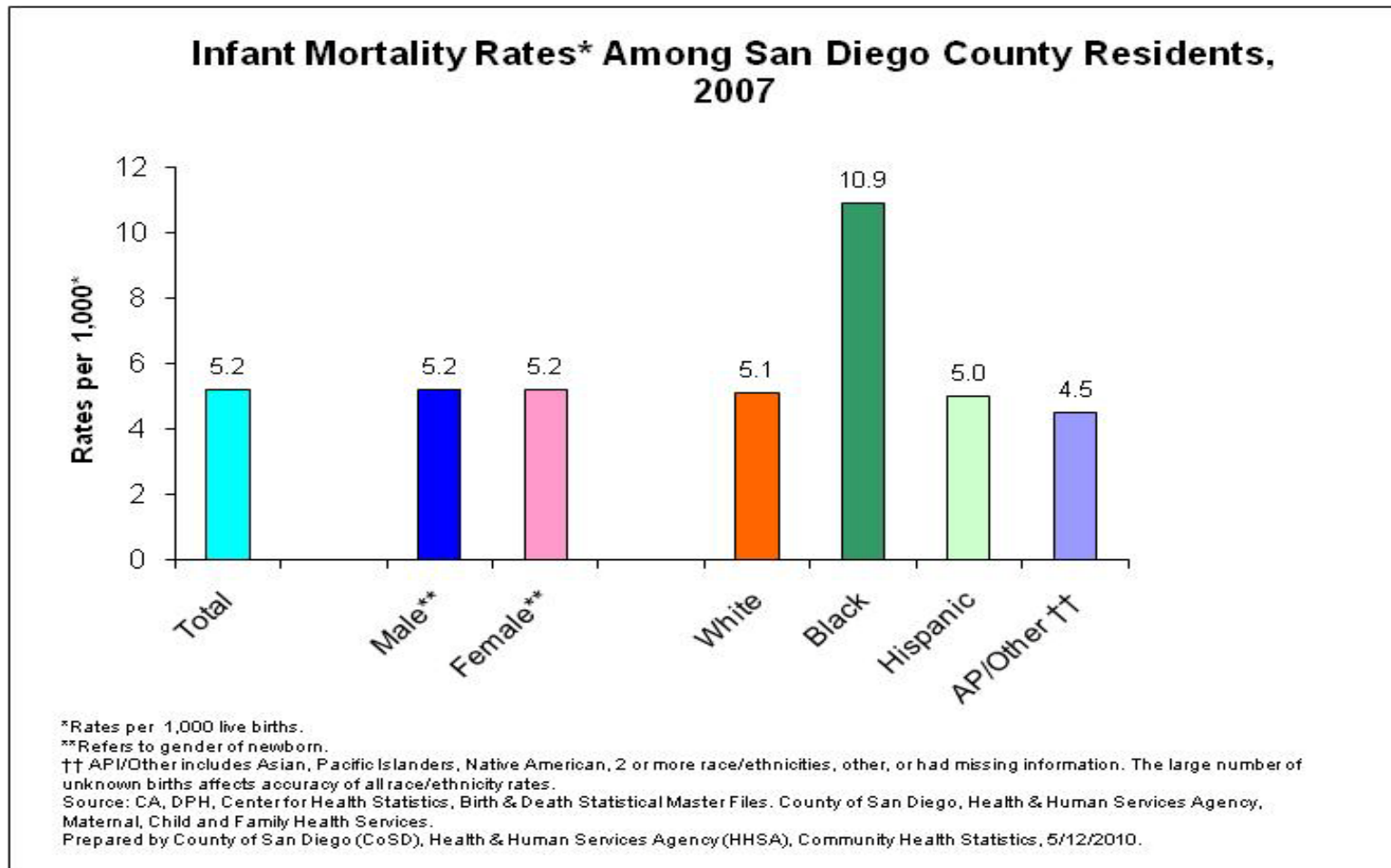
*Rates are per 1,000 live births.

Source: United States Department of Health and Human Services (US DHHS), Centers for Disease Control and Prevention (CDC), National Center for Health Statistics (NCHS), National Vital Statistics System (NVSS) Linked Birth/Infant Death Records 2000-2005. Accessed May 12, 2010.

**Source: CA, DPH, Center for Health Statistics, Birth & Death Statistical Master Files. County of San Diego, Health & Human Services Agency, Maternal, Child and Family Health Services.

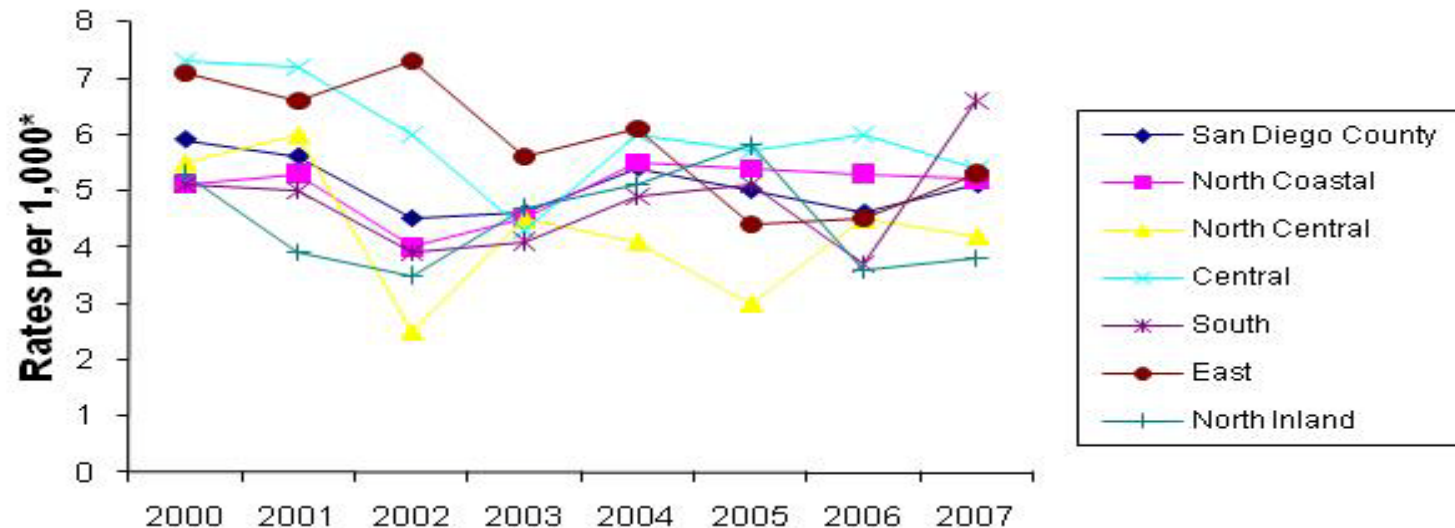
Prepared by County of San Diego (CoSD), Health & Human Services Agency, Community Health Statistics, 05/12/2010.

Local Statistics and Disparities



Local Statistics and Disparities

Infant Mortality Rates* Among San Diego County Residents, by Region, 2000-2007



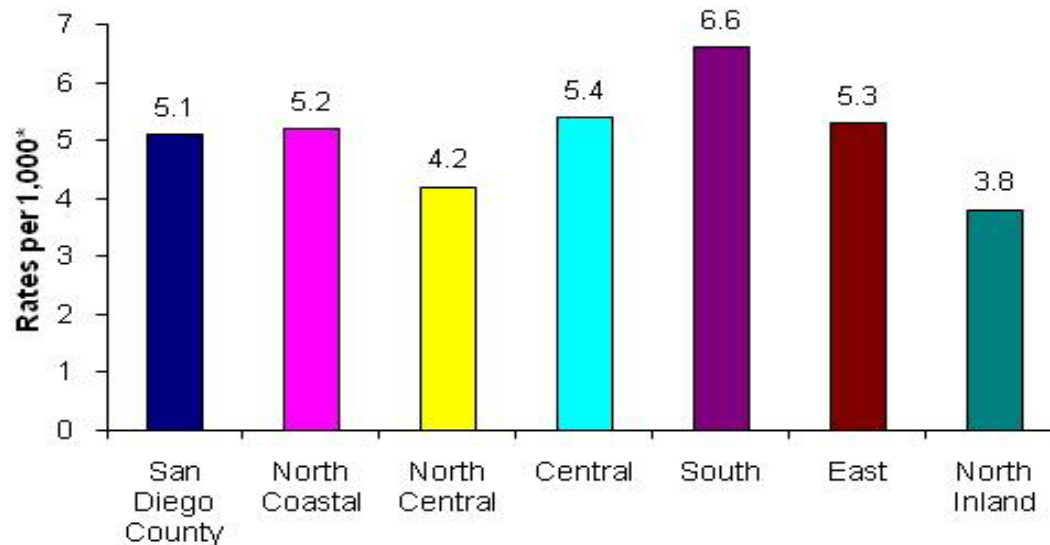
* Rates are number of deaths of infants under one year of age per 1,000 live births.

Source: CA, DPH, Center for Health Statistics, Birth & Death Statistical Master Files. County of San Diego, Health & Human Services Agency, Maternal, Child and Family Health Services.

Prepared by County of San Diego (CoSD), Health & Human Services Agency (HHSA), Community Health Statistics, 5/12/2010.

Local Statistics and Disparities

Infant Mortality Rates* Among San Diego County Residents by Region, 2007



*Rates are number of deaths of infants under one year of age per 1,000 live births.

Source: CA. DPH, Center for Health Statistics, Birth & Death Statistical Mater Files. County of San Diego, Health and Human Services Agency, Maternal, Child and Family Health Services.

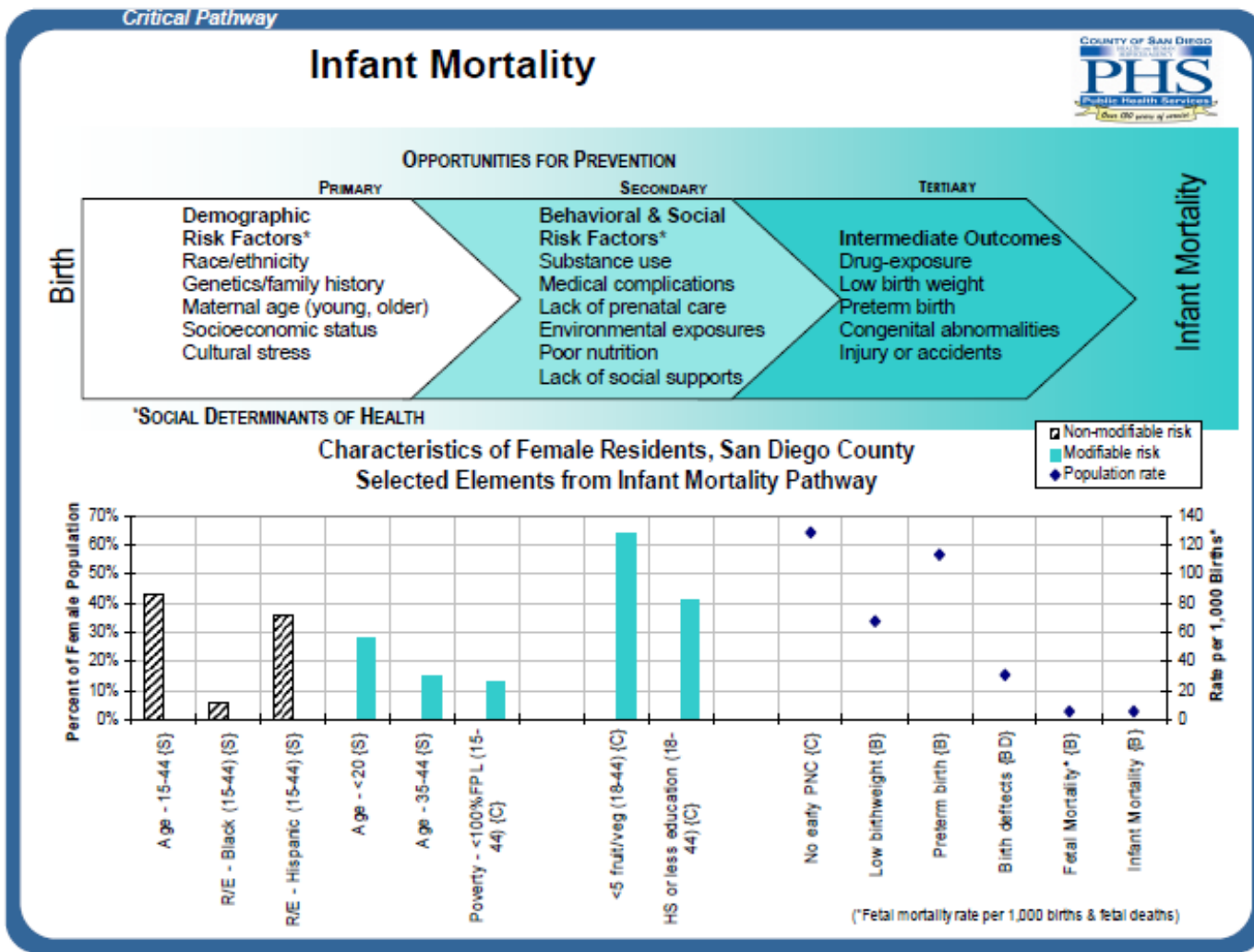
Prepared by County of San Diego (CoSD), Health & Human Services Agency (HHSA), Community Health Statistics, 05/21/2010.

Prevention

- Avoid smoking during pregnancy
- Do not use alcohol or drugs during pregnancy
- Seek prenatal care
- Maintain a healthy diet during pregnancy
 - Lack of a healthy diet can impair the development of the baby.
- Always place sleeping infants on their backs
 - Infants who sleep on their side or stomach have an increased risk for SIDS.



Critical Pathway to Infant Mortality



04/09

County of San Diego ■ Health and Human Services Agency ■ Public Health Services ■ Community Health Statistics Unit ■ www.SDHealthStatistics.com ■ (619)285-6479

Contact Us

County of San Diego
Health and Human Services Agency
Public Health Services
Community Health Statistics
(619)285-6479

www.SDHealthStatistics.com