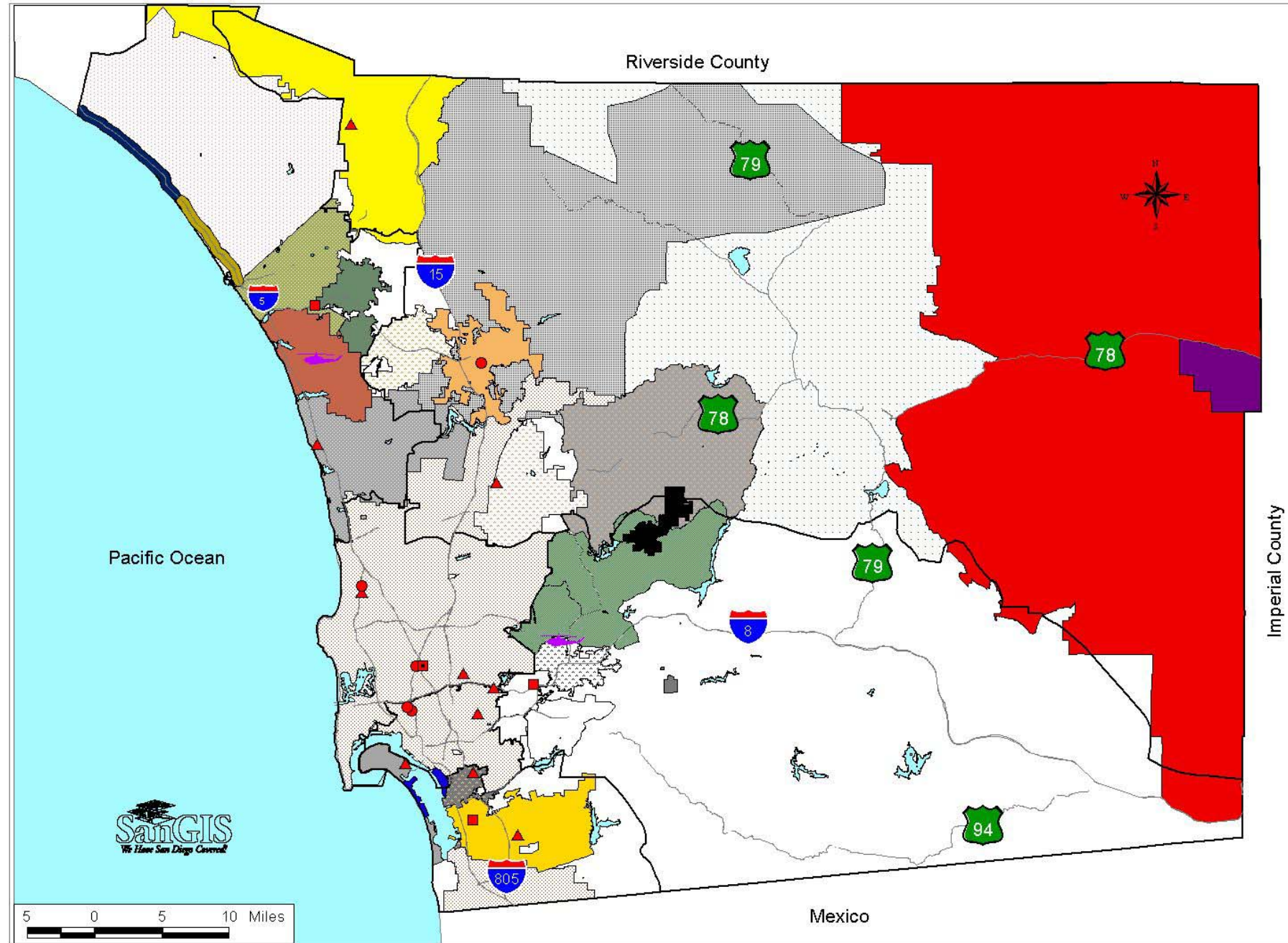


# San Diego County By Health Services Regions With Ambulance Service Areas and Hospital Facilities



## Ambulance Service Areas

(\* = Advanced Life Support Providers)

- Desert Region\* (Borrego Springs Fire Department)
- Desert Region\* (West Shore Ambulance)
- Ramona Municipal Water District\* (CDF & Fire Protection)
- North County Fire Protection District\*
- Julian-Cuyamaca Fire Protection District\*
- North County Rural Area (Sycuan)
- City of Escondido\*
- City of Poway\*
- City of San Marcos\* (AMR, San Marcos)
- US Navy Ambulance (Camp Pendleton)
- City of Oceanside\*
- City of Carlsbad\*
- City of Vista\*
- I-5 Corridor (Las Pulgas South-AMR, Balboa, CARE, Americare)
- I-5 Corridor\* (Las Pulgas North-Orange County Fire)
- CSA 17\* (SDMSE)
- CSA 69\* (Lakeside, Santee)
- City of El Cajon\*
- Sycuan Indian Reservation\*
- Barona Indian Reservation\*
- Grossmont Hospital District\* (AMR)
- City of Chula Vista\* (AMR)
- City of Coronado\*
- City of National City\* (AMR)
- City of San Diego\*
- US Navy\* (Federal Fire Department)
- Mercy Air\* (Base)

## Hospital Facilities

- Emergency Department**  
 Alvarado Hospital and Medical Center  
 Kaiser Hospital  
 University Community Medical Center  
 Sharp Coronado Hospital  
 Sharp Chula Vista Medical Center  
 Scripps Memorial Hospital - Encinitas  
 Fallbrook Hospital  
 Paradise Valley Hospital  
 Pomerado Hospital  
 UCSD - Thornton Hospital
- Trauma Center/Base Hospital Emergency Department**  
 Scripps Mercy Hospital  
 Sharp Memorial Hospital  
 UCSD Medical Center  
 Palomar Medical Center  
 Scripps Memorial Hospital La Jolla
- Base Hospital Emergency Department**  
 Scripps Memorial Hospital - Chula Vista  
 Sharp Grossmont Hospital  
 Tri-City Medical Center
- Trauma Center Emergency Department**  
 Children's Hospital and Health Center

THIS MAP IS PROVIDED WITHOUT WARRANTY OF ANY KIND, EITHER EXPRESS OR IMPLIED, INCLUDING BUT NOT LIMITED TO, THE WARRANTIES OF MERCHANTABILITY AND FITNESS FOR A PARTICULAR PURPOSE. Copyright SanGIS. All Rights Reserved.

This product may contain information from the SANDAG Regional Information System which cannot be reproduced without the written permission of SANDAG.

This product may contain information which has been reproduced with permission granted by Thomas Brothers Maps.

Source: County of San Diego Health and Human Services Agency, Division of Emergency Medical Services, February 2003.