



# Arrests 2004: Law Enforcement Response to Crime in the San Diego Region

November 2005

Cynthia Burke, Ph.D.

Sandy Keaton

Donna Allnutt



401 B Street  
Suite 800  
San Diego, CA 92101  
(619) 699-1900

# BOARD OF DIRECTORS



The 18 cities and county government are SANDAG serving as the forum for regional decision-making. SANDAG builds consensus; plans, engineers, and builds public transit; makes strategic plans; obtains and allocates resources; and provides information on a broad range of topics pertinent to the region's quality of life.

**CHAIR:** Hon. Mickey Cafagna

**FIRST VICE CHAIR:** Hon. Mary Teresa Sessom

**SECOND VICE CHAIR:** Hon. Jack Dale

**EXECUTIVE DIRECTOR:** Gary L. Gallegos

**CITY OF CARLSBAD**

Hon. Matt Hall, Mayor Pro Tem  
(A) Hon. Bud Lewis, Mayor  
(A) Hon. Ann Kulchin, Councilmember

**CITY OF CHULA VISTA**

Hon. Steve Padilla, Mayor  
(A) Hon. Patty Davis, Deputy Mayor  
(A) Hon. Jerry Rindone, Councilmember

**CITY OF CORONADO**

Hon. Phil Monroe, Councilmember  
(A) Hon. Frank Tierney, Councilmember  
(A) Hon. Carrie Downey, Councilmember

**CITY OF DEL MAR**

Hon. Crystal Crawford, Deputy Mayor  
(A) Hon. David Druker, Councilmember  
(A) Hon. Henry Abarbanel, Councilmember

**CITY OF EL CAJON**

Hon. Mark Lewis, Mayor  
(A) Hon. Jillian Hanson-Cox, Councilmember

**CITY OF ENCINITAS**

Hon. Christy Guerin, Deputy Mayor  
(A) Hon. Jerome Stocks, Councilmember

**CITY OF ESCONDIDO**

Hon. Lori Holt Pfeiler, Mayor  
(A) Hon. Ed Gallo, Mayor Pro Tem  
(A) Hon. Ron Newman, Councilmember

**CITY OF IMPERIAL BEACH**

Hon. Patricia McCoy, Councilmember  
(A) Hon. Diane Rose, Mayor  
(A) Hon. Mayda Winter, Councilmember

**CITY OF LA MESA**

Hon. Art Madrid, Mayor  
(A) Hon. Barry Jantz, Councilmember  
(A) Hon. David Allan, Vice Mayor

**CITY OF LEMON GROVE**

Hon. Mary Teresa Sessom, Mayor  
(A) Hon. Jerry Jones, Councilmember  
(A) Hon. Jerry Selby, Councilmember

**CITY OF NATIONAL CITY**

Hon. Ron Morrison, Vice Mayor  
(A) Hon. Frank Parra, Councilmember  
(A) Hon. Louie Natividad, Councilmember

**CITY OF OCEANSIDE**

Hon. Jim Wood, Mayor  
(A) Hon. Esther Sanchez, Deputy Mayor

**CITY OF POWAY**

Hon. Mickey Cafagna, Mayor  
(A) Hon. Don Higginson, Councilmember  
(A) Hon. Robert Emery, Deputy Mayor

**CITY OF SAN DIEGO**

Hon. Jim Madaffer, Mayor Pro Tem  
Hon. Scott Peters, Councilmember  
(A) Vacant

**CITY OF SAN MARCOS**

Hon. Pia Harris-Ebert, Vice Mayor  
(A) Hon. Hal Martin, Councilmember  
(A) Hon. Corky Smith, Mayor

**CITY OF SANTEE**

Hon. Jack Dale, Councilmember  
(A) Hon. Hal Ryan, Councilmember  
(A) Hon. Randy Voepel, Mayor

**CITY OF SOLANA BEACH**

Hon. Joe Kellejian, Councilmember  
(A) Hon. David Powell, Deputy Mayor  
(A) Hon. Lesa Heebner, Councilmember

**CITY OF VISTA**

Hon. Morris Vance, Mayor  
(A) Hon. Judy Ritter, Councilmember  
(A) Hon. Bob Campbell, Mayor Pro Tem

**COUNTY OF SAN DIEGO**

Hon. Pam Slater-Price, Chairwoman  
(A) Hon. Dianne Jacob, Supervisor

**IMPERIAL COUNTY**

(Advisory Member)  
Hon. Victor Carrillo, Supervisor  
(A) Hon. David Ouzan, Mayor

**CALIFORNIA DEPARTMENT OF TRANSPORTATION**

(Advisory Member)  
Will Kempton, Director  
(A) Pedro Orso-Delgado, District 11 Director

**METROPOLITAN TRANSIT SYSTEM**

(Advisory Member)  
Leon Williams, Chairman  
(A) Hon. Jerry Rindone, Vice Chairman  
(A) Hon. Bob Emery, Board Member

**NORTH COUNTY TRANSIT DISTRICT**

(Advisory Member)  
Hon. Jerome Stocks, Councilmember  
(A) Hon. Judy Ritter, Councilmember  
(A) Hon. Ed Gallo, Mayor Pro Tem

**U.S. DEPARTMENT OF DEFENSE**

(Advisory Member)  
CAPT Daniel King, USN, CEC  
Commander, Southwest Division  
Naval Facilities Engineering Command  
(A) CAPT Richard Gamble, USN, CEC

**SAN DIEGO UNIFIED PORT DISTRICT**

(Advisory Member)  
William Hall, Commissioner  
(A) Michael Bixler, Commissioner

**SAN DIEGO COUNTY WATER AUTHORITY**

(Advisory Member)  
Marilyn Dailey, Commissioner  
(A) Mark Muir, Commissioner

**MEXICO**

(Advisory Member)  
Hon. Luis Cabrera C.  
Consulate General of Mexico

# ARRESTS 2004: LAW ENFORCEMENT RESPONSE TO CRIME IN THE SAN DIEGO REGION

---

## INTRODUCTION

The Criminal Justice Research Division of the San Diego Association of Governments (SANDAG) functions as the Clearinghouse for criminal justice information for the region. On an annual basis, the Division prepares a report on local criminal justice agencies' response to crime in the region. Such information provides an added dimension to our bi-annual reports on crime statistics for understanding the nature of crime and an additional measure that can be used in justice system planning.

This CJ Bulletin includes regional arrest rates per 1,000 adult and juvenile populations, as well as numbers of arrests by offense type. In addition, 42 supplemental tables, which include statistics by individual jurisdictions and populations used to compute rates, are also presented.

Some points to remember when interpreting these numbers include:

- Similar to how the FBI counts reported crimes, the offense or charge attributed to an arrest may reflect only the most serious out of a number of violations included in the case.
- Arrests are documented by the location at which the arrest occurred and cannot be assumed to have any relationship to the location of the residence of the alleged offender.
- Arrest and crime rates and numbers should not be compared to one another. One reason is that the two events may occur in two entirely different periods of time, with an arrest made months or even

years after the related crime has been reported.

## FAST FACTS

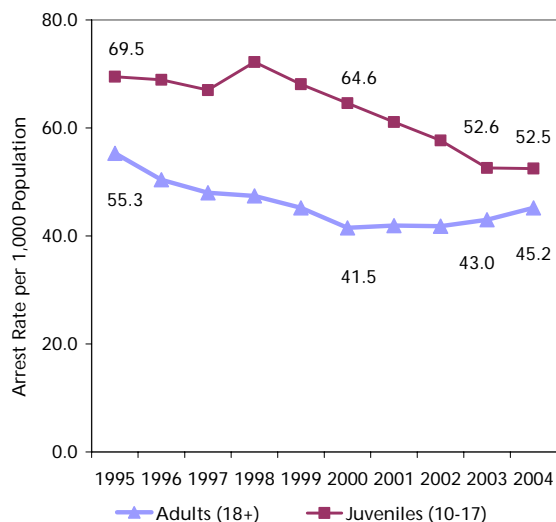
- The adult arrest rate increased for a fourth consecutive year, most recently from 43.0 in 2003 to 45.2 in 2004.
- The juvenile arrest rate has declined all nine years since 1995, but the change from 2003 to 2004 was the smallest decrease (52.6 to 52.5) during this time.
- Compared to other large California counties, San Diego had the second highest adult and juvenile arrest rates in 2004.
- On average, there were 279 adult arrests and 50 juvenile arrests made by local law enforcement agencies each day in 2004.
- While juveniles comprised just 15 percent of all regional arrests in 2004, they represented 35 percent of arrests for weapons-related offenses.
- Around half (51%) of all adult arrests were for an alcohol- or drug-related offense.
- Arrests for property offenses increased more than any other type between 2003 and 2004 for adults (14%) and rose 10 percent for juveniles.
- Since 2000, the number of adult and juvenile arrests for weapons-related offenses increased more than any other category (42% and 33%, respectively).
- The number of juveniles arrested for a status offense has declined 35 percent over the past five years.

## ARREST RATE TRENDS, 1995-2004

In 2004, there were 45.2 adults arrested per 1,000 population, as Figure 1 shows. This was the fourth consecutive year the adult arrest rate increased since 2000, when the rate was at a ten-year low of 41.5. Compared to 2003, the 2004 adult arrest rate increased five percent (from 43.0).

The arrest rate for juveniles has shown a somewhat different pattern (Figure 1). With one exception (1997-1998), the juvenile rate has declined each year since 1995. However, the 2004 rate of 52.5 per 1,000 population was only slightly lower than the rate in 2003 (52.6), representing the smallest change from one year to the next during the ten-year period.

**Figure 1  
DECLINE IN JUVENILE ARREST RATES  
SLOWED IN 2004**



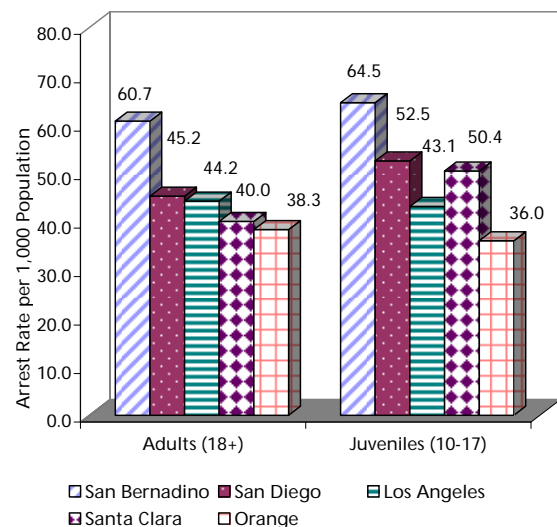
SOURCES: California Department of Justice; California Department of Finance; SANDAG

## SAN DIEGO COMPARED TO OTHER CALIFORNIA COUNTIES

In 2004, San Diego County had the second highest adult and juvenile arrest rates, compared to the other four most populated counties in the State: Los Angeles,

San Bernardino, Orange, and Santa Clara (Figure 2). Compared to five years ago, San Diego had the greatest increase in the adult arrest rate (9%) compared to the other four counties (range 9% decrease to 5% increase) and the third greatest decrease in the juvenile arrest rate (19%), following Orange County (26%) and Santa Clara County (21%) (not shown).

**Figure 2  
SAN DIEGO COUNTY HAS SECOND  
HIGHEST ADULT AND JUVENILE ARREST  
RATES**

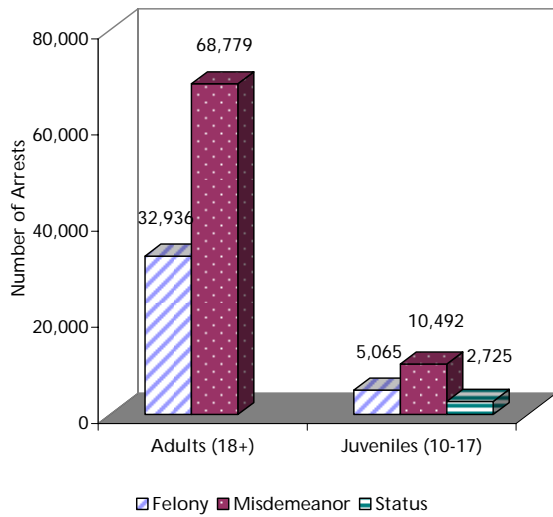


SOURCES: California Department of Justice; California Department of Finance; SANDAG

## NUMBER OF ADULT AND JUVENILE ARRESTS

Even though juveniles have historically had a higher arrest rate compared to adults, it is important to note that many more adults are actually arrested. In 2004, there were 101,715 adult arrests and 18,282 juvenile arrests, with the majority of these at the misdemeanor level (Figure 3). In other words, on average, there were about 279 adults and 50 juveniles arrested every day in the San Diego region by local law enforcement agencies in 2004 (not shown).

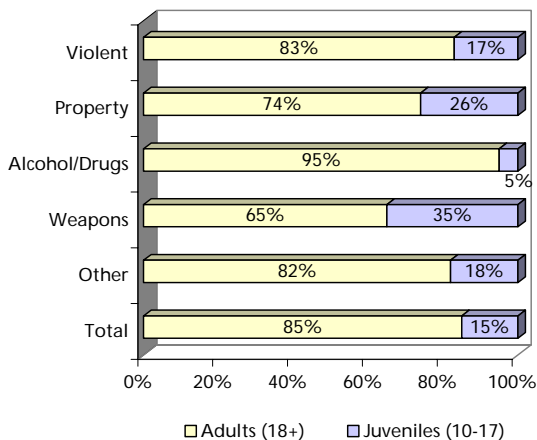
**Figure 3  
MOST ARRESTS ARE OF ADULTS FOR  
MISDEMEANOR OFFENSES**



SOURCES: California Department of Justice, SANDAG

As Figure 4 shows, while 15 percent of all individuals arrested in 2004 were juveniles, there was variation by crime type, with juveniles more likely to be arrested for weapons offenses (35%) and property offenses (26%), and less likely to be arrested for alcohol- and other drug-related offenses (5%).

**Figure 4  
JUVENILE ARRESTS ARE  
PROPORTIONATELY HIGHER FOR  
WEAPONS OFFENSES**

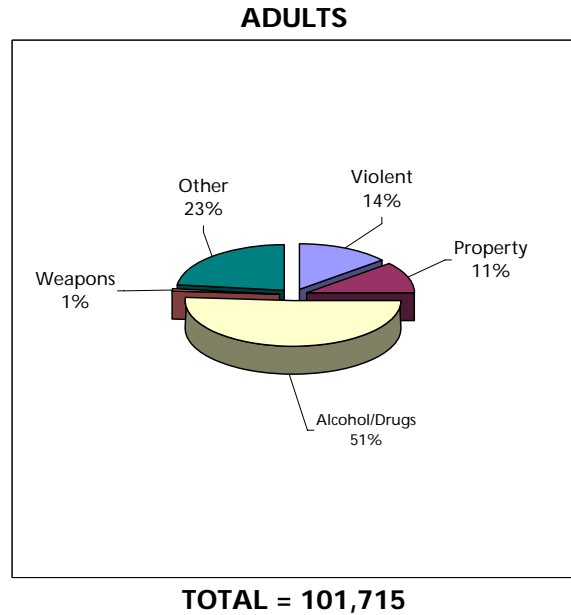


SOURCES: California Department of Justice, SANDAG

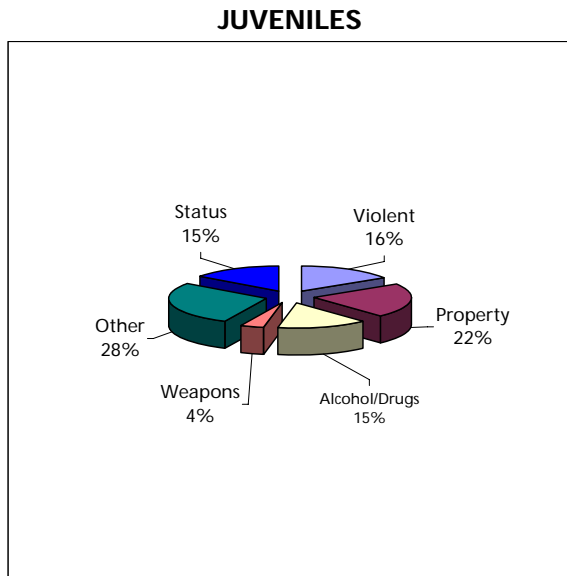
**ARRESTS BY OFFENSE TYPE**

As Figure 5 shows, around half (51%) of adult arrests were for alcohol- or other drug-related violations. In comparison, juveniles were most likely to be arrested for an "other" (28%) or property-related offense (22%), and just 15 percent of juvenile arrests were for alcohol- or other drug-related offenses (Figure 6).

**Figure 5  
ADULTS MORE LIKELY THAN JUVENILES  
TO BE ARRESTED FOR ALCOHOL- AND  
OTHER DRUG-RELATED OFFENSES**



**Figure 6  
ADULTS MORE LIKELY THAN JUVENILES  
TO BE ARRESTED FOR ALCOHOL- AND  
OTHER DRUG-RELATED OFFENSES**

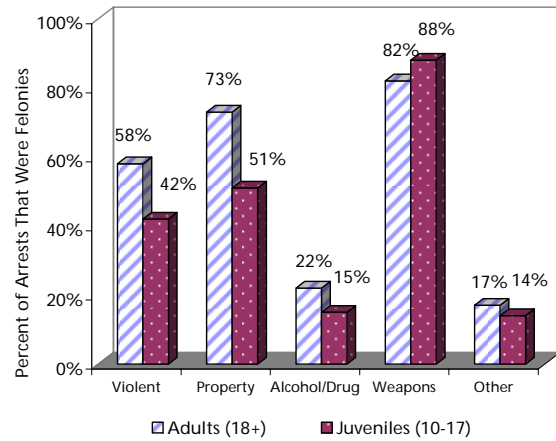


**TOTAL = 18,282**

SOURCES: California Department of Justice; SANDAG

There was also variation across the arrest categories in what percent of arrests represented felony versus misdemeanor level offenses. As Figure 7 shows, while more than three-quarters of juvenile and adult arrests for weapons offenses were at the felony level, a much smaller percent of the alcohol/drug and other offense arrests were at the felony level. In addition, adults were considerably more likely than juveniles to be arrested for a felony for both the violent and property offense categories.

**Figure 7  
MOST ARRESTS FOR WEAPONS OFFENSES  
AT THE FELONY LEVEL**

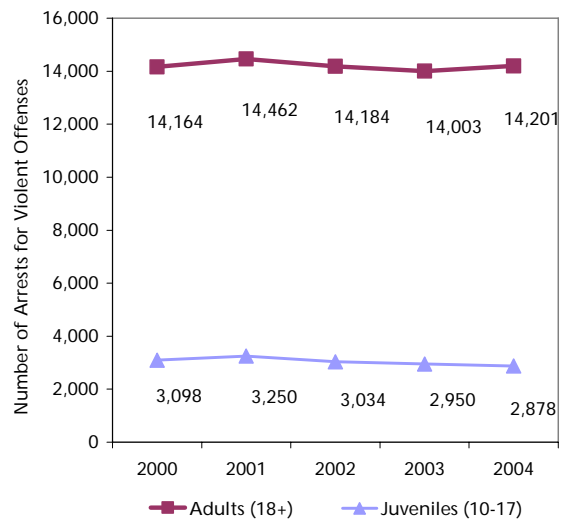


SOURCES: California Department of Justice; SANDAG

### Violent Offenses

There were 14,201 adults and 2,878 juveniles arrested for violent offenses in 2004 (Figure 8). These numbers represented a one percent increase and a two percent decrease, respectively, from 2003.

**Figure 8  
NUMBER OF ARRESTS FOR VIOLENT  
OFFENSES RELATIVELY STABLE OVER PAST  
FIVE YEARS**



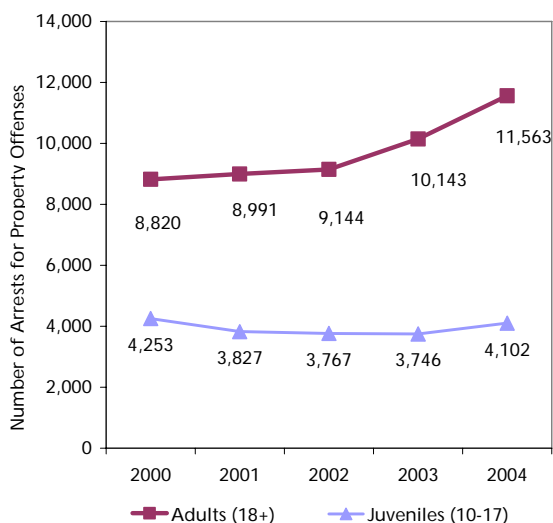
SOURCES: California Department of Justice; SANDAG

The violent offense category of arrests includes four felony-level offenses (homicide, rape, robbery, and aggravated assault) and two misdemeanor offenses (manslaughter and assault/battery). The most notable changes over the past year were a 20 percent decrease in adult arrests for rape and a 12 percent drop for homicide offenses (while robbery and misdemeanor-level violent offense arrests increased six percent and five percent, respectively) (Tables 22 and 35).

## Property Offenses

From 2003 to 2004, the number of adult and juvenile arrests for property offenses increased 14 percent and 10 percent, respectively, which was more than the other offense categories with the exception of juvenile weapons violations (also up 10% over one year). Property offenses include burglary, larceny, and motor vehicle theft at the felony level, and misdemeanor burglary and petty theft. In 2004, there were 11,563 adults and 4,102 juveniles arrested for a property offense (Figure 9).

**Figure 9**  
**ARRESTS FOR PROPERTY OFFENSES UP FOR BOTH ADULTS AND JUVENILES**



SOURCES: California Department of Justice; SANDAG

For adults, felony larceny theft arrests increased to the greatest degree (20%) over

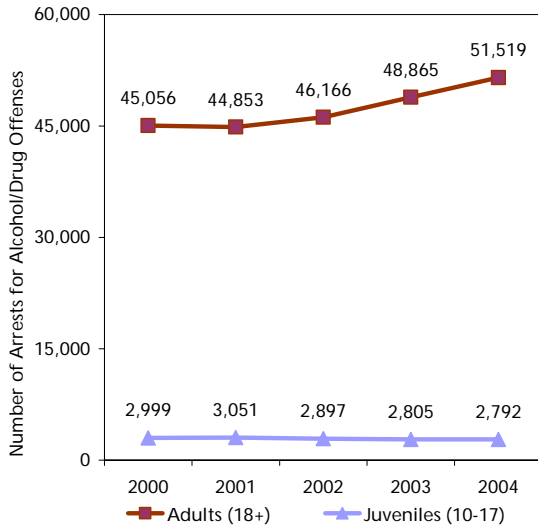
the one-year period, followed by misdemeanor burglary and petty theft (16%) (Table 23). In comparison, the number of juveniles arrested for misdemeanor petty theft and burglary also increased (16%), but the number of arrests for felony larceny theft actually decreased (6%) (Table 36).

## Alcohol- and Other Drug-Related Offenses

In 2004, there were 51,519 adult and 2,792 juvenile arrests for an alcohol- and other drug-related offense (Figure 10). This equates to more than six arrests every hour of every day (not shown). For adults, the number of arrests increased from one year earlier (5%), while the number decreased slightly (<1%) for juveniles.

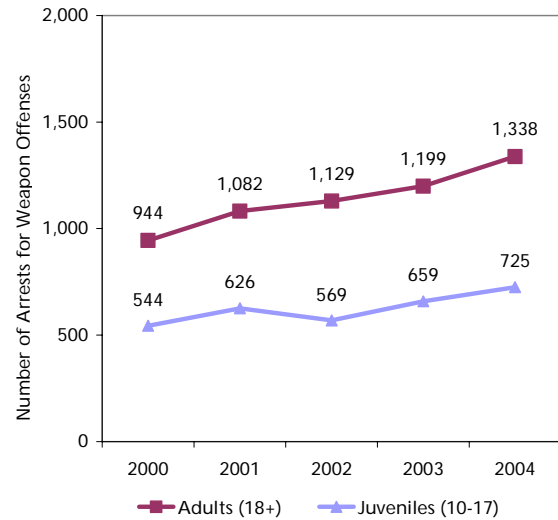
Comparing 2000 to 2004, the most notable change for juveniles was that the only alcohol/drug arrest type to increase considerably in number (by 14%) was dangerous drugs, which includes methamphetamine, depressants, and hallucinogens (Table 37). In comparison, there was also a substantial increase in this arrest type for adults (28%), but the greatest five-year change in terms of adult alcohol/drug arrests was from driving under the influence, which increased 35 percent (Table 24).

**Figure 10  
ADULT ARRESTS FOR ALCOHOL- AND  
OTHER DRUG-RELATED OFFENSES UP  
FROM 2003**



SOURCES: California Department of Justice; SANDAG

**Figure 11  
ARRESTS FOR WEAPONS OFFENSES UP  
OVER PAST FIVE YEARS FOR ADULTS AND  
JUVENILES**



SOURCES: California Department of Justice; SANDAG

## Weapons Violations

There were 1,338 adult arrests and 725 juvenile arrests for weapons violations in 2004 (Figure 11). Over the past five years, adult and juvenile arrests for weapons offenses have increased more than any other category of offense (by 42% and 33%, respectively). Compared to 2003, these numbers increased 12 percent for adults and 10 percent for juveniles.

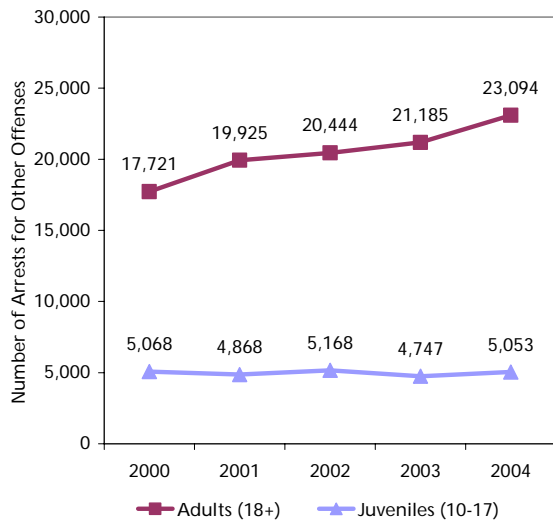
For adults, the number of misdemeanor arrests for weapons violations showed a greater one-year increase than at the felony level (22% versus 10%), while for juveniles, both felony- and misdemeanor-level arrests in this category increased at approximately the same rate (10% and 9%, respectively) (Tables 25 and 38).

## Other Offenses

In 2004, "other" offenses represented about one-quarter (23% of adult and 28% of juvenile) of all arrests (Figures 5 and 6). This equated to 23,094 adult arrests and 5,053 juvenile arrests in 2004, as well as increases of nine percent and six percent, respectively, from 2003 (Figure 12).



**Figure 12**  
**NUMBER OF ADULTS ARRESTED FOR OTHER OFFENSES HAS INCREASED IN PAST FIVE YEARS**



SOURCES: California Department of Justice; SANDAG

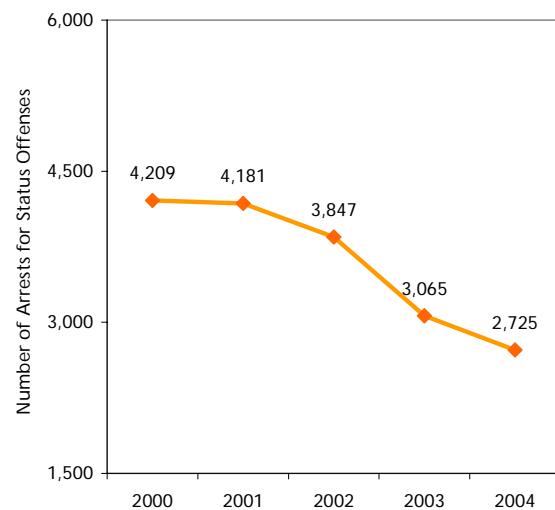
At the felony level, "other" charges include sex-related offenses, forgery, and arson, as well as other felonies (such as kidnapping). At the misdemeanor level, offense types include other theft-related charges, sex-related and prostitution, disturbing the peace, vandalism/graffiti, hit-and-run, selected traffic offenses, violations of city/county ordinances, failure to appear in court offenses, and other charges (such as contributing to the delinquency of a minor).

Notable increases over one-year for adults included a 35 percent rise in arrests for disturbing the peace and a 31 percent increase of misdemeanor arrests related to other types of theft, including checks and money access cards (Table 26). For juveniles, significant one-year changes at the misdemeanor level included a 53 percent increase in arrests for traffic offenses, a 51 percent increase for violations of city/county ordinances, and a 27 percent increase in arrests for prostitution (Table 39).

## Status Offenses

There were 2,725 status offense arrests in 2004, which represented a 35 percent five-year decrease and a one-year decline of 11 percent (Figure 13). Since 2000, over the past five years, the number of arrests for truancy and curfew violations decreased the most (51% and 47%, respectively), compared to changes in arrests for other status offenses (Table 40).

**Figure 13**  
**NUMBER OF STATUS OFFENSE ARRESTS HAS DECLINED OVER PAST FIVE YEARS**



SOURCES: California Department of Justice; SANDAG

**Table 1**  
**Total Arrest Rates by Jurisdiction**  
**2000, 2003, and 2004**

	2000	2003	2004	Change	
				2000-04	2003-04
Carlsbad	33.7	30.0	33.4	-1%	11%
Chula Vista	38.8	29.2	27.7	-29%	-5%
Coronado	18.0	18.2	19.2	7%	5%
El Cajon	54.2	59.1	60.3	11%	2%
Escondido	56.9	53.1	48.2	-15%	-9%
La Mesa	29.3	30.0	33.4	14%	11%
National City	51.8	40.2	50.8	-2%	26%
Oceanside	45.8	47.0	54.6	19%	16%
San Diego	48.9	50.3	52.3	7%	4%
Sheriff - Total	25.0	23.2	26.0	4%	12%
Del Mar	20.7	22.8	27.9	35%	22%
Encinitas	21.4	20.9	23.9	12%	14%
Imperial Beach	52.6	41.8	67.3	28%	61%
Lemon Grove	22.9	27.7	35.2	54%	27%
Poway	20.0	18.4	19.0	-5%	3%
San Marcos	32.2	23.7	25.6	-20%	8%
Santee	26.5	26.0	28.2	6%	8%
Solana Beach	15.5	13.0	19.1	23%	47%
Vista	27.5	26.3	31.1	13%	18%
Unincorporated	23.3	21.8	22.9	-2%	5%
<b>TOTAL</b>	<b>44.5</b>	<b>44.3</b>	<b>46.2</b>	<b>4%</b>	<b>4%</b>

*NOTES: Total includes felony, misdemeanor, and status offense arrests. The populations used to calculate arrest rates include individuals ten years and older (10-17 for juveniles and 18 and older for adults), based upon U.S. Census 2000 and current California Department of Finance updates.*

*SOURCES: California Department of Finance; U.S. Census 2000; California Department of Justice, Criminal Justice Statistics Center; SANDAG.*

**Table 2**  
**Total Arrest Rates by Age**  
**2000, 2003, and 2004**

	2000	2003	2004	Change	
				2000-04	2003-04
14 and Under	32.0	25.2	24.6	-23%	-2%
15-17	122.4	101.7	101.2	-17%	<-1%
18-24	81.9	93.4	97.8	19%	5%
25-29	57.7	59.0	64.1	11%	9%
30-39	54.4	50.6	52.2	-4%	3%
40 and Over	21.0	22.6	24.4	16%	8%
<b>TOTAL</b>	<b>44.5</b>	<b>44.3</b>	<b>46.2</b>	<b>4%</b>	<b>4%</b>

*NOTES: The populations used to calculate arrest rates include individuals ten years and older based upon U.S. Census 2000 and current California Department of Finance updates. Adult rates include felony and misdemeanor arrests; juvenile rates include felony, misdemeanor, and status arrests.*

*SOURCES: California Department of Finance; U.S. Census 2000; California Department of Justice, Criminal Justice Statistics Center; SANDAG.*

**Table 3**  
**Total Arrest Rates by Ethnicity**  
**2000, 2003, and 2004**

	2000	2003	2004	Change	
				2000-04	2003-04
<b>White</b>	<b>35.0</b>	<b>36.8</b>	<b>38.6</b>	<b>9%</b>	<b>5%</b>
Adult	34.0	36.4	38.7	15%	6%
Juvenile	53.0	40.4	38.3	-27%	-5%
<b>Black</b>	<b>134.0</b>	<b>133.4</b>	<b>146</b>	<b>9%</b>	<b>9%</b>
Adult	130.0	130.4	146	12%	12%
Juvenile	155.0	148.6	146.1	-5%	-2%
<b>Hispanic</b>	<b>57.0</b>	<b>54</b>	<b>55.1</b>	<b>-4%</b>	<b>2%</b>
Adult	54.0	52.9	53.6	-1%	1%
Juvenile	71.0	58.4	61.2	-14%	5%
<b>Other</b>	<b>23.0</b>	<b>21.1</b>	<b>20.6</b>	<b>-11%</b>	<b>-2%</b>
Adult	20.0	19.7	19.4	-3%	-2%
Juvenile	42.0	29.5	27.7	-34%	-6%
<b>Total</b>	<b>45.0</b>	<b>44.3</b>	<b>46.2</b>	<b>4%</b>	<b>4%</b>
Adult	42.0	43	45.2	9%	5%
Juvenile	65.0	52.6	52.5	-19%	<-1%

*NOTES: Total includes felony, misdemeanor, and status arrests. Adult rates include felony and misdemeanor arrests; juvenile rates include felony, misdemeanor, and status arrests. The populations used to calculate arrest rates include individuals ten years and older (10-17 for juveniles and 18 and older for adults), based upon U.S. Census 2000 and current California Department of Finance updates.*

*SOURCES: California Department of Finance; U.S. Census 2000; California Department of Justice, Criminal Justice Statistics Center; SANDAG*

**Table 4**  
**Felony Arrest Rates by Jurisdiction**  
**2000, 2003, and 2004**

	2000	2003	2004	Change	
				2000-04	2003-04
Carlsbad	9.6	9.4	11.4	19%	21%
Chula Vista	15.9	14.1	13.3	-16%	-6%
Coronado	4.6	5.5	4.6	<1%	-16%
El Cajon	18.1	21.2	21.0	16%	-1%
Escondido	17.6	18.0	17.4	-1%	-3%
La Mesa	10.5	13.5	12.7	21%	-6%
National City	22.7	18.3	21.9	-4%	20%
Oceanside	15.5	14.5	15.8	2%	9%
San Diego	14.3	15.5	15.9	11%	3%
Sheriff - Total	8.9	9.3	10.6	19%	14%
Del Mar	5.2	6.5	4.5	-13%	-31%
Encinitas	5.5	6.2	6.7	22%	8%
Imperial Beach	12.1	10.7	15.7	30%	47%
Lemon Grove	11.1	13.1	16.8	51%	28%
Poway	5.4	6.0	5.9	9%	-2%
San Marcos	9.7	9.0	9.1	-6%	1%
Santee	7.7	8.1	9.7	26%	20%
Solana Beach	3.8	3.0	6.3	66%	110%
Vista	10.4	11.3	13.3	28%	18%
Unincorporated	9.4	9.9	11.1	18%	12%
<b>TOTAL</b>	<b>13.3</b>	<b>14.0</b>	<b>14.6</b>	<b>10%</b>	<b>4%</b>

*NOTE: The populations used to calculate arrest rates include individuals ten years and older (10-17 for juveniles and 18 and older for adults) based upon U.S. Census 2000 and current California Department of Finance updates.*

*SOURCES: California Department of Finance; U.S. Census 2000; California Department of Justice, Criminal Justice Statistics Center; SANDAG.*

**Table 5**  
**Misdemeanor Arrest Rates by Jurisdiction**  
**2000, 2003, and 2004**

	2000	2003	2004	Change	
				2000-04	2003-04
Carlsbad	23.6	20.4	21.7	-8%	6%
Chula Vista	20.2	13.9	13.3	-34%	-4%
Coronado	12.5	12.7	14.6	17%	15%
El Cajon	34.3	36.6	37.8	10%	3%
Escondido	36.6	33.4	29.3	-20%	-12%
La Mesa	18.1	15.7	19.6	8%	25%
National City	27.9	20.9	28.0	<1%	34%
Oceanside	27.8	30.4	37.3	34%	23%
San Diego	32.6	33.4	35.2	8%	5%
Sheriff - Total	15.1	13.0	14.6	-3%	12%
Del Mar	15.5	16.0	23.1	49%	44%
Encinitas	15.0	14.4	16.7	11%	16%
Imperial Beach	38.8	28.6	50.0	29%	75%
Lemon Grove	10.8	13.5	17.0	57%	26%
Poway	13.0	11.6	12.8	-2%	10%
San Marcos	20.9	13.8	15.5	-26%	12%
Santee	17.3	16.4	17.5	1%	7%
Solana Beach	11.5	9.8	12.7	10%	30%
Vista	16.2	14.1	17.2	6%	22%
Unincorporated	12.9	11.2	11.0	-15%	-2%
<b>TOTAL</b>	<b>29.5</b>	<b>29.1</b>	<b>30.5</b>	<b>3%</b>	<b>5%</b>

*NOTE: The populations used to calculate arrest rates include individuals ten years and older (10-17 for juveniles and 18 and older for adults) based upon U.S. Census 2000 and current California Department of Finance updates.*

*SOURCES: California Department of Finance; U.S. Census 2000; California Department of Justice, Criminal Justice Statistics Center; SANDAG.*

**Table 6**  
**Total Arrest Rates, Adults and Juveniles**  
**Five California Counties and State of California**  
**2000, 2003, and 2004**

	2000	2003	2004	Change	
				2000-04	2003-04
<b>Los Angeles</b>					
Adult	42.0	42.2	44.2	5%	5%
Juvenile	49.9	43.6	43.1	-14%	-1%
Total	43.1	42.4	44.1	2%	4%
<b>Orange</b>					
Adult	41.3	39.5	38.3	-7%	-3%
Juvenile	48.5	38.4	36.0	-26%	-6%
Total	42.3	39.3	38.0	-10%	-3%
<b>San Bernardino</b>					
Adult	57.9	60.8	60.7	5%	<-1%
Juvenile	73.4	66.8	64.5	-12%	-3%
Total	60.6	61.8	61.3	1%	-1%
<b>San Diego</b>					
<b>Adult</b>	<b>41.5</b>	<b>43.0</b>	<b>45.2</b>	<b>9%</b>	<b>5%</b>
<b>Juvenile</b>	<b>64.6</b>	<b>52.6</b>	<b>52.5</b>	<b>-19%</b>	<b>&lt;-1%</b>
<b>Total</b>	<b>44.5</b>	<b>44.3</b>	<b>46.2</b>	<b>4%</b>	<b>4%</b>
<b>Santa Clara</b>					
Adult	43.9	40.8	40.0	-9%	-2%
Juvenile	63.9	57.5	50.4	-21%	-12%
Total	46.3	42.9	41.3	-11%	-4%
<b>Statewide</b>					
Adult	48.0	47.3	47.8	<-1%	1%
Juvenile	60.2	50.8	49.0	-19%	-4%
<b>TOTAL</b>	<b>49.7</b>	<b>47.8</b>	<b>48.0</b>	<b>-3%</b>	<b>&lt;1%</b>

*NOTES: Total includes felony, misdemeanor, and juvenile status offense arrests. Adult rates include felony and misdemeanor arrests; juvenile rates include felony, misdemeanor, and status arrests. The populations used to calculate arrest rates include individuals ten years and older (10-17 for juveniles and 18 and older for adults) based upon the U.S. Census 2000 and current California Department of Finance updates.*

*SOURCES: California Department of Finance; U.S. Census 2000; California Department of Justice, Criminal Justice Statistics Center; SANDAG.*

**Table 7**  
**Adult Arrest Rates by Jurisdiction**  
**2000, 2003, and 2004**

	2000	2003	2004	Change	
				2000-04	2003-04
Carlsbad	29.8	27.1	30.0	1%	11%
Chula Vista	32.7	26.3	24.1	-26%	-8%
Coronado	13.5	17.0	17.9	33%	5%
El Cajon	50.4	55.3	55.4	10%	<1%
Escondido	53.8	52.3	46.6	-13%	-11%
La Mesa	25.1	28.5	30.7	22%	8%
National City	50.5	37.7	48.8	-3%	29%
Oceanside	44.5	46.2	55.1	24%	19%
San Diego	44.6	48.1	51.1	15%	6%
Sheriff - Total	22.7	21.8	24.4	7%	12%
Del Mar	21.1	24.0	27.9	32%	16%
Encinitas	21.0	20.3	23.1	10%	14%
Imperial Beach	49.0	38.5	64.8	32%	68%
Lemon Grove	22.3	26.8	34.9	57%	30%
Poway	16.1	16.2	18.3	14%	13%
San Marcos	27.8	20.8	20.6	-26%	-1%
Santee	20.3	22.3	24.8	22%	11%
Solana Beach	16.2	13.1	19.1	18%	46%
Vista	26.4	25.4	30.2	14%	19%
Unincorporated	21.2	20.8	21.6	2%	4%
<b>TOTAL</b>	<b>41.5</b>	<b>43.0</b>	<b>45.2</b>	<b>9%</b>	<b>5%</b>

*NOTES: Total includes felony and misdemeanor arrests. The populations used to calculate adult arrest rates include individuals 18 years and older based upon 2000 U.S. Census data and current California Department of Finance updates.*

*SOURCES: California Department of Finance; U.S. Census 2000; California Department of Justice, Criminal Justice Statistics Center; SANDAG.*

**Table 8**  
**Adult Felony Arrest Rates by Jurisdiction**  
**2000, 2003, and 2004**

	2000	2003	2004	Change	
				2000-04	2003-04
Carlsbad	9.3	8.8	10.6	14%	20%
Chula Vista	15.2	14.0	12.6	-17%	-10%
Coronado	4.0	5.3	4.3	8%	-19%
El Cajon	17.9	20.9	20.9	17%	0%
Escondido	18.0	18.6	17.3	-4%	-7%
La Mesa	9.4	13.1	12.2	30%	-7%
National City	23.0	18.7	22.5	-2%	20%
Oceanside	15.9	14.2	15.8	-1%	11%
San Diego	13.8	15.2	16.1	17%	6%
Sheriff - Total	8.6	9.2	10.6	23%	15%
Del Mar	5.0	6.7	4.9	-2%	-27%
Encinitas	5.5	6.5	6.8	24%	5%
Imperial Beach	11.0	10.6	15.3	39%	44%
Lemon Grove	11.3	12.9	17.0	50%	32%
Poway	4.6	5.6	6.1	33%	9%
San Marcos	8.7	8.3	8.0	-8%	-4%
Santee	6.7	7.3	9.0	34%	23%
Solana Beach	3.9	2.8	6.3	62%	125%
Vista	10.2	11.2	13.3	30%	19%
Unincorporated	9.3	10.0	11.2	20%	12%
<b>TOTAL</b>	<b>13.0</b>	<b>13.9</b>	<b>14.6</b>	<b>12%</b>	<b>5%</b>

*NOTE: The populations used to calculate adult arrest rates include individuals 18 years and older based upon 2000 U.S. Census data and current California Department of Finance updates.*

*SOURCES: California Department of Finance; U.S. Census 2000; California Department of Justice, Criminal Justice Statistics Center; SANDAG.*



**Table 9**  
**Adult Misdemeanor Arrest Rates by Jurisdiction**  
**2000, 2003, and 2004**

	2000	2003	2004	Change	
				2000-04	2003-04
Carlsbad	9.3	8.8	10.6	14%	20%
Chula Vista	15.2	14.0	12.6	-17%	-10%
Coronado	4.0	5.3	4.3	8%	-19%
El Cajon	17.9	20.9	20.9	17%	0%
Escondido	18.0	18.6	17.3	-4%	-7%
La Mesa	9.4	13.1	12.2	30%	-7%
National City	23.0	18.7	22.5	-2%	20%
Oceanside	15.9	14.2	15.8	-1%	11%
San Diego	13.8	15.2	16.1	17%	6%
Sheriff - Total	8.6	9.2	10.6	23%	15%
Del Mar	5.0	6.7	4.9	-2%	-27%
Encinitas	5.5	6.5	6.8	24%	5%
Imperial Beach	11.0	10.6	15.3	39%	44%
Lemon Grove	11.3	12.9	17.0	50%	32%
Poway	4.6	5.6	6.1	33%	9%
San Marcos	8.7	8.3	8.0	-8%	-4%
Santee	6.7	7.3	9.0	34%	23%
Solana Beach	3.9	2.8	6.3	62%	125%
Vista	10.2	11.2	13.3	30%	19%
Unincorporated	9.3	10.0	11.2	20%	12%
<b>TOTAL</b>	<b>13.0</b>	<b>13.9</b>	<b>14.6</b>	<b>12%</b>	<b>5%</b>

*NOTE: The populations used to calculate adult arrest rates include individuals 18 years and older based upon 2000 U.S. Census data and current California Department of Finance updates.*

*SOURCES: California Department of Finance; U.S. Census 2000; California Department of Justice, Criminal Justice Statistics Center; SANDAG.*

**Table 10**  
**Juvenile Arrest Rates by Jurisdiction**  
**2000, 2003, and 2004**

	2000	2003	2004	Change	
				2000-04	2003-04
Carlsbad	63.5	50.0	57.6	-9%	15%
Chula Vista	73.4	45.1	47.8	-35%	6%
Coronado	69.3	32.2	34.1	-51%	6%
El Cajon	78.5	82.4	89.3	14%	8%
Escondido	75.8	57.2	57.2	-25%	<1%
La Mesa	68.8	43.6	57.4	-17%	32%
National City	59.2	53.8	61.3	4%	14%
Oceanside	53.6	51.6	51.7	-4%	<1%
San Diego	81.4	66.1	60.5	-26%	-8%
Sheriff - Total	38.6	31.4	35.4	-8%	13%
Del Mar	15.0	6.8	27.6	--	--
Encinitas	24.2	25.5	29.3	21%	15%
Imperial Beach	72.9	61.1	81.8	12%	34%
Lemon Grove	26.3	32.9	36.5	39%	11%
Poway	36.8	28.7	22.1	-40%	-23%
San Marcos	59.1	40.8	55.4	-6%	--
Santee	59.2	46.8	47.4	-20%	1%
Solana Beach	8.6	12.0	19.4	--	--
Vista	33.8	31.1	36.7	9%	18%
Unincorporated	35.5	27.8	30.6	-14%	10%
<b>TOTAL</b>	<b>64.6</b>	<b>52.6</b>	<b>52.5</b>	<b>-19%</b>	<b>0%</b>

*NOTES: Total includes felony, misdemeanor, and status offense arrests. The populations used to calculate juvenile arrest rates include individuals 10-17 years of age based upon 2000 U.S. Census data and current California Department of Finance updates. Percent changes are not presented if either comparison rate is based on 30 arrests or less.*

*SOURCES: California Department of Finance; U.S. Census 2000; California Department of Justice, Criminal Justice Statistics Center; SANDAG.*

**Table 11**  
**Juvenile Felony Arrest Rates by Jurisdiction**  
**2000, 2003, and 2004**

	2000	2003	2004	Change	
				2000-04	2003-04
Carlsbad	11.6	13.8	17.2	48%	25%
Chula Vista	19.5	14.8	17.7	-9%	20%
Coronado	11.8	8.3	8.3	--	--
El Cajon	19.4	23.0	21.7	12%	-6%
Escondido	14.8	14.4	17.5	18%	22%
La Mesa	20.4	17.1	17.1	-16%	0%
National City	21.1	16.0	19.1	-9%	19%
Oceanside	12.8	16.4	15.7	23%	-4%
San Diego	17.5	17.1	14.8	-15%	-13%
Sheriff - Total	10.9	9.9	11.0	1%	11%
Del Mar	7.5	3.4	--	--	--
Encinitas	6.1	4.3	5.9	-3%	--
Imperial Beach	18.6	11.7	18.4	-1%	57%
Lemon Grove	10.1	14.2	15.7	55%	11%
Poway	9.1	7.9	5.0	-45%	-37%
San Marcos	15.5	13.6	16.2	5%	19%
Santee	13.1	12.4	13.7	5%	10%
Solana Beach	2.9	4.3	6.8	--	--
Vista	11.3	12.2	13.6	20%	11%
Unincorporated	10.5	9.3	10.2	-3%	10%
<b>TOTAL</b>	<b>15.2</b>	<b>14.7</b>	<b>14.5</b>	<b>-5%</b>	<b>-1%</b>

*NOTES: The populations used to calculate juvenile arrest rates include individuals 10-17 years of age based upon 2000 U.S. Census data and current California Department of Finance updates. Percent changes are not presented if either comparison rate is based on 30 arrests or less.*

*SOURCES: California Department of Finance; U.S. Census 2000; California Department of Justice, Criminal Justice Statistics Center; SANDAG.*

**Table 12**  
**Juvenile Misdemeanor Arrest Rates by Jurisdiction**  
**2000, 2003, and 2004**

	2000	2003	2004	Change	
				2000-04	2003-04
Carlsbad	47.0	35.3	38.1	-19%	8%
Chula Vista	35.8	22.8	22.6	-37%	-1%
Coronado	46.2	23.9	25.9	-44%	8%
El Cajon	45.7	50.3	57.5	26%	14%
Escondido	41.8	32.1	29.8	-29%	-7%
La Mesa	41.9	18.1	29.2	-30%	61%
National City	29.7	31.5	37.0	25%	17%
Oceanside	22.7	20.6	25.9	14%	26%
San Diego	46.4	37.6	36.3	-22%	-3%
Sheriff - Total	20.7	15.6	19.0	-8%	22%
Del Mar	7.5	--	24.1	--	--
Encinitas	11.3	18.6	19.2	70%	3%
Imperial Beach	42.8	32.6	52.3	22%	60%
Lemon Grove	9.5	11.9	12.2	28%	3%
Poway	19.2	16.1	15.1	-21%	-6%
San Marcos	32.2	21.5	32.9	2%	53%
Santee	36.8	24.3	27.5	-25%	13%
Solana Beach	3.8	5.1	11.8	--	--
Vista	16.4	13.7	18.7	14%	36%
Unincorporated	19.0	13.0	14.8	-22%	14%
<b>TOTAL</b>	<b>35.9</b>	<b>29.0</b>	<b>30.1</b>	<b>-16%</b>	<b>4%</b>

*NOTES: The populations used to calculate juvenile arrest rates include individuals 10-17 years of age based upon 2000 U.S. Census data and current California Department of Finance updates. Percent changes are not presented if either comparison rate is based on 30 arrests or less.*

*SOURCES: California Department of Finance; U.S. Census 2000; California Department of Justice, Criminal Justice Statistics Center; SANDAG.*

**Table 13**  
**Juvenile Status Offense Arrest Rates by Jurisdiction**  
**2000, 2003, and 2004**

	2000	2003	2004	Change	
				2000-04	2003-04
Carlsbad	4.9	0.9	2.3	--	--
Chula Vista	18.0	7.5	7.5	-58%	0%
Coronado	11.3	--	--	--	--
El Cajon	13.4	9.1	10.1	25%	11%
Escondido	19.2	10.7	9.9	-48%	-7%
La Mesa	6.5	8.4	11.1	71%	32%
National City	8.5	6.3	5.2	-39%	-17%
Oceanside	18.0	14.6	10.0	-44%	-32%
San Diego	17.5	11.3	9.5	-46%	-16%
Sheriff - Total	7.0	5.9	5.4	-23%	-8%
Del Mar	--	3.4	3.4	--	--
Encinitas	6.8	2.6	4.2	--	--
Imperial Beach	11.5	16.7	11.1	-3%	-34%
Lemon Grove	6.6	6.8	8.6	--	--
Poway	8.5	4.6	1.9	--	--
San Marcos	11.5	5.8	6.3	-45%	9%
Santee	9.3	10.1	6.2	-33%	-39%
Solana Beach	1.9	2.6	0.8	--	--
Vista	6.1	5.2	4.4	-28%	-15%
Unincorporated	6.1	5.5	5.5	-10%	0%
<b>TOTAL</b>	<b>13.5</b>	<b>9.0</b>	<b>7.8</b>	<b>-42%</b>	<b>-13%</b>

*NOTES: Status offenses include juvenile truancy, runaway, curfew violations, incorrigible behavior, and other juvenile-specific offenses (e.g., failure to obey orders of the Juvenile Court and running away from court-ordered placement). The populations used to calculate juvenile arrest rates include individuals 10-17 years of age based upon 2000 U.S. Census data and current California Department of Finance updates. Percent changes are not presented if either comparison rate is based on 30 arrests or less.*

*SOURCES: California Department of Finance; U.S. Census 2000; California Department of Justice, Criminal Justice Statistics Center; SANDAG.*

**Table 14**  
**Number of Adult Arrests by Jurisdiction**  
**2000, 2003, and 2004**

	2000	2003	2004	Change	
				2000-04	2003-04
Carlsbad	1,786	1,872	2,118	19%	13%
Chula Vista	4,048	3,784	3,619	-11%	-4%
Coronado	274	378	398	45%	5%
El Cajon	3,448	3,871	3,891	13%	1%
Escondido	5,048	5,133	4,624	-8%	-10%
La Mesa	1,100	1,264	1,358	23%	7%
National City	1,915	1,624	2,090	9%	29%
Oceanside	5,187	5,649	6,806	31%	20%
San Diego	41,458	46,849	50,262	21%	7%
Sheriff - Total	12,909	13,096	15,007	16%	15%
Del Mar	80	93	109	36%	17%
Encinitas	937	966	1,123	20%	16%
Imperial Beach	934	768	1,299	39%	69%
Lemon Grove	403	495	649	61%	31%
Poway	535	585	675	26%	15%
San Marcos	1,085	956	997	-8%	4%
Santee	771	882	988	28%	12%
Solana Beach	172	144	210	22%	46%
Vista	1,669	1,693	2,033	22%	20%
Unincorporated	6,323	6,514	6,924	10%	6%
San Diego Harbor Police	1,260	1,870	1,426	13%	-24%
California Highway Patrol	7,119	8,472	8,822	24%	4%
California State University San Marcos	4	19	84	--	--
San Diego State University	571	817	742	30%	-9%
University of California San Diego	135	171	227	68%	33%
State Parks and Recreation	443	212	241	-46%	14%
<b>TOTAL</b>	<b>86,705</b>	<b>95,395</b>	<b>101,715</b>	<b>17%</b>	<b>7%</b>

*NOTES: Total includes felony and misdemeanor arrests. Percent changes are not presented when either comparison number equals 30 or less.*

*SOURCES: California Department of Justice, Criminal Justice Statistics Center; SANDAG.*

**Table 15**  
**Number of Adult Felony Arrests by Offense Type and Jurisdiction**  
**San Diego Region 2004**

	Homicide	Rape	Robbery	Aggravated Assault	Weapons Offenses	Burglary	Larceny	Motor Vehicle Theft	Drug Law Violations	Driving Under the Influence	Other	TOTAL
Carlsbad	1	3	10	165	12	110	110	19	254	15	47	746
Chula Vista	3	5	63	449	80	287	284	93	410	28	182	1,884
Coronado	0	1	2	22	2	16	10	7	25	2	9	96
El Cajon	7	5	23	250	57	147	210	110	535	6	118	1,468
Escondido	1	2	61	451	53	155	183	121	364	32	298	1,721
La Mesa	0	2	19	147	12	89	67	29	88	5	80	538
National City	3	7	25	233	31	145	138	69	169	11	132	963
Oceanside	9	11	93	589	77	217	181	61	487	47	178	1,950
San Diego	69	49	337	3,257	461	1,155	1,428	761	6,478	37	1,792	15,824
Sheriff - Total	12	27	160	1,521	264	923	627	410	1,635	39	884	6,502
Del Mar	0	0	0	5	0	2	2	1	2	1	6	19
Encinitas	0	1	8	66	11	49	40	8	97	7	43	330
Imperial Beach	0	0	13	97	25	19	11	14	69	0	58	306
Lemon Grove	1	2	5	73	18	74	25	15	56	1	46	316
Poway	0	0	0	35	8	38	36	4	76	6	20	223
San Marcos	1	1	7	92	15	66	41	15	90	4	54	386
Santee	1	0	8	84	20	69	32	15	78	3	49	359
Solana Beach	0	0	3	13	3	16	3	0	13	0	18	69
Vista	1	3	30	184	43	133	49	54	261	6	129	893
Unincorporated	8	20	86	872	121	457	388	284	893	11	461	3,601
San Diego Harbor Police	1	0	2	24	14	8	18	6	121	0	21	215
California Highway Patrol	9	0	1	73	14	1	36	214	149	264	105	866
California State University San Marcos	0	0	0	1	1	0	2	0	0	0	1	5
San Diego State University	0	1	1	16	10	7	8	4	54	0	11	112
University of California San Diego	0	0	0	2	3	8	6	3	10	0	4	36
State Parks and Recreation	0	0	2	0	1	2	1	1	0	0	3	10
<b>TOTAL</b>	<b>115</b>	<b>113</b>	<b>799</b>	<b>7,200</b>	<b>1,092</b>	<b>3,270</b>	<b>3,309</b>	<b>1,908</b>	<b>10,779</b>	<b>486</b>	<b>3,865</b>	<b>32,936</b>

*NOTES: Homicide includes manslaughter (vehicular and non-vehicular). Other felony offenses include: kidnapping, forgery/checks/access cards, other theft-related offenses, arson, lewd conduct and other sex-related crimes, hit-and-run, and escape, bookmaking, and other felonies.*

*SOURCES: State Department of Justice, Criminal Justice Statistics Center; SANDAG.*

**Table 16**  
**Number of Adult Misdemeanor Arrests by Offense Type and Jurisdiction**  
**San Diego Region 2004**

	Manslaughter/ Assault and Battery	Weapons Offenses	Misd. Burglary	Petty Theft	Vandalism	Drug Law Violations	Drunk/ Liquor Laws	Driving Under the Influence	Prostitution	Other	TOTAL
Carlsbad	102	8	0	143	4	268	356	308	9	174	1,372
Chula Vista	305	3	0	256	49	307	183	318	2	312	1,735
Coronado	18	0	0	24	0	52	42	126	0	40	302
El Cajon	222	11	0	191	10	777	352	251	69	540	2,423
Escondido	319	6	0	197	21	575	456	660	12	657	2,903
La Mesa	132	1	0	84	6	98	127	209	25	138	820
National City	119	9	0	196	10	261	236	114	81	101	1,127
Oceanside	375	16	0	252	27	719	1,189	748	138	1,392	4,856
San Diego	3,032	75	0	1,278	219	8,305	4,597	4,280	729	11,923	34,438
Sheriff - Total	1,206	33	0	358	111	1,558	2,183	1,657	2	1,397	8,505
Del Mar	9	0	0	1	1	1	28	46	0	4	90
Encinitas	73	2	0	20	6	66	253	344	0	29	793
Imperial Beach	68	3	0	5	4	103	314	151	0	345	993
Lemon Grove	66	0	0	25	4	67	72	66	0	33	333
Poway	49	0	0	34	7	107	58	146	0	51	452
San Marcos	75	3	0	61	12	91	116	215	0	38	611
Santee	84	1	0	35	10	88	113	114	0	184	629
Solana Beach	20	0	0	0	0	8	36	68	0	9	141
Vista	156	0	0	55	8	276	319	221	1	104	1,140
Unincorporated	606	24	0	122	59	751	874	286	1	600	3,323
San Diego Harbor Police	53	73	1	22	4	376	72	178	0	432	1,211
California Highway Patrol	41	7	0	0	6	90	9	7,430	0	373	7,956
California State University San Marcos	0	2	1	1	3	8	31	26	0	7	79
San Diego State University	25	2	1	50	6	119	226	120	0	81	630
University of California San Diego	9	0	0	19	0	16	45	50	0	52	191
State Parks and Recreation	16	0	0	2	8	23	85	38	0	59	231
<b>TOTAL</b>	<b>5,974</b>	<b>246</b>	<b>3</b>	<b>3073</b>	<b>484</b>	<b>13,552</b>	<b>10,189</b>	<b>16,513</b>	<b>1,067</b>	<b>17,678</b>	<b>68,779</b>

*NOTES: Misdemeanor drug law violations include glue sniffing. Other misdemeanors include: check/access cards, other theft-related offenses, annoying a child, obscene matter, lewd conduct and other sex-related crimes, contributing to the delinquency of a minor, hit-and-run and other selected traffic offenses, and other misdemeanors.*

*SOURCES: California Department of Justice, Criminal Justice Statistics Center; SANDAG.*



**Table 17  
Number of Adult Felony Arrests by Offense Type and Jurisdiction  
San Diego Region 2003**

	Homicide	Rape	Robbery	Aggravated Assault	Weapons Offenses	Burglary	Larceny	Motor Vehicle Theft	Drug Law Violations	Driving Under the Influence	Other	TOTAL
Carlsbad	4	0	16	127	11	78	64	23	225	9	48	605
Chula Vista	9	8	63	462	91	275	272	128	518	27	160	2,013
Coronado	0	0	2	24	4	16	11	14	36	4	6	117
El Cajon	12	5	32	290	59	140	138	86	555	9	139	1,465
Escondido	5	9	43	453	65	153	207	96	425	32	339	1,827
La Mesa	2	4	20	138	15	86	43	22	167	3	80	580
National City	2	10	33	228	28	80	107	43	146	10	120	807
Oceanside	3	6	69	590	66	180	144	66	423	38	145	1,730
San Diego	65	80	360	3,444	417	1,148	1,204	683	5,594	43	1,801	14,839
Sheriff - Total	22	19	104	1,408	197	788	484	356	1,493	37	648	5,556
Del Mar	0	0	0	4	1	4	2	1	2	1	11	26
Encinitas	0	1	10	56	8	44	30	11	79	9	62	310
Imperial Beach	1	0	5	64	9	22	6	11	51	2	40	211
Lemon Grove	1	0	2	67	5	54	13	13	46	3	35	239
Poway	1	0	0	42	5	20	17	6	84	1	26	202
San Marcos	1	2	11	104	16	58	26	22	103	2	36	381
Santee	0	0	3	64	10	66	30	14	59	1	42	289
Solana Beach	0	1	0	5	0	2	4	3	6	2	8	31
Vista	7	6	25	173	26	108	53	47	232	8	60	745
Unincorporated	11	9	48	829	117	410	303	228	831	8	328	3,122
San Diego Harbor Police	0	0	3	29	24	13	21	15	163	2	31	301
California Highway Patrol	7	0	7	79	12	1	55	200	140	228	114	843
California State University San Marcos	0	0	0	0	2	0	0	2	0	0	0	4
San Diego State University	0	0	4	11	3	14	9	9	42	0	12	104
University of California San Diego	0	0	0	1	0	5	5	3	9	0	4	27
State Parks and Recreation	0	0	0	3	3	2	3	1	4	2	3	21
<b>TOTAL</b>	<b>131</b>	<b>141</b>	<b>756</b>	<b>7,287</b>	<b>997</b>	<b>2,980</b>	<b>2,767</b>	<b>1,747</b>	<b>9,948</b>	<b>444</b>	<b>3,650</b>	<b>30,848</b>

*NOTES: Homicide includes manslaughter (vehicular and non-vehicular). Other felony offenses include: kidnapping, forgery/checks/access cards, other theft-related offenses, arson, lewd conduct and other sex-related crimes, hit-and-run, and escape, bookmaking, and other felonies.*

*SOURCES: State Department of Justice, Criminal Justice Statistics Center; SANDAG.*

**Table 18**  
**Number of Adult Misdemeanor Arrests by Offense Type and Jurisdiction**  
**San Diego Region 2003**

	Manslaughter/ Assault and Battery	Weapons Offenses	Misd. Burglary	Petty Theft	Vandalism	Drug Law Violations	Drunk/ Liquor Laws	Driving Under the Influence	Prostitution	Other	TOTAL
Carlsbad	96	10	0	89	9	215	332	346	31	139	1,267
Chula Vista	254	4	0	266	40	354	187	316	2	348	1,771
Coronado	23	3	0	18	1	62	30	101	0	23	261
El Cajon	226	6	0	176	13	793	378	243	117	454	2,406
Escondido	312	9	0	212	40	625	592	801	5	710	3,306
La Mesa	103	1	0	54	6	80	128	204	10	98	684
National City	97	4	0	104	17	177	170	95	45	108	817
Oceanside	322	9	0	134	23	590	1,146	544	94	1,057	3,919
San Diego	2,952	69	1	1,241	204	7,431	4,616	3,902	832	10,762	32,010
Sheriff - Total	1,174	40	0	256	86	1,401	1,999	1,444	0	1,140	7,540
Del Mar	6	1	0	0	0	4	24	23	0	9	67
Encinitas	60	3	0	19	7	64	195	261	0	47	656
Imperial Beach	83	3	0	2	3	88	225	77	0	76	557
Lemon Grove	40	1	0	20	5	43	70	55	0	22	256
Poway	40	0	0	27	1	80	46	131	0	58	383
San Marcos	73	0	0	20	14	114	120	192	0	42	575
Santee	80	4	0	34	3	124	119	113	0	116	593
Solana Beach	13	1	0	1	0	5	27	60	0	6	113
Vista	152	1	0	30	10	197	273	195	0	90	948
Unincorporated	627	26	0	103	43	682	900	337	0	674	3,392
San Diego Harbor Police	52	31	0	32	4	547	117	247	0	539	1,569
California Highway Patrol	50	10	0	1	3	89	5	7,128	0	343	7,629
California State University San Marcos	1	0	0	0	0	4	2	8	0	0	15
San Diego State University	20	4	2	50	11	149	279	114	0	84	713
University of California San Diego	2	0	0	13	0	18	33	45	0	33	144
State Parks and Recreation	2	2	0	0	0	8	51	32	0	96	191
<b>TOTAL</b>	<b>5,688</b>	<b>202</b>	<b>3</b>	<b>2,646</b>	<b>457</b>	<b>12,551</b>	<b>10,352</b>	<b>15,570</b>	<b>1,136</b>	<b>15,942</b>	<b>64,547</b>

*NOTES: Misdemeanor drug law violations include glue sniffing. Other misdemeanors include: check/access cards, other theft-related offenses, annoying a child, obscene matter, lewd conduct and other sex-related crimes, contributing to the delinquency of a minor, hit-and-run and other selected traffic offenses, and other misdemeanors.*

*SOURCES: California Department of Justice, Criminal Justice Statistics Center; SANDAG.*

**Table 19**  
**Number of Adult Felony Arrests by Offense Type and Jurisdiction**  
**San Diego Region 2000**

	Homicide	Rape	Robbery	Aggravated Assault	Weapons Offenses	Burglary	Larceny	Motor Vehicle Theft	Drug Law Violations	Driving Under the Influence	Other	TOTAL
Carlsbad	3	5	18	81	7	70	89	12	215	12	45	557
Chula Vista	5	15	58	454	65	248	233	75	545	12	176	1,886
Coronado	0	1	0	16	1	12	6	3	10	2	30	81
El Cajon	1	6	31	368	42	113	146	30	363	5	122	1,227
Escondido	9	8	39	495	59	172	146	50	462	30	225	1,695
La Mesa	1	10	14	124	13	55	46	4	90	3	54	414
National City	7	8	55	270	27	110	104	11	164	16	99	871
Oceanside	2	23	46	674	64	199	156	14	521	32	125	1,856
San Diego	33	83	408	3,617	317	891	1,060	333	4,953	41	1,120	12,856
Sheriff - Total	16	31	150	1,368	162	634	526	137	1,403	22	429	4,878
Del Mar	0	1	0	0	2	1	5	1	6	1	2	19
Encinitas	0	2	8	57	11	36	37	3	70	2	18	244
Imperial Beach	1	0	4	57	16	20	10	17	67	1	16	209
Lemon Grove	2	2	7	59	3	46	12	11	38	1	23	204
Poway	1	1	1	35	9	20	15	1	52	2	15	152
San Marcos	0	0	3	101	17	30	28	10	109	1	41	340
Santee	0	1	7	62	14	44	33	3	65	1	25	255
Solana Beach	0	0	3	9	1	3	7	0	15	0	3	41
Vista	1	6	28	150	16	91	82	14	214	6	39	647
Unincorporated	11	18	89	838	73	343	297	77	767	7	247	2,767
San Diego Harbor Police	0	1	1	15	5	5	17	3	49	0	7	103
California Highway Patrol	11	0	0	70	10	4	14	136	141	185	72	643
California State University San Marcos	0	0	0	0	0	0	0	0	0	0	0	0
San Diego State University	0	1	1	8	2	6	4	3	14	0	7	46
University of California San Diego	0	0	0	4	2	5	2	4	2	0	0	19
State Parks and Recreation	0	0	0	3	1	0	1	0	3	0	3	11
<b>TOTAL</b>	<b>88</b>	<b>192</b>	<b>821</b>	<b>7,567</b>	<b>777</b>	<b>2,524</b>	<b>2,550</b>	<b>815</b>	<b>8,935</b>	<b>360</b>	<b>2,514</b>	<b>27,143</b>

*NOTES: Homicide includes manslaughter (vehicular and non-vehicular). Other felony offenses include: kidnapping, forgery/checks/access cards, other theft-related offenses, arson, lewd conduct and other sex-related crimes, hit-and-run, and escape, bookmaking, and other felonies.*

*SOURCES: State Department of Justice, Criminal Justice Statistics Center; SANDAG.*

**Table 20**  
**Number of Adult Misdemeanor Arrests by Offense Type and Jurisdiction**  
**San Diego Region 2000**

	<b>Manslaughter/ Assault and Battery</b>	<b>Weapons Offenses</b>	<b>Petty Theft</b>	<b>Vandalism</b>	<b>Drug Law Violations</b>	<b>Drunk/ Liquor Laws</b>	<b>Driving Under the Influence</b>	<b>Other 6</b>	<b>TOTAL</b>
Carlsbad	101	7	104	8	157	368	271	213	1,229
Chula Vista	369	13	297	49	394	323	430	287	2,162
Coronado	12	1	1	1	9	30	86	53	193
El Cajon	285	10	181	26	569	448	261	441	2,221
Escondido	357	6	174	19	710	791	626	670	3,353
La Mesa	135	2	61	7	70	137	155	119	686
National City	118	3	90	4	241	271	192	125	1,044
Oceanside	215	6	142	17	709	257	612	1,373	3,331
San Diego	2,789	59	1,513	300	7,248	4,112	3,646	8,935	28,602
Sheriff - Total	996	27	301	60	1,538	2,394	1,455	1,260	8,031
Del Mar	3	0	1	0	7	29	16	5	61
Encinitas	57	0	19	5	105	229	225	53	693
Imperial Beach	66	3	5	4	82	268	91	206	725
Lemon Grove	28	0	13	2	21	46	76	13	199
Poway	40	2	23	1	83	43	144	47	383
San Marcos	75	4	14	6	200	223	173	50	745
Santee	66	4	68	6	93	112	65	102	516
Solana Beach	15	0	2	0	21	46	41	6	131
Vista	130	1	43	4	180	331	255	78	1,022
Unincorporated	516	13	113	32	746	1,067	369	700	3,556
San Diego Harbor Police	56	21	22	5	256	97	94	606	1,157
California Highway Patrol	42	10	1	12	86	9	6,022	294	6,476
California State University San Marcos	0	0	1	0	0	1	2	0	4
San Diego State University	12	1	19	10	74	259	83	67	525
University of California San Diego	1	0	24	0	8	29	12	42	116
California State Parks and Recreation	8	1	0	1	19	174	26	203	432
<b>TOTAL</b>	<b>5,496</b>	<b>167</b>	<b>2,931</b>	<b>519</b>	<b>12,088</b>	<b>9,700</b>	<b>13,973</b>	<b>14,688</b>	<b>59,562</b>

*NOTES: Misdemeanor drug law violations include glue sniffing. Other misdemeanors include: check/access cards, other theft-related offenses, annoying a child, obscene matter, lewd conduct and other sex-related crimes, contributing to the delinquency of a minor, hit-and-run and other selected traffic offenses, and other misdemeanors.*

*SOURCES: California Department of Justice, Criminal Justice Statistics Center; SANDAG.*

**Table 21**  
**Number of Adult Arrests by Type**  
**2000, 2003, and 2004**

	2000	2003	2004	Change	
				2000-04	2003-04
Violent	14,164	14,003	14,201	<1%	1%
Property	8,820	10,143	11,563	31%	14%
Alcohol/Drug Violations	45,056	48,865	51,519	14%	5%
Weapons Offenses	944	1,199	1,338	42%	12%
Other	17,721	21,185	23,094	30%	9%
<b>TOTAL</b>	<b>86,705</b>	<b>95,395</b>	<b>101,715</b>	<b>17%</b>	<b>&lt;-7%</b>

*NOTE: Violent includes homicide/manslaughter, rape, robbery, aggravated assault, and assault and battery; property includes grand theft, motor vehicle theft, felony and misdemeanor burglary, and petty theft; alcohol/drug includes DUI and drunk/liquor laws; other includes other theft-related offenses, kidnapping, sex crimes, hit-and-run, violations of city and county ordinances, and other offenses.*

*SOURCES: California Department of Justice, Criminal Justice Statistics Center; SANDAG.*

**Table 22**  
**Number of Adult Arrests for Violent Offenses by Type**  
**2000, 2003, and 2004**

	2000	2003	2004	Change	
				2000-04	2003-04
<b>Felony</b>					
Homicide	88	131	115	31%	-12%
Rape	192	141	113	-41%	-20%
Robbery	821	756	799	-3%	6%
Aggravated Assault	7,567	7,287	7,200	-5%	-1%
Total	8,668	8,315	8,227	-5%	-1%
<b>Misdemeanor</b>					
Manslaughter/ Assault & Battery	5,496	5,688	5,974	9%	5%
<b>TOTAL</b>	<b>14,164</b>	<b>14,003</b>	<b>14,201</b>	<b>&lt;1%</b>	<b>1%</b>

*NOTE: Homicide includes felony manslaughter (vehicular and non-vehicular).*

*SOURCES: California Department of Justice, Criminal Justice Statistics Center; SANDAG.*

**Table 23**  
**Number of Adult Arrests for Property Offenses by Type**  
**2000, 2003, and 2004**

	2000	2003	2004	Change	
				2000-04	2003-04
<b>Felony</b>					
Burglary	2,524	2,980	3,270	30%	10%
Larceny Theft	2,550	2,767	3,309	30%	20%
Motor Vehicle Theft	815	1,747	1,908	134%	9%
Total	5,889	7,494	8,487	44%	13%
<b>Misdemeanor</b>					
Petty Theft/Burglary	2,931	2,649	3,076	5%	16%
<b>TOTAL</b>	<b>8,820</b>	<b>10,143</b>	<b>11,563</b>	<b>31%</b>	<b>14%</b>

SOURCES: California Department of Justice, Criminal Justice Statistics Center; SANDAG.

**Table 24**  
**Number of Adult Arrests for Alcohol- and Drug-Related Offenses by Type**  
**2000, 2003, and 2004**

	2000	2003	2004	Change	
				2000-04	2003-04
<b>Felony</b>					
Narcotics	2,706	2,719	3,022	12%	11%
Marijuana	755	729	771	2%	6%
Dangerous Drugs	5,392	6,395	6,901	28%	8%
Other Drug Offenses	82	105	85	4%	-19%
Driving Under the Influence	360	444	486	35%	9%
Total	9,295	10,392	11,265	21%	8%
<b>Misdemeanor</b>					
Marijuana	3,656	3,852	3,566	-2%	-7%
Other Drug Offenses	8,432	8,699	9,986	18%	15%
Drunk	7,736	7,622	7,895	2%	4%
Liquor Laws	1,964	2,730	2,294	17%	-16%
Driving Under the Influence	13,973	15,570	16,513	18%	6%
Total	35,761	38,473	40,254	13%	5%
<b>TOTAL</b>	<b>45,056</b>	<b>48,865</b>	<b>51,519</b>	<b>14%</b>	<b>5%</b>

NOTES: Narcotics include heroin, morphine, cocaine/rock, and barbituates. Dangerous drugs include methamphetamine, depressants, and hallucinogens. Other drug offenses include illegal possession of drug paraphernalia, use of illegal prescriptions and prescription drugs, sales of chemicals used to produce drugs, being under the influence, and other drug-related crimes. Other misdemeanor drug offenses include glue sniffing.

SOURCES: California Department of Justice, Criminal Justice Statistics Center; SANDAG.

**Table 25**  
**Number of Adult Arrests for Weapons Violations**  
**2000, 2003, and 2004**

	2000	2003	2004	Change	
				2000-2004	2003-2004
<b>Adult</b>					
Felony	777	997	1,092	41%	10%
Misdemeanor	167	202	246	47%	22%
<b>Total</b>	<b>944</b>	<b>1,199</b>	<b>1,338</b>	<b>42%</b>	<b>12%</b>

SOURCES: California Department of Justice, Criminal Justice Statistics Center; SANDAG.

**Table 26**  
**Number of Adult Felony and Misdemeanor Arrests for "Other" Offenses by Type**  
**2000, 2003, and 2004**

	2000	2003	2004	Change	
				2000-04	2003-04
<b>Felony - Other</b>					
Sex-Related	397	619	728	83%	18%
Forgery/Checks	631	716	878	39%	23%
Arson	32	59	48	50%	-19%
Other Felonies	1,454	2,256	2,211	52%	-2%
Total	2,514	3,650	3,865	54%	6%
<b>Misdemeanor - Other</b>					
Other Theft/Checks/Access Cards	377	380	499	32%	31%
Sex-Related	433	375	342	-21%	-9%
Prostitution	887	1,136	1,067	20%	-6%
Disturb Peace/Trespass/Disorderly	1,896	3,886	5,251	177%	35%
Vandalism/Graffiti	519	457	484	-7%	6%
Hit-and-Run	254	322	347	37%	8%
Selected Traffic	816	1,021	1,063	30%	4%
City/County Ordinances	5,817	5,604	5,748	-1%	3%
Failure to Appear/Non Traffic	1,484	1,224	1,297	-13%	6%
Other Misdemeanors	2,724	3,130	3,131	15%	<1%
Total	15,207	17,535	19,229	26%	10%
<b>TOTAL</b>	<b>17,721</b>	<b>21,185</b>	<b>23,094</b>	<b>30%</b>	<b>9%</b>

NOTE: Sex-related includes lewd behavior, indecent exposure, annoying a child, obscene matter, and other sex offenses; selected traffic includes driving without insurance or license, equipment violations, and others; city and county ordinances include loitering, littering, and other codes specific to cities/county; other felony and misdemeanor arrests include felony kidnapping and other felonies, and misdemeanor contributing to the delinquency of a minor, malicious mischief, joyriding, gambling, and nonsupport as well as various election, building, fire, and water code violations.

SOURCES: California Department of Justice, Criminal Justice Statistics Center; SANDAG.

**Table 27**  
**Number of Juvenile Arrests by Jurisdiction**  
**2000, 2003, and 2004**

	2000	2003	2004	Change	
				2000-04	2003-04
Carlsbad	505	488	580	15%	19%
Chula Vista	1,599	1,174	1,285	-20%	9%
Coronado	123	62	66	-46%	6%
El Cajon	848	957	1,060	25%	11%
Escondido	1,202	1,027	1,056	-12%	3%
La Mesa	320	217	289	-10%	33%
National City	413	427	504	22%	18%
Oceanside	1,014	1,082	1,106	9%	2%
San Diego	10,094	8,966	8,364	-17%	-7%
Sheriff - Total	3,769	3,234	3,702	-2%	14%
Del Mar	4	2	8	--	--
Encinitas	150	167	194	29%	16%
Imperial Beach	247	208	280	13%	35%
Lemon Grove	83	111	123	48%	11%
Poway	283	222	171	-40%	-23%
San Marcos	371	312	456	23%	46%
Santee	428	329	329	-23%	0%
Solana Beach	9	14	23	--	--
Vista	371	370	440	19%	19%
Unincorporated	1,823	1,499	1,678	-8%	12%
San Diego Harbor Police	53	71	61	15%	-14%
California Highway Patrol	121	111	105	-13%	-5%
California State University San Marcos	0	2	5	--	--
San Diego State University	19	75	50	--	-33%
University of California San Diego	8	12	9	--	--
State Parks and Recreation	83	26	40	-52%	--
<b>TOTAL</b>	<b>20,171</b>	<b>17,972</b>	<b>18,282</b>	<b>-9%</b>	<b>2%</b>

*NOTES: Total includes felony, misdemeanor, and status offense arrests. Percent changes are not presented when either comparison number equals 30 or less.*

*SOURCES: California Department of Justice, Criminal Justice Statistics Center; SANDAG.*



**Table 28**  
**Number of Juvenile Felony Arrests by Offense Type and Jurisdiction**  
**San Diego Region 2004**

	Homicide	Rape	Robbery	Aggravated Assault	Weapons Offenses	Burglary	Larceny	Motor Vehicle Theft	Drug Law Violations	Driving Under the Influence	Other	TOTAL
Carlsbad	0	0	6	21	8	66	27	13	15	0	17	173
Chula Vista	0	2	37	60	55	147	30	35	26	2	82	476
Coronado	0	0	0	1	1	7	5	1	1	0	0	16
El Cajon	0	0	28	48	43	36	28	17	22	1	34	257
Escondido	0	0	26	43	63	62	26	26	24	2	51	323
La Mesa	0	0	11	12	6	23	10	8	3	0	13	86
National City	0	0	7	20	18	49	19	14	12	0	18	157
Oceanside	1	4	32	48	37	95	28	20	34	1	36	336
San Diego	8	6	162	345	255	462	143	198	158	0	303	2,040
Sheriff - Total	1	2	54	217	153	294	86	85	100	1	161	1,154
Del Mar	0	0	0	0	0	0	0	0	0	0	0	0
Encinitas	0	0	0	3	3	20	1	3	5	0	4	39
Imperial Beach	0	0	4	13	9	16	4	5	2	0	10	63
Lemon Grove	0	0	1	14	6	17	5	5	0	0	5	53
Poway	0	0	0	2	3	10	9	3	4	1	7	39
San Marcos	0	0	7	26	33	26	6	8	16	0	11	133
Santee	0	1	9	24	7	25	3	5	7	0	14	95
Solana Beach	0	0	3	1	0	1	0	1	2	0	0	8
Vista	0	1	8	18	17	34	18	16	19	0	32	163
Unincorporated	1	0	22	116	75	145	40	39	45	0	78	561
San Diego Harbor Police	0	0	0	0	1	0	3	0	2	0	0	6
California Highway Patrol	0	0	0	4	0	0	1	16	4	8	3	36
California State University San Marcos	0	0	0	0	0	0	0	0	0	0	0	0
San Diego State University	0	0	0	0	0	0	0	0	1	0	0	1
University of California San Diego	0	0	0	1	0	0	1	1	0	0	1	4
State Parks and Recreation	0	0	0	0	0	0	0	0	0	0	0	0
<b>TOTAL</b>	<b>10</b>	<b>14</b>	<b>363</b>	<b>820</b>	<b>640</b>	<b>1,241</b>	<b>407</b>	<b>434</b>	<b>402</b>	<b>15</b>	<b>719</b>	<b>5,065</b>

*NOTES: Homicide includes manslaughter (vehicular and non-vehicular). Other felony offenses include: kidnapping, forgery/checks/access cards, other theft-related offenses, arson, lewd conduct and other sex-related crimes, hit-and-run, and escape, bookmaking, and other felonies.*

*SOURCES: California Department of Justice, Criminal Justice Statistics Center; SANDAG.*

**Table 29**  
**Number of Juvenile Misdemeanor and Status Arrests by Offense Type and Jurisdiction**  
**San Diego Region 2004**

	Manslaughter/ Assault and Battery	Weapons Offenses	Misd. Burglary	Petty Theft	Vandalism	Drug Law Violations	Drunk/ Liquor Laws	Driving Under the Influence	Prostitution	Other	TOTAL MISD.	Status	TOTAL with STATUS
Carlsbad	34	0	0	165	8	49	30	4	0	94	384	23	407
Chula Vista	81	1	0	236	68	62	18	3	0	139	608	201	809
Coronado	6	0	0	14	3	12	7	2	0	6	50	0	50
El Cajon	182	5	0	158	18	117	35	2	2	164	683	120	803
Escondido	77	2	0	141	41	91	58	4	0	136	550	183	733
La Mesa	34	0	0	63	10	14	4	3	2	17	147	56	203
National City	30	1	0	129	23	64	26	0	5	26	304	43	347
Oceanside	80	7	0	205	35	99	43	12	4	70	555	215	770
San Diego	714	28	1	641	128	538	333	29	63	2,538	5,013	1,311	6,324
Sheriff - Total	427	38	0	253	152	394	188	39	0	493	1,984	564	2,548
Del Mar	4	0	0	0	1	1	1	0	0	0	7	1	8
Encinitas	17	8	0	22	3	21	18	6	0	32	127	28	155
Imperial Beach	24	5	0	4	19	34	25	2	0	66	179	38	217
Lemon Grove	12	2	0	10	3	5	1	1	0	7	41	29	70
Poway	18	0	0	25	3	13	21	14	0	23	117	15	132
San Marcos	70	0	0	40	30	24	15	3	0	89	271	52	323
Santee	55	2	0	23	9	40	13	1	0	48	191	43	234
Solana Beach	2	0	0	3	1	3	2	1	0	2	14	1	15
Vista	55	6	0	45	19	40	19	1	0	39	224	53	277
Unincorporated	170	15	0	81	64	213	73	10	0	187	813	304	1,117
San Diego Harbor Police	2	2	0	3	0	12	2	0	0	26	47	8	55
California Highway Patrol	2	0	0	0	1	3	0	40	0	23	69	0	69
California State University San Marcos	0	0	0	0	0	1	3	1	0	0	5	0	5
San Diego State University	0	1	2	7	0	3	6	0	0	30	49	0	49
University of California San Diego	0	0	0	0	0	1	2	1	0	0	4	1	5
State Parks and Recreation	2	0	0	2	0	1	26	0	0	9	40	0	40
<b>TOTAL</b>	<b>1,671</b>	<b>85</b>	<b>3</b>	<b>2,017</b>	<b>487</b>	<b>1,461</b>	<b>781</b>	<b>140</b>	<b>76</b>	<b>3,771</b>	<b>10,492</b>	<b>2,725</b>	<b>13,217</b>

*NOTES: Misdemeanor drug law violations include glue sniffing. Other misdemeanors include: check/access cards, other theft-related offenses, annoying a child, obscene matter, lewd conduct and other sex-related crimes, contributing to the delinquency of a minor, hit-and-run and other selected traffic offenses, and other misdemeanors.*

*SOURCES: California Department of Justice, Criminal Justice Statistics Center; SANDAG.*

**Table 30  
Number of Juvenile Felony Arrests by Offense Type and Jurisdiction  
San Diego Region 2003**

	Homicide	Rape	Robbery	Aggravated Assault	Weapons Offenses	Burglary	Larceny	Motor Vehicle Theft	Drug Law Violations	Driving Under the Influence	Other	TOTAL
Carlsbad	1	1	3	15	13	31	23	12	16	0	20	135
Chula Vista	1	0	13	55	46	121	31	31	40	1	47	386
Coronado	0	0	5	1	0	6	2	0	0	0	2	16
El Cajon	0	0	24	56	42	56	16	20	22	0	31	267
Escondido	2	0	11	30	38	67	18	25	13	0	54	258
La Mesa	0	0	3	16	5	24	16	9	4	0	8	85
National City	0	0	19	15	16	41	11	11	10	0	4	127
Oceanside	0	0	38	75	39	61	29	11	29	1	60	343
San Diego	6	5	188	343	259	448	192	212	192	0	479	2,324
Sheriff - Total	0	1	42	185	122	312	91	61	82	0	124	1,020
Del Mar	0	0	0	1	0	0	0	0	0	0	0	1
Encinitas	0	0	0	6	3	6	4	1	5	0	3	28
Imperial Beach	0	0	0	6	5	12	5	3	4	0	5	40
Lemon Grove	0	0	5	10	5	21	3	4	0	0	0	48
Poway	0	0	4	16	5	10	11	1	7	0	7	61
San Marcos	0	1	2	9	20	29	9	3	16	0	15	104
Santee	0	0	1	22	9	30	1	7	3	0	14	87
Solana Beach	0	0	2	2	1	0	0	0	0	0	0	5
Vista	0	0	11	18	20	53	7	5	8	0	23	145
Unincorporated	0	0	17	95	54	151	51	37	39	0	57	501
San Diego Harbor Police	0	0	0	0	0	0	1	0	3	0	1	5
California Highway Patrol	1	0	0	1	0	0	4	9	5	4	6	30
California State University San Marcos	0	0	0	0	1	0	0	0	0	0	0	1
San Diego State University	0	0	1	0	0	1	0	1	1	0	0	4
University of California San Diego	0	0	2	0	0	0	0	0	1	0	0	3
State Parks and Recreation	0	0	0	0	0	0	0	2	0	0	1	3
<b>TOTAL</b>	<b>11</b>	<b>7</b>	<b>349</b>	<b>792</b>	<b>581</b>	<b>1,169</b>	<b>434</b>	<b>404</b>	<b>419</b>	<b>6</b>	<b>837</b>	<b>5,009</b>

*NOTES: Homicide includes manslaughter (vehicular and non-vehicular). Other felony offenses include: kidnapping, forgery/checks/access cards, other theft-related offenses, arson, lewd conduct and other sex-related crimes, hit-and-run, and escape, bookmaking, and other felonies.*

*SOURCES: California Department of Justice, Criminal Justice Statistics Center; SANDAG.*

**Table 31**  
**Number of Juvenile Misdemeanor and Status Arrests by Offense Type and Jurisdiction**  
**San Diego Region 2003**

	Manslaughter/ Assault and Battery	Weapons Offenses	Misd. Burglary	Petty Theft	Vandalism	Drug Law Violations	Drunk/ Liquor Laws	Driving Under the Influence	Prostitution	Other	TOTAL MISD.	Status	TOTAL with STATUS
Carlsbad	50	0	0	90	7	62	37	7	0	91	344	9	353
Chula Vista	79	6	0	217	59	81	27	5	0	119	593	195	788
Coronado	1	0	0	15	1	9	14	0	0	6	46	0	46
El Cajon	195	2	0	111	15	90	16	5	5	145	584	106	690
Escondido	72	2	0	118	85	73	56	8	0	162	576	193	769
La Mesa	33	0	0	25	2	8	8	2	1	11	90	42	132
National City	33	3	0	108	20	38	10	2	7	29	250	50	300
Oceanside	77	11	0	85	54	101	38	12	5	49	432	307	739
San Diego	901	28	3	787	171	590	328	38	42	2,221	5,109	1,533	6,642
Sheriff - Total	346	25	0	166	103	338	179	31	0	416	1,604	610	2,214
Del Mar	0	0	0	0	0	0	0	0	0	0	0	1	1
Encinitas	19	2	0	12	7	29	10	3	0	40	122	17	139
Imperial Beach	26	1	0	1	9	25	12	0	0	37	111	57	168
Lemon Grove	10	0	0	2	3	16	5	0	0	4	40	23	63
Poway	10	0	0	19	1	23	12	10	0	50	125	36	161
San Marcos	25	1	0	20	18	23	24	5	0	48	164	44	208
Santee	54	0	0	20	7	30	9	1	0	50	171	71	242
Solana Beach	1	0	0	1	2	1	1	0	0	0	6	3	9
Vista	51	14	0	16	18	26	8	4	0	26	163	62	225
Unincorporated	150	7	0	75	38	165	98	8	0	161	702	296	998
San Diego Harbor Police	1	0	0	3	0	14	6	0	0	27	51	15	66
California Highway Patrol	2	0	0	0	1	10	3	45	0	20	81	0	81
California State University San Marcos	0	0	0	1	0	0	0	0	0	0	1	0	1
San Diego State University	1	1	0	7	0	9	17	4	0	32	71	0	71
University of California San Diego	0	0	0	3	0	0	1	0	0	1	5	4	9
State Parks and Recreation	0	0	0	0	0	2	17	1	0	3	23	0	23
<b>TOTAL</b>	<b>1,791</b>	<b>78</b>	<b>3</b>	<b>1,736</b>	<b>518</b>	<b>1,426</b>	<b>794</b>	<b>160</b>	<b>60</b>	<b>3,332</b>	<b>9,898</b>	<b>3,065</b>	<b>12,963</b>

*NOTES: Misdemeanor drug law violations include glue sniffing. Other misdemeanors include: check/access cards, other theft-related offenses, annoying a child, obscene matter, lewd conduct and other sex-related crimes, contributing to the delinquency of a minor, hit-and-run and other selected traffic offenses, and other misdemeanors.*

*SOURCES: California Department of Justice, Criminal Justice Statistics Center; SANDAG.*

**Table 32  
Number of Juvenile Felony Arrests by Offense Type and Jurisdiction  
San Diego Region 2000**

	Homicide	Rape	Robbery	Aggravated Assault	Weapons Offenses	Burglary	Larceny	Motor Vehicle Theft	Drug Law Violations	Driving Under the Influence	Other	TOTAL
Carlsbad	0	1	2	23	2	24	11	3	9	0	17	92
Chula Vista	0	2	37	79	51	129	25	25	35	2	40	425
Coronado	0	0	0	0	2	12	2	2	0	0	3	21
El Cajon	0	1	17	36	35	65	22	6	13	0	14	209
Escondido	0	0	12	32	31	73	15	23	21	0	27	234
La Mesa	0	1	18	13	7	26	13	2	3	0	12	95
National City	1	0	11	19	16	61	16	1	14	1	7	147
Oceanside	0	5	13	54	20	70	23	7	18	0	33	243
San Diego	5	6	227	456	219	484	213	165	225	1	173	2,174
Sheriff - Total	1	5	60	208	102	296	131	59	80	1	119	1,062
Del Mar	0	0	0	1	1	0	0	0	0	0	0	2
Encinitas	0	0	5	3	4	10	4	1	8	1	2	38
Imperial Beach	0	1	9	8	12	15	5	4	4	0	5	63
Lemon Grove	0	0	0	8	2	6	4	3	2	0	7	32
Poway	0	0	2	15	5	25	11	2	6	0	4	70
San Marcos	0	1	8	20	13	13	15	1	9	0	17	97
Santee	0	0	3	22	8	40	1	5	3	0	13	95
Solana Beach	0	0	2	0	0	1	0	0	0	0	0	3
Vista	0	1	9	17	9	35	23	5	15	0	10	124
Unincorporated	1	2	22	114	48	151	68	38	33	0	61	538
San Diego Harbor Police	0	0	0	0	2	0	0	0	0	0	0	2
California Highway Patrol	0	0	0	0	0	0	2	18	1	4	3	28
California State University San Marcos	0	0	0	0	0	0	0	0	0	0	0	0
San Diego State University	0	0	0	0	0	3	2	0	1	0	0	6
University of California San Diego	0	0	0	0	0	0	0	1	0	0	0	1
State Parks and Recreation	0	0	0	0	0	0	0	0	0	0	0	0
<b>TOTAL</b>	<b>7</b>	<b>21</b>	<b>397</b>	<b>920</b>	<b>487</b>	<b>1,243</b>	<b>475</b>	<b>312</b>	<b>420</b>	<b>9</b>	<b>448</b>	<b>4,739</b>

*NOTES: Homicide includes manslaughter (vehicular and non-vehicular). Other felony offenses include: kidnapping, forgery/checks/access cards, other theft-related offenses, arson, lewd conduct and other sex-related crimes, hit-and-run, and escape, bookmaking, and other felonies.*

*SOURCES: California Department of Justice, Criminal Justice Statistics Center; SANDAG.*

**Table 33**  
**Number of Juvenile Misdemeanor and Status Arrests by Offense Type and Jurisdiction**  
**San Diego Region 2000**

	Manslaughter/ Assault and Battery	Weapons Offenses	Petty Theft	Vandalism	Drug Law Violations	Drunk/ Liquor Laws	Driving Under the Influence	Other	TOTAL MISD.	Status	TOTAL with STATUS
Carlsbad	27	1	102	15	62	37	2	128	374	39	413
Chula Vista	140	6	223	107	136	35	6	128	781	393	1,174
Coronado	2	0	6	6	7	12	0	49	82	20	102
El Cajon	71	4	203	27	76	46	4	63	494	145	639
Escondido	91	2	129	60	86	63	9	223	663	305	968
La Mesa	56	3	65	15	20	13	1	22	195	30	225
National City	21	1	95	16	21	25	1	27	207	59	266
Oceanside	55	2	90	69	98	33	10	73	430	341	771
San Diego	932	28	1,055	444	571	461	28	2,235	5,754	2,166	7,920
Sheriff - Total	349	8	252	214	350	198	21	629	2,021	686	2,707
Del Mar	0	0	0	1	0	1	0	0	2	0	2
Encinitas	8	0	23	1	8	9	3	18	70	42	112
Imperial Beach	31	0	3	19	22	19	0	51	145	39	184
Lemon Grove	8	0	2	2	9	1	1	7	30	21	51
Poway	21	0	25	9	25	18	3	47	148	65	213
San Marcos	29	0	8	23	28	18	3	93	202	72	274
Santee	41	2	34	10	40	24	1	114	266	67	333
Solana Beach	0	0	1	0	0	2	0	1	4	2	6
Vista	29	1	34	22	39	19	4	32	180	67	247
Unincorporated	182	5	122	127	179	87	6	266	974	311	1,285
San Diego Harbor Police	2	1	1	4	3	5	0	19	35	16	51
California Highway Patrol	5	0	0	1	4	4	53	26	93	0	93
California State University San Marcos	0	0	0	0	0	0	0	0	0	0	0
San Diego State University	0	0	1	0	2	8	0	2	13	0	13
University of California San Diego	0	0	1	0	0	1	0	1	3	4	7
California State Parks and Recreation	2	1	0	0	4	53	1	17	78	5	83
<b>TOTAL</b>	<b>1,753</b>	<b>57</b>	<b>2,223</b>	<b>978</b>	<b>1,440</b>	<b>994</b>	<b>136</b>	<b>3,642</b>	<b>11,223</b>	<b>4,209</b>	<b>15,432</b>

*NOTES: Misdemeanor drug law violations include glue sniffing. Other misdemeanors include: check/access cards, other theft-related offenses, annoying a child, obscene matter, lewd conduct and other sex-related crimes, contributing to the delinquency of a minor, hit-and-run and other selected traffic offenses, and other misdemeanors.*

*SOURCES: California Department of Justice, Criminal Justice Statistics Center; SANDAG.*

**Table 34**  
**Number of Juvenile Arrests by Type**  
**2000, 2003, and 2004**

	2000	2003	2004	Change	
				2000-04	2003-04
Violent	3,098	2,950	2,878	-7%	-2%
Property	4,253	3,746	4,102	-4%	10%
Alcohol/Drug Violations	2,999	2,805	2,799	-7%	<-1%
Weapons Offenses	544	659	725	33%	10%
Status	4,209	3,065	2,725	-35%	-11%
Other	5,068	4,747	5,053	<-1%	6%
<b>TOTAL</b>	<b>20,171</b>	<b>17,972</b>	<b>18,282</b>	<b>-9%</b>	<b>2%</b>

*NOTE: Violent includes homicide/manslaughter, rape, robbery, aggravated assault, and assault and battery; property includes grand theft, motor vehicle theft, felony and misdemeanor burglary, and petty theft; alcohol/drug includes DUI and drunk/liquor laws; other includes other theft-related offenses, kidnapping, sex crimes, hit-and-run, violations of city and county ordinances, and other offenses; status includes juvenile truancy, runaway, curfew violations, incorrigible behavior, and other juvenile-specific offenses (e.g., failure to obey orders of the Juvenile Court and running away from court-ordered placement).*

*SOURCES: California Department of Justice, Criminal Justice Statistics Center; SANDAG.*

**Table 35**  
**Number of Juvenile Arrests for Violent Offenses**  
**2000, 2003, and 2004**

	2000	2003	2004	Change	
				2000-04	2003-04
<b>Felony</b>					
Homicide	7	11	10	--	--
Rape	21	7	14	--	--
Robbery	397	349	363	-9%	4%
Aggravated Assault	920	792	820	-11%	4%
Total	1,345	1,159	1,207	-10%	4%
<b>Misdemeanor</b>					
Manslaughter/Assault & Battery	1,753	1,791	1,671	-5%	-7%
<b>TOTAL</b>	<b>3,098</b>	<b>2,950</b>	<b>2,878</b>	<b>-7%</b>	<b>-2%</b>

*NOTES: Homicide includes felony manslaughter (vehicular and non-vehicular). Percent changes are not presented when either comparison number equals 30 or less.*

*SOURCES: California Department of Justice, Criminal Justice Statistics Center; SANDAG.*

**Table 36**  
**Number of Juvenile Arrests for Property Offenses**  
**2000, 2003, and 2004**

	2000	2003	2004	Change	
				2000-04	2003-04
<b>Felony</b>					
Burglary	1,243	1,169	1,241	<-1%	6%
Larceny Theft	475	434	407	-14%	-6%
Motor Vehicle Theft	312	404	434	39%	7%
Total	2,030	2,007	2,082	3%	4%
<b>Misdemeanor</b>					
Petty Theft/Burglary	2,223	1,739	2,020	-9%	16%
<b>TOTAL</b>	<b>4,253</b>	<b>3,746</b>	<b>4,102</b>	<b>-4%</b>	<b>10%</b>

SOURCES: California Department of Justice, Criminal Justice Statistics Center; SANDAG.

**Table 37**  
**Number of Juvenile Arrests for Alcohol- and Drug-Related Offenses**  
**2000, 2003, and 2004**

	2000	2003	2004	Change	
				2000-04	2003-04
<b>Felony</b>					
Narcotics	85	68	72	-15%	6%
Marijuana	160	161	133	-17%	-17%
Dangerous Drugs	170	184	194	14%	5%
Other Drug Offenses	5	6	3	--	--
Driving Under the Influence	9	6	15	--	--
Total	429	425	417	-3%	-2%
<b>Misdemeanor</b>					
Marijuana	1,179	1,136	1,193	1%	5%
Other Drug Offenses	261	290	261	0%	-10%
Drunk	449	327	359	-20%	10%
Liquor Laws	545	467	422	-23%	-10%
Driving Under the Influence	136	160	140	3%	-13%
Total	2,570	2,380	2,375	-8%	<-1%
<b>TOTAL</b>	<b>2,999</b>	<b>2,805</b>	<b>2,792</b>	<b>-7%</b>	<b>&lt;-1%</b>

NOTES: Narcotics include heroin, morphine, cocaine/rock, and barbituates. Dangerous drugs include methamphetamine, depressants, and hallucinogens. Other drug offenses include illegal possession of drug paraphernalia, use of illegal prescriptions and prescription drugs, sales of chemicals used to produce drugs, under-the-influence, and other drug-related crimes. Other misdemeanor drug offenses include glue sniffing. Percent changes are not presented when either comparison number equals 30 or less.

SOURCES: California Department of Justice, Criminal Justice Statistics Center; SANDAG.



**Table 38**  
**Number of Juvenile Arrests for Weapons Violations**  
**2000, 2003, and 2004**

	2000	2003	2004	Change	
				2000-2004	2003-2004
<b>Juvenile</b>					
Felony	487	581	640	31%	10%
Misdemeanor	57	78	85	49%	9%
<b>TOTAL</b>	<b>544</b>	<b>659</b>	<b>725</b>	<b>33%</b>	<b>10%</b>

*SOURCES: California Department of Justice, Criminal Justice Statistics Center; SANDAG.*

**Table 39**  
**Number of Juvenile Arrests for Felony and Misdemeanor "Other" Offenses**  
**2000, 2003, and 2004**

	2000	2003	2004	Change	
				2000-04	2003-04
<b>Felony - Other</b>					
Sex-Related	95	103	92	-3%	-11%
Forgery/Checks	36	14	35	-3%	--
Arson	65	60	47	-28%	-22%
Other Felonies	252	660	545	116%	-17%
Total	448	837	719	60%	-14%
<b>Misdemeanor - Other</b>					
Other Theft/Checks/Access Cards	43	26	22	--	--
Sex-Related	37	31	26	--	--
Prostitution	19	60	76	--	27%
Disturb Peace/Trespass/Disorderly	668	497	524	-22%	5%
Vandalism/Graffiti	978	518	487	-50%	-6%
Hit-and-Run	57	33	38	-33%	15%
Selected Traffic	63	60	92	46%	53%
City/County Ordinances	365	205	309	-15%	51%
Failure to Appear/Non Traffic	52	38	22	--	--
Other Misdemeanors	2,338	2,442	2,738	17%	12%
Total	4,620	3,910	4,334	-6%	11%
<b>TOTAL</b>	<b>5,068</b>	<b>4,747</b>	<b>5,053</b>	<b>&lt;-1%</b>	<b>6%</b>

*NOTE: Sex-related includes lewd behavior, indecent exposure, annoying a child, obscene matter, and other sex offenses; selected traffic includes driving without insurance or license, equipment violations, and others; city and county ordinances include loitering, littering, and other codes specific to cities/county; other felony and misdemeanor arrests include felony kidnapping and other felonies, and misdemeanor contributing to the delinquency of a minor, malicious mischief, joyriding, gambling, and nonsupport as well as various election, building, fire, and water code violations.*

*SOURCES: California Department of Justice, Criminal Justice Statistics Center; SANDAG.*

**Table 40**  
**Number of Arrests for Status Offenses by Gender**  
**2000, 2003, and 2004**

	2000	2003	2004	Change	
				2000-04	2003-04
<b>Truancy</b>					
Boys	591	253	278	-53%	10%
Girls	277	164	145	-48%	-12%
Total	868	417	423	-51%	1%
<b>Runaway</b>					
Boys	231	239	191	-17%	-20%
Girls	333	335	283	-15%	-16%
Total	564	574	474	-16%	-17%
<b>Curfew</b>					
Boys	1,344	727	721	-46%	-1%
Girls	653	357	341	-48%	-4%
Total	1,997	1,084	1,062	-47%	-2%
<b>Incorrigible</b>					
Boys	15	8	9	--	--
Girls	1	5	7	--	--
Total	16	13	16	--	--
<b>Other Status</b>					
Boys	525	645	476	-9%	-26%
Girls	239	332	274	15%	-17%
Total	764	977	750	-2%	-23%
<b>TOTAL</b>	<b>4,209</b>	<b>3,065</b>	<b>2,725</b>	<b>-35%</b>	<b>-11%</b>

*NOTES: Variations in emphasis or focus on individual status offenses by law enforcement and prosecution agencies impact the number of arrests/juvenile contacts. "Other" status offenses include failure to obey orders of the Juvenile Court (such as community service and fines) and running away from court-ordered placement. Percent changes are not presented when either comparison number is equal to 30 or less.*

*SOURCES: California Department of Justice, Criminal Justice Statistics Center; SANDAG.*

**Table 41**  
**Population Estimations, San Diego Region**  
**2000, 2003, and 2004**

	2000	2003	2004	Change	
				2000-04	2003-04
<b>BY ETHNICITY</b>					
<b>Adult</b>					
White	1,249,632	1,261,492	1,260,904	1%	<-1%
Black	107,050	112,259	112,956	6%	1%
Hispanic	475,519	546,516	567,743	19%	4%
Other	257,971	298,354	309,752	20%	4%
<b>Total</b>	<b>2,090,172</b>	<b>2,218,621</b>	<b>2,251,355</b>	<b>8%</b>	<b>1%</b>
<b>Juvenile</b>					
White	136,506	140,343	140,593	3%	<1%
Black	20,925	21,826	22,128	6%	1%
Hispanic	110,414	130,272	135,062	22%	4%
Other	44,366	49,437	50,756	14%	3%
<b>Total</b>	<b>312,211</b>	<b>341,878</b>	<b>348,539</b>	<b>12%</b>	<b>2%</b>
<b>BY GENDER</b>					
<b>Adult</b>					
Male	1,043,766	1,105,842	1,119,301	7%	1%
Female	1,046,406	1,112,779	1,132,054	8%	2%
<b>Total</b>	<b>2,090,172</b>	<b>2,218,621</b>	<b>2,251,355</b>	<b>8%</b>	<b>1%</b>
<b>Juvenile</b>					
Male	160,245	174,640	177,641	11%	2%
Female	151,966	167,238	170,898	12%	2%
<b>Total</b>	<b>312,211</b>	<b>341,878</b>	<b>348,539</b>	<b>12%</b>	<b>2%</b>
<b>BY AGE</b>					
10-14	199,669	219,519	221,715	11%	1%
15-17	112,542	122,359	126,824	13%	4%
18-24	318,330	337,259	336,366	6%	<-1%
25-29	221,273	229,910	232,419	5%	1%
30-39	457,270	464,943	464,119	1%	<-1%
40 and Over	1,093,299	1,186,509	1,218,451	11%	3%
<b>Total 10+</b>	<b>2,402,383</b>	<b>2,560,499</b>	<b>2,599,894</b>	<b>8%</b>	<b>2%</b>

*NOTE: The populations used to calculate arrest rates include individuals ten years and older (10-17 for juveniles and 18 and older for adults) based upon the U.S. Census 2000 and current California Department of Finance updates.*

*SOURCES: California Department of Finance; U.S. Census 2000; SANDAG.*

**Table 42**  
**Population Estimations by Jurisdiction**  
**2000, 2003, and 2004**

	2000	2003	2004	Change	
				2000-04	2003-04
<b>Carlsbad</b>					
Adult	59,999	69,035	70,687	18%	2%
Juvenile	7,953	9,752	10,067	27%	3%
<b>Total</b>	<b>67,952</b>	<b>78,787</b>	<b>80,754</b>	19%	2%
<b>Chula Vista</b>					
Adult	123,701	143,775	149,895	21%	4%
Juvenile	21,792	26,003	26,901	23%	3%
<b>Total</b>	<b>145,493</b>	<b>169,778</b>	<b>176,796</b>	22%	4%
<b>Coronado</b>					
Adult	20,251	22,235	22,193	10%	<-1%
Juvenile	1,776	1,924	1,933	9%	<1%
<b>Total</b>	<b>22,027</b>	<b>24,159</b>	<b>24,126</b>	10%	<-1%
<b>El Cajon</b>					
Adult	68,453	70,046	70,253	3%	<1%
Juvenile	10,800	11,612	11,870	10%	2%
<b>Total</b>	<b>79,253</b>	<b>81,658</b>	<b>82,123</b>	4%	1%
<b>Escondido</b>					
Adult	93,914	98,122	99,265	6%	1%
Juvenile	15,851	17,970	18,462	16%	3%
<b>Total</b>	<b>109,765</b>	<b>116,092</b>	<b>117,727</b>	7%	1%
<b>La Mesa</b>					
Adult	43,894	44,399	44,248	1%	<-1%
Juvenile	4,651	4,980	5,038	8%	1%
<b>Total</b>	<b>48,545</b>	<b>49,379</b>	<b>49,286</b>	2%	<-1%
<b>National City</b>					
Adult	37,927	43,111	42,836	13%	-1%
Juvenile	6,976	7,942	8,219	18%	3%
<b>Total</b>	<b>44,903</b>	<b>51,053</b>	<b>51,055</b>	14%	<1%
<b>Oceanside</b>					
Adult	116,571	122,246	123,490	6%	1%
Juvenile	18,914	20,978	21,399	13%	2%
<b>Total</b>	<b>135,485</b>	<b>143,224</b>	<b>144,889</b>	7%	1%
<b>San Diego</b>					
Adult	929,531	974,256	983,583	6%	1%
Juvenile	124,003	135,719	138,219	11%	2%
<b>Total</b>	<b>1,053,534</b>	<b>1,109,975</b>	<b>1,121,802</b>	6%	1%
<b>Sheriff - Total</b>					
Adult	568,235	601,909	615,655	8%	2%
Juvenile	97,620	103,108	104,603	7%	1%
<b>Total</b>	<b>665,855</b>	<b>705,017</b>	<b>720,258</b>	8%	2%
<b>Del Mar</b>					
Adult	3,791	3,879	3,903	3%	1%
Juvenile	267	296	290	9%	-2%
<b>Total</b>	<b>4,058</b>	<b>4,175</b>	<b>4,193</b>	3%	<1%

**Table 42 (Continued)**  
**Population Estimations by Jurisdiction**  
**2000, 2003, and 2004**

<b>Encinitas</b>					
Adult	44,640	47,593	48,573	9%	2%
Juvenile	6,191	6,561	6,626	7%	1%
<b>Total</b>	<b>50,831</b>	<b>54,154</b>	<b>55,199</b>	9%	2%
<b>Imperial Beach</b>					
Adult	19,044	19,960	20,034	5%	<1%
Juvenile	3,390	3,405	3,424	1%	1%
<b>Total</b>	<b>22,434</b>	<b>23,365</b>	<b>23,458</b>	5%	<1%
<b>Lemon Grove</b>					
Adult	18,042	18,490	18,580	3%	<1%
Juvenile	3,160	3,369	3,366	7%	<-1%
<b>Total</b>	<b>21,202</b>	<b>21,859</b>	<b>21,946</b>	4%	<1%
<b>Poway</b>					
Adult	33,304	36,050	36,811	11%	2%
Juvenile	7,692	7,744	7,736	1%	<-1%
<b>Total</b>	<b>40,996</b>	<b>43,794</b>	<b>44,547</b>	9%	2%
<b>San Marcos</b>					
Adult	38,977	45,974	48,510	24%	6%
Juvenile	6,275	7,638	8,226	31%	8%
<b>Total</b>	<b>45,252</b>	<b>53,612</b>	<b>56,736</b>	25%	6%
<b>Santee</b>					
Adult	38,022	39,501	39,808	5%	1%
Juvenile	7,226	7,023	6,943	-4%	-1%
<b>Total</b>	<b>45,248</b>	<b>46,524</b>	<b>46,751</b>	3%	<1%
<b>Solana Beach</b>					
Adult	10,646	10,980	11,004	3%	<1%
Juvenile	1,051	1,170	1,185	13%	1%
<b>Total</b>	<b>11,697</b>	<b>12,150</b>	<b>12,189</b>	4%	<1%
<b>Vista</b>					
Adult	63,251	66,685	67,395	7%	1%
Juvenile	10,983	11,905	12,004	9%	1%
<b>Total</b>	<b>74,234</b>	<b>78,590</b>	<b>79,399</b>	7%	1%
<b>Unincorporated</b>					
Adult	298,518	312,797	321,037	8%	3%
Juvenile	51,385	53,997	54,803	7%	1%
<b>Total</b>	<b>349,903</b>	<b>366,794</b>	<b>375,840</b>	7%	2%
<b>SAN DIEGO REGION WITH CAMP PENDLETON</b>					
Adult	2,090,172	2,218,621	2,251,355	8%	1%
Juvenile	312,211	341,878	348,539	12%	2%
<b>TOTAL</b>	<b>2,402,383</b>	<b>2,560,499</b>	<b>2,599,894</b>	<b>8%</b>	<b>2%</b>

*NOTES: The populations used to calculate arrest rates include individuals ten years and older (10-17 for juveniles and 18 and older for adults) based upon the U.S. Census 2000 and current California Department of Finance updates. Camp Pendleton population is excluded from the Sheriff's unincorporated area but included in the region total.*

*SOURCES: California Department of Finance; U.S. Census 2000; SANDAG.*