



Arrests 2005: Law Enforcement Response to Crime in the San Diego Region

December 2006

Cynthia Burke, Ph.D.
Division Director



401 B Street
Suite 800
San Diego, CA 92101
(619) 699-1900

BOARD OF DIRECTORS



The 18 cities and county government are SANDAG serving as the forum for regional decision-making. SANDAG builds consensus; plans, engineers, and builds public transit; makes strategic plans; obtains and allocates resources; and provides information on a broad range of topics pertinent to the region's quality of life.

CHAIR: Hon. Mickey Cafagna
FIRST VICE CHAIR: Hon. Mary Teresa Sessom
SECOND VICE CHAIR: Hon. Lori Holt Pfeiler
EXECUTIVE DIRECTOR: Gary L. Gallegos

CITY OF CARLSBAD

Hon. Matt Hall, Mayor Pro Tem
(A) Hon. Bud Lewis, Mayor
(A) Hon. Ann Kulchin, Councilmember

CITY OF CHULA VISTA

Hon. Steve Padilla, Mayor
(A) Hon. Jerry Rindone, Councilmember
(A) Hon. John McCann, Deputy Mayor

CITY OF CORONADO

Hon. Phil Monroe, Councilmember
(A) Hon. Frank Tierney, Councilmember
(A) Hon. Carrie Downey, Councilmember

CITY OF DEL MAR

Hon. Crystal Crawford, Mayor
(A) Hon. David Druker, Councilmember
(A) Hon. Henry Abarbanel, Councilmember

CITY OF EL CAJON

Hon. Mark Lewis, Mayor
(A) Hon. Jillian Hanson-Cox, Councilmember

CITY OF ENCINITAS

Hon. Christy Guerin, Mayor
(A) Hon. Jerome Stocks, Councilmember

CITY OF ESCONDIDO

Hon. Lori Holt Pfeiler, Mayor
(A) Hon. Ed Gallo, Mayor Pro Tem
(A) Hon. Ron Newman, Councilmember

CITY OF IMPERIAL BEACH

Hon. Patricia McCoy, Councilmember
(A) Hon. Diane Rose, Mayor
(A) Hon. Mayda Winter, Councilmember

CITY OF LA MESA

Hon. Art Madrid, Mayor
(A) Hon. Barry Jantz, Councilmember
(A) Hon. David Allan, Vice Mayor

CITY OF LEMON GROVE

Hon. Mary Teresa Sessom, Mayor
(A) Hon. Jerry Jones, Councilmember
(A) Hon. Jerry Selby, Councilmember

CITY OF NATIONAL CITY

Hon. Ron Morrison, Vice Mayor
(A) Hon. Frank Parra, Councilmember
(A) Hon. Louie Natividad, Councilmember

CITY OF OCEANSIDE

Hon. Shari Mackin, Deputy Mayor
(A) Hon. Esther Sanchez, Councilmember
(A) Hon. Jim Wood, Mayor

CITY OF POWAY

Hon. Mickey Cafagna, Mayor
(A) Hon. Robert Emery, Councilmember
(A) Hon. Don Higginson, Councilmember

CITY OF SAN DIEGO

Hon. Jerry Sanders, Mayor
Hon. Jim Madaffer, Councilmember
(A) Hon. Scott Peters, Council President

CITY OF SAN MARCOS

Hon. Pia Harris-Ebert, Vice Mayor
(A) Hon. Hal Martin, Councilmember
(A) Hon. Corky Smith, Mayor

CITY OF SANTEE

Hon. Jack Dale, Councilmember
(A) Hon. Hal Ryan, Councilmember
(A) Hon. Randy Voepel, Mayor

CITY OF SOLANA BEACH

Hon. Joe Kellejian, Councilmember
(A) Hon. Lesa Heebner, Deputy Mayor
(A) Hon. David Powell, Mayor

CITY OF VISTA

Hon. Judy Ritter, Mayor Pro Tem
(A) Hon. Bob Campbell, Councilmember
(A) Hon. Steve Gronke, Councilmember

COUNTY OF SAN DIEGO

Hon. Bill Horn, Chairman
(A) Hon. Ron Roberts, Vice Chairman

IMPERIAL COUNTY

(Advisory Member)
Hon. Victor Carrillo, Chairman
(A) Hon. David Ouzan, Councilmember

CALIFORNIA DEPARTMENT OF TRANSPORTATION

(Advisory Member)
Will Kempton, Director
(A) Pedro Orso-Delgado, District 11 Director

METROPOLITAN TRANSIT SYSTEM

(Advisory Member)
Harry Mathis, Chairman
(A) Hon. Jerry Rindone, Vice Chairman
(A) Hon. Bob Emery, Board Member

NORTH COUNTY TRANSIT DISTRICT

(Advisory Member)
Hon. Jerome Stocks, Chairman
(A) Hon. Lesa Heebner, Planning Committee Chair
(A) Hon. Norine Sigafoose, Monitoring Committee Chair

U.S. DEPARTMENT OF DEFENSE

(Advisory Member)
CAPT Michael Giorgione, USN, CEC
Commanding Officer, Southwest Division
Naval Facilities Engineering Command
(A) CAPT Steve Wirsching, USN, CEC
Executive Officer, Southwest Division
Naval Facilities Engineering Command

SAN DIEGO UNIFIED PORT DISTRICT

(Advisory Member)
Vacant
(A) Michael Bixler, Commissioner

SAN DIEGO COUNTY WATER AUTHORITY

(Advisory Member)
Marilyn Dailey, Commissioner
(A) Mark Muir, Commissioner

MEXICO

(Advisory Member)
Hon. Luis Cabrera C.
Consulate General of Mexico

As of September 22, 2006

ARRESTS 2005: LAW ENFORCEMENT RESPONSE TO CRIME IN THE SAN DIEGO REGION

INTRODUCTION

The Criminal Justice Research Division of the San Diego Association of Governments (SANDAG) functions as the Clearinghouse for criminal justice information for the region. On an annual basis, the Division prepares a report on local criminal justice agencies' response to crime in the region, as measured by arrest statistics. Such information provides an added dimension to our bi-annual reports on crime data for understanding the nature of crime and an additional measure that can be used in justice system planning.

This CJ Bulletin includes regional arrest rates per 1,000 adult and juvenile population, as well as numbers of arrests by offense type. In addition, 42 supplemental tables, which include statistics for individual jurisdictions, also are presented.

Some points to remember when interpreting these numbers include:

- Similar to how the FBI counts reported crimes, the offense or charge attributed to an arrest may reflect only the most serious out of a number of violations included in the case.
- Arrests are documented by the location at which the arrest occurred and cannot be assumed to have any relationship to the location of the crime incident or the residence of the alleged offender.
- Arrest and crime rates and numbers should not be compared to one another. One reason is that the two events may occur in two entirely different periods of time, with an arrest made months or even years after the related crime has been reported.

FAST FACTS

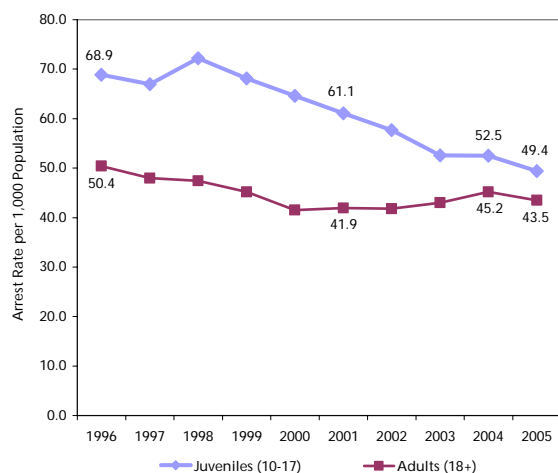
- The adult arrest rate decreased for the first time since 2001 to 2002 (from 45.2 in 2004 to 43.5 in 2005). This decline was most directly related to fewer arrests at the misdemeanor level.
- The juvenile arrest rate declined each year since 1998, to a low of 49.4 per 1,000 population in 2005.
- Compared to other large California counties, San Diego had the second highest adult and juvenile arrest rates in 2005, surpassed by only Los Angeles for adults and Santa Clara for juveniles.
- On average, there were 271 adult arrests and 47 juvenile arrests made by local law enforcement agencies each day in 2005.
- Around half (52%) of all adult arrests were for an alcohol- or drug-related offense.
- Overall, juveniles represent only 15 percent of all arrests in the San Diego region. However, they represented one in three weapons offense arrests.
- The number of juveniles arrested for a status offense has declined 37 percent over the past five years.

TEN-YEAR ARREST RATE TRENDS

In 2005, there were 43.5 adults arrested per 1,000 population, as Figure 1 shows. This arrest rate, which was the first decrease since 2001 to 2002, represented a four percent drop from 2004. Across the jurisdictions, the adult arrest rate varied from 14.8 to 60.2, with eleven jurisdictions reporting a higher rate in 2005 than 2004 and eight a lower rate (Table 7).

The arrest rate for juveniles, which traditionally has been higher than for adults, has shown a somewhat different pattern over time (Figure 1). Rather than increasing since 2000, the downward trend that started in 1999 continued through 2005 to a low of 49.4 per 1,000 population. As such, the difference between the 2005 adult and juvenile arrest rates was much smaller than in previous years (i.e., 43.5 versus 49.4 in 2005 compared to 50.4 versus 68.9 in 1996). Across the jurisdictions, the juvenile arrest rate varied from 26.9 to 77.6 in 2005 (Table 10).

**Figure 1
BOTH ADULT AND JUVENILE
ARREST RATES DECLINED
BETWEEN 2004 AND 2005**



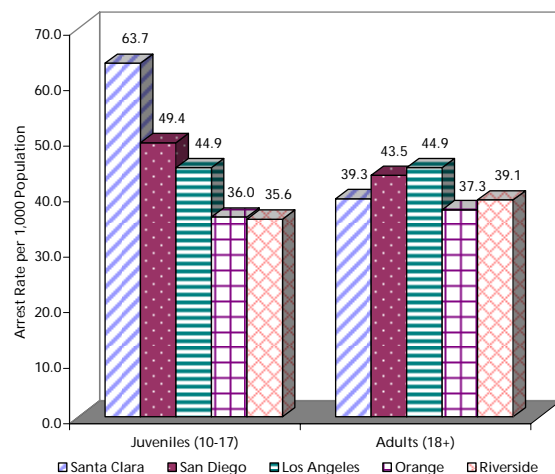
SOURCES: California Department of Justice; SANDAG

Since 2001, the misdemeanor arrest rate for adults decreased six percent (Table 9), while the felony arrest rate actually increased eleven percent (Table 8). For juveniles, both rates decreased to an even greater degree (-16% for felonies and -12% for misdemeanors) (Tables 11 and 12).

SAN DIEGO COMPARED TO OTHER CALIFORNIA COUNTIES

In 2005, San Diego County had the second highest adult and juvenile arrest rate, compared to the other four most populated counties in the State that year: Santa Clara, Los Angeles, Orange, and Riverside (Figure 2). For juveniles, San Diego's arrest rate was only lower than Santa Clara's. For adults, it followed Los Angeles. Over the past five years, the juvenile arrest rate decreased in each of these jurisdictions (from 3% in Riverside to 20% in Orange), with the exception of Santa Clara (which had an increase of 17%). During the same time period, the adult arrest rate decreased in Santa Clara (-3%), Orange (-3%), and Riverside (-2%), but increased in San Diego (4%) and Los Angeles (10%) (Table 6).

**Figure 2
SAN DIEGO COUNTY HAD
SECOND HIGHEST ADULT AND
JUVENILE ARREST RATES IN 2005**

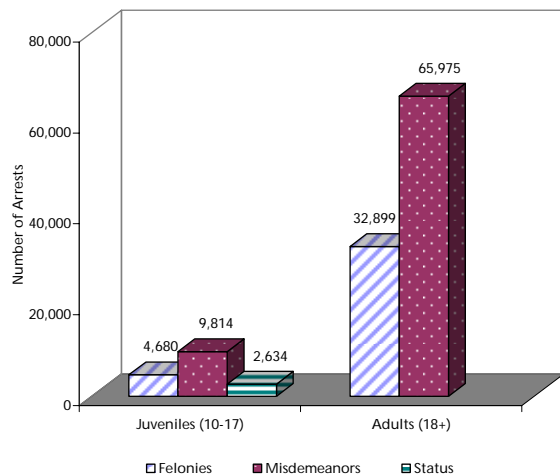


SOURCES: California Department of Justice; SANDAG

NUMBER OF ADULT AND JUVENILE ARRESTS

Even though juveniles have historically had a higher arrest rate compared to adults, it is important to note that many more adults actually are arrested. In 2005, there was a total of 98,874 adult arrests and 17,128 juvenile arrests, with the majority of these at the misdemeanor level (Figure 3). In other words, on average, there were about 271 adults and 47 juveniles arrested every day in the San Diego region by local law enforcement agencies in 2005 (not shown).

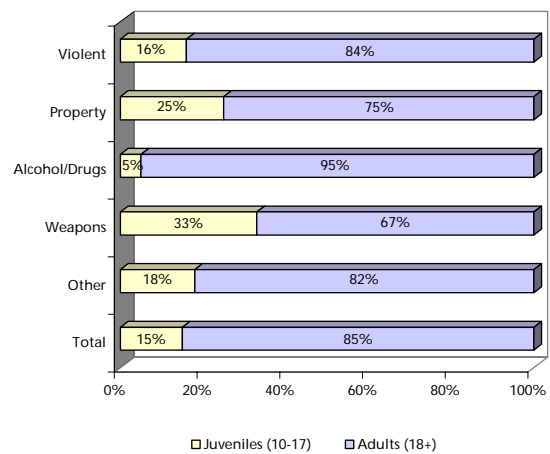
Figure 3
MOST ARRESTS ARE OF ADULTS FOR MISDEMEANOR OFFENSES IN 2005



SOURCES: California Department of Justice, SANDAG

As Figure 4 shows, while 15 percent of all individuals arrested in 2005 were juveniles, there was variation by crime type, with juveniles more likely to be arrested for weapons offenses (33%) and property offenses (25%), and less likely to be arrested for alcohol- and other drug-related offenses (5%).

Figure 4
JUVENILES REPRESENT HIGH PROPORTION OF ARRESTS FOR WEAPONS OFFENSES IN 2005

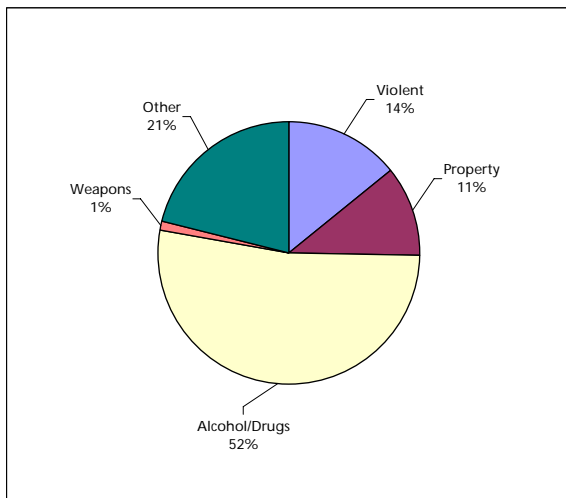


SOURCES: California Department of Justice; SANDAG

ARRESTS BY OFFENSE TYPE

What types of crimes are adults and juveniles arrested for? As Figure 5 shows, around half (52%) of adult arrests were for alcohol- or other drug-related violations. In comparison, juveniles were most likely to be arrested for an "other" or property-related offense, and just 16 percent of juvenile arrests were for alcohol- or other drug-related offenses (Figure 6).

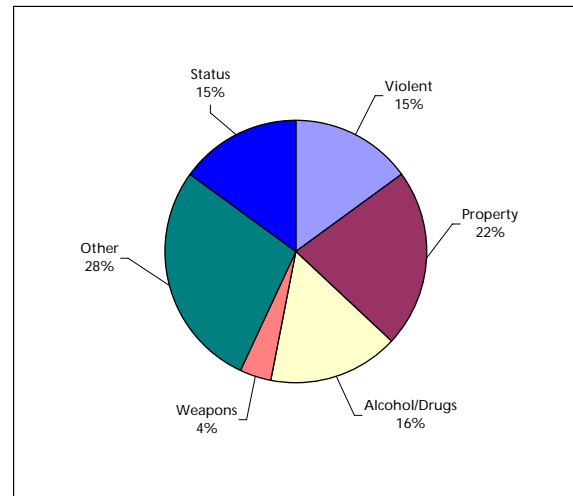
**Figure 5
ADULTS MORE LIKELY TO BE ARRESTED FOR ALCOHOL- AND OTHER DRUG-RELATED OFFENSES IN 2005**



TOTAL = 98,874

SOURCES: California Department of Justice; SANDAG

**Figure 6
JUVENILES MORE LIKELY TO BE ARRESTED FOR PROPERTY AND OTHER TYPES OF OFFENSES IN 2005**

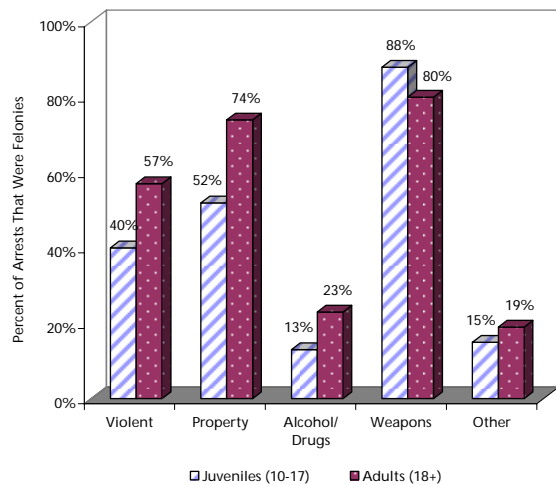


TOTAL = 17,128

SOURCES: California Department of Justice; SANDAG

There also was variation across the arrest categories in what percent of arrests represented felony- versus misdemeanor-level offenses. As Figure 7 shows, while more than three-quarters of juvenile and adult arrests for weapons offenses were at the felony level (88% and 80%, respectively), a much smaller percent were felonies in the alcohol/drug (13% and 23%) and other offense categories (15% and 19%). In addition, adults were considerably more likely than juveniles to be arrested for a felony for both the violent (57% versus 40%) and property (74% versus 52%) offense categories.

Figure 7
MOST ARRESTS FOR WEAPONS OFFENSES
AT THE FELONY LEVEL IN 2005



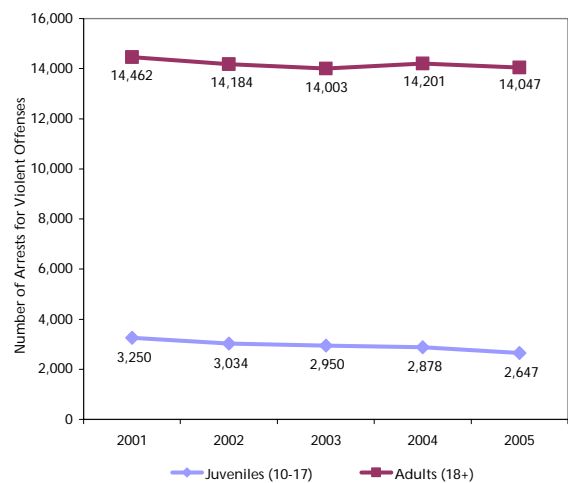
SOURCES: California Department of Justice; SANDAG

Violent Offenses

There were 14,047 adult and 2,647 juvenile arrests for violent offenses in 2005 (Figure 8). While the number of adult arrests for violent offenses did not vary dramatically over the one- (-1%) and five-year (-3%) periods, the number of juvenile arrests for violent offenses decreased 19 percent from 2001 to 2005 and 8 percent since 2004 (Tables 21 and 34).

The violent offense arrest category includes four felony-level offenses (homicide, rape, robbery, and aggravated assault) and two misdemeanor-level offenses (manslaughter and assault/battery). The most notable change over the past five years was the 29 percent decrease in juvenile felony-level violent offenses, compared to 7 percent for adults (Tables 22 and 35). This difference was mirrored over one year as well, with felony-level arrests of juveniles for violent offenses down 12 percent, compared to 3 percent for adults.

Figure 8
NUMBER OF ARRESTS FOR
VIOLENT OFFENSES DECREASED
OVER PAST FIVE YEARS

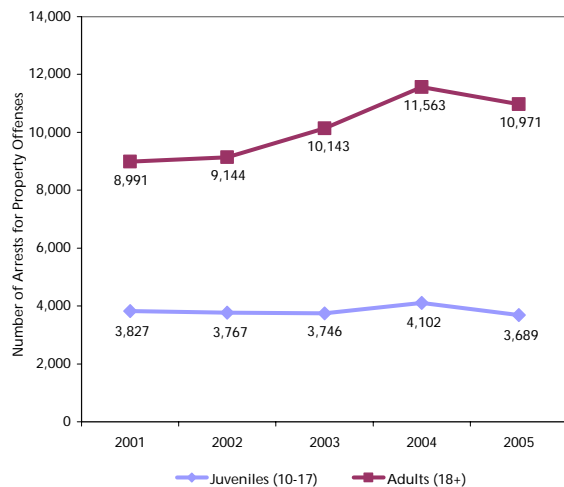


SOURCES: California Department of Justice; SANDAG

Property Offenses

Property offenses include burglary, larceny, and motor vehicle theft at the felony level, and petty theft and burglary at the misdemeanor level. In 2005, there were 10,971 adults arrested for a property offense, which represented a five percent decrease from 2004. The number of juvenile arrests for a property offense decreased ten percent, from 4,102 in 2004 to 3,689 in 2005 (Figure 9 and Tables 21 and 34).

Figure 9
ARRESTS FOR PROPERTY OFFENSES
DOWN FOR BOTH ADULTS AND
JUVENILES OVER PAST YEAR



SOURCES: California Department of Justice; SANDAG

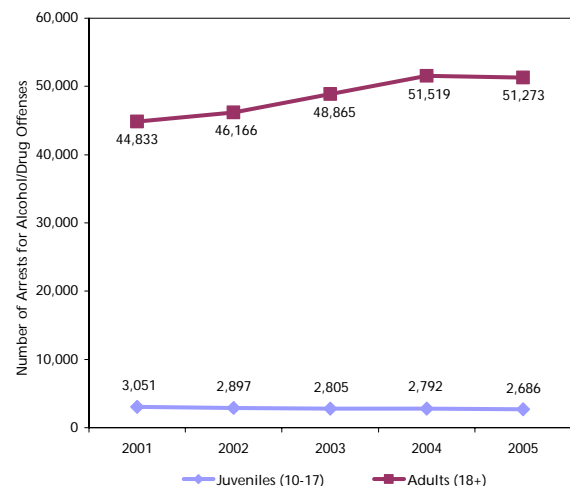
While there were one-year decreases in property-crime arrests, the number of adults arrested for felony-level offenses was higher (26%) in 2005, compared to 2001 due, in part, to the considerable increase in arrests for motor vehicle theft (98%) (Table 23). In comparison, there were fewer juveniles arrested for felony-level property crime (-5%), in 2005, compared to 2001, even though there was a 14 percent increase in arrests for motor vehicle theft (Table 36).

Alcohol- and Other Drug-Related Offenses

In 2005, there were 51,273 adult and 2,686 juvenile arrests for alcohol- and other drug-related offenses (Figure 10). This equates to more than six arrests every hour of every day (not shown). For adults, the number of arrests decreased less than one percent from one year earlier, while the number decreased four percent for juveniles (Tables 21 and 34).

Comparing 2001 to 2005, the most notable change for adults was that the only alcohol/drug felony arrest type to decrease in number (by 52%) was other drug offenses, while each of the other four categories actually increased (Table 24). Other drug offenses include illegal possession of drug paraphernalia, use of illegal prescription drugs, sales of chemicals used to produce drugs, and being under the influence. In comparison, juveniles were less likely to be arrested for all felony-level alcohol or drug-related offenses (Table 37).

Figure 10
ADULT ARRESTS FOR ALCOHOL-
AND OTHER DRUG-RELATED
OFFENSES DOWN SLIGHTLY FROM 2004



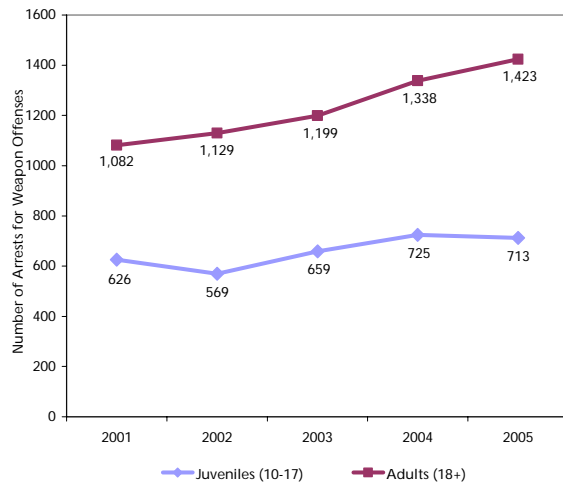
SOURCES: California Department of Justice; SANDAG

Weapons Violations

There were 1,423 adult arrests and 713 juvenile arrests for weapons violations in 2005 (Figure 11). Over the past five years, adult and juvenile arrests for weapon offenses have increased more than any other category of offense (by 32% and 14%, respectively) (Tables 21 and 34).

For adults, the number of misdemeanor arrests showed a greater one-year increase than felonies (15% versus 4%). For juveniles, felony arrests decreased (-2%), while misdemeanor arrests increased (4%) (Tables 25 and 38).

Figure 11
ARRESTS FOR WEAPONS OFFENSES UP OVER PAST FIVE YEARS FOR ADULTS



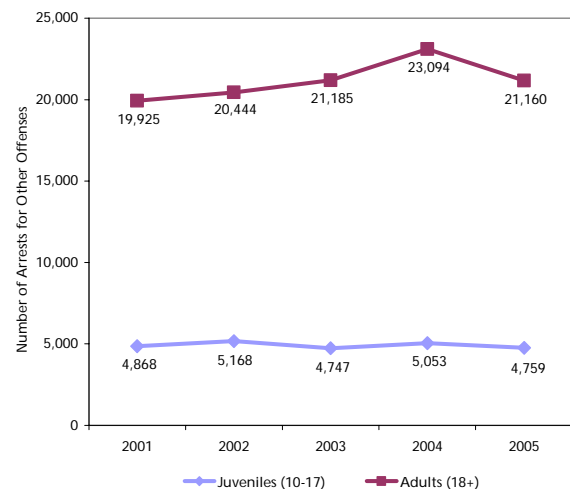
SOURCES: California Department of Justice; SANDAG

Other Offenses

In 2005, "other" offenses represented about one-quarter (21% of adult and 28% of juvenile) of all arrests (Figures 5 and 6). This equated to 21,160 adult arrests and 4,759 juvenile arrests in 2005, decreases of eight percent and six percent, respectively, from 2004 (Figure 12 and Tables 21 and 34).

At the felony-level, "other" charges include sex-related offenses, forgery, and arson, as well as other felonies (such as kidnapping). At the misdemeanor level, offense types include other theft-related charges, sex-related and prostitution, disturbing the peace, vandalism/graffiti, hit-and-run, selected traffic offenses, violations of city/county ordinances, failure to appear in court offenses, and other charges such as contributing to the delinquency of a minor. One-year notable changes for adults included a 23 percent decrease in arrests for forgery and a 24 percent increase in misdemeanor hit-and-run, (Table 26). For juveniles, one-year changes at the misdemeanor level included a 40 percent decrease in arrests for traffic offenses and a 30 percent decrease for prostitution (Table 39).

Figure 12
NUMBER OF ARRESTS FOR OTHER OFFENSES DECREASED IN PAST YEAR

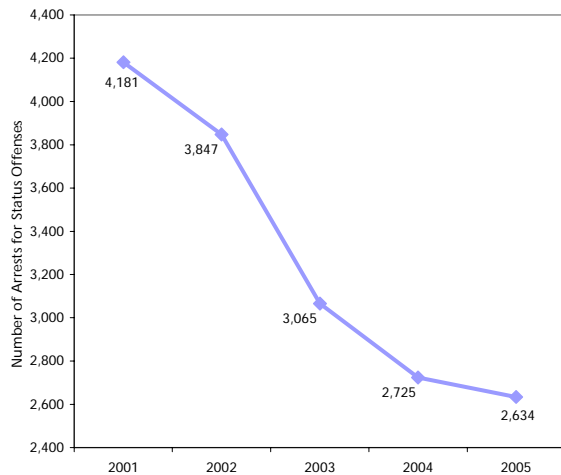


SOURCES: California Department of Justice; SANDAG

Status Offenses

There were 2,634 status offense arrests in 2005, which represented a five-year decline of 37 percent and a one-year decline of 3 percent (Figure 13 and Table 40). Over the past five years, the number of arrests for truancy and curfew violations decreased to the greatest degree (45% and 41%, respectively), compared to other status offenses.

Figure 13
NUMBER OF STATUS OFFENSE ARRESTS
HAS DECLINED OVER PAST FIVE YEARS



SOURCES: California Department of Justice; SANDAG

LIST OF TABLES

Table 1	Total Arrest Rates by Jurisdiction, 2001, 2004, and 2005.....	Page 14
Table 2	Total Arrest Rates by Age, 2001, 2004, and 2005	Page 15
Table 3	Total Arrest Rates by Ethnicity, 2001, 2004, and 2005	Page 16
Table 4	Felony Arrest Rates by Jurisdiction, 2001, 2004, and 2005	Page 17
Table 5	Misdemeanor Arrest Rates by Jurisdiction, 2001, 2004, and 2005	Page 18
Table 6	Total Arrest Rates, Five California Counties and State of California, Adults and Juveniles, 2001, 2004, and 2005	Page 19
Table 7	Adult Arrest Rates by Jurisdiction, 2001, 2004, and 2005	Page 20
Table 8	Adult Felony Arrest Rates by Jurisdiction, 2001, 2004, and 2005.....	Page 21
Table 9	Adult Misdemeanor Arrest Rates by Jurisdiction, 2001, 2004, and 2005.....	Page 22
Table 10	Juvenile Arrest Rates by Jurisdiction, 2001, 2004, and 2005.....	Page 23
Table 11	Juvenile Felony Arrest Rates by Jurisdiction, 2001, 2004, and 2005.....	Page 24
Table 12	Juvenile Misdemeanor Arrest Rates by Jurisdiction, 2001, 2004, and 2005.....	Page 25
Table 13	Juvenile Status Offense Arrest Rates by Jurisdiction, 2001, 2004, and 2005	Page 26
Table 14	Number of Adult Arrests by Jurisdiction, 2001, 2004, and 2005	Page 27
Table 15	Number of Adult Felony Arrests, by Offense Type and Jurisdiction, San Diego Region, 2005	Page 28
Table 16	Number of Adult Misdemeanor Arrests by Offense Type and Jurisdiction, San Diego Region, 2005	Page 29
Table 17	Number of Adult Felony Arrests by Offense Type and Jurisdiction, San Diego Region, 2004	Page 30
Table 18	Number of Adult Misdemeanor Arrests by Offense Type and Jurisdiction, San Diego Region, 2004	Page 31
Table 19	Number of Adult Felony Arrests by Offense Type and Jurisdiction, San Diego Region, 2001	Page 32

Table 20	Number of Adult Misdemeanor Arrests by Offense Type and Jurisdiction, San Diego Region, 2001	Page 33
Table 21	Number of Adult Arrests by Type, 2001, 2004, and 2005	Page 34
Table 22	Number of Adult Arrests for Violent Offenses by Type, 2001, 2004, and 2005	Page 34
Table 23	Number of Adult Arrests for Property Offenses by Type, 2001, 2004, and 2005	Page 35
Table 24	Number of Adult Arrests for Alcohol- and Drug-Related Offenses by Type, 2001, 2004, and 2005	Page 35
Table 25	Number of Adult Arrests for Weapons Violations, 2001, 2004, and 2005	Page 36
Table 26	Number of Adult Felony and Misdemeanor Arrests for "Other" Offenses by Type, 2001, 2004, and 2005	Page 36
Table 27	Number of Juvenile Arrests by Jurisdiction, 2001, 2004, and 2005	Page 37
Table 28	Number of Juvenile Felony Arrests by Offense Type and Jurisdiction, San Diego Region, 2005	Page 38
Table 29	Number of Juvenile Misdemeanor and Status Arrests by Offense Type and Jurisdiction, San Diego Region, 2005	Page 39
Table 30	Number of Juvenile Felony Arrests by Offense Type and Jurisdiction, San Diego Region, 2004	Page 40
Table 31	Number of Juvenile Misdemeanor and Status Arrests by Offense Type and Jurisdiction, San Diego Region, 2004	Page 41
Table 32	Number of Juvenile Felony Arrests by Offense Type and Jurisdiction, San Diego Region, 2001	Page 42
Table 33	Number of Juvenile Misdemeanor and Status Arrests by Offense and Jurisdiction, San Diego Region, 2001	Page 43
Table 34	Number of Juvenile Arrests by Type, 2001, 2004, and 2005	Page 44
Table 35	Number of Juvenile Arrests for Violent Offenses, 2001, 2004, and 2005	Page 44
Table 36	Number of Juvenile Arrests for Property Offenses, 2001, 2004, and 2005	Page 45
Table 37	Number of Juvenile Arrests for Alcohol- and Drug-Related Offenses, 2001, 2004, and 2005	Page 45

Table 38	Number of Juvenile Arrests for Weapons Violations, 2001, 2004, and 2005	Page 46
Table 39	Number of Juvenile Arrests for Felony and Misdemeanor "Other" Offenses, 2001, 2004, and 2005	Page 46
Table 40	Number of Arrests for Status Offenses by Gender, 2001, 2004, and 2005	Page 47
Table 41	Population Estimations, San Diego Region, 2001, 2004, and 2005	Page 48
Table 42	Population Estimations by Jurisdiction, San Diego Region, 2001, 2004, and 2005	Page 49

Table 1
TOTAL ARREST RATES BY JURISDICTION
2001, 2004, and 2005

	2001	2004	2005	Change	
				2001-2005	2004-2005
Carlsbad	33.0	33.4	32.3	-2%	-3%
Chula Vista	34.8	27.7	29.2	-16%	5%
Coronado	21.7	19.2	18.6	-14%	-3%
El Cajon	51.1	60.3	62.7	23%	4%
Escondido	51.8	48.2	55.5	7%	15%
La Mesa	28.9	33.4	31.0	7%	-7%
National City	49.8	50.8	46.3	-7%	-9%
Oceanside	40.6	54.6	57.0	40%	4%
San Diego	50.6	52.3	47.3	-7%	-10%
Sheriff - Total	25.1	26.0	25.7	2%	-1%
Del Mar	28.9	27.9	26.9	-7%	-4%
Encinitas	24.1	23.9	24.5	2%	3%
Imperial Beach	52.8	67.3	58.2	10%	-14%
Lemon Grove	26.6	35.2	34.2	29%	-3%
Poway	19.2	19.0	20.6	7%	8%
San Marcos	29.9	25.6	22.8	-24%	-11%
Santee	30.0	28.2	31.0	3%	10%
Solana Beach	14.9	19.1	14.9	0%	-22%
Vista	27.5	31.1	33.2	21%	7%
Unincorporated	22.5	22.9	22.5	0%	-2%
TOTAL	44.5	46.2	44.3	0%	-4%

NOTES: Total includes felony, misdemeanor, and status offense arrests. The populations used to calculate arrest rates include individuals ten years and older (10-17 for juveniles and 18 and older for adults), based upon U.S. Census 2000 and current California Department of Finance updates.

SOURCES: California Department of Justice, Criminal Justice Statistics Center; U.S. Census Bureau, Census 2000; California Department of Finance, Revised E5 City/County Population Estimates, May 2006; SANDAG, Demographic/Economic Estimates August 2006

Table 2
TOTAL ARREST RATES BY AGE
2001, 2004, and 2005

	2001	2004	2005	Change	
				2001-2005	2004-2005
14 and Under	28.9	24.6	23.2	-20%	-6%
15-17	119.0	101.2	93.4	-22%	-8%
18-24	88.8	97.8	91.5	3%	-6%
25-29	56.7	64.1	66.7	18%	4%
30-39	52.7	52.2	49.6	-6%	-5%
40 and Over	21.0	24.4	24.0	14%	-2%
TOTAL	44.5	46.2	44.3	<-1%	-4%

NOTES: The populations used to calculate arrest rates include individuals ten years and older (10-17 for juveniles and 18 and older for adults), based upon U.S. Census 2000 and current California Department of Finance updates.

SOURCES: California Department of Justice, Criminal Justice Statistics Center; U.S. Census Bureau, Census 2000; California Department of Finance, Revised E5 City/County Population Estimates, May 2006; SANDAG, Demographic/Economic Estimates August 2006

Table 3
TOTAL ARREST RATES BY ETHNICITY
2001, 2004, and 2005

	2001	2004	2005	Change	
				2001-2005	2004-2005
White	36.0	38.6	36.5	1%	-5%
Adult	34.4	38.7	36.5	6%	-6%
Juvenile	50.7	38.3	36.9	-27%	-4%
Black	137.1	146.0	134.0	-2%	-8%
Adult	132.9	146.0	135.5	2%	-7%
Juvenile	158.4	146.1	126.2	-20%	-14%
Hispanic	55.8	55.1	54.9	-2%	<-1%
Adult	53.3	53.6	54.2	2%	1%
Juvenile	66.2	61.2	58.1	-12%	-5%
Other	22.0	20.6	19.6	-11%	-5%
Adult	19.8	19.4	18.5	-7%	-5%
Juvenile	34.8	27.7	26.8	-23%	-3%
Total	44.5	46.2	44.3	<-1%	-4%
Adult	41.9	45.2	43.5	4%	-4%
Juvenile	61.1	52.5	49.4	-19%	-6%

NOTES: Total includes felony, misdemeanor, and status arrests. Adult rates include felony and misdemeanor arrests; juvenile rates include felony, misdemeanor, and status arrests. The populations used to calculate arrest rates include individuals ten years and older (10-17 for juveniles and 18 and older for adults), based upon U.S. Census 2000 and current California Department of Finance updates.

SOURCES: California Department of Justice, Criminal Justice Statistics Center; U.S. Census Bureau, Census 2000; California Department of Finance, Revised E5 City/County Population Estimates, May 2006; SANDAG, Demographic/Economic Estimates August 2006

Table 4
FELONY ARREST RATES BY JURISDICTION
2001, 2004, and 2005

	2001	2004	2005	Change	
				2001-2005	2004-2005
Carlsbad	9.7	11.4	10.1	4%	-11%
Chula Vista	15.8	13.3	13.5	-15%	2%
Coronado	4.5	4.6	4.3	-4%	-7%
El Cajon	17.7	21.0	22.2	25%	6%
Escondido	16.4	17.4	18.1	10%	4%
La Mesa	11.5	12.7	12.8	11%	1%
National City	21.9	21.9	21.3	-3%	-3%
Oceanside	14.7	15.8	15.8	7%	<1%
San Diego	14.5	15.9	15.6	8%	-2%
Sheriff - Total	9.3	10.6	10.1	9%	-5%
Del Mar	8.2	4.5	6.5	-21%	44%
Encinitas	5.2	6.7	6.9	33%	3%
Imperial Beach	12.4	15.7	12.0	-3%	-24%
Lemon Grove	13.0	16.8	14.8	14%	-12%
Poway	5.5	5.9	6.5	18%	10%
San Marcos	11.2	9.1	8.6	-23%	-5%
Santee	8.7	9.7	9.6	10%	-1%
Solana Beach	3.8	6.3	4.9	29%	-22%
Vista	10.9	13.3	13.1	20%	-1%
Unincorporated	9.6	11.1	10.5	9%	-5%
TOTAL	13.5	14.6	14.3	6%	-2%

NOTES: The populations used to calculate arrest rates include individuals ten years and older (10-17 for juveniles and 18 and older for adults), based upon U.S. Census 2000 and current California Department of Finance updates.

SOURCES: California Department of Justice, Criminal Justice Statistics Center; U.S. Census Bureau, Census 2000; California Department of Finance, Revised E5 City/County Population Estimates, May 2006; SANDAG, Demographic/Economic Estimates August 2006

**Table 5
MISDEMEANOR ARREST RATES BY JURISDICTION
2001, 2004, and 2005**

	2001	2004	2005	Change	
				2001-2005	2004-2005
Carlsbad	23.1	21.7	22.0	-5%	1%
Chula Vista	17.1	13.3	14.1	-18%	6%
Coronado	16.9	14.6	14.1	-17%	-3%
El Cajon	31.9	37.8	39.4	24%	4%
Escondido	33.1	29.3	36.0	9%	23%
La Mesa	16.1	19.6	17.7	10%	-10%
National City	27.0	28.0	24.2	-10%	-14%
Oceanside	24.3	37.3	39.7	63%	6%
San Diego	34.0	35.2	30.6	-10%	-13%
Sheriff - Total	14.5	14.6	15.0	3%	3%
Del Mar	19.9	23.1	20.4	3%	-12%
Encinitas	18.0	16.7	16.9	-6%	1%
Imperial Beach	37.6	50.0	45.3	20%	-9%
Lemon Grove	13.3	17.0	18.8	41%	11%
Poway	12.5	12.8	13.7	10%	7%
San Marcos	17.2	15.5	13.5	-22%	-13%
Santee	18.8	17.5	20.1	7%	15%
Solana Beach	10.8	12.7	9.9	-8%	-22%
Vista	15.1	17.2	19.4	28%	13%
Unincorporated	11.9	11.0	11.5	-3%	5%
TOTAL	29.3	30.5	28.9	-1%	-5%

NOTES: The populations used to calculate arrest rates include individuals ten years and older (10-17 for juveniles and 18 and older for adults), based upon U.S. Census 2000 and current California Department of Finance updates.

SOURCES: California Department of Justice, Criminal Justice Statistics Center; U.S. Census Bureau, Census 2000; California Department of Finance, Revised E5 City/County Population Estimates, May 2006; SANDAG, Demographic/Economic Estimates August 2006

Table 6
TOTAL ARREST RATES, FIVE CALIFORNIA COUNTIES AND STATE OF CALIFORNIA
ADULTS AND JUVENILES
2001, 2004, and 2005

	2001	2004	2005	Change	
				2001-2005	2004-2005
Los Angeles					
Adult	40.8	44.2	44.9	10%	2%
Juvenile	48.6	43.1	44.9	-8%	4%
Total	41.9	44.1	44.9	7%	2%
Orange					
Adult	38.3	38.3	37.3	-3%	-3%
Juvenile	44.9	36.0	36.0	-20%	<1%
Total	39.2	38.0	37.1	-5%	-2%
Riverside					
Adult	40.0	38.4	39.1	-2%	2%
Juvenile	36.8	32.2	35.6	-3%	11%
Total	39.5	37.5	38.5	-3%	3%
San Diego					
Adult	41.9	45.2	43.5	4%	-4%
Juvenile	61.1	52.5	49.4	-19%	-6%
Total	44.5	46.2	44.3	<-1%	-4%
Santa Clara					
Adult	40.7	40.0	39.3	-3%	-2%
Juvenile	54.6	50.4	63.7	17%	26%
Total	42.4	41.3	42.4	<1%	3%
Statewide					
Adult	46.5	47.8	48.1	3%	1%
Juvenile	57.4	49.0	49.2	-14%	<1%
TOTAL	48.1	48.0	48.3	<1%	1%

NOTES: The populations used to calculate arrest rates include individuals ten years and older (10-17 for juveniles and 18 and older for adults), based upon the U.S. Census 2000 and current California Department of Finance updates. In 2004, the population of Riverside County surpassed that of San Bernardino; the current five most populated counties in California are those shown here.

SOURCES: California Department of Justice, Criminal Justice Statistics Center; California Department of Finance, "Race/Ethnic Population with Age and Sex Detail, 2000-2050," May 2006; U.S. Census 2000; California Department of Justice, Criminal Justice Statistics Center; SANDAG

**Table 7
ADULT ARREST RATES BY JURISDICTION
2001, 2004, and 2005**

	2001	2004	2005	Change	
				2001-2005	2004-2005
Carlsbad	30.0	30.0	31.7	6%	6%
Chula Vista	30.6	24.1	26.7	-13%	11%
Coronado	19.9	17.9	16.5	-17%	-8%
El Cajon	48.4	55.4	60.2	24%	9%
Escondido	49.5	46.6	54.1	9%	16%
La Mesa	24.9	30.7	29.9	20%	-3%
National City	48.9	48.8	45.3	-7%	-7%
Oceanside	39.5	55.1	58.6	48%	6%
San Diego	47.0	51.1	45.8	-3%	-10%
Sheriff - Total	22.3	24.4	24.3	9%	<-1%
Del Mar	28.4	27.9	28.3	<-1%	1%
Encinitas	22.3	23.1	22.0	-1%	-5%
Imperial Beach	49.1	64.8	57.2	17%	-12%
Lemon Grove	26.8	34.9	35.3	32%	1%
Poway	15.7	18.3	18.5	18%	1%
San Marcos	26.2	20.6	19.5	-26%	-5%
Santee	21.6	24.8	26.4	22%	6%
Solana Beach	14.8	19.1	14.8	<1%	-23%
Vista	25.2	30.2	32.3	28%	7%
Unincorporated	20.1	21.6	21.7	8%	<1%
TOTAL	41.9	45.2	43.5	4%	-4%

NOTES: Total includes felony and misdemeanor arrests. The populations used to calculate adult arrest rates include individuals 18 years and older and are based upon 2000 U.S. Census data and current California Department of Finance updates.

SOURCES: California Department of Justice, Criminal Justice Statistics Center; U.S. Census Bureau, Census 2000; California Department of Finance, Revised E5 City/County Population Estimates, May 2006; SANDAG, Demographic/Economic Estimates August 2006

Table 8
ADULT FELONY ARREST RATES BY JURISDICTION
2001, 2004, and 2005

	2001	2004	2005	Change	
				2001-2005	2004-2005
Carlsbad	9.2	10.6	10.2	11%	-4%
Chula Vista	15.6	12.6	13.4	-14%	6%
Coronado	4.3	4.3	4.3	0%	0%
El Cajon	17.6	20.9	22.7	29%	9%
Escondido	16.6	17.3	17.7	7%	2%
La Mesa	10.8	12.2	12.4	15%	2%
National City	21.8	22.5	22.0	1%	-2%
Oceanside	15.0	15.8	16.4	9%	4%
San Diego	13.9	16.1	15.8	14%	-2%
Sheriff - Total	8.7	10.6	9.9	14%	-7%
Del Mar	7.5	4.9	6.4	-15%	31%
Encinitas	5.0	6.8	6.1	22%	-10%
Imperial Beach	11.4	15.3	12.1	6%	-21%
Lemon Grove	13.1	17.0	16.0	22%	-6%
Poway	4.7	6.1	6.0	28%	-2%
San Marcos	9.8	8.0	8.0	-18%	0%
Santee	7.2	9.0	8.5	18%	-6%
Solana Beach	3.7	6.3	4.8	30%	-24%
Vista	10.2	13.3	12.7	25%	-5%
Unincorporated	9.2	11.2	10.7	16%	-4%
TOTAL	13.1	14.6	14.5	11%	-1%

NOTES: The populations used to calculate adult arrest rates include individuals 18 years and older based upon 2000 U.S. Census data and current California Department of Finance updates.

SOURCES: California Department of Justice, Criminal Justice Statistics Center; U.S. Census Bureau, Census 2000; California Department of Finance, Revised E5 City/County Population Estimates, May 2006; SANDAG, Demographic/Economic Estimates August 2006

Table 9
ADULT MISDEMEANOR ARREST RATES BY JURISDICTION
2001, 2004, and 2005

	2001	2004	2005	Change	
				2001-2005	2004-2005
Carlsbad	20.8	19.4	21.5	3%	11%
Chula Vista	15.0	11.6	13.3	-11%	15%
Coronado	15.6	13.6	12.2	-22%	-10%
El Cajon	30.7	34.5	37.5	22%	9%
Escondido	32.9	29.2	36.4	11%	25%
La Mesa	14.0	18.5	17.5	25%	-5%
National City	27.1	26.3	23.4	-14%	-11%
Oceanside	24.5	39.3	42.2	72%	7%
San Diego	33.1	35.0	30.0	-9%	-14%
Sheriff - Total	13.5	13.8	14.3	6%	4%
Del Mar	20.8	23.1	21.8	5%	-6%
Encinitas	17.3	16.3	16.0	-8%	-2%
Imperial Beach	37.6	49.6	45.1	20%	-9%
Lemon Grove	13.7	17.9	19.4	42%	8%
Poway	11.0	12.3	12.5	14%	2%
San Marcos	16.3	12.6	11.5	-29%	-9%
Santee	14.4	15.8	17.9	24%	13%
Solana Beach	11.1	12.8	10.0	-10%	-22%
Vista	15.0	16.9	19.6	31%	16%
Unincorporated	10.9	10.4	11.1	2%	7%
TOTAL	31.0	30.6	29.0	-6%	-5%

NOTES: The populations used to calculate adult arrest rates include individuals 18 years and older based upon 2000 U.S. Census data and current California Department of Finance updates.

SOURCES: California Department of Justice, Criminal Justice Statistics Center; U.S. Census Bureau, Census 2000; California Department of Finance, Revised E5 City/County Population Estimates, May 2006; SANDAG, Demographic/Economic Estimates August 2006

Table 10
JUVENILE ARREST RATES BY JURISDICTION
2001, 2004, and 2005

	2001	2004	2005	Change	
				2001-2005	2004-2005
Carlsbad	54.6	57.6	36.4	-33%	-37%
Chula Vista	57.9	47.8	43.6	-25%	-9%
Coronado	40.9	34.1	44.4	9%	30%
El Cajon	68.4	89.3	77.6	13%	-13%
Escondido	64.8	57.2	63.2	-2%	11%
La Mesa	66.1	57.4	40.4	-39%	-30%
National City	54.5	61.3	51.9	-5%	-15%
Oceanside	47.0	51.7	47.3	1%	-9%
San Diego	77.2	60.5	58.4	-24%	-3%
Sheriff - Total	41.4	35.4	34.0	-18%	-4%
Del Mar	n/a	n/a	n/a	--	--
Encinitas	37.0	29.3	42.9	16%	46%
Imperial Beach	73.8	81.8	64.5	-13%	-21%
Lemon Grove	25.7	36.5	28.2	10%	-23%
Poway	34.8	22.1	31.1	-11%	41%
San Marcos	53.3	55.4	42.1	-21%	-24%
Santee	75.1	47.4	58.1	-23%	23%
Solana Beach	n/a	n/a	n/a	--	--
Vista	40.8	36.7	38.8	-5%	6%
Unincorporated	36.5	30.6	26.9	-26%	-12%
TOTAL	61.1	52.5	49.4	-19%	-6%

NOTES: Total includes felony, misdemeanor, and status offense arrests. The populations used to calculate juvenile arrest rates include individuals 10-17 years of age based upon 2000 U.S. Census data and current California Department of Finance updates. Rates per 1,000 youth are not presented if either comparison number of arrests is 30 or less.

SOURCES: California Department of Justice, Criminal Justice Statistics Center; U.S. Census Bureau, Census 2000; California Department of Finance, Revised E5 City/County Population Estimates, May 2006; SANDAG, Demographic/Economic Estimates August 2006

**Table 11
JUVENILE FELONY ARREST RATES BY JURISDICTION
2001, 2004, and 2005**

	2001	2004	2005	Change	
				2001-2005	2004-2005
Carlsbad	13.7	17.2	9.9	-28%	-42%
Chula Vista	16.8	17.7	14.1	-16%	-20%
Coronado	n/a	n/a	n/a	--	--
El Cajon	17.9	21.7	18.8	5%	-13%
Escondido	15.2	17.5	20.6	36%	18%
La Mesa	17.8	17.1	15.7	-12%	-8%
National City	22.5	19.1	17.8	-21%	-7%
Oceanside	13.1	15.7	11.9	-9%	-24%
San Diego	18.5	14.8	14.2	-23%	-4%
Sheriff - Total	12.6	11.0	10.9	-13%	-1%
Del Mar	n/a	n/a	n/a	--	--
Encinitas	6.6	5.9	13.1	98%	--
Imperial Beach	17.8	18.4	11.6	-35%	-37%
Lemon Grove	12.1	15.7	8.3	-31%	-47%
Poway	9.2	5.0	8.6	-7%	72%
San Marcos	19.8	16.2	12.3	-38%	-24%
Santee	16.5	13.7	15.9	-4%	16%
Solana Beach	n/a	n/a	n/a	--	--
Vista	14.9	13.6	15.6	5%	15%
Unincorporated	11.8	10.2	9.2	-22%	-10%
TOTAL	16.0	14.5	13.5	-16%	-7%

NOTES: The populations used to calculate juvenile arrest rates include individuals 10-17 years of age based upon 2000 U.S. Census data and current California Department of Finance updates. Rates per 1,000 youth are not presented if either comparison number of arrests is 30 or less.

SOURCES: California Department of Justice, Criminal Justice Statistics Center; U.S. Census Bureau, Census 2000; California Department of Finance, Revised E5 City/County Population Estimates, May 2006; SANDAG, Demographic/Economic Estimates August 2006

Table 12
JUVENILE MISDEMEANOR ARREST RATES BY JURISDICTION
2001, 2004, and 2005

	2001	2004	2005	Change	
				2001-2005	2004-2005
Carlsbad	39.7	38.1	25.6	-36%	-33%
Chula Vista	28.8	22.6	18.7	-35%	-17%
Coronado	30.2	25.9	37.6	25%	45%
El Cajon	39.4	57.5	50.9	29%	-11%
Escondido	34.1	29.8	33.4	-2%	12%
La Mesa	34.7	29.2	19.9	-43%	-32%
National City	26.5	37.0	29.1	10%	-21%
Oceanside	23.1	25.9	25.1	9%	-3%
San Diego	40.9	36.3	34.5	-16%	-5%
Sheriff - Total	20.1	19.0	18.8	-6%	-1%
Del Mar	n/a	n/a	n/a	--	--
Encinitas	22.6	19.2	23.9	6%	24%
Imperial Beach	37.1	52.3	46.3	25%	-11%
Lemon Grove	11.2	12.2	15.7	40%	29%
Poway	19.2	15.1	20.1	5%	33%
San Marcos	22.7	32.9	25.3	11%	-23%
Santee	42.3	27.5	32.9	-22%	20%
Solana Beach	n/a	n/a	n/a	--	--
Vista	16.0	18.7	18.1	13%	-3%
Unincorporated	17.4	14.8	14.1	-19%	-5%
TOTAL	32.2	30.1	28.3	-12%	-6%

NOTES: The populations used to calculate juvenile arrest rates include individuals 10-17 years of age based upon 2000 U.S. Census data and current California Department of Finance updates. Rates per 1,000 youth are not presented if either comparison number of arrests is 30 or less.

SOURCES: California Department of Justice, Criminal Justice Statistics Center; U.S. Census Bureau, Census 2000; California Department of Finance, Revised E5 City/County Population Estimates, May 2006; SANDAG, Demographic/Economic Estimates August 2006

**Table 13
JUVENILE STATUS OFFENSE ARREST RATES BY JURISDICTION
2001, 2004, and 2005**

	2001	2004	2005	Change	
				2001-2005	2004-2005
Carlsbad	n/a	2.3	n/a	--	--
Chula Vista	12.4	7.5	10.8	-13%	44%
Coronado	n/a	n/a	n/a	--	--
El Cajon	11.1	10.1	7.9	--	--
Escondido	15.5	9.9	9.2	-41%	-7%
La Mesa	13.6	11.1	n/a	--	--
National City	5.5	5.2	5.0	-9%	-4%
Oceanside	10.8	10.0	10.2	-6%	2%
San Diego	17.8	9.5	9.6	-46%	1%
Sheriff - Total	8.7	5.4	4.3	-51%	-20%
Del Mar	n/a	n/a	n/a	--	--
Encinitas	7.8	n/a	5.9	-24%	--
Imperial Beach	19.0	11.1	6.6	-65%	-41%
Lemon Grove	n/a	n/a	n/a	--	--
Poway	6.5	1.9	n/a	--	--
San Marcos	10.8	6.3	4.5	-58%	-29%
Santee	16.4	6.2	9.3	-43%	50%
Solana Beach	n/a	n/a	n/a	--	--
Vista	9.9	4.4	5.2	-47%	18%
Unincorporated	7.3	5.5	3.6	-51%	-35%
TOTAL	12.9	7.8	7.6	-41%	-3%

NOTES: Status includes truancy, runaway, curfew violations, incorrigible behavior, and other juvenile-specific offenses (e.g., failure to obey orders of the Juvenile Court and running away from court-ordered placement). The populations used to calculate juvenile arrest rates include individuals 10-17 years of age based upon 2000 U.S. Census data and current California Department of Finance updates. Rates per 1,000 youth are not presented if either comparison number of arrests is 30 or less.

SOURCES: California Department of Justice, Criminal Justice Statistics Center; U.S. Census Bureau, Census 2000; California Department of Finance, Revised E5 City/County Population Estimates, May 2006; SANDAG, Demographic/Economic Estimates August 2006

Table 14
NUMBER OF ADULT ARRESTS BY JURISDICTION
2001, 2004, and 2005

	2001	2004	2005	Change	
				2001-2005	2004-2005
Carlsbad	1,903	2,118	2,289	20%	8%
Chula Vista	3,978	3,619	4,149	4%	15%
Coronado	397	398	374	-6%	-6%
El Cajon	3,360	3,891	4,220	26%	8%
Escondido	4,737	4,624	5,375	13%	16%
La Mesa	1,099	1,358	1,318	20%	-3%
National City	1,928	2,090	2,099	9%	<1%
Oceanside	4,690	6,806	7,281	55%	7%
San Diego	44,413	50,262	45,393	2%	-10%
Sheriff - Total	12,912	15,007	15,121	17%	1%
Del Mar	109	109	110	1%	1%
Encinitas	1,014	1,123	1,077	6%	-4%
Imperial Beach	958	1,299	1,144	19%	-12%
Lemon Grove	488	649	653	34%	1%
Poway	539	675	689	28%	2%
San Marcos	1,086	997	1,020	-6%	2%
Santee	837	988	1,069	28%	8%
Solana Beach	160	210	163	2%	-22%
Vista	1,634	2,033	2,168	33%	7%
Unincorporated	6,087	6,924	7,028	15%	2%
San Diego Harbor Police	1,218	1,426	1,357	11%	-5%
California Highway Patrol	7,366	8,822	8,456	15%	-4%
California State University San Marcos	5	84	76	--	-10%
San Diego State University	655	742	680	4%	-8%
University of California San Diego	120	227	192	60%	-15%
State Parks and Recreation	532	241	494	-7%	105%
TOTAL	89,313	101,715	98,874	11%	-3%

NOTES: Total includes felony and misdemeanor arrests. Percent changes are not presented when either comparison number equals 30 or less.

SOURCES: California Department of Justice, Criminal Justice Statistics Center; SANDAG

Table 15
NUMBER OF ADULT FELONY ARRESTS, BY OFFENSE TYPE AND JURISDICTION
San Diego Region, 2005

	Homicide	Rape	Robbery	Aggravated Assault	Weapons Offenses	Burglary	Larceny	Motor Vehicle Theft	Drug Law Violations	Driving Under the Influence	Other	TOTAL
Carlsbad	0	0	14	138	13	106	102	29	256	10	66	734
Chula Vista	3	19	71	463	94	308	302	109	516	25	169	2,079
Coronado	0	2	4	13	3	19	12	5	21	4	14	97
El Cajon	6	5	36	271	69	189	175	95	623	2	123	1,594
Escondido	4	3	47	418	70	179	160	75	442	47	310	1,755
La Mesa	1	2	24	130	12	64	68	36	102	5	103	547
National City	3	1	30	255	42	129	121	80	234	11	111	1,017
Oceanside	3	4	50	623	80	198	161	65	618	54	181	2,037
San Diego	55	53	371	3,139	498	1,166	1,211	675	6,425	29	2,012	15,634
Sheriff - Total	9	29	134	1,456	220	928	615	391	1,716	30	665	6,193
Del Mar	0	0	2	4	0	6	1	1	3	0	8	25
Encinitas	1	1	8	50	10	41	26	10	103	6	40	296
Imperial Beach	0	2	3	78	8	26	13	16	68	4	24	242
Lemon Grove	0	2	9	49	13	66	26	22	80	2	26	295
Poway	0	1	9	52	3	30	27	11	69	1	22	225
San Marcos	1	1	9	84	27	77	67	28	96	1	28	419
Santee	0	2	7	96	21	64	37	20	70	1	26	344
Solana Beach	0	0	5	6	1	7	9	2	15	0	8	53
Vista	1	5	22	196	22	148	63	52	254	4	85	852
Unincorporated	6	15	60	841	115	463	346	229	958	11	398	3,442
San Diego Harbor Police	0	0	3	29	13	13	18	5	110	2	24	217
California Highway Patrol	5	0	1	55	9	2	37	245	111	272	130	867
California State University San Marcos	0	0	0	1	1	0	1	0	7	0	0	10
San Diego State University	0	0	4	3	12	5	10	0	43	0	6	83
University of California San Diego	0	0	1	1	1	5	9	6	1	0	0	24
State Parks and Recreation	0	0	0	1	2	0	3	0	3	0	2	11
TOTAL	89	118	790	6,996	1,139	3,311	3,005	1,816	11,228	491	3,916	32,899

NOTES: Homicide includes manslaughter (vehicular and non-vehicular). Other felony offenses include: kidnapping, forgery/checks/access cards, other theft-related offenses, arson, lewd conduct and other sex-related crimes, hit-and-run, and escape, bookmaking, and other felonies.

SOURCES: California Department of Justice, Criminal Justice Statistics Center; SANDAG

**Table 16
NUMBER OF ADULT MISDEMEANOR ARRESTS BY OFFENSE TYPE AND JURISDICTION
San Diego Region, 2005**

	Manslaughter/ Assault and Battery	Weapons Offenses	Misd. Burglary	Petty Theft	Vandalism	Drug Law Violations	Drunk/ Liquor Laws	Driving Under the Influence	Prostitution	Other	TOTAL
Carlsbad	145	5	0	105	10	235	592	342	3	118	1,555
Chula Vista	351	14	0	201	44	397	222	480	2	359	2,070
Coronado	19	0	0	15	2	28	64	113	0	36	277
El Cajon	222	14	0	160	17	923	441	247	46	556	2,626
Escondido	290	10	0	208	24	766	608	973	14	727	3,620
La Mesa	116	1	0	78	5	94	115	204	4	154	771
National City	130	2	0	175	12	271	198	110	57	127	1,082
Oceanside	400	14	0	271	26	840	1,179	653	137	1,724	5,244
San Diego	2,939	77	5	1,118	262	7,557	3,982	3,882	673	9,264	29,759
Sheriff - Total	1,316	29	0	398	64	1,802	2,375	1,477	15	1,452	8,928
Del Mar	12	0	0	0	0	4	27	34	0	8	85
Encinitas	84	0	0	16	4	75	262	293	0	47	781
Imperial Beach	50	2	0	5	4	94	231	161	0	355	902
Lemon Grove	49	2	0	10	3	80	95	64	0	55	358
Poway	50	3	0	30	2	91	97	133	0	58	464
San Marcos	95	2	0	114	7	86	136	119	1	41	601
Santee	102	1	0	27	6	121	163	138	0	167	725
Solana Beach	14	1	0	2	0	18	31	31	0	13	110
Vista	156	2	0	92	4	327	393	202	13	127	1,316
Unincorporated	704	16	0	102	34	906	940	302	1	581	3,586
San Diego Harbor Police	56	102	1	25	5	308	73	111	0	459	1,140
California Highway Patrol	33	6	0	0	9	63	5	7,069	0	404	7,589
California State University San Marcos	1	0	0	1	0	12	19	27	0	6	66
San Diego State University	21	6	0	57	8	155	195	86	0	69	597
University of California San Diego	7	2	0	12	0	13	52	30	0	52	168
California State Parks and Recreation	8	2	0	9	1	32	87	47	0	297	483
TOTAL	6,054	284	6	2,833	489	13,496	10,207	15,851	951	15,804	65,975

NOTES: Misdemeanor drug law violations include glue sniffing. Other misdemeanors include: check/access cards, other theft-related offenses, annoying a child, obscene matter, lewd conduct and other sex-related crimes, contributing to the delinquency of a minor, hit-and-run and other selected traffic offenses, and other misdemeanors.

SOURCES: California Department of Justice, Criminal Justice Statistics Center; SANDAG

**Table 17
NUMBER OF ADULT FELONY ARRESTS BY OFFENSE TYPE AND JURISDICTION
San Diego Region, 2004**

	Homicide	Rape	Robbery	Aggravated Assault	Weapons Offenses	Burglary	Larceny	Motor Vehicle Theft	Drug Law Violations	Driving Under the Influence	Other	TOTAL
Carlsbad	1	3	10	165	12	110	110	19	254	15	47	746
Chula Vista	3	5	63	449	80	287	284	93	410	28	182	1,884
Coronado	0	1	2	22	2	16	10	7	25	2	9	96
El Cajon	7	5	23	250	57	147	210	110	535	6	118	1,468
Escondido	1	2	61	451	53	155	183	121	364	32	298	1,721
La Mesa	0	2	19	147	12	89	67	29	88	5	80	538
National City	3	7	25	233	31	145	138	69	169	11	132	963
Oceanside	9	11	93	589	77	217	181	61	487	47	178	1,950
San Diego	69	49	337	3,257	461	1,155	1,428	761	6,478	37	1,792	15,824
Sheriff - Total	12	27	160	1,521	264	923	627	410	1,635	39	884	6,502
Del Mar	0	0	0	5	0	2	2	1	2	1	6	19
Encinitas	0	1	8	66	11	49	40	8	97	7	43	330
Imperial Beach	0	0	13	97	25	19	11	14	69	0	58	306
Lemon Grove	1	2	5	73	18	74	25	15	56	1	46	316
Poway	0	0	0	35	8	38	36	4	76	6	20	223
San Marcos	1	1	7	92	15	66	41	15	90	4	54	386
Santee	1	0	8	84	20	69	32	15	78	3	49	359
Solana Beach	0	0	3	13	3	16	3	0	13	0	18	69
Vista	1	3	30	184	43	133	49	54	261	6	129	893
Unincorporated	8	20	86	872	121	457	388	284	893	11	461	3,601
San Diego Harbor Police	1	0	2	24	14	8	18	6	121	0	21	215
California Highway Patrol	9	0	1	73	14	1	36	214	149	264	105	866
California State University San Marcos	0	0	0	1	1	0	2	0	0	0	1	5
San Diego State University	0	1	1	16	10	7	8	4	54	0	11	112
University of California San Diego	0	0	0	2	3	8	6	3	10	0	4	36
State Parks and Recreation	0	0	2	0	1	2	1	1	0	0	3	10
TOTAL	115	113	799	7,200	1,092	3,270	3,309	1,908	10,779	486	3,865	32,936

NOTES: Homicide includes manslaughter (vehicular and non-vehicular). Other felony offenses include: kidnapping, forgery/checks/access cards, other theft-related offenses, arson, lewd conduct and other sex-related crimes, hit-and-run, and escape, bookmaking, and other felonies.

SOURCES: California Department of Justice, Criminal Justice Statistics Center; SANDAG

Table 18
NUMBER OF ADULT MISDEMEANOR ARRESTS BY OFFENSE TYPE AND JURISDICTION
San Diego Region, 2004

	Manslaughter/ Assault and Battery	Weapons Offenses	Misd. Burglary	Petty Theft	Vandalism	Drug Law Violations	Drunk/ Liquor Laws	Driving Under the Influence	Prostitution	Other	TOTAL
Carlsbad	102	8	0	143	4	268	356	308	9	174	1,372
Chula Vista	305	3	0	256	49	307	183	318	2	312	1,735
Coronado	18	0	0	24	0	52	42	126	0	40	302
El Cajon	222	11	0	191	10	777	352	251	69	540	2,423
Escondido	319	6	0	197	21	575	456	660	12	657	2,903
La Mesa	132	1	0	84	6	98	127	209	25	138	820
National City	119	9	0	196	10	261	236	114	81	101	1,127
Oceanside	375	16	0	252	27	719	1,189	748	138	1,392	4,856
San Diego	3,032	75	0	1,278	219	8,305	4,597	4,280	729	11,923	34,438
Sheriff - Total	1,206	33	0	358	111	1,558	2,183	1,657	2	1,397	8,505
Del Mar	9	0	0	1	1	1	28	46	0	4	90
Encinitas	73	2	0	20	6	66	253	344	0	29	793
Imperial Beach	68	3	0	5	4	103	314	151	0	345	993
Lemon Grove	66	0	0	25	4	67	72	66		33	333
Poway	49	0	0	34	7	107	58	146	0	51	452
San Marcos	75	3	0	61	12	91	116	215	0	38	611
Santee	84	1	0	35	10	88	113	114	0	184	629
Solana Beach	20	0	0	0	0	8	36	68	0	9	141
Vista	156	0	0	55	8	276	319	221	1	104	1,140
Unincorporated	606	24	0	122	59	751	874	286	1	600	3,323
San Diego Harbor Police	53	73	1	22	4	376	72	178	0	432	1,211
California Highway Patrol	41	7	0	0	6	90	9	7,430	0	373	7,956
California State University San Marcos	0	2	1	1	3	8	31	26	0	7	79
San Diego State University	25	2	1	50	6	119	226	120	0	81	630
University of California San Diego	9	0	0	19	0	16	45	50	0	52	191
State Parks and Recreation	16	0	0	2	8	23	85	38	0	59	231
TOTAL	5,974	246	3	3,073	484	13,552	10,189	16,513	1,067	17,678	68,779

NOTES: Misdemeanor drug law violations include glue sniffing. Other misdemeanors include: check/access cards, other theft-related offenses, annoying a child, obscene matter, lewd conduct and other sex-related crimes, contributing to the delinquency of a minor, hit-and-run and other selected traffic offenses, and other misdemeanors.

SOURCES: California Department of Justice, Criminal Justice Statistics Center; SANDAG

Table 19
NUMBER OF ADULT FELONY ARRESTS BY OFFENSE TYPE AND JURISDICTION
San Diego Region, 2001

	Homicide	Rape	Robbery	Aggravated Assault	Weapons Offenses	Burglary	Larceny	Motor Vehicle Theft	Drug Law Violations	Driving Under the Influence	Other	TOTAL
Carlsbad	2	6	15	91	15	64	86	14	219	2	68	582
Chula Vista	3	14	63	466	106	233	243	88	584	26	201	2,027
Coronado	0	0	1	24	5	6	9	3	18	6	13	85
El Cajon	3	6	37	318	66	131	140	30	372	4	117	1,224
Escondido	1	7	62	456	59	158	164	58	372	14	240	1,591
La Mesa	0	2	26	130	10	78	52	14	95	6	66	479
National City	0	3	35	241	34	95	127	14	193	11	107	860
Oceanside	2	4	55	659	74	172	163	15	461	37	137	1,779
San Diego	40	77	387	3,565	343	992	1,175	376	4,846	32	1,308	13,141
Sheriff - Total	3	30	151	1,454	180	698	624	140	1,253	29	491	5,053
Del Mar	0	0	0	12	1	1	4	1	8	0	2	29
Encinitas	0	4	4	51	12	37	22	3	58	4	31	226
Imperial Beach	0	1	3	73	5	25	25	5	67	2	17	223
Lemon Grove	0	1	5	46	12	41	23	9	75	3	24	239
Poway	1	2	1	32	6	25	22	2	49	2	18	160
San Marcos	0	4	8	134	10	65	41	5	115	1	25	408
Santee	0	0	6	64	12	48	47	3	70	3	27	280
Solana Beach	0	0	1	14	2	6	4	1	7	2	3	40
Vista	0	3	33	190	26	84	78	13	185	4	48	664
Unincorporated	2	15	90	838	94	366	358	98	619	8	296	2,784
San Diego Harbor Police	0	0	0	12	11	7	15	8	94	8	17	172
California Highway Patrol	10	0	2	94	14	2	55	149	123	249	75	773
California State University San Marcos	0	0	0	0	0	0	0	0	1	0	0	1
San Diego State University	0	0	3	3	3	9	11	3	20	0	3	55
University of California San Diego	0	0	0	5	0	6	4	0	3	0	1	19
State Parks and Recreation	0	0	0	6	0	0	0	3	8	0	1	18
TOTAL	64	149	837	7,524	920	2,651	2,868	915	8,662	424	2,845	27,859

NOTES: Homicide includes manslaughter (vehicular and non-vehicular). Other felony offenses include: kidnapping, forgery/checks/access cards, other theft-related offenses, arson, lewd conduct and other sex-related crimes, hit-and-run, and escape, bookmaking, and other felonies.

SOURCES: California Department of Justice, Criminal Justice Statistics Center; SANDAG

Table 20
NUMBER OF ADULT MISDEMEANOR ARRESTS BY OFFENSE TYPE AND JURISDICTION
San Diego Region, 2001

	Manslaughter/ Assault and Battery	Weapons Offenses	Petty Theft	Vandalism	Drug Law Violations	Drunk/ Liquor Laws	Driving Under the Influence	Prostitution	Other	TOTAL
Carlsbad	119	3	116	13	210	326	303	12	219	1,321
Chula Vista	355	12	246	43	401	238	329	14	313	1,951
Coronado	12	0	4	0	26	42	183	0	45	312
El Cajon	267	6	143	16	536	408	292	60	408	2,136
Escondido	357	4	166	21	541	727	686	5	639	3,146
La Mesa	137	0	50	6	82	137	108	5	95	620
National City	101	3	57	11	224	268	222	83	99	1,068
Oceanside	284	9	157	22	576	265	508	74	1,016	2,911
San Diego	2,974	66	1,266	330	6,870	4,772	4,120	865	10,009	31,272
Sheriff - Total	1,160	24	289	81	1,144	2,284	1,533	0	1,344	7,859
Del Mar	11	0	5	0	7	36	19	0	2	80
Encinitas	86	2	22	7	67	245	282	0	77	788
Imperial Beach	87	2	3	3	53	305	111	0	171	735
Lemon Grove	34	0	3	4	31	64	91	0	22	249
Poway	50	0	28	2	47	75	121	0	56	379
San Marcos	75	3	12	5	142	177	199	0	65	678
Santee	92	1	63	5	90	100	89	0	117	557
Solana Beach	10	0	4	1	7	41	52	0	5	120
Vista	160	0	45	8	117	319	258	0	63	970
Unincorporated	555	16	104	46	583	922	311	0	766	3,303
San Diego Harbor Police	45	17	21	4	272	86	107	0	494	1,046
California Highway Patrol	40	16	2	13	66	10	6,087	0	359	6,593
California State University San Marcos	0	0	0	0	0	0	4	0	0	4
San Diego State University	15	1	28	9	93	285	99	0	70	600
University of California San Diego	6	0	8	1	8	27	12	0	39	101
State Parks and Recreation	16	1	4	1	30	178	42	0	242	514
TOTAL	5,888	162	2,557	571	11,079	10,053	14,635	1,118	15,391	61,454

NOTES: Misdemeanor drug law violations include glue sniffing. Other misdemeanors include: check/access cards, other theft-related offenses, annoying a child, obscene matter, lewd conduct and other sex-related crimes, contributing to the delinquency of a minor, hit-and-run and other selected traffic offenses, and other misdemeanors.

SOURCES: California Department of Justice, Criminal Justice Statistics Center; SANDAG

Table 21
NUMBER OF ADULT ARRESTS BY TYPE
2001, 2004, and 2005

	2,001	2,004	2,005	Change	
				2001-2005	2004-2005
Violent	14,462	14,201	14,047	-3%	-1%
Property	8,991	11,563	10,971	22%	-5%
Alcohol/Drug Violations	44,853	51,519	51,273	14%	<-1%
Weapons Offenses	1,082	1,338	1,423	32%	6%
Other	19,925	23,094	21,160	6%	-8%
TOTAL	89,313	101,715	98,874	11%	-3%

NOTES: Violent includes homicide/manslaughter, rape, robbery, aggravated assault, and misdemeanor manslaughter and assault and battery. Property includes grand theft, felony and misdemeanor burglary, motor vehicle theft, and petty theft. Alcohol/drug includes driving-under-the-influence and drunk/liquor laws. Other includes other theft-related offenses, kidnapping, sex crimes, hit-and-run, violations of city and county ordinances, and other offenses.

SOURCES: California Department of Justice, Criminal Justice Statistics Center; SANDAG

Table 22
NUMBER OF ADULT ARRESTS FOR VIOLENT OFFENSES BY TYPE
2001, 2004, and 2005

	2001	2004	2005	Change	
				2001-2005	2004-2005
Felony					
Homicide	64	115	89	39%	-23%
Rape	149	113	118	-21%	4%
Robbery	837	799	790	-6%	-1%
Aggravated Assault	7,524	7,200	6,996	-7%	-3%
Total	8,574	8,227	7,993	-7%	-3%
Misdemeanor					
Manslaughter/ Assault & Battery	5,888	5,974	6,054	3%	1%
TOTAL	14,462	14,201	14,047	-3%	-1%

NOTES: Homicide includes felony manslaughter (vehicular and non-vehicular).

SOURCES: California Department of Justice, Criminal Justice Statistics Center; SANDAG

Table 23
NUMBER OF ADULT ARRESTS FOR PROPERTY OFFENSES BY TYPE
2001, 2004, and 2005

	2001	2004	2005	Change	
				2001-2005	2004-2005
Felony					
Burglary	2,651	3,270	3,311	25%	1%
Larceny Theft	2,868	3,309	3,005	5%	-9%
Motor Vehicle Theft	915	1,908	1,816	98%	-5%
Total	6,434	8,487	8,132	26%	-4%
Misdemeanor					
Petty Theft/Burglary	2,557	3,076	2,839	11%	-8%
TOTAL	8,991	11,563	10,971	22%	-5%

SOURCES: California Department of Justice, Criminal Justice Statistics Center; SANDAG

Table 24
NUMBER OF ADULT ARRESTS FOR ALCOHOL- AND DRUG-RELATED OFFENSES BY TYPE
2001, 2004, and 2005

	2001	2004	2005	Change	
				2001-2005	2004-2005
Felony					
Narcotics	2,553	3,022	3,038	19%	1%
Marijuana	701	771	756	8%	-2%
Dangerous Drugs	5,264	6,901	7,374	40%	7%
Other Drug Offenses	124	85	60	-52%	-29%
Driving Under the Influence	424	486	491	16%	1%
Total	9,066	11,265	11,719	29%	4%
Misdemeanor					
Marijuana	3,472	3,566	3,386	-2%	-5%
Other Drug Offenses	7,607	9,986	10,110	33%	1%
Drunk	7,672	7,895	8,413	10%	7%
Liquor Laws	2,381	2,294	1,794	-25%	-22%
Driving Under the Influence	14,635	16,513	15,851	8%	-4%
Total	35,767	40,254	39,554	11%	-2%
TOTAL	44,833	51,519	51,273	14%	<-1%

NOTES: Narcotics include heroin, morphine, cocaine/rock, and barbiturates. Dangerous drugs include methamphetamine, depressants, and hallucinogens. Other drug offenses include illegal possession of drug paraphernalia, use of illegal prescriptions and prescription drugs, sale of chemicals used to produce drugs, under the influence, and other drug-related crimes. Other misdemeanor drug offenses include glue sniffing.

SOURCES: California Department of Justice, Criminal Justice Statistics Center; SANDAG

Table 25
NUMBER OF ADULT ARRESTS FOR WEAPONS VIOLATIONS
2001, 2004, and 2005

	2001	2004	2005	Change	
				2001-2005	2004-2005
Adult					
Felony	920	1,092	1,139	24%	4%
Misdemeanor	162	246	284	75%	15%
TOTAL	1,082	1,338	1,423	32%	6%

SOURCES: California Department of Justice, Criminal Justice Statistics Center; SANDAG

Table 26
NUMBER OF ADULT FELONY AND MISDEMEANOR ARRESTS
FOR "OTHER" OFFENSES BY TYPE
2001, 2004, and 2005

	2001	2004	2005	Change	
				2001-2005	2004-2005
Felony - Other					
Sex-Related	405	728	641	58%	-12%
Forgery/Checks	792	878	676	-15%	-23%
Arson	45	48	54	20%	13%
Other Felonies	1,603	2,211	2,545	59%	15%
Total	2,845	3,865	3,916	38%	1%
Misdemeanor - Other					
Other Theft/Checks/Access Cards	402	499	545	36%	9%
Sex-Related	538	342	288	-46%	-16%
Prostitution	1,118	1,067	951	-15%	-11%
Disturb Peace/Trespass/Disorderly	2,714	5,251	4,218	55%	-20%
Vandalism/Graffiti	571	484	489	-14%	1%
Hit-and-Run	318	347	429	35%	24%
Selected Traffic	1,099	1,063	1,015	-8%	-5%
City/County Ordinances	6,200	5,748	4,671	-25%	-19%
Failure to Appear/Non Traffic	1,390	1,297	1,407	1%	8%
Other Misdemeanors	2,732	3,131	3,231	18%	3%
Total	17,086	19,229	17,244	1%	-10%
TOTAL	19,925	23,094	21,160	6%	-8%

NOTES: Sex-related includes lewd behavior, indecent exposure, annoying a child, obscene matter, and other sex offenses. Selected traffic includes driving without insurance or license, equipment violations, and others. City and county ordinances include loitering, littering, and other codes specific to cities/county. Other felony and misdemeanor arrests include felony kidnapping and other felonies, and misdemeanor contributing to the delinquency of a minor, malicious mischief, joyriding, gambling, and nonsupport as well as various election, building, fire, and water code violations.

SOURCES: California Department of Justice, Criminal Justice Statistics Center; SANDAG

Table 27
NUMBER OF JUVENILE ARRESTS BY JURISDICTION
2001, 2004, and 2005

	2001	2004	2005	Change	
				2001-2005	2004-2005
Carlsbad	477	580	376	-21%	-35%
Chula Vista	1,348	1,285	1,191	-12%	-7%
Coronado	76	66	84	11%	27%
El Cajon	767	1,060	925	21%	-13%
Escondido	1,085	1,056	1,177	8%	11%
La Mesa	320	289	203	-37%	-30%
National City	405	504	417	3%	-17%
Oceanside	927	1,106	1,009	9%	-9%
San Diego	9,915	8,364	8,016	-19%	-4%
Sheriff - Total	4,156	3,702	3,517	-15%	-5%
Del Mar	10	8	2	--	--
Encinitas	237	194	278	17%	43%
Imperial Beach	253	280	216	-15%	-23%
Lemon Grove	85	123	95	12%	-23%
Poway	269	171	234	-13%	37%
San Marcos	350	456	376	7%	-18%
Santee	542	329	395	-27%	20%
Solana Beach	17	23	18	--	--
Vista	466	440	462	-1%	5%
Unincorporated	1,927	1,678	1,441	-25%	-14%
San Diego Harbor Police	57	61	43	-25%	-30%
California Highway Patrol	139	105	46	-67%	-56%
California State University San Marcos	1	5	3	--	--
San Diego State University	34	50	54	59%	8%
University of California San Diego	8	9	16	--	--
State Parks and Recreation	88	40	51	-42%	--
TOTAL	19,803	18,282	17,128	-14%	-6%

NOTES: Total includes felony, misdemeanor, and status offense arrests. Percent changes are not presented when either comparison number equals 30 or less.

SOURCES: California Department of Justice, Criminal Justice Statistics Center; SANDAG

**Table 28
NUMBER OF JUVENILE FELONY ARRESTS BY OFFENSE TYPE AND JURISDICTION
San Diego Region, 2005**

	Homicide	Rape	Robbery	Aggravated Assault	Weapons Offenses	Burglary	Larceny	Motor Vehicle Theft	Drug Law Violations	Driving Under the Influence	Other	TOTAL
Carlsbad	0	0	4	9	13	34	10	2	6	0	24	102
Chula Vista	0	0	26	39	70	139	32	9	21	0	50	386
Coronado	0	0	0	2	0	5	1	0	1	0	1	10
El Cajon	0	0	10	37	33	44	30	21	22	0	27	224
Escondido	0	0	15	34	58	70	44	50	23	0	89	383
La Mesa	0	0	12	12	7	21	6	6	7	0	8	79
National City	0	0	15	22	13	55	10	8	15	0	5	143
Oceanside	2	0	27	38	37	61	15	18	21	1	35	255
San Diego	5	2	141	332	250	424	159	193	142	1	303	1,952
Sheriff - Total	0	6	62	210	141	286	86	63	97	0	174	1,125
Del Mar	0	0	0	1	0	1	0	0	0	0	0	2
Encinitas	0	1	3	6	14	26	7	2	15	0	11	85
Imperial Beach	0	0	4	13	6	6	0	2	2	0	6	39
Lemon Grove	0	1	1	7	5	6	1	2	1	0	4	28
Poway	0	1	0	9	5	22	9	0	9	0	10	65
San Marcos	0	0	2	12	25	31	7	7	10	0	16	110
Santee	0	0	1	31	5	32	14	2	10	0	13	108
Solana Beach	0	0	2	2	1	1	1	0	0	0	0	7
Vista	0	1	23	28	15	68	5	15	10	0	20	185
Unincorporated	0	2	26	101	65	93	42	33	40	0	94	496
San Diego Harbor Police	0	0	1	0	0	0	1	1	1	0	0	4
California Highway Patrol	0	0	0	0	0	0	1	8	0	0	2	11
California State University San Marcos	0	0	0	0	0	0	0	0	0	0	0	0
San Diego State University	0	0	0	0	3	0	0	0	0	0	0	3
University of California San Diego	0	0	0	0	0	1	0	1	0	0	0	2
State Parks and Recreation	0	0	0	0	0	0	0	1	0	0	0	1
TOTAL	7	8	313	735	625	1,140	395	381	356	2	718	4,680

NOTES: Homicide includes manslaughter (vehicular and non-vehicular). Other felony offenses include: kidnapping, forgery/checks/access cards, other theft-related offenses, arson, lewd conduct and other sex-related crimes, hit-and-run, and escape, bookmaking, and other felonies.

SOURCES: California Department of Justice, Criminal Justice Statistics Center; SANDAG

**Table 29
NUMBER OF JUVENILE MISDEMEANOR AND STATUS ARRESTS BY OFFENSE TYPE AND JURISDICTION
San Diego Region, 2005**

	Manslaughter/ Assault and Battery	Weapons Offenses	Misd. Burglary	Petty Theft	Vandalism	Drug Law Violations	Drunk/ Liquor Laws	Driving Under the Influence	Prostitution	Other	Total Misd.	Status	TOTAL
Carlsbad	26	2	0	88	13	47	29	5	0	54	264	10	274
Chula Vista	82	4	0	139	64	76	30	7	0	108	510	295	805
Coronado	6	0	0	8	3	11	18	2	0	23	71	3	74
El Cajon	115	9	0	168	20	99	56	5	1	134	607	94	701
Escondido	85	6	0	161	49	100	40	10	0	172	623	171	794
La Mesa	15	0	0	60	4	10	2	3	0	6	100	24	124
National City	37	2	0	100	16	26	21	0	10	22	234	40	274
Oceanside	67	6	0	205	33	127	42	8	5	43	536	218	754
San Diego	716	32	4	610	242	517	334	31	37	2,216	4,739	1,325	6,064
Sheriff - Total	431	22	0	220	129	354	188	39	0	561	1,944	448	2,392
Del Mar	0	0	0	0	0	0	0	0	0	0	0	0	0
Encinitas	22	3	0	15	3	28	27	13	0	44	155	38	193
Imperial Beach	26	0	0	2	19	36	16	2	0	54	155	22	177
Lemon Grove	12	4	0	0	9	10	8	1	0	9	53	14	67
Poway	16	0	0	42	10	23	23	4	0	33	151	18	169
San Marcos	47	2	0	44	25	25	8	2	0	73	226	40	266
Santee	53	1	0	19	8	27	16	3	0	97	224	63	287
Solana Beach	2	0	0	2	0	4	0	0	0	3	11	0	11
Vista	39	2	0	48	17	33	18	8	0	50	215	62	277
Unincorporated	214	10	0	48	38	168	72	6	0	198	754	191	945
San Diego Harbor Police	2	2	0	1	0	5	2	2	0	22	36	3	39
California Highway Patrol	0	1	0	0	0	1	0	23	0	10	35	0	35
California State University San Marcos	0	0	0	0	0	2	0	1	0	0	3	0	3
San Diego State University	0	1	0	5	1	11	10	2	0	20	50	1	51
University of California San Diego	0	1	0	4	0	3	4	0	0	0	12	2	14
California State Parks and Recreation	2	0	0	0	0	3	22	0	0	23	50	0	50
TOTAL	1,584	88	4	1,769	574	1,392	798	138	53	3,414	9,814	2,634	12,448

NOTES: Misdemeanor drug law violations include glue sniffing. Other misdemeanors include: check/access cards, other theft-related offenses, annoying a child, obscene matter, lewd conduct and other sex-related crimes, contributing to the delinquency of a minor, hit-and-run and other selected traffic offenses, and other misdemeanors. Status includes truancy, runaway, curfew violations, incorrigible behavior, and other juvenile-specific offenses (e.g., failure to obey orders of the Juvenile Court and running away from court-ordered placement).

SOURCES: California Department of Justice, Criminal Justice Statistics Center; SANDAG

**Table 30
NUMBER OF JUVENILE FELONY ARRESTS BY OFFENSE TYPE AND JURISDICTION
San Diego Region, 2004**

	Homicide	Rape	Robbery	Aggravated Assault	Weapons Offenses	Burglary	Larceny	Motor Vehicle Theft	Drug Law Violations	Driving Under the Influence	Other	TOTAL
Carlsbad	0	0	6	21	8	66	27	13	15	0	17	173
Chula Vista	0	2	37	60	55	147	30	35	26	2	82	476
Coronado	0	0	0	1	1	7	5	1	1	0	0	16
El Cajon	0	0	28	48	43	36	28	17	22	1	34	257
Escondido	0	0	26	43	63	62	26	26	24	2	51	323
La Mesa	0	0	11	12	6	23	10	8	3	0	13	86
National City	0	0	7	20	18	49	19	14	12	0	18	157
Oceanside	1	4	32	48	37	95	28	20	34	1	36	336
San Diego	8	6	162	345	255	462	143	198	158	0	303	2,040
Sheriff - Total	1	2	54	217	153	294	86	85	100	1	161	1,154
Del Mar	0	0	0	0	0	0	0	0	0	0	0	0
Encinitas	0	0	0	3	3	20	1	3	5	0	4	39
Imperial Beach	0	0	4	13	9	16	4	5	2	0	10	63
Lemon Grove	0	0	1	14	6	17	5	5	0	0	5	53
Poway	0	0	0	2	3	10	9	3	4	1	7	39
San Marcos	0	0	7	26	33	26	6	8	16	0	11	133
Santee	0	1	9	24	7	25	3	5	7	0	14	95
Solana Beach	0	0	3	1	0	1	0	1	2	0	0	8
Vista	0	1	8	18	17	34	18	16	19	0	32	163
Unincorporated	1	0	22	116	75	145	40	39	45	0	78	561
San Diego Harbor Police	0	0	0	0	1	0	3	0	2	0	0	6
California Highway Patrol	0	0	0	4	0	0	1	16	4	8	3	36
California State University San Marcos	0	0	0	0	0	0	0	0	0	0	0	0
San Diego State University	0	0	0	0	0	0	0	0	1	0	0	1
University of California San Diego	0	0	0	1	0	0	1	1	0	0	1	4
State Parks and Recreation	0	0	0	0	0	0	0	0	0	0	0	0
TOTAL	10	14	363	820	640	1,241	407	434	402	15	719	5,065

NOTES: Homicide includes manslaughter (vehicular and non-vehicular). Other felony offenses include: kidnapping, forgery/checks/access cards, other theft-related offenses, arson, lewd conduct and other sex-related crimes, hit-and-run, and escape, bookmaking, and other felonies.

SOURCES: California Department of Justice, Criminal Justice Statistics Center; SANDAG

Table 31
NUMBER OF JUVENILE MISDEMEANOR AND STATUS ARRESTS BY OFFENSE TYPE AND JURISDICTION
San Diego Region, 2004

	Manslaughter/ Assault and Battery	Weapons Offenses	Misd. Burglary	Petty Theft	Vandalism	Drug Law Violations	Drunk/ Liquor Laws	Driving Under the Influence	Prostitution	Other	Total Misd.	Status	TOTAL
Carlsbad	34	0	0	165	8	49	30	4	0	94	384	23	407
Chula Vista	81	1	0	236	68	62	18	3	0	139	608	201	809
Coronado	6	0	0	14	3	12	7	2	0	6	50	0	50
El Cajon	182	5	0	158	18	117	35	2	2	164	683	120	803
Escondido	77	2	0	141	41	91	58	4	0	136	550	183	733
La Mesa	34	0	0	63	10	14	4	3	2	17	147	56	203
National City	30	1	0	129	23	64	26	0	5	26	304	43	347
Oceanside	80	7	0	205	35	99	43	12	4	70	555	215	770
San Diego	714	28	1	641	128	538	333	29	63	2,538	5,013	1,311	6,324
Sheriff - Total	427	38	0	253	152	394	188	39	0	493	1,984	564	2,548
Del Mar	4	0	0	0	1	1	1	0	0	0	7	1	8
Encinitas	17	8	0	22	3	21	18	6	0	32	127	28	155
Imperial Beach	24	5	0	4	19	34	25	2	0	66	179	38	217
Lemon Grove	12	2	0	10	3	5	1	1	0	7	41	29	70
Poway	18	0	0	25	3	13	21	14	0	23	117	15	132
San Marcos	70	0	0	40	30	24	15	3	0	89	271	52	323
Santee	55	2	0	23	9	40	13	1	0	48	191	43	234
Solana Beach	2	0	0	3	1	3	2	1	0	2	14	1	15
Vista	55	6	0	45	19	40	19	1	0	39	224	53	277
Unincorporated	170	15	0	81	64	213	73	10	0	187	813	304	1,117
San Diego Harbor Police	2	2	0	3	0	12	2	0	0	26	47	8	55
California Highway Patrol	2	0	0	0	1	3	0	40	0	23	69	0	69
California State University San Marcos	0	0	0	0	0	1	3	1	0	0	5	0	5
San Diego State University	0	1	2	7	0	3	6	0	0	30	49	0	49
University of California San Diego	0	0	0	0	0	1	2	1	0	0	4	1	5
State Parks and Recreation	2	0	0	2	0	1	26	0	0	9	40	0	40
TOTAL	1,671	85	3	2,017	487	1,461	781	140	76	3,771	10,492	2,725	13,217

NOTES: Misdemeanor drug law violations include glue sniffing. Other misdemeanors include: check/access cards, other theft-related offenses, annoying a child, obscene matter, lewd conduct and other sex-related crimes, contributing to the delinquency of a minor, hit-and-run and other selected traffic offenses, and other misdemeanors. Status includes truancy, runaway, curfew violations, incorrigible behavior, and other juvenile-specific offenses (e.g., failure to obey orders of the Juvenile Court and running away from court-ordered placement).

SOURCES: California Department of Justice, Criminal Justice Statistics Center; SANDAG

**Table 32
NUMBER OF JUVENILE FELONY ARRESTS BY OFFENSE TYPE AND JURISDICTION
San Diego Region, 2001**

	Homicide	Rape	Robbery	Aggravated Assault	Weapons Offenses	Burglary	Larceny	Motor Vehicle Theft	Drug Law Violations	Driving Under the Influence	Other	TOTAL
Carlsbad	0	0	6	27	5	28	20	3	20	0	11	120
Chula Vista	0	2	39	78	49	101	30	13	39	0	39	390
Coronado	0	1	0	0	0	7	2	0	1	0	3	14
El Cajon	0	1	9	51	31	46	18	5	16	0	24	201
Escondido	0	1	21	39	39	67	25	21	14	0	27	254
La Mesa	0	1	11	16	5	30	14	2	4	0	3	86
National City	0	0	24	24	16	46	21	7	15	0	14	167
Oceanside	0	1	11	72	28	50	22	5	18	1	50	258
San Diego	4	7	219	495	266	473	177	208	221	0	305	2,375
Sheriff - Total	2	5	40	294	115	346	152	55	79	0	177	1,265
Del Mar	0	0	0	1	0	0	0	0	0	0	4	5
Encinitas	0	0	0	8	0	16	2	1	4	0	11	42
Imperial Beach	0	1	4	8	2	23	5	4	7	0	7	61
Lemon Grove	0	0	1	12	1	13	0	5	3	0	5	40
Poway	0	1	0	18	6	19	4	4	2	0	17	71
San Marcos	0	0	1	22	23	45	11	2	7	0	19	130
Santee	1	0	2	45	4	30	18	1	8	0	10	119
Solana Beach	0	0	0	0	1	1	0	0	0	0	3	5
Vista	0	1	10	27	10	47	28	12	12	0	23	170
Unincorporated	1	2	22	153	68	152	84	26	36	0	78	622
San Diego Harbor Police	0	0	0	0	0	0	0	2	1	0	0	3
California Highway Patrol	0	0	0	5	0	1	5	11	1	6	3	32
California State University San Marcos	0	0	0	0	0	0	0	0	1	0	0	1
San Diego State University	0	0	0	0	1	7	0	0	0	0	0	8
University of California San Diego	0	0	0	0	0	0	0	0	1	0	0	1
State Parks and Recreation	0	0	0	0	0	0	0	1	0	0	0	1
TOTAL	6	19	380	1,101	555	1,202	486	333	431	7	656	5,176

NOTES: Homicide includes manslaughter (vehicular and non-vehicular). Other felony offenses include: kidnapping, forgery/checks/access cards, other theft-related offenses, arson, lewd conduct and other sex-related crimes, hit-and-run, and escape, bookmaking, and other felonies.

SOURCES: California Department of Justice, Criminal Justice Statistics Center; SANDAG

**Table 33
NUMBER OF JUVENILE MISDEMEANOR AND STATUS ARRESTS BY OFFENSE TYPE AND JURISDICTION
San Diego Region, 2001**

	Manslaughter/ Assault and Battery	Weapons Offenses	Petty Theft	Vandalism	Drug Law Violations	Drunk/ Liquor Laws	Driving Under the Influence	Prostitution	Other	Total Misd.	Status	TOTAL
Carlsbad	40	8	76	15	63	26	4	0	115	347	10	357
Chula Vista	141	4	204	71	121	36	6	0	86	669	289	958
Coronado	3	0	0	15	12	7	3	0	16	56	6	62
El Cajon	68	3	130	30	101	30	6	1	73	442	124	566
Escondido	56	6	91	81	90	57	14	0	176	571	260	831
La Mesa	45	0	66	12	29	2	0	0	14	168	66	234
National City	20	0	60	19	44	11	3	8	32	197	41	238
Oceanside	77	6	85	47	110	41	4	5	81	456	213	669
San Diego	880	19	894	354	618	397	32	28	2,033	5,255	2,285	7,540
Sheriff - Total	402	24	192	132	348	221	27	0	675	2,021	870	2,891
Del Mar	0	0	0	0	0	2	0	0	0	2	3	5
Encinitas	11	2	24	16	21	18	4	0	49	145	50	195
Imperial Beach	35	0	1	5	25	16	3	0	42	127	65	192
Lemon Grove	12	0	4	6	7	4	0	0	4	37	8	45
Poway	14	0	30	7	16	20	6	0	55	148	50	198
San Marcos	18	2	7	11	32	22	4	0	53	149	71	220
Santee	66	0	28	16	32	14	2	0	147	305	118	423
Solana Beach	3	0	1	0	3	1	0	0	0	8	4	12
Vista	46	3	18	13	18	13	3	0	69	183	113	296
Unincorporated	197	17	79	58	194	111	5	0	256	917	388	1,305
San Diego Harbor Police	5	0	2	1	5	0	0	0	30	43	11	54
California Highway Patrol	1	0	1	2	8	0	66	0	29	107	0	107
California State University San Marcos	0	0	0	0	0	0	0	0	0	0	0	0
San Diego State University	0	1	4	0	7	6	0	0	8	26	0	26
University of California San Diego	0	0	1	0	0	1	0	0	0	2	5	7
State Parks and Recreation	6	0	0	1	6	50	1	0	22	86	1	87
TOTAL	1,744	71	1,806	780	1,562	885	166	42	3,390	10,446	4,181	14,627

NOTES: Misdemeanor drug law violations include glue sniffing. Other misdemeanors include: check/access cards, other theft-related offenses, annoying a child, obscene matter, lewd conduct and other sex-related crimes, contributing to the delinquency of a minor, hit-and-run and other selected traffic offenses, and other misdemeanors. Status includes truancy, runaway, curfew violations, incorrigible behavior, and other juvenile-specific offenses (e.g., failure to obey orders of the Juvenile Court and running away from court-ordered placement).

SOURCES: California Department of Justice, Criminal Justice Statistics Center; SANDAG

**Table 34
NUMBER OF JUVENILE ARRESTS BY TYPE
2001, 2004, and 2005**

	2001	2004	2005	Change	
				2001-2005	2004-2005
Violent	3,250	2,878	2,647	-19%	-8%
Property	3,827	4,102	3,689	-4%	-10%
Alcohol/Drug Violations	3,051	2,799	2,686	-12%	-4%
Weapons Offenses	626	725	713	14%	-2%
Status	4,181	2,725	2,634	-37%	-3%
Other	4,868	5,053	4,759	-2%	-6%
TOTAL	19,803	18,282	17,128	-14%	-6%

NOTES: Violent includes homicide/manslaughter, rape, robbery, aggravated assault, and misdemeanor manslaughter and assault and battery. Property includes grand theft, felony and misdemeanor burglary, motor vehicle theft, and petty theft. Alcohol/drug includes driving-under-the-influence and drunk/liquor laws. Other includes other theft-related offenses, kidnapping, sex crimes, hit-and-run, violations of city and county ordinances, and other offenses. Status includes truancy, runaway, curfew violations, incorrigible behavior, and other juvenile-specific offenses (e.g., failure to obey orders of the Juvenile Court and running away from court-ordered placement).

SOURCES: California Department of Justice, Criminal Justice Statistics Center; SANDAG

**Table 35
NUMBER OF JUVENILE ARRESTS FOR VIOLENT OFFENSES
2001, 2004, and 2005**

	2001	2004	2005	Change	
				2001-2005	2004-2005
Felony					
Homicide	6	10	7	--	--
Rape	19	14	8	--	--
Robbery	380	363	313	-18%	-14%
Aggravated Assault	1,101	820	735	-33%	-10%
Total	1,506	1,207	1,063	-29%	-12%
Misdemeanor					
Manslaughter/Assault & Battery	1,744	1,671	1,584	-9%	-5%
TOTAL	3,250	2,878	2,647	-19%	-8%

NOTES: Homicide includes felony manslaughter (vehicular and non-vehicular). Percent changes are not presented when either comparison number equals 30 or less.

SOURCES: California Department of Justice, Criminal Justice Statistics Center; SANDAG

Table 36
NUMBER OF JUVENILE ARRESTS FOR PROPERTY OFFENSES
2001, 2004, and 2005

	2001	2004	2005	Change	
				2001-2005	2004-2005
Felony					
Burglary	1,202	1,241	1,140	-5%	-8%
Larceny Theft	486	407	395	-19%	-3%
Motor Vehicle Theft	333	434	381	14%	-12%
Total	2,021	2,082	1,916	-5%	-8%
Misdemeanor					
Petty Theft/Burglary	1,806	2,020	1,773	-2%	-12%
TOTAL	3,827	4,102	3,689	-4%	-10%

SOURCES: California Department of Justice, Criminal Justice Statistics Center; SANDAG

Table 37
NUMBER OF JUVENILE ARRESTS FOR ALCOHOL- AND DRUG-RELATED OFFENSES
2001, 2004, and 2005

	2001	2004	2005	Change	
				2001-2005	2004-2005
Felony					
Narcotics	79	72	64	-19%	-11%
Marijuana	179	133	138	-23%	4%
Dangerous Drugs	165	194	154	-7%	-21%
Other Drug Offenses	8	3	0	--	--
Driving Under the Influence	7	15	2	--	--
Total	438	417	358	-18%	-14%
Misdemeanor					
Marijuana	1,293	1,193	1,109	-14%	-7%
Other Drug Offenses	269	261	283	5%	8%
Drunk	426	359	386	-9%	8%
Liquor Laws	459	422	412	-10%	-2%
Driving Under the Influence	166	140	138	-17%	-1%
Total	2,613	2,375	2,328	-11%	-2%
TOTAL	3,051	2,792	2,686	-12%	-4%

NOTES: Narcotics include heroin, morphine, cocaine/rock, and barbiturates. Dangerous drugs include methamphetamine, depressants, and hallucinogens. Other drug offenses include illegal possession of drug paraphernalia, use of illegal prescriptions and prescription drugs, sale of chemicals used to produce drugs, under-the-influence, and other drug-related crimes. Other misdemeanor drug offenses include glue sniffing. Percent changes are not presented when either comparison number equals 30 or less.

SOURCES: California Department of Justice, Criminal Justice Statistics Center; SANDAG

Table 38
NUMBER OF JUVENILE ARRESTS FOR WEAPONS VIOLATIONS
2001, 2004, and 2005

	2001	2004	2005	Change	
				2001-2005	2004-2005
Juvenile					
Felony	555	640	625	13%	-2%
Misdemeanor	71	85	88	24%	4%
Total	626	725	713	14%	-2%

SOURCES: California Department of Justice, Criminal Justice Statistics Center; SANDAG

Table 39
NUMBER OF JUVENILE ARRESTS FOR FELONY AND MISDEMEANOR "OTHER" OFFENSES
2001, 2004, and 2005

	2001	2004	2005	Change	
				2001-2005	2004-2005
Felony - Other					
Sex-Related	127	92	86	-32%	-7%
Forgery/Checks	49	35	24	--	--
Arson	67	47	60	-10%	28%
Other Felonies	413	545	548	33%	1%
Total	656	719	718	9%	<-1%
Misdemeanor - Other					
Other Theft/Checks/Access Cards	36	22	22	--	--
Sex-Related	31	26	24	--	--
Prostitution	42	76	53	26%	-30%
Disturb Peace/Trespass/Disorderly	707	524	513	-27%	-2%
Vandalism/Graffiti	780	487	574	-26%	18%
Hit-and-Run	48	38	44	-8%	16%
Selected Traffic	122	92	55	-55%	-40%
City/County Ordinances	391	309	397	2%	28%
Failure to Appear/Non Traffic	52	22	23	--	--
Other Misdemeanors	2,003	2,738	2,336	17%	-15%
Total	4,212	4,334	4,041	-4%	-7%
TOTAL	4,868	5,053	4,759	-2%	-6%

NOTES: Sex-related includes lewd behavior, indecent exposure, annoying a child, obscene matter, and other sex offenses. Selected traffic includes driving without insurance or license, equipment violations, and others. City and county ordinances include loitering, littering, and other codes specific to cities/county. Other felony and misdemeanor arrests include felony kidnapping and other felonies, and misdemeanor contributing to the delinquency of a minor, malicious mischief, joyriding, gambling, and nonsupport as well as various election, building, fire, and water code violations.

SOURCES: California Department of Justice, Criminal Justice Statistics Center; SANDAG

**Table 40
NUMBER OF ARRESTS FOR STATUS OFFENSES BY GENDER
2001, 2004, and 2005**

	2001	2004	2005	Change	
				2001-2005	2004-2005
Truancy					
Boys	568	278	346	-39%	24%
Girls	334	145	148	-56%	2%
Total	902	423	494	-45%	17%
Runaway					
Boys	149	191	156	5%	-18%
Girls	308	283	232	-25%	-18%
Total	457	474	388	-15%	-18%
Curfew					
Boys	1,370	721	804	-41%	12%
Girls	644	341	383	-41%	12%
Total	2,014	1,062	1,187	-41%	12%
Incorrigible					
Boys	7	9	2	--	--
Girls	17	7	2	--	--
Total	24	16	4	--	--
Other Status					
Boys	535	476	385	-28%	-19%
Girls	249	274	176	-29%	-36%
Total	784	750	561	-28%	-25%
TOTAL	4,181	2,725	2,634	-37%	-3%

NOTES: Percent changes are not presented when either comparison number is equal to 30 or less. Variations in emphasis or focus on individual status offenses by law enforcement and prosecution agencies impact the number of arrests/juvenile contacts. "Other" status offenses include failure to obey orders of the Juvenile Court (such as community service and fines) and running away from court-ordered placement.

SOURCES: California Department of Justice, Criminal Justice Statistics Center; SANDAG

**Table 41
POPULATION ESTIMATIONS, SAN DIEGO REGION
2001, 2004, and 2005**

	2001	2004	2005	Change	
				2001-2005	2004-2005
BY ETHNICITY					
Adult					
White	1,249,728	1,260,904	1,265,627	1%	<1%
Black	107,702	112,956	115,407	7%	2%
Hispanic	499,979	567,743	577,406	15%	2%
Other	272,146	309,752	314,176	15%	1%
Total	2,129,555	2,251,355	2,272,616	7%	1%
Juvenile					
White	138,350	140,593	139,447	1%	-1%
Black	21,160	22,128	22,146	5%	<1%
Hispanic	118,124	135,062	135,007	14%	<-1%
Other	46,720	50,756	50,159	7%	-1%
Total	324,354	348,539	346,759	7%	-1%
BY GENDER					
Adult					
Male	1,059,530	1,119,301	1,133,458	7%	1%
Female	1,070,025	1,132,054	1,139,158	6%	1%
Total	2,129,555	2,251,355	2,272,616	7%	1%
Juvenile					
Male	166,298	177,641	176,524	6%	-1%
Female	158,056	170,898	170,235	8%	<-1%
Total	324,354	348,539	346,759	7%	-1%
BY AGE					
10-14	208,654	221,715	217,258	4%	-2%
15-17	115,700	126,824	129,501	12%	2%
18-24	324,028	336,366	338,691	5%	1%
25-29	223,610	232,419	227,671	2%	-2%
30-39	461,200	464,119	459,322	<-1%	-1%
40 and Over	1,120,717	1,218,451	1,246,932	11%	2%
Total 10+	2,453,909	2,599,894	2,619,375	7%	1%

NOTES: The populations in this table are used to calculate arrest rates and include individuals ten years and older (10-17 for juveniles and 18 and older for adults), based upon the U.S. Census 2000 and current California Department of Finance updates.

SOURCES: U.S. Census Bureau, Census 2000; California Department of Finance, revised E5 City/County Population Estimates, May 2006; SANDAG, Demographic/Economic Estimates August 2006

Table 42
POPULATION ESTIMATIONS BY JURISDICTION
San Diego Region, 2001, 2004 and 2005

	2001	2004	2005	Change	
				2001-2005	2004-2005
Carlsbad					
Adult	63,427	70,687	72,301	14%	2%
Juvenile	8,734	10,067	10,327	18%	3%
Total	72,161	80,754	82,628	15%	2%
Chula Vista					
Adult	129,883	149,895	155,232	20%	4%
Juvenile	23,265	26,901	27,343	18%	2%
Total	153,148	176,796	182,575	19%	3%
Coronado					
Adult	19,960	22,193	22,726	14%	2%
Juvenile	1,857	1,933	1,890	2%	-2%
Total	21,817	24,126	24,616	13%	2%
El Cajon					
Adult	69,478	70,253	70,117	1%	<-1%
Juvenile	11,211	11,870	11,925	6%	<1%
Total	80,689	82,123	82,042	2%	<-1%
Escondido					
Adult	95,623	99,265	99,352	4%	1%
Juvenile	16,750	18,462	18,633	11%	1%
Total	112,373	117,727	117,985	5%	1%
La Mesa					
Adult	44,196	44,248	44,068	<1%	<-1%
Juvenile	4,839	5,038	5,026	4%	<-1%
Total	49,035	49,286	49,094	<1%	<-1%
National City					
Adult	39,451	42,836	46,310	17%	8%
Juvenile	7,429	8,219	8,035	8%	-2%
Total	46,880	51,055	54,345	16%	6%
Oceanside					
Adult	118,791	123,490	124,169	5%	1%
Juvenile	19,709	21,399	21,353	8%	<1%
Total	138,500	144,889	145,522	5%	<1%
San Diego					
Adult	944,701	983,583	990,654	5%	1%
Juvenile	128,405	138,219	137,333	7%	-1%
Total	1,073,106	1,121,802	1,127,987	5%	1%
Sheriff - Total					
Adult	580,263	615,655	622,731	7%	1%
Juvenile	100,312	104,603	103,390	3%	-1%
Total	680,575	720,258	726,121	7%	1%
Del Mar					
Adult	3,842	3,903	3,891	1%	<-1%
Juvenile	280	290	280	<-1%	-3%
Total	4,122	4,193	4,171	1%	-1%

Table 42 (continued)
POPULATION ESTIMATIONS BY JURISDICTION
San Diego Region, 2001, 2004 and 2005

	2001	2004	2005	Change	
				2001-2005	2004-2005
Encinitas					
Adult	45,518	48,573	48,918	7%	1%
Juvenile	6,407	6,626	6,477	1%	-2%
Total	51,925	55,199	55,395	7%	<-1%
Imperial Beach					
Adult	19,524	20,034	20,002	2%	<-1%
Juvenile	3,427	3,424	3,349	-2%	-2%
Total	22,951	23,458	23,351	2%	<1%
Lemon Grove					
Adult	18,216	18,580	18,481	1%	-1%
Juvenile	3,303	3,366	3,374	2%	<1%
Total	21,519	21,946	21,855	2%	<-1%
Poway					
Adult	34,326	36,811	37,242	8%	1%
Juvenile	7,721	7,736	7,519	-3%	-3%
Total	42,047	44,547	44,761	6%	<1%
San Marcos					
Adult	41,509	48,510	52,360	26%	8%
Juvenile	6,567	8,226	8,926	36%	9%
Total	48,076	56,736	61,286	27%	8%
Santee					
Adult	38,740	39,808	40,454	4%	2%
Juvenile	7,213	6,943	6,800	-6%	-2%
Total	45,953	46,751	47,254	3%	1%
Solana Beach					
Adult	10,776	11,004	11,027	2%	<1%
Juvenile	1,129	1,185	1,140	1%	-4%
Total	11,905	12,189	12,167	2%	<-1%
Vista					
Adult	64,878	67,395	67,211	4%	<-1%
Juvenile	11,427	12,004	11,895	4%	-1%
Total	76,305	79,399	79,106	4%	<-1%
Unincorporated					
Adult	302,934	321,037	323,145	7%	1%
Juvenile	52,838	54,803	53,630	1%	-2%
Total	355,772	375,840	376,775	6%	<-1%
SAN DIEGO REGION WITH CAMP PENDLETON					
Adult	2,129,555	2,251,355	2,272,616	7%	1%
Juvenile	324,354	348,539	346,759	7%	-1%
TOTAL	2,453,909	2,599,894	2,619,375	7%	1%

NOTES: The populations in this table are used to calculate arrest rates and include individuals ten years and older (10-17 for juveniles and 18 and older for adults), based upon the U.S. Census 2000 and current California Department of Finance updates. Camp Pendleton population is excluded from the Sheriff's unincorporated area but included in the region total.

SOURCES: U.S. Census Bureau, Census 2000; California Department of Finance, Revised E5 City/County Population Estimates, May 2006; SANDAG, Demographic/Economic Estimates August 2006