



Twenty-Five Years of Crime in the San Diego Region: 1984 through 2008

April 2009

Cynthia Burke, Ph.D., Division Director



401 B Street
Suite 800
San Diego, CA 92101
(619) 699-1900

BOARD OF DIRECTORS



The 18 cities and county government are SANDAG serving as the forum for regional decision-making. SANDAG builds consensus; plans, engineers, and builds public transit; makes strategic plans; obtains and allocates resources; and provides information on a broad range of topics pertinent to the region's quality of life.

CHAIR	FIRST VICE CHAIR	SECOND VICE CHAIR	EXECUTIVE DIRECTOR
Hon. Lori Holt Pfeiler	Hon. Jerome Stocks	Hon. Jack Dale	Gary L. Gallegos

CITY OF CARLSBAD

Hon. Matt Hall, Councilmember
(A) Hon. Bud Lewis, Mayor
(A) Hon. Ann Kulchin, Mayor Pro Tem

CITY OF CHULA VISTA

Hon. Cheryl Cox, Mayor
(A) Hon. John McCann, Deputy Mayor
(A) Hon. Steve Castaneda, Councilmember

CITY OF CORONADO

Hon. Carrie Downey, Councilmember
(A) Hon. Al Ovrom, Councilmember
(A) Hon. Michael Woiwode, Councilmember

CITY OF DEL MAR

Hon. Crystal Crawford, Mayor
(A) Hon. Carl Hilliard, Councilmember
(A) Hon. Richard Earnest, Deputy Mayor

CITY OF EL CAJON

Hon. Mark Lewis, Mayor
(A) Hon. Jillian Hanson-Cox, Councilmember

CITY OF ENCINITAS

Hon. Jerome Stocks, Councilmember
(A) Hon. Teresa Barth, Councilmember
(A) Hon. Dan Dalager, Deputy Mayor

CITY OF ESCONDIDO

Hon. Lori Holt Pfeiler, Mayor
(A) Hon. Sam Abed, Councilmember

CITY OF IMPERIAL BEACH

Hon. Jim Janney, Mayor
(A) Hon. Patricia McCoy, Mayor Pro Tem
(A) Hon. Jim King, Councilmember

CITY OF LA MESA

Hon. Art Madrid, Mayor
(A) Hon. Mark Arapostathis, Councilmember
(A) Hon. David Allan, Councilmember

CITY OF LEMON GROVE

Hon. Mary Teresa Sessom, Mayor
(A) Hon. Jerry Jones, Mayor Pro Tem
(A) Hon. Jerry Selby, Councilmember

CITY OF NATIONAL CITY

Hon. Ron Morrison, Mayor
(A) Hon. Frank Parra, Vice Mayor
(A) Hon. Rosalie Zarate, Councilmember

CITY OF OCEANSIDE

Hon. Jim Wood, Mayor
(A) Hon. Jerry Kern, Councilmember
(A) Hon. Jack Feller, Councilmember

CITY OF POWAY

Hon. Mickey Cafagna, Mayor
(A) Hon. Don Higginson, Deputy Mayor
(A) Hon. Betty Rexford, Councilmember

CITY OF SAN DIEGO

Hon. Jerry Sanders, Mayor
(A) Hon. Anthony Young, Councilmember
(A) Hon. Sherri Lightner, Councilmember

Hon. Ben Hueso, Council President
(A) Hon. Marti Emerald, Councilmember
(A) Hon. Todd Gloria, Councilmember

CITY OF SAN MARCOS

Hon. Jim Desmond, Mayor
(A) Hon. Hal Martin, Vice Mayor
(A) Hon. Rebecca Jones, Councilmember

CITY OF SANTEE

Hon. Jack Dale, Councilmember
(A) Hon. Hal Ryan, Councilmember
(A) Hon. John Minto, Councilmember

CITY OF SOLANA BEACH

Hon. Lesa Heebner, Councilmember
(A) Hon. Dave Roberts, Councilmember
(A) Hon. Mike Nichols, Mayor

CITY OF VISTA

Hon. Judy Ritter, Councilmember
(A) Hon. Bob Campbell, Mayor Pro Tem
(A) Hon. Steve Gronke, Councilmember

COUNTY OF SAN DIEGO

Hon. Dianne Jacob, Chairwoman
(A) Hon. Bill Horn, Chair Pro Tem
(A) Hon. Ron Roberts, Supervisor
Hon. Pam Slater-Price, Vice Chairwoman
(A) Hon. Greg Cox, Supervisor

IMPERIAL COUNTY

(Advisory Member)
Hon. Victor Carrillo, Supervisor
(A) Hon. David Ouzan, Councilmember

CALIFORNIA DEPARTMENT OF TRANSPORTATION

(Advisory Member)
Will Kempton, Director
(A) Pedro Orso-Delgado, District 11 Director

METROPOLITAN TRANSIT SYSTEM

(Advisory Member)
Harry Mathis, Chairman
(A) Hon. Ron Roberts
(A) Hon. Ernest Ewin

NORTH COUNTY TRANSIT DISTRICT

(Advisory Member)
Hon. Bob Campbell, Chair
(A) Hon. Jerome Stocks, Planning Committee Chair
(A) Hon. Dave Roberts, Monitoring Committee Chair

U.S. DEPARTMENT OF DEFENSE

(Advisory Member)
CAPT Steve Wirsching, USN, CEC,
Southwest Division Naval Facilities Engineering Command
(A) CAPT Robert Fahey, USN, CEC
Southwest Division Naval Facilities Engineering Command

SAN DIEGO UNIFIED PORT DISTRICT

(Advisory Member)
Laurie Black, Commissioner

SAN DIEGO COUNTY WATER AUTHORITY

(Advisory Member)
Mark Muir, Commissioner
(A) Howard Williams, Commissioner
(A) Gary Croucher, Commissioner

SOUTHERN CALIFORNIA TRIBAL CHAIRMEN'S ASSOCIATION

(Advisory Member)
Chairman Robert Smith (Pala), SCTCA Chair
(A) Chairman Allen Lawson (San Pasqual)

MEXICO

(Advisory Member)
Hon. Remedios Gómez-Arnau
Cónsul General of Mexico
Hon. Martha E. Rosas,
Deputy Cónsul General of Mexico

As of March 6, 2009

TWENTY-FIVE YEARS OF CRIME IN THE SAN DIEGO REGION: 1984 THROUGH 2008

INTRODUCTION

Since 1980, SANDAG has been reporting crime statistics for the San Diego region through a cooperative agreement with local law enforcement agencies. This report presents and discusses crime trend data for the past 25 years. Crime rates per 1,000 resident population¹, as well as the actual number of crimes reported, are presented. SANDAG is the only local entity to compile these statistics across the 18 incorporated cities, as well as the unincorporated areas of the county, making this information some of the most frequently requested from SANDAG's Criminal Justice Clearinghouse. These data are useful to local law enforcement, policy makers, and the community in tracking public safety over time, as well as the effectiveness of prevention and response efforts on regional crime rates.

OVERALL CRIME

There was a total of 97,168 Part I crimes in the San Diego region in 2008 (Appendix Tables 1 and 5) which equated to 30.88 crimes per 1,000 population (Appendix Table 2). Part I crimes include 4 violent offenses (homicide, rape, robbery, and aggravated assault) and 3 property offenses (burglary, larceny, and motor vehicle theft) that are tracked nationwide in a standardized manner by the FBI, with agencies submitting crime data through the Uniform Crime Reporting (UCR) system. Other crimes, such as drug-related offenses, vandalism, and fraud, are also documented by local law enforcement, but as Part II crimes. However, because categorization schemes can vary across agencies, standardized numbers are not available, even though these crimes may be

sizeable in number and require substantial attention and resources from law enforcement.

FAST FACTS

- In 2008, both the violent and property crime rates for the San Diego region decreased and were at 25-year lows (4.09 and 26.79, respectively, per 1,000 residents).
- There were 90 homicides in the San Diego region in 2008, the third lowest number in the past 25 years.
- After five consecutive increases, the number of robberies decreased eight percent in 2008, compared to 2007.
- While the number of burglaries that involved entry through an open or unlocked door or window declined in 2008, the number involving forced entry increased 12 percent from the previous year.
- Motor vehicle thefts decreased 18 percent from 2007, more than any other property crime. However, thefts of motor vehicle parts increased 9 percent.
- Firearms were used less frequently in both robberies and aggravated assaults in 2008, compared to 2007.
- According to preliminary statistics, there were 118 hate crime events reported to local law enforcement in 2008.

¹ The populations used to calculate rates are provided in Appendix Table 20.

VIOLENT CRIME

In 2008, there were 12,873 Part I violent crimes reported to law enforcement in the San Diego region (Appendix Tables 1 and 6)². The most common type was aggravated assault, which represented almost two-thirds (62%) of all violent crime in 2008; robbery represented 31 percent, rape 7 percent, and homicide 1 percent. According to statistics from the National Crime Victimization Survey, just under half (46%) of violent crimes were reported to law enforcement nationwide in 2007 (not shown).

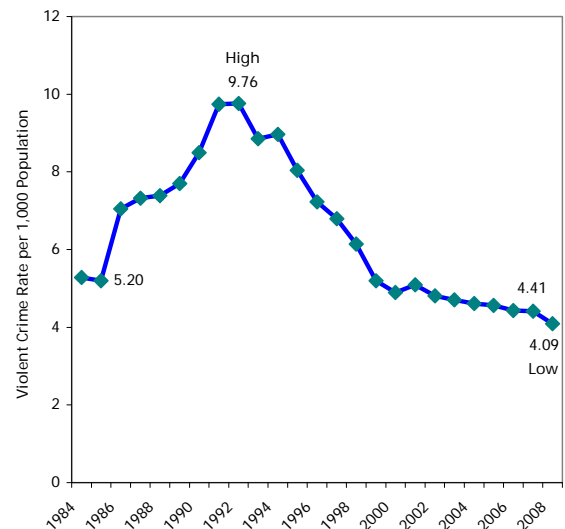
As Figure 1 shows, the violent crime rate (per 1,000 population) in the San Diego region began to increase in 1986 (from 5.20 in 1985), reaching a peak of 9.76 in 1992. Since then, there has been a decline to 4.09 violent crimes per 1,000 residents in 2008, which represented a 7 percent decrease from 2007 (4.41), the largest one-year decrease since 1998 to 1999 (when the rate decreased 15%). This 2008 violent crime rate was also the lowest in the past 25 years. Possible factors related to this overall drop in crime since the 1990s could include declining numbers of young males in high-crime associated age groups, legislation which increased jail and prison time for violent offenses, and the implementation of effective crime prevention programs.

Across jurisdictions, the 2008 violent crime rate ranged from .54 in 4S Ranch to 7.93 in National City (Appendix Table 3 and Appendix Map 1). Over the past year, 16 jurisdictions had lower and 5 had higher violent crime rates, compared to 2007 (4 had numbers too small for valid comparisons). Fallbrook and Carlsbad led local jurisdictions with 39 and 30 percent one-year decreases, respectively, in their violent crime rate, with other declines ranging from 3 percent to 28 percent. Ongoing efforts by individual departments to address violent crime have included problem-solving strategies to

² The numbers of violent crimes reported in each jurisdiction for 2004 through 2008 are also presented in Appendix Tables 10 through 14.

identify and target specific high-crime areas, specific groups (e.g., gangs committing disproportionate amount of crime), and specific times (e.g., targeted patrols during high-crime hours).

Figure 1
VIOLENT CRIME RATE LOWEST
IN 25 YEARS

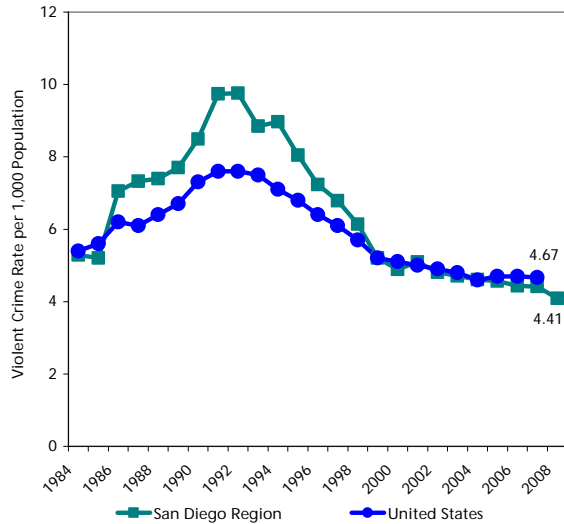


SOURCES: SANDAG; California Department of Finance; U.S. Census 1990; U.S. Census 2000

Annual statistics through 2007 from the FBI were used to compare changes over time in the violent crime rate reported in the San Diego region to those reported across the United States. As Figure 2 shows, the San Diego region experienced a greater rise in violent crime in the late 1980s and early 1990s compared to the nation, returning to a similar violent crime rate after 1998. This increase was possibly related to the prevalence of methamphetamine distribution and use in the region during this time period.

In 2007, the violent crime rate in the San Diego region was 4.41, versus 4.67 for the nation as a whole³.

Figure 2
SAN DIEGO REGION HAD A GREATER INCREASE IN VIOLENT CRIME THAN THE NATION IN LATE 1980s



SOURCES: SANDAG; Federal Bureau of Investigation

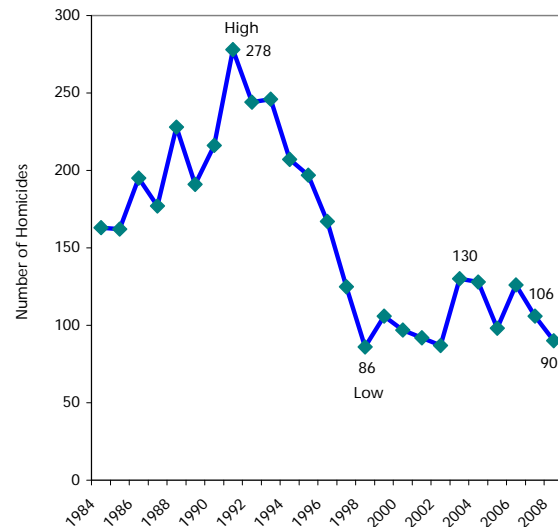
Each jurisdiction also voluntarily documents violent crimes committed against senior citizens (individuals 60 years of age and older). In 2008, there were 481 violent crimes against senior citizens, a decrease of 5 percent from the previous year, similar to the decline in violent crime overall. These crimes included 13 homicides, 5 rapes, 200 robberies, and 263 aggravated assaults (not shown).

Homicide

Over the past 25 years, the number of homicides in the San Diego region peaked at 278 in 1991 and decreased fairly steadily to a low of 86 in 1998 (Figure 3). Since then, the number of homicides has fluctuated but has

not exceeded 130 (in 2003) (Appendix Table 8). In 2008, there was a total of 90 homicides, which was the third lowest number in the past 25 years and a 15 percent decrease from 2007 (106). As reported in SANDAG's CJ Bulletin *San Diego Violent Crime Victims and Suspects in 2007* (available on the SANDAG Web site), in homicide cases across the region for which motive could be determined in 2007, 47 percent were related to gang activity, 19 percent to an argument, 13 percent to domestic violence, 9 percent to other motives, 7 percent to drugs, and 4 percent to robbery. Motive information for 2008 homicides will be available in another report later in the 2009 calendar year.

Figure 3
NUMBER OF HOMICIDES DECREASED TO THIRD LOWEST IN PAST 25 YEARS



SOURCE: SANDAG

Rape

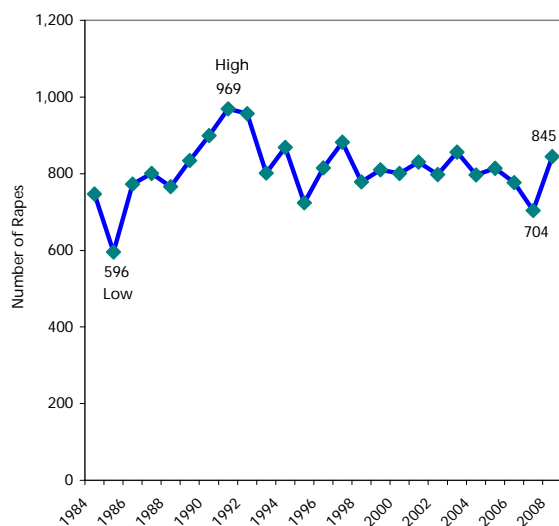
There were 845 rapes reported in the San Diego region in 2008, which was a 20 percent increase from 2007 (704) (Appendix Table 1). Analyses revealed that this increase was the result of a greater number of completed rapes being reported (694 in 2008

³ Calendar year 2007 represents the most current annual statistics at the national level at the time of this publication. However, preliminary mid-year 2008 national statistics released by the FBI in January 2009 show a 3.5 percent decline in violent crime, compared to the same point in 2007.

versus 529 in 2007, a 31% increase), rather than attempted rape reports (which actually decreased 14% from 175 to 151) (not shown)⁴.

As Figure 4 shows, the number of rapes reported to law enforcement has remained relatively stable over the past 25 years, compared to the number of homicides during the same period of time. The greatest number of rapes reported to law enforcement was 969 in 1991 and the lowest was 596 in 1985 (the second lowest number was 704 in 2007).

Figure 4
LESS VARIABILITY IN NUMBER OF RAPES COMPARED TO OTHER VIOLENT CRIMES



SOURCE: SANDAG

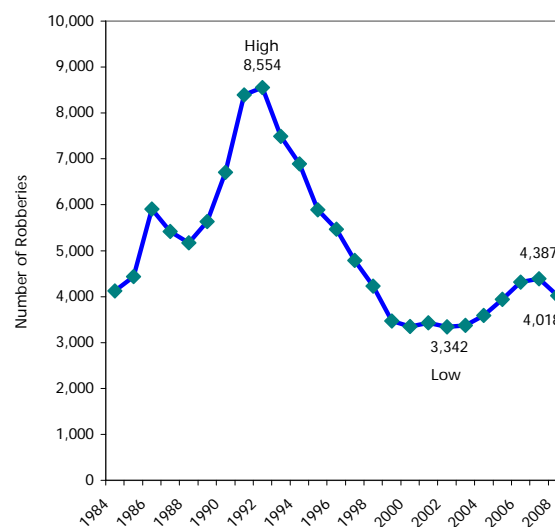
Robbery

Between 2003 and 2007, robbery was the only violent crime to increase in number (30%) across the region, generating increased attention from law enforcement. Specifically, representatives from local agencies increased their collaborative efforts to share intelligence and target enforcement,

⁴ For the past 20 years, the proportion of attempted rapes of all reported rapes ranged from 15 percent to 29 percent, with an average of 24 percent. The number of rapes, either attempted or completed, that are reported may be tied in part to education and outreach efforts encouraging victims to do so.

conducted public information campaigns, and increased crime prevention efforts. In 2008, this upward trend (5 consecutive years of increases) was reversed, with 4,018 robbery incidents reported to law enforcement, an 8 percent decrease from 2007 (4,387) (Figure 5 and Appendix Table 1). Over the past 25 years, the number of robberies has shown 2 declining trends prior to this most recent decrease, with the last beginning in 1993 (after the greatest number, 8,554, was reported in 1992). The lowest number, 3,342, was reported in 2002.

Figure 5
NUMBER OF ROBBERIES DECREASED FOR FIRST TIME IN PAST SIX YEARS



SOURCE: SANDAG

As part of standardized UCR reporting requirements, the type of weapon used during a robbery and the location of the robbery are documented. In 2008, 20 percent of robberies involved a firearm, 11 percent a knife or other cutting instrument, 8 percent another weapon (e.g., bat, stick, or other blunt object), and the majority (61%) were considered strong-arm. Robberies committed with firearms and other weapons both decreased by 24 percent in 2008, from 2007. However, robberies committed with knives decreased only 9 percent and strong-arm robberies actually increased 1 percent (not shown).

Just under half (49%) of robberies occurred out in the open, on streets or in other public places, 24 percent in commercial establishments, 15 percent in other locations (which include wooded areas, churches, schools, and other public buildings), 8 percent in residences, and 4 percent in banks (not shown).

For the 14 jurisdictions with robbery numbers large enough for comparison (30 incidents or more) in 2007 and 2008, 10 experienced a decrease in the number of robberies (ranging from 2% to 46%) and 4 experienced an increase (ranging from 2% to 50%) (Appendix Tables 13 and 14).

Aggravated Assault

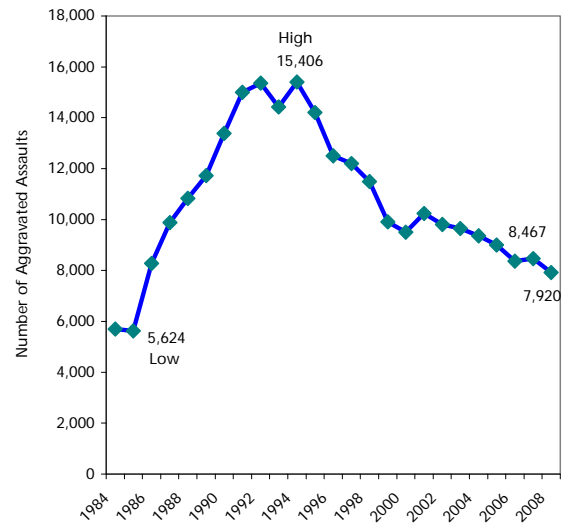
As Figure 6 and Appendix Table 1 show, there were fewer aggravated assaults reported in the region in 2008 (7,920), compared to one year earlier (8,467), a decrease of 6 percent. Over the past 25 years, the number of aggravated assaults followed an upward trend from 1985 (5,624) that peaked in 1994 (15,406). This overall increase was due at least in part to 1986 legislation requiring law enforcement agencies to report all domestic violence incidents. Since 1994, there has been an overall decline to 7,920 in 2008, the lowest number since 1985, the year before the legislation was put into place⁵.

Like robbery, the type of weapon used in aggravated assaults is documented for reporting purposes. In 2008, 37 percent of aggravated assaults involved the use of another weapon (e.g., bat, stick, or other blunt object); 31 percent hands, feet, or fists; 19 percent a knife or other cutting instrument; and 13 percent a firearm. The number of aggravated assaults in each of these categories decreased over the past year

⁵ In 2008, there were almost 3 simple assaults for every aggravated assault that was reported (for a total of 21,427 simple assaults). Simple assaults, which are not counted as Part I crimes, include all assaults and attempted assaults which are not of an aggravated nature and do not result in serious injury to the victim.

(between 9% and 17%), with the exception of hands, feet, or fists, which increased by 3 percent (not shown).

**Figure 6
NUMBER OF AGGRAVATED
ASSAULTS DECREASED OVER
ONE-YEAR PERIOD**



SOURCE: SANDAG

The majority of jurisdictions (15 of 21 with large enough numbers for comparison) also experienced decreases in the number of reported aggravated assaults, ranging from 2 to 37 percent. Of the rest, 3 experienced an increase and 3 had no change (Appendix Tables 13 and 14).

PROPERTY CRIME

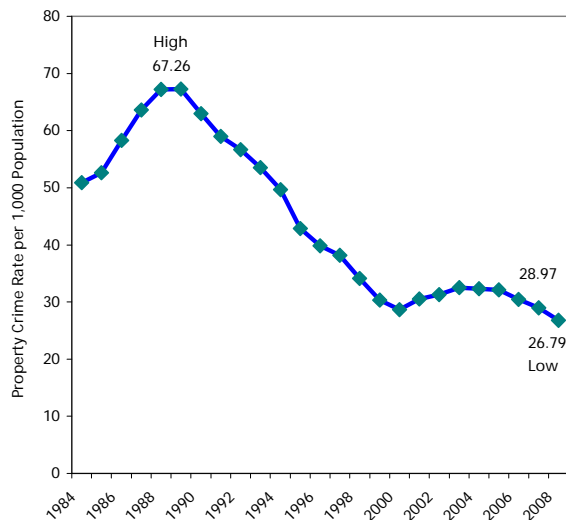
With 84,295 property crimes reported (Appendix Tables 1 and 7), 1 in every 37 residents was the victim of a property crime in 2008 and almost 9 in every 10 crimes (87%) reported to law enforcement in the region represented property crime (not shown)⁶. With the fifth consecutive annual decrease, the property crime rate was also at its lowest point in the past 25 years (26.79 from 28.97 in

⁶ According to statistics from the 2007 National Crime Victimization Survey, 37 percent of property crime nationwide was reported to law enforcement.

2007) (Figure 7). The highest property crime rate in the past 25 years was reported in 1988 (67.26). Over half (56%) of all property crime in 2008 represented larcenies, 24 percent were motor vehicle thefts, and 20 percent were burglaries (not shown).

Across the region, 15 jurisdictions had a lower property crime rate in 2008, compared to 2007, and 9 had a higher rate. These 2008 rates ranged from 8.95 (in 4S Ranch) to 37.77 (in Del Mar) per 1,000 population (Appendix Table 4 and Appendix Map 2)⁷. When interpreting these statistics, it is important to note that a variety of factors can affect a jurisdiction's crime rate, such as daytime populations and accessibility.

Figure 7
PROPERTY CRIME RATE DECREASED FOR FIFTH YEAR



SOURCES: SANDAG; California Department of Finance; U.S. Census 1990; U.S. Census 2000

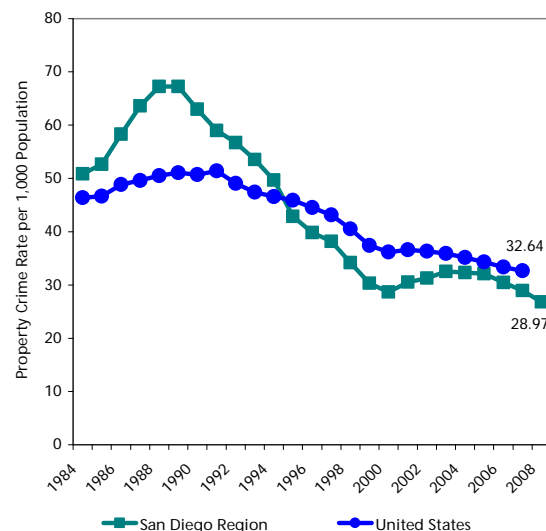
In terms of dollar value, \$258.6 million worth of property was stolen in the San Diego region in 2008, compared to \$266.4 million in 2007 (Appendix Table 17). Thirty-five percent (35%) of this property, which was valued at \$89.8 million, was recovered in 2008, compared to 40 percent and \$107.9 million

⁷ The numbers of property crimes reported in each jurisdiction for 2004 through 2008 are also presented in Appendix Tables 10 through 14.

recovered in 2007 (Appendix Tables 18 and 19).

Figure 8 compares property crime rates in the San Diego region from 1984 through 2008 to national rates from 1984 through 2007 (the most recent annual statistics available, as previously noted)⁸. In 1984, the San Diego region had a higher property crime rate compared to the U.S. overall. The local property crime rate began to decline in the early 1990s, however, falling and remaining below the national average since 1995. In 2007, the property crime rate for the region was 28.97, compared to 32.64 for the nation.

Figure 8
SAN DIEGO REGION HAS HAD A LOWER PROPERTY CRIME RATE THAN THE NATION SINCE 1995



SOURCES: SANDAG; Federal Bureau of Investigation

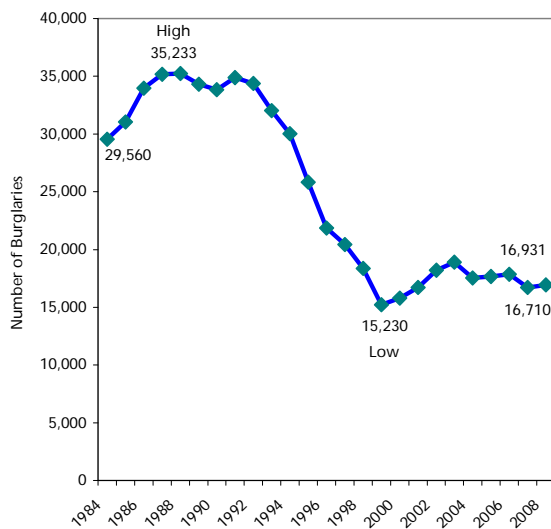
Burglary

Burglary is the unlawful entry of a structure to commit a felony or theft. The number of burglaries (including residential and non-residential) reported in the region began an upward trend in 1985 (from 29,560 in 1984), reaching a 25-year high of 35,233 in 1988.

⁸ Preliminary mid-year 2008 statistics released in January 2009 by the FBI show a 2.5 percent decline in property crime nationwide compared to the same point in 2007.

Four years later, an eight-year decline began, reaching a low of 15,230 in 1999. Since then, the number of burglaries has fluctuated slightly, with a 1 percent increase from 2007 (16,710) to 2008 (16,931) (Figure 9). In 2008, the number of burglaries which involved forced entry increased by 12 percent from 2007 (from 4,877 to 5,477), while the number involving no forced entry or which were unsuccessful attempts decreased (by 3% and 4%, respectively) (not shown).

Figure 9
NUMBER OF BURGLARIES INCREASED OVER PAST YEAR



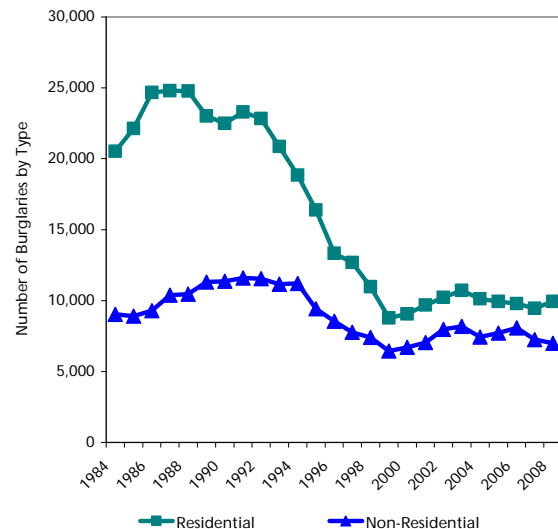
SOURCE: SANDAG

Of the 16,931 burglaries reported in the San Diego region in 2008, over half (59%) were residential, which equates to 1 in every 110 households being burglarized. While the number of residential and non-residential burglaries were both at a 25-year low in 1999, residential burglaries have decreased to a greater degree since 1984 (52%), compared to non-residential burglaries (23%), despite the large increase during the same time period in the number of occupied households in the region (51%, from 719,816 in 1984 to 1,089,451 in 2008)⁹ (not shown). One possible factor related to these divergent trends is that residential burglary is considered a strike

⁹ Comparable statistics regarding the number of business locations are not available.

under California's Three Strikes Law (which was passed in 1994), but non-residential burglary is not, leading more sophisticated criminals to avoid residences when committing this crime. However, over the past year, the number of residential burglaries increased 5 percent (from 9,455 to 9,936), while the number of non-residential burglaries decreased 4 percent (from 7,255 to 6,995) (Figure 10 and Appendix Tables 13 and 14). According to law enforcement, some of this increase could be related in part to more vacant homes, including ones related to foreclosure.

Figure 10
RESIDENTIAL BURGLARIES DECREASED MORE OVER PAST 25 YEARS, BUT UP COMPARED TO PAST YEAR



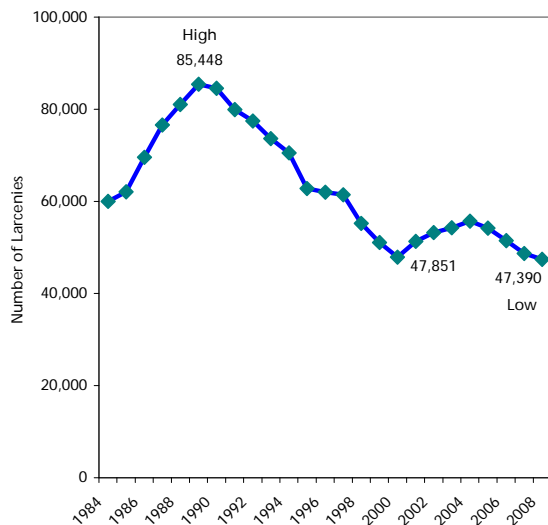
SOURCE: SANDAG

Across the 24 jurisdictions with more than 30 incidents of burglary in 2007 and 2008, 14 reported one-year decreases in the number (ranging from <1% to 20%) and 10 had increases (compared to only 2 reporting one-year increases between 2006 and 2007). The increases ranged from 1 to 63 percent (Appendix Tables 13 and 14).

Larceny

Larceny, or theft, is the most common crime, with 1 in every 66 residents a victim in 2008 (not shown). Beginning in 1985, the number of larcenies reported in the San Diego region began an upward trend, peaking at 85,448 in 1989, and then decreasing to 47,851 in 2000 (Figure 11). Since then, there were 4 years of consecutive increases, followed by 4 consecutive decreases, to a 25-year low of 47,390 in 2008.

Figure 11
LARCENIES DECREASED FOR
FOURTH CONSECUTIVE YEAR



SOURCE: SANDAG

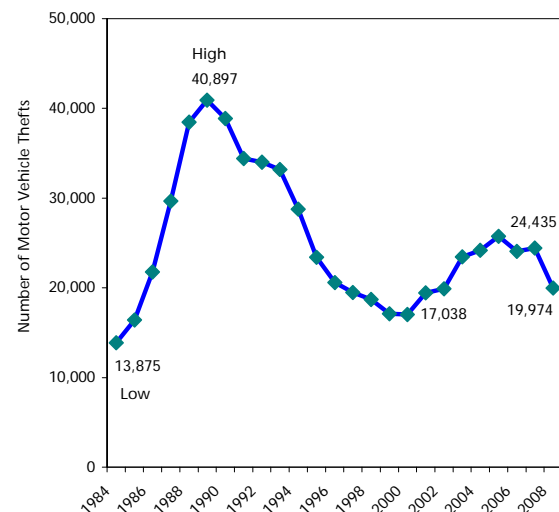
The most common larceny type (historically and in 2008) was theft from inside motor vehicles (45%), with the second most common from buildings (19%). Compared to 2007, both of these types of larcenies, as well as pickpocket, bicycle theft, and other types were down, but shoplifting and theft of motor vehicle parts were both up (3% and 9%, respectively). Most larcenies (61%) in 2008 were petty thefts, involving property valued at \$400 or less (not shown).

Despite the fact that the number of larcenies was at a regional low, 13 of the jurisdictions did report one-year increases (which ranged from 2% to 87%), while 11 had decreases (ranging from <1% to 20%) (Appendix Tables 13 and 14).

Motor Vehicle Theft

Beginning in 1985, the number of motor vehicles stolen in the San Diego region also began to increase (from 13,875 in 1984), reaching a high in 1989 of 40,897 (Figure 12). This upward trend was followed by an overall decrease to 17,038 in 2000. Since then, there was a general increase to 24,435 in 2007, followed by an 18 percent one-year decrease to 19,974 vehicles stolen in 2008 (Appendix Table 1). This equates to 1 in every 117 registered motor vehicles. In terms of dollar amount, the value of these stolen vehicles was estimated at over \$144 million and represented over half (56%) of the value of total property stolen (not shown).

Figure 12
VEHICLE THEFT SHOWS GREATEST
ONE-YEAR DECREASE OF ALL
PROPERTY CRIMES



SOURCE: SANDAG

Across the jurisdictions (with numbers large enough for comparison), all but 2 reported one-year decreases in the number of motor vehicle thefts, ranging from 6 percent to 53 percent (Appendix Tables 13 and 14). These decreases may reflect the success of targeting car prowlers at night in specific neighborhoods, as well as efforts undertaken by the Regional Auto Theft Task Force (RATT).

Arson

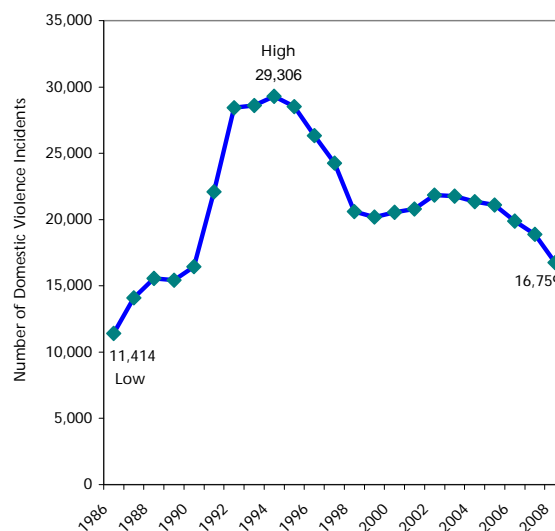
Unlike other FBI Index offenses, when arson is committed in concert with another FBI Index offense, both incidents must be reported, which is why arson is presented separately from other property crime statistics. There were 411 arsons reported in 2008, which was lower than in 2007 (when there were 458) (Appendix Tables 13 and 14). Forty-six percent (46%) of arsons in 2008 were of structures and 54 percent were categorized as mobile and other non-structural property types (not shown).

DOMESTIC VIOLENCE

Law enforcement agencies also track domestic violence incidents, some of which are included in the previously reported numbers in this bulletin. For example, a domestic violence incident could include a Part I violent crime (e.g., aggravated assault) or some type of property crime (e.g., burglary). Since 1986, when mandatory reporting was enacted, the number of domestic violence incidents has varied from a low of 11,414 in that first year to a high of 29,306 in 1994 (Figure 13). In 2008, 16,759 domestic violence incidents were reported. This 2008 number represented the sixth consecutive annual decrease.

Across nine of the jurisdictions¹⁰, five agencies reported one-year increases in the number of domestic violence incidents (ranging from 3% to 19%) and four reported decreases (ranging from 4% to 28%) (Appendix Table 9).

Figure 13
DOMESTIC VIOLENCE DOWN FOR
SIXTH CONSECUTIVE YEAR



SOURCE: SANDAG

HATE CRIMES

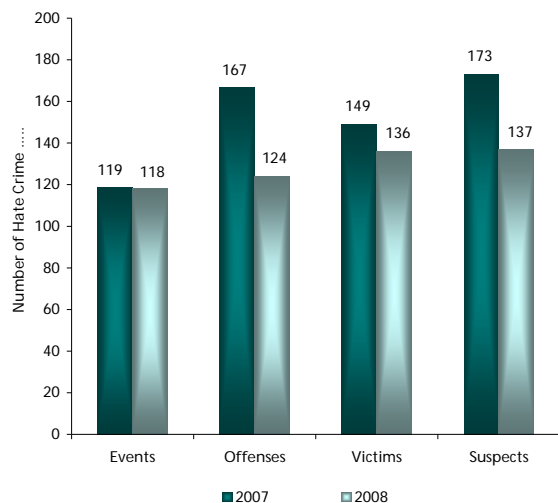
As part of California Penal code, the Attorney General is required to submit an annual report to the Legislature regarding crimes motivated by a bias related to a victim's race, ethnicity, religion, gender, sexual orientation, national origin, or physical or mental disability. For the first time in 2008, SANDAG asked local law enforcement agencies to share hate crime reports that were to be submitted to the State to allow for the reporting of more timely statistics, as well as

¹⁰ The number of domestic violence incidents reported by the Sheriff's Department in 2008 may be an underestimate due to issues currently being investigated. As such, percentage changes are not highlighted in this text for the contract cities or unincorporated areas of the county and future reports will include updated numbers.

more detailed analysis for San Diego County not available in the State report.¹¹

According to California Penal code, a hate crime is a criminal act committed in whole or in part because of the actual or perceived characteristics of the victim (described previously). Thus, hate crimes are not separate distinct crimes, but rather traditional offenses motivated by the offender's bias. More than 1 offense may be reported for each hate crime event. In 2008, a total of 118 hate crime events were reported by law enforcement from across the region, which included a total of 124 offenses, 136 victims, and 137 known suspects (Figure 14).

Figure 14
ABOUT ONE HATE CRIME REPORTED EVERY THREE DAYS IN THE SAN DIEGO REGION IN 2008



SOURCE: SANDAG; California Department of Justice, Criminal Justice Statistics Center

Compared to 2007 numbers reported by the California Attorney General's Office for San Diego County, the number of events was almost unchanged, but the number of offenses decreased (by 26%). In 2008, hate crimes were reported by police departments in Chula Vista, El Cajon, Escondido,

¹¹ These hate crime data should be considered preliminary, dependent upon final verification with the Department of Justice when their data are released.

Oceanside, and San Diego; the Sheriff's Department (for the jurisdictions of Encinitas, Imperial Beach, Poway, San Marcos, Santee, Vista, Fallbrook, and the unincorporated area); and by San Diego State University (SDSU) (not shown).

Other information compiled for this summary includes the following:

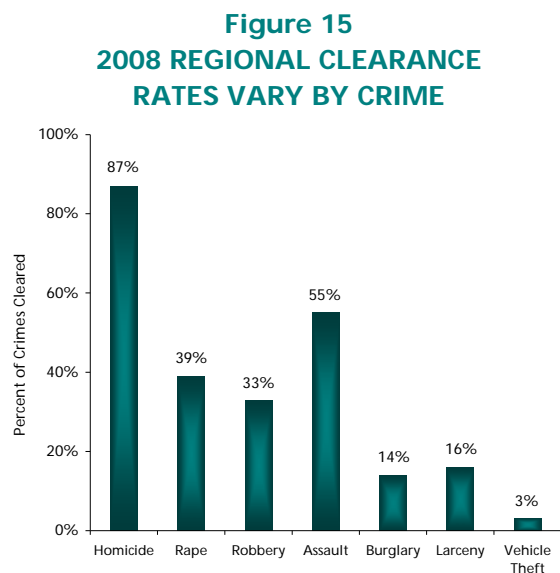
- Of the 118 events, almost two-thirds (63%) appeared motivated by the victim's race, ethnicity, or national origin; 22 percent by sexual orientation; and 15 percent by religion. Of the 74 cases related to the victim's actual or perceived race/ethnicity/national origin, 64 percent were described as being anti-Black and 18 percent as anti-Hispanic¹².
- Of the 118 events, the type of victim in more than three-quarters (78%) was an individual (or multiple individuals), 9 percent involved a business or financial institution, 5 percent government property, 5 percent a religious organization, and 3 percent were described as other.
- Of 107 events where location was noted, 35 percent occurred on a highway, road, alley, or street; 20 percent at a residence, home, or driveway; 11 percent in a parking lot or garage; 10 percent at a school or college; 7 percent at a church, synagogue, or temple; and 18 percent at other locations.
- Of the 124 offenses, 58 percent were described as violent, which included 24 simple assaults, 21 aggravated assaults, 21 acts of intimidation, and 6 robberies. For the property-related offenses (42%), 50 were vandalism or the destruction of property, 1 burglary, and 1 larceny (not shown).

¹² These data are consistent with data from the State for 2007. According to the Attorney General, race/ethnicity/national origin hate crime offenses have consistently been the largest bias motivation category of hate crimes, with anti-Black accounting for the largest percent within this category.

CLEARANCE RATES

A crime is cleared or solved for reporting purposes when at least 1 person is arrested and charged with the offense¹³. Not surprisingly, the clearance rates in 2008 varied by crime type, with violent crimes cleared more frequently than property crimes. Overall, 47 percent of violent crimes that were open for investigation in the region were cleared (with a range across departments of 22% to 66%), compared to 13 percent of property crimes (with a range of 9% to 22%) (Appendix Tables 15 and 16).

As Figure 15 shows, the crimes of homicide and aggravated assault have the highest clearance rates. This is due to the fact that these crimes receive maximum resources given the seriousness of the crime and involvement of individuals with face-to-face contact. While the motor vehicle theft clearance rate is the lowest of the seven Part I crimes, it is important to note that the vehicle recovery rate is considerably higher (56%)¹⁴ (not shown).



SOURCE: SANDAG

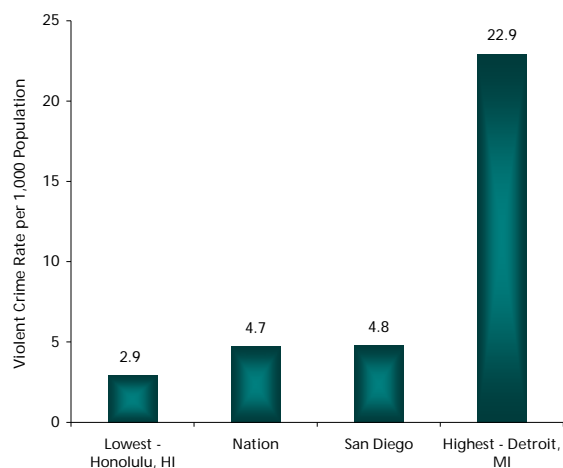
¹³ It is important to note that a crime can occur in one calendar year, but be cleared in that year or a future year.

¹⁴ Motor vehicles represented 56 percent of stolen property in terms of dollar value, but 91 percent of the value of recovered property in 2008.

HOW DOES SAN DIEGO COMPARE TO OTHER U.S. CITIES?

National information for crime rates for 31 U.S. cities (rather than counties or regions) with populations of 500,000 or more is currently available for calendar year 2007 (1 year prior to the other statistics presented in this report). In 2007, the City of San Diego¹⁵ was the seventh largest city in the U.S., with a population of almost 1.32 million. As Figures 16 and 17 show, the City of San Diego was one of the safest places to live, compared to other large metropolitan areas in terms of both violent crime (fourth lowest, following Honolulu, HI, San Jose, CA, and El Paso, TX) and property crime (sixth lowest, following New York, NY, San Jose, CA, Los Angeles, CA, Chicago, IL, and El Paso, TX). In 2006, San Diego was ranked fifth safest in both categories (not shown).

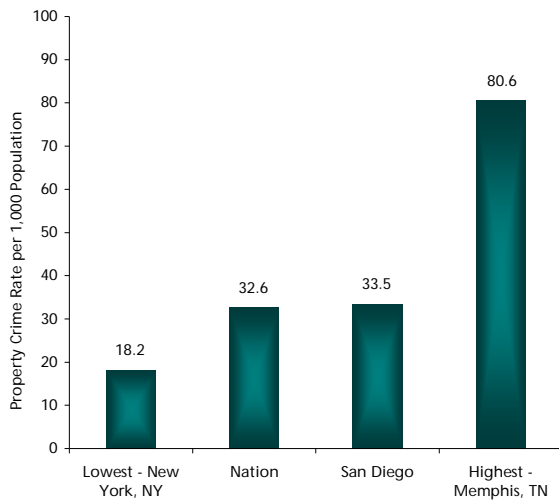
Figure 16
CITY OF SAN DIEGO'S 2007 VIOLENT CRIME FOURTH LOWEST IN NATION



SOURCES: SANDAG; U.S. Department of Justice

¹⁵ In 2007, 46 percent of the region's violent crime and 49 percent of the property crime were reported by the San Diego Police Department.

Figure 17
CITY OF SAN DIEGO'S 2007 PROPERTY
CRIME RATE SIXTH LOWEST IN NATION



SOURCES: SANDAG; U.S. Department of Justice

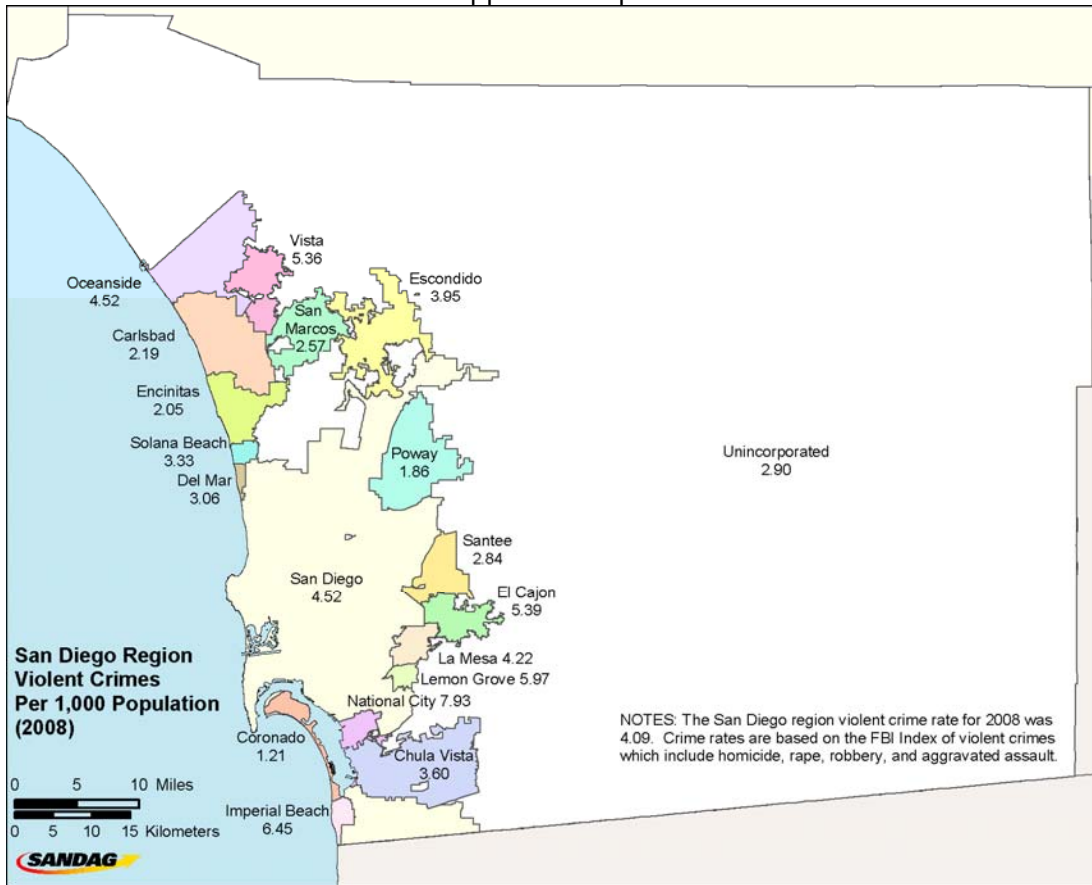
SUMMARY

Compared to 25 years earlier, the San Diego region is a safer place to live in terms of both violent and property crime. Local law enforcement is committed to continuing to effectively collaborate to identify and address crime issues in our communities, which are of growing importance during the economically uncertain times that may lie ahead.

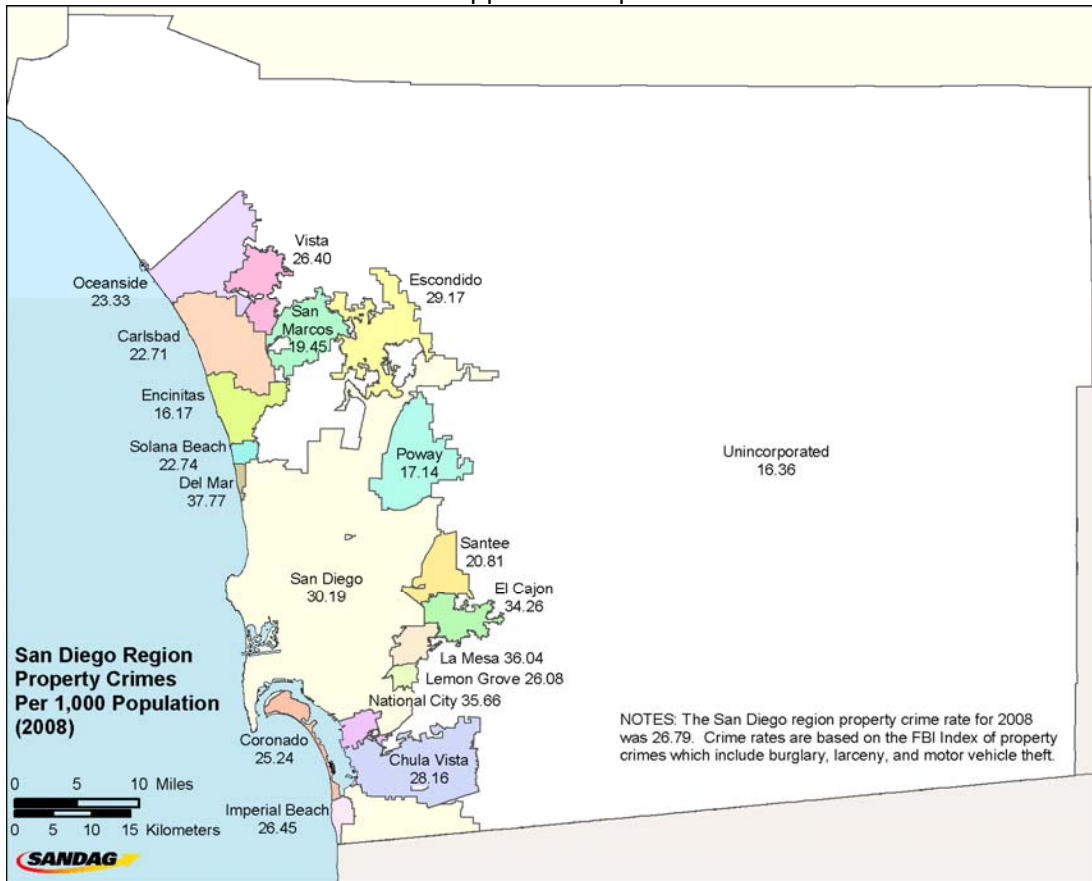
For those interested in more detailed 2008 statistics, please contact Donna Allnutt at (619) 699-6912. For those interested in more recent statistics for a specific area of San Diego County, as well as maps of specific areas, please visit the ARJIS (Automated Regional Justice Information System) Web site at www.arjis.org. The next CJ Bulletin in the 2009 series, *Public Safety Budgets in the San Diego Region, FY 2009*, will include a survey of local law enforcement regarding how recent and anticipated budget cuts may affect service delivery in the region and is scheduled for release this summer.

APPENDIX

Appendix Map 1



Appendix Map 2



Appendix Table 1
NUMBER OF CRIMES BY OFFENSE
San Diego Region, 2004, 2007, and 2008

	2004	2007	2008	Change	
				2004-2008	2007-2008
Homicide	128	106	90	-30%	-15%
Rape	797	704	845	6%	20%
Robbery	3,588	4,387	4,018	12%	-8%
Aggravated Assault	9,367	8,467	7,920	-15%	-6%
Violent Crime Total	13,880	13,664	12,873	-7%	-6%
Burglary	17,545	16,710	16,931	-3%	1%
Larceny Theft	55,669	48,679	47,390	-15%	-3%
Motor Vehicle Theft	24,172	24,435	19,974	-17%	-18%
Property Crime Total	97,386	89,824	84,295	-13%	-6%
FBI INDEX	111,266	103,488	97,168	-13%	-6%

SOURCE: SANDAG

Appendix Table 2
FBI INDEX CRIME RATE PER 1,000 POPULATION BY JURISDICTION
San Diego Region, 2004, 2007, and 2008

	2004	2007	2008	Change	
				2004-2008	2007-2008
Carlsbad	26.25	27.28	24.90	-5%	-9%
Chula Vista	38.59	35.99	31.76	-18%	-12%
Coronado	26.29	24.47	26.45	1%	8%
El Cajon	49.19	45.69	39.65	-19%	-13%
Escondido	45.12	35.14	33.12	-27%	-6%
La Mesa	43.07	43.87	40.25	-7%	-8%
National City	58.11	42.41	43.58	-25%	3%
Oceanside	41.29	31.11	27.85	-33%	-10%
San Diego	40.32	38.33	34.72	-14%	-9%
Sheriff - Total	26.55	22.71	22.51	-15%	-1%
Del Mar	46.22	51.61	40.83	-12%	-21%
Encinitas	22.43	20.59	18.23	-19%	-11%
Imperial Beach	39.03	30.77	32.91	-16%	7%
Lemon Grove	42.36	29.45	32.06	-24%	9%
Poway	18.28	16.77	19.00	4%	13%
San Marcos	26.10	24.49	22.02	-16%	-10%
Santee	25.83	23.32	23.65	-8%	1%
Solana Beach	27.62	22.12	26.07	-6%	18%
Vista	35.74	28.14	31.75	-11%	13%
Unincorporated	23.46	20.32	19.26	-18%	-5%
4S Ranch	n/a	n/a	9.48	--	--
Alpine	25.28	23.67	21.72	-14%	-8%
Fallbrook	26.16	23.88	18.84	-28%	-21%
Lakeside	26.80	21.50	20.90	-22%	-3%
Ramona	15.18	12.75	15.24	<1%	20%
Spring Valley	28.98	26.27	25.57	-12%	-3%
Valley Center	26.03	25.73	22.66	-13%	-12%
TOTAL	36.93	33.38	30.88	-16%	-7%

NOTES: The FBI Crime Index includes homicide, rape, robbery, aggravated assault, burglary, larceny, and motor vehicle theft. "Sheriff-Total" includes the contract cities and the unincorporated area served by the San Diego County Sheriff's Department, as well as crimes reported in the Sheriff's new "other" category that includes the Sheriff's detention facilities, courts staffed by the Sheriff, and crimes reported to the Sheriff that were determined to have occurred in a city not served by the Sheriff, or a location for which jurisdiction could not be determined. Camp Pendleton is not included. "Unincorporated" includes 4S Ranch (2008), Alpine, Fallbrook, Lakeside, Ramona, Spring Valley, and Valley Center, as well as the unincorporated areas for which crime data are not individually shown (Campo, Julian, Pine Valley, Ranchita, and the unincorporated areas of Encinitas, Imperial Beach, Lemon Grove, Poway, San Marcos, Santee, and Vista). Unincorporated statistics have also been updated to exclude crimes now categorized in the Sheriff's "other" category. Percent changes are based on computed crime rates rounded to the precision level of two decimal places. Populations used to compute crime rates reflect the most current California Department of Finance estimates.

SOURCES: California Department of Finance; SANDAG Estimates August 2008

Appendix Table 3
VIOLENT CRIME RATE PER 1,000 POPULATION BY JURISDICTION
San Diego Region, 2004, 2007, and 2008

	2004	2007	2008	Change	
				2004-2008	2007-2008
Carlsbad	2.91	3.14	2.19	-25%	-30%
Chula Vista	4.02	4.04	3.60	-10%	-11%
Coronado	1.54	1.13	1.21	--	--
El Cajon	5.58	5.08	5.39	-3%	6%
Escondido	4.82	4.63	3.95	-18%	-15%
La Mesa	3.57	4.18	4.22	18%	1%
National City	7.52	6.93	7.93	5%	14%
Oceanside	5.92	5.15	4.52	-24%	-12%
San Diego	5.23	4.80	4.52	-14%	-6%
Sheriff - Total	3.63	3.82	3.47	-4%	-9%
Del Mar	2.86	3.95	3.06	--	--
Encinitas	2.40	2.51	2.05	-15%	-18%
Imperial Beach	6.83	5.66	6.45	-6%	14%
Lemon Grove	6.64	6.24	5.97	-10%	-4%
Poway	1.48	2.01	1.86	25%	-7%
San Marcos	3.74	3.59	2.57	-31%	-28%
Santee	3.05	2.66	2.84	-7%	6%
Solana Beach	2.69	1.94	3.33	--	--
Vista	4.95	5.53	5.36	8%	-3%
Unincorporated	3.05	3.39	2.90	-5%	-14%
4S Ranch	n/a	n/a	0.54	--	--
Alpine	3.41	3.24	3.06	-10%	-6%
Fallbrook	2.28	3.71	2.28	<-1%	-39%
Lakeside	2.84	4.32	3.77	33%	-13%
Ramona	2.15	3.14	2.46	14%	-22%
Spring Valley	5.47	4.85	4.53	-17%	-7%
Valley Center	4.18	5.27	4.53	8%	-14%
TOTAL	4.61	4.41	4.09	-11%	-7%

NOTES: FBI Index violent crimes include homicide, rape, robbery, and aggravated assault. "Sheriff-Total" includes the contract cities and the unincorporated area served by the San Diego County Sheriff's Department, as well as crimes reported in the Sheriff's new "other" category that includes the Sheriff's detention facilities, courts staffed by the Sheriff, and crimes reported to the Sheriff that were determined to have occurred in a city not served by the Sheriff, or a location for which jurisdiction could not be determined. Camp Pendleton is not included. "Unincorporated" includes 4S Ranch (2008), Alpine, Fallbrook, Lakeside, Ramona, Spring Valley, and Valley Center, as well as the unincorporated areas for which crime data are not individually shown (Campo, Julian, Pine Valley, Ranchita, and the unincorporated areas of Encinitas, Imperial Beach, Lemon Grove, Poway, San Marcos, Santee, and Vista). Unincorporated statistics have also been updated to exclude crimes now categorized in the Sheriff's "other" category. Percent changes are based on computed crime rates rounded to the precision level of two decimal places. Percent changes are not presented if either comparison number used to compute the crime rate equals 30 or less. Populations used to compute crime rates reflect the most current California Department of Finance estimates.

SOURCES: California Department of Finance; SANDAG Estimates August 2008

Appendix Table 4
PROPERTY CRIME RATE PER 1,000 POPULATION BY JURISDICTION
San Diego Region, 2004, 2007, and 2008

	2004	2007	2008	Change	
				2004-2008	2007-2008
Carlsbad	23.33	24.14	22.71	-3%	-6%
Chula Vista	34.57	31.94	28.16	-19%	-12%
Coronado	24.75	23.34	25.24	2%	8%
El Cajon	43.61	40.61	34.26	-21%	-16%
Escondido	40.30	30.51	29.17	-28%	-4%
La Mesa	39.50	39.69	36.04	-9%	-9%
National City	50.59	35.47	35.66	-30%	1%
Oceanside	35.37	25.96	23.33	-34%	-10%
San Diego	35.09	33.52	30.19	-14%	-10%
Sheriff - Total	22.92	18.88	19.03	-17%	1%
Del Mar	43.36	47.66	37.77	-13%	-21%
Encinitas	20.03	18.07	16.17	-19%	-11%
Imperial Beach	32.20	25.10	26.45	-18%	5%
Lemon Grove	35.72	23.21	26.08	-27%	12%
Poway	16.80	14.77	17.14	2%	16%
San Marcos	22.36	20.90	19.45	-13%	-7%
Santee	22.78	20.65	20.81	-9%	1%
Solana Beach	24.93	20.18	22.74	-9%	13%
Vista	30.80	22.62	26.40	-14%	17%
Unincorporated	20.41	16.93	16.36	-20%	-3%
4S Ranch	n/a	n/a	8.95	--	--
Alpine	21.87	20.43	18.66	-15%	-9%
Fallbrook	23.87	20.18	16.56	-31%	-18%
Lakeside	23.96	17.18	17.13	-29%	<-1%
Ramona	13.03	9.61	12.78	-2%	33%
Spring Valley	23.51	21.42	21.04	-11%	-2%
Valley Center	21.85	20.46	18.12	-17%	-11%
TOTAL	32.32	28.97	26.79	-17%	-8%

NOTES: FBI Index property crimes include larceny, burglary, and motor vehicle theft. "Sheriff-Total" includes the contract cities and the unincorporated area served by the San Diego County Sheriff's Department, as well as crimes reported in the Sheriff's new "other" category that includes the Sheriff's detention facilities, courts staffed by the Sheriff, and crimes reported to the Sheriff that were determined to have occurred in a city not served by the Sheriff, or a location for which jurisdiction could not be determined. Camp Pendleton is not included. "Unincorporated" includes 4S Ranch (2008), Alpine, Fallbrook, Lakeside, Ramona, Spring Valley, and Valley Center, as well as the unincorporated areas for which crime data are not individually shown (Campo, Julian, Pine Valley, Ranchita, and the unincorporated areas of Encinitas, Imperial Beach, Lemon Grove, Poway, San Marcos, Santee, and Vista). Unincorporated statistics have also been updated to exclude crimes now categorized in the Sheriff's "other" category. Percent changes are based on computed crime rates rounded to the precision level of two decimal places. Populations used to compute crime rates reflect the most current California Department of Finance estimates.

SOURCES: California Department of Finance; SANDAG Estimates August 2008

**Appendix Table 5
NUMBER OF FBI INDEX CRIMES BY JURISDICTION
San Diego Region, 2004, 2007, and 2008**

	2004	2007	2008	Change	
				2004-2008	2007-2008
Carlsbad	2,433	2,766	2,585	6%	-7%
Chula Vista	8,052	8,200	7,346	-9%	-10%
Coronado	699	562	611	-13%	9%
El Cajon	4,804	4,446	3,883	-19%	-13%
Escondido	6,331	4,986	4,749	-25%	-5%
La Mesa	2,412	2,469	2,281	-5%	-8%
National City	3,255	2,593	2,667	-18%	3%
Oceanside	7,138	5,498	4,980	-30%	-9%
San Diego	52,217	50,498	46,412	-11%	-8%
Sheriff - Total	22,076	19,471	19,583	-11%	1%
Del Mar	210	235	187	-11%	-20%
Encinitas	1,401	1,303	1,164	-17%	-11%
Imperial Beach	1,085	853	928	-14%	9%
Lemon Grove	1,084	750	821	-24%	9%
Poway	924	853	971	5%	14%
San Marcos	1,745	1,956	1,822	4%	-7%
Santee	1,397	1,287	1,326	-5%	3%
Solana Beach	370	297	352	-5%	19%
Vista	3,361	2,674	3,041	-10%	14%
Unincorporated	10,140	8,983	8,643	-15%	-4%
4S Ranch	n/a	79	159	--	--
Alpine	704	686	639	-9%	-7%
Fallbrook	1,294	1,199	960	-26%	-20%
Lakeside	1,417	1,145	1,130	-20%	-1%
Ramona	536	455	552	3%	21%
Spring Valley	2,046	1,862	1,840	-10%	-1%
Valley Center	548	576	515	-6%	-11%
Other Sheriff	359	280	328	-9%	17%
California Highway Patrol	127	133	186	46%	40%
California State University San Marcos	52	66	65	25%	-2%
San Diego State University	589	618	686	16%	11%
University of California San Diego	648	476	521	-20%	9%
San Diego Harbor Police	347	602	549	58%	-9%
California State Parks	86	104	64	-26%	-38%
TOTAL	111,266	103,488	97,168	-13%	-6%

NOTES: The FBI Crime Index includes homicide, rape, robbery, aggravated assault, burglary, larceny, and motor vehicle theft. "Sheriff-Total" includes the contract cities and the unincorporated area served by the San Diego County Sheriff's Department, as well as crimes reported in the Sheriff's new "other" category that includes the Sheriff's detention facilities, courts staffed by the Sheriff, and crimes reported to the Sheriff that were determined to have occurred in a city not served by the Sheriff or a location for which jurisdiction could not be determined. Camp Pendleton is not included. "Unincorporated" includes 4S Ranch (6 months of 2007 and all of 2008), Alpine, Fallbrook, Lakeside, Ramona, Spring Valley, and Valley Center, as well as the unincorporated areas for which crime data are not individually shown (Campo, Julian, Pine Valley, Ranchita, and the unincorporated areas of Encinitas, Imperial Beach, Lemon Grove, Poway, San Marcos, Santee, and Vista). Unincorporated statistics have also been updated to exclude crimes now categorized in the Sheriff's "other" category.

SOURCE: SANDAG

**Appendix Table 6
NUMBER OF VIOLENT CRIMES BY JURISDICTION
San Diego Region, 2004, 2007, and 2008**

	2004	2007	2008	Change	
				2004-2008	2007-2008
Carlsbad	270	318	227	-16%	-29%
Chula Vista	838	921	832	-1%	-10%
Coronado	41	26	28	--	--
El Cajon	545	494	528	-3%	7%
Escondido	676	657	567	-16%	-14%
La Mesa	200	235	239	20%	2%
National City	421	424	485	15%	14%
Oceanside	1,023	910	808	-21%	-11%
San Diego	6,774	6,331	6,047	-11%	-4%
Sheriff - Total	3,022	3,279	3,022	0%	-8%
Del Mar	13	18	14	--	--
Encinitas	150	159	131	-13%	-18%
Imperial Beach	190	157	182	-4%	16%
Lemon Grove	170	159	153	-10%	-4%
Poway	75	102	95	27%	-7%
San Marcos	250	287	213	-15%	-26%
Santee	165	147	159	-4%	8%
Solana Beach	36	26	45	25%	--
Vista	465	525	513	10%	-2%
Unincorporated	1,317	1,498	1,303	-1%	-13%
4S Ranch	n/a	9	9	--	--
Alpine	95	94	90	-5%	-4%
Fallbrook	113	186	116	3%	-38%
Lakeside	150	230	204	36%	-11%
Ramona	76	112	89	17%	-21%
Spring Valley	386	344	326	-16%	-5%
Valley Center	88	118	103	17%	-13%
Other Sheriff	191	201	214	12%	6%
California Highway Patrol	15	8	18	--	--
California State University San Marcos	3	0	4	--	--
San Diego State University	24	30	37	--	--
University of California San Diego	6	5	6	--	--
San Diego Harbor Police	17	21	22	--	--
California State Parks	5	5	3	--	--
TOTAL	13,880	13,664	12,873	-7%	-6%

NOTES: FBI Index violent crimes include homicide, rape, robbery, and aggravated assault. "Sheriff-Total" includes the contract cities and the unincorporated area served by the San Diego County Sheriff's Department, as well as crimes reported in the Sheriff's new "other" category that includes the Sheriff's detention facilities, courts staffed by the Sheriff, and crimes reported to the Sheriff that were determined to have occurred in a city not served by the Sheriff or a location for which jurisdiction could not be determined. Camp Pendleton is not included. "Unincorporated" includes 4S Ranch (6 months of 2007 and all of 2008), Alpine, Fallbrook, Lakeside, Ramona, Spring Valley, and Valley Center, as well as the unincorporated areas for which crime data are not individually shown (Campo, Julian, Pine Valley, Ranchita, and the unincorporated areas of Encinitas, Imperial Beach, Lemon Grove, Poway, San Marcos, Santee, and Vista). Unincorporated statistics have also been updated to exclude crimes now categorized in the Sheriff's "other" category. Percent changes are not presented if either comparison number equals 30 or less.

SOURCE: SANDAG

Appendix Table 7
NUMBER OF PROPERTY CRIMES BY JURISDICTION
San Diego Region, 2004, 2007, and 2008

	2004	2007	2008	Change	
				2004-2008	2007-2008
Carlsbad	2,163	2,448	2,358	9%	-4%
Chula Vista	7,214	7,279	6,514	-10%	-11%
Coronado	658	536	583	-11%	9%
El Cajon	4,259	3,952	3,355	-21%	-15%
Escondido	5,655	4,329	4,182	-26%	-3%
La Mesa	2,212	2,234	2,042	-8%	-9%
National City	2,834	2,169	2,182	-23%	1%
Oceanside	6,115	4,588	4,172	-32%	-9%
San Diego	45,443	44,167	40,365	-11%	-9%
Sheriff - Total	19,054	16,192	16,561	-13%	2%
Del Mar	197	217	173	-12%	-20%
Encinitas	1,251	1,144	1,033	-17%	-10%
Imperial Beach	895	696	746	-17%	7%
Lemon Grove	914	591	668	-27%	13%
Poway	849	751	876	3%	17%
San Marcos	1,495	1,669	1,609	8%	-4%
Santee	1,232	1,140	1,167	-5%	2%
Solana Beach	334	271	307	-8%	13%
Vista	2,896	2,149	2,528	-13%	18%
Unincorporated	8,823	7,485	7,340	-17%	-2%
4S Ranch	n/a	70	150	--	--
Alpine	609	592	549	-10%	-7%
Fallbrook	1,181	1,013	844	-29%	-17%
Lakeside	1,267	915	926	-27%	1%
Ramona	460	343	463	1%	35%
Spring Valley	1,660	1,518	1,514	-9%	<-1%
Valley Center	460	458	412	-10%	-10%
Other Sheriff	168	79	114	-32%	44%
California Highway Patrol	112	125	168	50%	34%
California State University San Marcos	49	66	61	24%	-8%
San Diego State University	565	588	649	15%	10%
University of California San Diego	642	471	515	-20%	9%
San Diego Harbor Police	330	581	527	60%	-9%
California State Parks	81	99	61	-25%	-38%
TOTAL	97,386	89,824	84,295	-13%	-6%

NOTES: FBI Index property crimes include larceny, burglary, and motor vehicle theft. "Sheriff-Total" includes the contract cities and the unincorporated area served by the San Diego County Sheriff's Department, as well as crimes reported in the Sheriff's new "other" category that includes the Sheriff's detention facilities, courts staffed by the Sheriff, and crimes reported to the Sheriff that were determined to have occurred in a city not served by the Sheriff or a location for which jurisdiction could not be determined. Camp Pendleton is not included. "Unincorporated" includes 4S Ranch (6 months of 2007 and all of 2008), Alpine, Fallbrook, Lakeside, Ramona, Spring Valley, and Valley Center, as well as the unincorporated areas for which crime data are not individually shown (Campo, Julian, Pine Valley, Ranchita, and the unincorporated areas of Encinitas, Imperial Beach, Lemon Grove, Poway, San Marcos, Santee, and Vista). Unincorporated statistics have also been updated to exclude crimes now categorized in the Sheriff's "other" category.

SOURCE: SANDAG

**Appendix Table 8
NUMBER OF CRIMES BY OFFENSE
San Diego Region, 1999-2008**

	Homicide	Rape	Robbery	Aggravated Assault	Residential Burglary	Non-Residential Burglary	Total Burglary	Larceny Over \$400	Larceny \$400 and Under	Total Larceny	Motor Vehicle Theft	FBI Crime Index	California Crime Index	Population
1999	106	810	3,468	9,915	8,772	6,458	15,230	15,820	35,263	51,083	17,113	97,725	46,642	2,751,000
2000	97	801	3,347	9,504	9,066	6,711	15,777	15,457	32,394	47,851	17,038	94,415	46,564	2,813,833
2001	92	830	3,430	10,237	9,681	7,044	16,725	17,164	34,156	51,320	19,421	102,055	50,735	2,863,657
2002	87	798	3,342	9,805	10,236	7,963	18,199	18,568	34,684	53,252	19,884	105,367	52,115	2,920,010
2003	130	856	3,375	9,646	10,706	8,187	18,893	18,179	36,102	54,281	23,460	110,641	56,360	2,971,805
2004	128	797	3,588	9,367	10,108	7,437	17,545	19,293	36,376	55,669	24,172	111,266	55,597	3,013,014
2005	98	814	3,943	8,996	9,948	7,720	17,668	19,892	34,309	54,201	25,755	111,475	57,274	3,038,074
2006	126	777	4,313	8,362	9,783	8,072	17,855	19,657	31,797	51,454	24,046	106,933	55,479	3,065,077
2007	106	704	4,387	8,467	9,455	7,255	16,710	18,750	29,929	48,679	24,435	103,488	54,809	3,100,132
2008	90	845	4,018	7,920	9,936	6,995	16,931	18,418	28,972	47,390	19,974	97,168	49,778	3,146,274

NOTES: The FBI Crime Index includes homicide, rape, robbery, and aggravated assault in the violent category and burglary, larceny, and motor vehicle theft in the property category. The California Crime Index includes all FBI offenses except larceny.

SOURCES: California Department of Finance; U.S. Census 2000; SANDAG crime statistics; SANDAG Population Estimates August 2008

Appendix Table 9
NUMBER OF DOMESTIC VIOLENCE INCIDENTS BY JURISDICTION
San Diego Region, 2004, 2007, and 2008

	2004	2007	2008	Change	
				2004-2008	2007-2008
Carlsbad	360	438	382	6%	-13%
Chula Vista	1,818	1,818	1,613	-11%	-11%
Coronado	58	83	99	71%	19%
El Cajon	672	537	555	-17%	3%
Escondido	898	930	987	10%	6%
La Mesa	365	347	394	8%	14%
National City	624	351	366	-41%	4%
Oceanside	2,070	2,405	1,726	-17%	-28%
San Diego	10,033	8,137	7,829	-22%	-4%
Sheriff - Total	4,407	3,718	2,675	-39%	-28%
Del Mar	14	9	9	--	--
Encinitas	208	177	146	-30%	-18%
Imperial Beach	297	170	168	-43%	-1%
Lemon Grove	191	163	101	-47%	-38%
Poway	204	145	121	-41%	-17%
San Marcos	359	291	224	-38%	-23%
Santee	322	275	174	-46%	-37%
Solana Beach	34	28	20	--	--
Vista	557	502	394	-29%	-22%
Unincorporated	2,221	1,958	1,318	-41%	-33%
TOTAL	21,351	18,874	16,759	-22%	-11%

NOTES: "Sheriff-Total" includes the contract cities and the unincorporated area served by the San Diego County Sheriff's Department. Camp Pendleton is not included. "Unincorporated" includes 4S Ranch (6 months of 2007 and all of 2008), Alpine, Fallbrook, Lakeside, Ramona, Spring Valley, and Valley Center, as well as the unincorporated areas for which crime data are not individually shown (Campo, Julian, Pine Valley, Ranchita, and the unincorporated areas of Encinitas, Imperial Beach, Lemon Grove, Poway, San Marcos, Santee, and Vista). The individual unincorporated areas in the Sheriff's jurisdiction are not required to report domestic violence to the State Department of Justice. Region total includes a relatively small number of incidents reported by the San Diego Harbor Police, California Highway Patrol, California State Parks, California State University San Marcos, San Diego State University, and University of California San Diego. Percent changes are not presented if either comparison number equals 30 or less.

SOURCE: SANDAG

**Appendix Table 10
NUMBER OF CRIMES BY OFFENSE BY JURISDICTION
San Diego Region, 2004**

	Homicide	Rape	Robbery	Aggravated Assault	Residential Burglary	Non-Residential Burglary	Total Burglary	Larceny Over \$400	Larceny \$400 and Under	Total Larceny	Motor Vehicle Theft	Arson	FBI Crime Index	California Crime Index
Carlsbad	2	13	42	213	253	204	457	502	974	1,476	230	8	2,433	957
Chula Vista	15	50	296	477	687	497	1,184	1,252	2,735	3,987	2,043	31	8,052	4,065
Coronado	0	10	15	16	74	41	115	108	347	455	88	1	699	244
El Cajon	7	21	164	353	395	420	815	736	1,618	2,354	1,090	32	4,804	2,450
Escondido	3	22	198	453	412	373	785	1,026	2,268	3,294	1,576	35	6,331	3,037
La Mesa	0	10	72	118	183	210	393	399	886	1,285	534	5	2,412	1,127
National City	5	16	139	261	135	255	390	366	1,178	1,544	900	15	3,255	1,711
Oceanside	9	77	289	648	706	419	1,125	1,181	2,985	4,166	824	33	7,138	2,972
San Diego	62	373	1,650	4,689	4,495	2,810	7,305	9,399	15,769	25,168	12,970	191	52,217	27,049
Sheriff - Total	25	192	709	2,096	2,713	2,119	4,832	3,802	6,711	10,513	3,709	160	22,076	11,563
Del Mar	0	2	3	8	14	15	29	78	63	141	27	0	210	69
Encinitas	2	15	38	95	145	140	285	298	503	801	165	6	1,401	600
Imperial Beach	1	8	48	133	137	99	236	124	332	456	203	23	1,085	629
Lemon Grove	1	7	47	115	83	150	233	115	338	453	228	5	1,084	631
Poway	0	4	10	61	83	107	190	202	359	561	98	13	924	363
San Marcos	1	17	61	171	148	198	346	264	580	844	305	12	1,745	901
Santee	1	16	44	104	103	135	238	260	530	790	204	4	1,397	607
Solana Beach	0	0	17	19	25	47	72	111	98	209	53	1	370	161
Vista	3	28	162	272	473	268	741	567	1,069	1,636	519	16	3,361	1,725
Unincorporated	16	92	275	934	1,496	936	2,432	1,761	2,769	4,530	1,861	80	10,140	5,610
4S Ranch	n/a	n/a	n/a	n/a	n/a	n/a	n/a	n/a	n/a	n/a	n/a	n/a	n/a	n/a
Alpine	0	2	21	72	99	74	173	119	178	297	139	4	704	407
Fallbrook	1	13	22	77	248	124	372	229	426	655	154	7	1,294	639
Lakeside	3	14	28	105	173	146	319	238	433	671	277	0	1,417	746
Ramona	0	6	2	68	70	60	130	91	161	252	78	1	536	284
Spring Valley	9	12	110	255	242	165	407	273	483	756	497	0	2,046	1,290
Valley Center	1	8	26	53	76	70	146	99	113	212	102	11	548	336
Other Sheriff	0	3	4	184	6	24	30	22	70	92	46	0	359	267
California Highway Patrol	0	0	0	15	0	3	3	2	36	38	71	0	127	89
California State University San Marcos	0	2	0	1	3	4	7	4	38	42	0	0	52	10
San Diego State University	0	9	6	9	19	31	50	162	270	432	83	6	589	157
University of California San Diego	0	2	1	3	32	31	63	157	375	532	47	4	648	116
San Diego Harbor Police	0	0	7	10	0	12	12	167	150	317	1	1	347	30
California State Parks	0	0	0	5	1	8	9	30	36	66	6	3	86	20
TOTAL	128	797	3,588	9,367	10,108	7,437	17,545	19,293	36,376	55,669	24,172	525	111,266	55,597

NOTES: The FBI Crime Index includes homicide, rape, robbery, and aggravated assault in the violent category and burglary, larceny, and motor vehicle theft in the property category. The California Crime Index (CCI) includes all FBI Index crimes except larceny. "Sheriff-Total" includes the contract cities and the unincorporated area served by the Sheriff, as well as crimes reported in the Sheriff's new "other" category that includes the Sheriff's detention facilities, courts staffed by the Sheriff, and crimes reported to the Sheriff that occurred in a city not served by the Sheriff or a location for which jurisdiction could not be determined. Unincorporated statistics have also been updated to exclude crimes now categorized in the Sheriff's "other" category. (The Sheriff's area of 4S Ranch began reporting separately in July 2007.)

SOURCE: SANDAG

**Appendix Table 11
NUMBER OF CRIMES BY OFFENSE BY JURISDICTION
San Diego Region, 2005**

	Homicide	Rape	Robbery	Aggravated Assault	Residential Burglary	Non-Residential Burglary	Total Burglary	Larceny Over \$400	Larceny \$400 and Under	Total Larceny	Motor Vehicle Theft	Arson	FBI Crime Index	California Crime Index
Carlsbad	2	11	79	164	285	232	517	540	1,108	1,648	246	11	2,667	1,019
Chula Vista	5	66	338	518	626	609	1,235	1,277	2,481	3,758	2,496	23	8,416	4,658
Coronado	0	6	6	10	69	20	89	127	222	349	89	5	549	200
El Cajon	2	40	171	305	296	473	769	658	1,480	2,138	1,136	36	4,561	2,423
Escondido	2	31	186	473	399	402	801	996	2,035	3,031	1,079	37	5,603	2,572
La Mesa	2	10	107	82	190	138	328	453	892	1,345	556	6	2,430	1,085
National City	4	16	182	254	122	254	376	369	1,040	1,409	941	15	3,182	1,773
Oceanside	7	78	264	634	718	347	1,065	1,096	2,750	3,846	746	33	6,640	2,794
San Diego	51	376	1,862	4,314	4,611	2,851	7,462	9,771	14,842	24,613	14,138	233	52,816	28,203
Sheriff - Total	23	170	725	2,189	2,589	2,320	4,909	3,982	6,361	10,343	4,066	151	22,425	12,082
Del Mar	0	0	1	9	24	26	50	87	92	179	37	0	276	97
Encinitas	3	11	45	112	165	159	324	330	394	724	186	7	1,405	681
Imperial Beach	0	3	41	88	99	89	188	111	224	335	267	4	922	587
Lemon Grove	1	6	59	90	93	115	208	102	237	339	258	6	961	622
Poway	1	11	20	63	70	102	172	201	350	551	92	7	910	359
San Marcos	0	15	57	165	121	238	359	318	671	989	282	10	1,867	878
Santee	1	16	30	116	143	138	281	301	499	800	235	9	1,479	679
Solana Beach	0	1	12	11	48	39	87	81	98	179	46	1	336	157
Vista	4	21	190	315	404	367	771	547	1,074	1,621	579	29	3,501	1,880
Unincorporated	13	82	266	1,032	1,413	1,036	2,449	1,900	2,678	4,578	2,042	78	10,462	5,884
4S Ranch	n/a	n/a	n/a	n/a	n/a	n/a	n/a	n/a	n/a	n/a	n/a	n/a	n/a	n/a
Alpine	1	5	15	54	104	71	175	164	189	353	121	1	724	371
Fallbrook	0	11	43	123	259	203	462	260	499	759	177	7	1,575	816
Lakeside	0	13	34	169	169	138	307	289	426	715	309	0	1,547	832
Ramona	1	7	12	76	58	61	119	116	145	261	84	1	560	299
Spring Valley	7	14	77	227	245	135	380	275	466	741	572	0	2,018	1,277
Valley Center	1	9	6	63	62	101	163	114	116	230	106	13	578	348
Other Sheriff	0	4	4	188	9	11	20	4	44	48	42	0	306	258
California Highway Patrol	0	0	2	18	2	9	11	4	28	32	96	0	159	127
California State University San Marcos	0	1	0	2	1	7	8	9	43	52	2	0	65	13
San Diego State University	0	8	10	11	14	11	25	217	330	547	88	0	689	142
University of California San Diego	0	1	4	7	25	30	55	157	462	619	68	1	754	135
San Diego Harbor Police	0	0	7	10	0	9	9	204	177	381	1	2	408	27
California State Parks	0	0	0	5	1	8	9	32	58	90	7	2	111	21
TOTAL	98	814	3,943	8,996	9,948	7,720	17,668	19,892	34,309	54,201	25,755	555	111,475	57,274

NOTES: The FBI Crime Index includes homicide, rape, robbery, and aggravated assault in the violent category and burglary, larceny, and motor vehicle theft in the property category. The California Crime Index (CCI) includes all FBI Index crimes except larceny. "Sheriff-Total" includes the contract cities and the unincorporated area served by the Sheriff, as well as crimes reported in the Sheriff's new "other" category that includes the Sheriff's detention facilities, courts staffed by the Sheriff, and crimes reported to the Sheriff that occurred in a city not served by the Sheriff or a location for which jurisdiction could not be determined. Unincorporated statistics have also been updated to exclude crimes now categorized in the Sheriff's "other" category. (The Sheriff's area of 4S Ranch began reporting separately in July 2007.)

SOURCE: SANDAG

**Appendix Table 12
NUMBER OF CRIMES BY OFFENSE BY JURISDICTION
San Diego Region, 2006**

	Homicide	Rape	Robbery	Aggravated Assault	Residential Burglary	Non-Residential Burglary	Total Burglary	Larceny Over \$400	Larceny \$400 and Under	Total Larceny	Motor Vehicle Theft	Arson	FBI Crime Index	California Crime Index
Carlsbad	1	11	77	240	320	267	587	657	991	1,648	220	18	2,784	1,136
Chula Vista	7	70	351	519	687	497	1,184	1,321	2,496	3,817	2,033	41	7,981	4,164
Coronado	0	3	9	11	48	19	67	114	265	379	70	1	539	160
El Cajon	4	28	154	287	270	368	638	618	1,336	1,954	1,020	25	4,085	2,131
Escondido	3	33	235	442	407	351	758	885	1,802	2,687	962	17	5,120	2,433
La Mesa	3	8	111	113	222	225	447	480	979	1,459	591	16	2,732	1,273
National City	2	9	211	302	143	310	453	314	811	1,125	885	12	2,987	1,862
Oceanside	8	48	245	635	682	297	979	999	2,262	3,261	633	21	5,809	2,548
San Diego	68	348	2,164	3,811	4,491	3,255	7,746	9,824	14,301	24,125	13,338	185	51,600	27,475
Sheriff - Total	30	211	737	1,964	2,459	2,366	4,825	3,754	5,656	9,410	4,013	144	21,190	11,780
Del Mar	0	1	7	18	22	32	54	108	82	190	30	0	300	110
Encinitas	3	8	48	104	160	164	324	279	425	704	170	3	1,361	657
Imperial Beach	1	17	34	116	94	75	169	119	223	342	236	3	915	573
Lemon Grove	1	12	65	92	65	146	211	99	220	319	263	9	963	644
Poway	0	13	21	69	84	126	210	207	248	455	119	5	887	432
San Marcos	3	19	75	189	196	288	484	311	607	918	333	14	2,021	1,103
Santee	0	14	44	93	122	148	270	243	342	585	199	8	1,205	620
Solana Beach	1	0	12	13	31	46	77	68	92	160	40	1	303	143
Vista	1	34	152	259	383	346	729	541	981	1,522	587	19	3,284	1,762
Unincorporated	20	92	275	881	1,300	981	2,281	1,766	2,403	4,169	1,993	82	9,711	5,542
4S Ranch	n/a	n/a	n/a	n/a	n/a	n/a	n/a	n/a	n/a	n/a	n/a	n/a	n/a	n/a
Alpine	1	4	17	51	102	82	184	127	154	281	123	4	661	380
Fallbrook	2	11	46	84	179	163	342	329	461	790	153	7	1,428	638
Lakeside	2	16	32	150	151	120	271	233	318	551	268	0	1,290	739
Ramona	0	6	16	59	61	76	137	95	144	239	70	4	527	288
Spring Valley	2	14	84	184	256	177	433	268	460	728	638	0	2,083	1,355
Valley Center	4	7	15	57	55	77	132	100	152	252	68	3	535	283
Other Sheriff	0	1	4	130	2	14	16	13	33	46	43	0	240	194
California Highway Patrol	0	0	0	16	2	10	12	2	20	22	76	0	126	104
California State University San Marcos	0	1	0	1	0	6	6	6	33	39	1	0	48	9
San Diego State University	0	7	13	5	20	15	35	152	258	410	119	2	589	179
University of California San Diego	0	0	1	2	30	61	91	176	337	513	75	5	682	169
San Diego Harbor Police	0	0	5	11	1	23	24	334	219	553	2	0	595	42
California State Parks	0	0	0	3	1	2	3	21	31	52	8	1	66	14
TOTAL	126	777	4,313	8,362	9,783	8,072	17,855	19,657	31,797	51,454	24,046	488	106,933	55,479

NOTES: The FBI Crime Index includes homicide, rape, robbery, and aggravated assault in the violent category and burglary, larceny, and motor vehicle theft in the property category. The California Crime Index (CCI) includes all FBI Index crimes except larceny. "Sheriff-Total" includes the contract cities and the unincorporated area served by the Sheriff, as well as crimes reported in the Sheriff's new "other" category that includes the Sheriff's detention facilities, courts staffed by the Sheriff, and crimes reported to the Sheriff that occurred in a city not served by the Sheriff or a location for which jurisdiction could not be determined. Unincorporated statistics have also been updated to exclude crimes now categorized in the Sheriff's "other" category. (The Sheriff's area of 4S Ranch began reporting separately in July 2007.)

SOURCE: SANDAG

**Appendix Table 13
NUMBER OF CRIMES BY OFFENSE BY JURISDICTION
San Diego Region, 2007**

	Homicide	Rape	Robbery	Aggravated Assault	Residential Burglary	Non-Residential Burglary	Total Burglary	Larceny Over \$400	Larceny \$400 and Under	Total Larceny	Motor Vehicle Theft	Arson	FBI Crime Index	California Crime Index
Carlsbad	2	13	88	215	298	230	528	722	962	1,684	236	10	2,766	1,082
Chula Vista	8	57	396	460	637	456	1,093	1,276	2,514	3,790	2,396	28	8,200	4,410
Coronado	1	6	10	9	46	17	63	105	273	378	95	4	562	184
El Cajon	4	21	184	285	270	314	584	746	1,381	2,127	1,241	15	4,446	2,319
Escondido	4	28	280	345	456	352	808	827	1,601	2,428	1,093	23	4,986	2,558
La Mesa	0	7	125	103	188	192	380	496	859	1,355	499	8	2,469	1,114
National City	6	19	180	219	133	246	379	267	575	842	948	8	2,593	1,751
Oceanside	3	51	257	599	598	241	839	993	2,109	3,102	647	31	5,498	2,396
San Diego	58	296	2,095	3,882	4,500	3,179	7,679	9,162	14,102	23,264	13,224	200	50,498	27,234
Sheriff - Total	20	194	758	2,307	2,266	1,914	4,180	3,477	4,742	8,219	3,793	122	19,471	11,252
Del Mar	0	2	5	11	18	28	46	71	63	134	37	1	235	101
Encinitas	0	9	42	108	151	155	306	302	400	702	136	7	1,303	601
Imperial Beach	0	17	46	94	87	74	161	93	174	267	268	10	853	586
Lemon Grove	1	10	46	102	68	73	141	88	145	233	217	4	750	517
Poway	0	7	19	76	70	113	183	218	257	475	93	3	853	378
San Marcos	2	12	101	172	199	215	414	344	593	937	318	8	1,956	1,019
Santee	0	12	23	112	100	106	206	271	391	662	272	5	1,287	625
Solana Beach	0	2	10	14	33	41	74	80	66	146	51	2	297	151
Vista	4	24	170	327	333	261	594	418	620	1,038	517	6	2,674	1,636
Unincorporated	13	95	291	1,099	1,205	840	2,045	1,580	1,998	3,578	1,862	76	8,983	5,404
4S Ranch	0	0	1	8	16	10	26	20	14	34	10	0	79	45
Alpine	0	5	16	73	92	57	149	149	157	306	137	5	686	380
Fallbrook	1	6	46	133	138	134	272	218	351	569	172	8	1,199	630
Lakeside	3	14	28	185	133	88	221	221	269	490	204	0	1,145	655
Ramona	3	7	22	80	65	68	133	78	80	158	52	2	455	297
Spring Valley	2	24	102	216	222	166	388	229	348	577	553	0	1,862	1,285
Valley Center	0	7	11	100	76	64	140	105	119	224	94	6	576	352
Other Sheriff	0	4	5	192	2	8	10	12	35	47	22	0	280	233
California Highway Patrol	0	0	0	8	1	6	7	2	27	29	89	0	133	104
California State University San Marcos	0	0	0	0	3	5	8	15	40	55	3	0	66	11
San Diego State University	0	9	7	14	28	47	75	121	279	400	113	0	618	218
University of California San Diego	0	1	2	2	28	28	56	135	238	373	42	4	476	103
San Diego Harbor Police	0	0	4	17	3	26	29	353	196	549	3	1	602	53
California State Parks	0	2	1	2	0	2	2	53	31	84	13	4	104	20
TOTAL	106	704	4,387	8,467	9,455	7,255	16,710	18,750	29,929	48,679	24,435	458	103,488	54,809

NOTES: The FBI Crime Index includes homicide, rape, robbery, and aggravated assault in the violent category and burglary, larceny, and motor vehicle theft in the property category. The California Crime Index (CCI) includes all FBI Index crimes except larceny. "Sheriff-Total" includes the contract cities and the unincorporated area served by the Sheriff, as well as crimes reported in the Sheriff's new "other" category that includes the Sheriff's detention facilities, courts staffed by the Sheriff, and crimes reported to the Sheriff that occurred in a city not served by the Sheriff or a location for which jurisdiction could not be determined. Unincorporated statistics have also been updated to exclude crimes now categorized in the Sheriff's "other" category. (The Sheriff's area of 4S Ranch began reporting separately in July 2007.)

SOURCE: SANDAG

**Appendix Table 14
NUMBER OF CRIMES BY OFFENSE BY JURISDICTION
San Diego Region, 2008**

	Homicide	Rape	Robbery	Aggravated Assault	Residential Burglary	Non-Residential Burglary	Total Burglary	Larceny Over \$400	Larceny \$400 and Under	Total Larceny	Motor Vehicle Theft	Arson	FBI Crime Index	California Crime Index
Carlsbad	2	24	51	150	272	235	507	656	1,006	1,662	189	7	2,585	923
Chula Vista	6	55	321	450	633	375	1,008	1,285	2,054	3,339	2,167	27	7,346	4,007
Coronado	0	2	12	14	57	46	103	149	286	435	45	3	611	176
El Cajon	1	35	204	288	260	311	571	629	1,276	1,905	879	16	3,883	1,978
Escondido	4	31	195	337	464	434	898	867	1,538	2,405	879	18	4,749	2,344
La Mesa	0	14	122	103	189	116	305	509	894	1,403	334	10	2,281	878
National City	0	24	183	278	114	251	365	305	719	1,024	793	4	2,667	1,643
Oceanside	5	61	193	549	642	194	836	841	1,959	2,800	536	37	4,980	2,180
San Diego	55	376	2,019	3,597	4,864	2,879	7,743	8,773	13,172	21,945	10,677	190	46,412	24,467
Sheriff - Total	17	208	699	2,098	2,380	2,037	4,417	3,713	5,219	8,932	3,212	90	19,583	10,651
Del Mar	0	3	5	6	11	40	51	68	39	107	15	1	187	80
Encinitas	0	15	33	83	121	154	275	308	361	669	89	3	1,164	495
Imperial Beach	0	12	69	101	105	60	165	109	229	338	243	9	928	590
Lemon Grove	0	17	58	78	106	102	208	78	210	288	172	8	821	533
Poway	0	8	20	67	94	117	211	259	311	570	95	1	971	401
San Marcos	1	8	55	149	163	238	401	324	610	934	274	2	1,822	888
Santee	1	12	34	112	104	118	222	270	486	756	189	3	1,326	570
Solana Beach	0	2	9	34	42	75	117	111	56	167	23	2	352	185
Vista	1	37	154	321	414	343	757	457	863	1,320	451	12	3,041	1,721
Unincorporated	14	88	258	943	1,214	775	1,989	1,708	2,009	3,717	1,634	49	8,643	4,926
4S Ranch	0	0	2	7	23	19	42	43	47	90	18	0	159	69
Alpine	1	9	13	67	87	53	140	145	166	311	98	2	639	328
Fallbrook	3	8	21	84	139	122	261	197	276	473	110	4	960	487
Lakeside	4	10	26	164	117	99	216	211	308	519	191	0	1,130	611
Ramona	0	7	11	71	48	63	111	117	179	296	56	2	552	256
Spring Valley	1	23	86	216	258	121	379	269	357	626	509	0	1,840	1,214
Valley Center	2	9	18	74	70	57	127	107	98	205	80	1	515	310
Other Sheriff	0	6	4	204	6	15	21	21	45	66	27	0	328	262
California Highway Patrol	0	0	0	18	1	5	6	6	16	22	140	0	186	164
California State University San Marcos	0	1	0	3	1	9	10	11	40	51	0	0	65	14
San Diego State University	0	8	10	19	32	59	91	132	336	468	90	3	686	218
University of California San Diego	0	3	1	2	25	28	53	192	238	430	32	4	521	91
San Diego Harbor Police	0	3	6	13	1	14	15	311	201	512	0	1	549	37
California State Parks	0	0	2	1	1	2	3	39	18	57	1	1	64	7
TOTAL	90	845	4,018	7,920	9,936	6,995	16,931	18,418	28,972	47,390	19,974	411	97,168	49,778

NOTES: The FBI Crime Index includes homicide, rape, robbery, and aggravated assault in the violent category and burglary, larceny, and motor vehicle theft in the property category. The California Crime Index (CCI) includes all FBI Index crimes except larceny. "Sheriff-Total" includes the contract cities and the unincorporated area served by the Sheriff, as well as crimes reported in the Sheriff's new "other" category that includes the Sheriff's detention facilities, courts staffed by the Sheriff, and crimes reported to the Sheriff that occurred in a city not served by the Sheriff or a location for which jurisdiction could not be determined.

SOURCE: SANDAG

Appendix Table 15
VIOLENT CRIME CLEARANCE RATE BY JURISDICTION
San Diego Region, 2004, 2007, and 2008

	2004	2007	2008	Difference	
				2004-2008	2007-2008
Carlsbad	69%	41%	49%	-20%	8%
Chula Vista	34%	33%	35%	1%	2%
Coronado	--	--	--	--	--
El Cajon	39%	45%	36%	-3%	-8%
Escondido	46%	49%	47%	1%	-2%
La Mesa	68%	65%	58%	-9%	-7%
National City	28%	21%	22%	-6%	1%
Oceanside	43%	43%	41%	-2%	-1%
San Diego	53%	48%	49%	-3%	1%
Sheriff - Total	58%	47%	54%	-5%	7%
Del Mar	--	--	--	--	--
Encinitas	49%	41%	45%	-4%	4%
Imperial Beach	58%	51%	52%	-7%	1%
Lemon Grove	58%	49%	43%	-15%	-6%
Poway	45%	44%	63%	18%	19%
San Marcos	55%	37%	58%	3%	21%
Santee	69%	56%	64%	-6%	8%
Solana Beach	--	--	--	--	--
Vista	56%	41%	56%	-1%	14%
Unincorporated	68%	57%	63%	-5%	5%
4S Ranch	n/a	--	--	--	--
Alpine	60%	48%	52%	-8%	4%
Fallbrook	53%	41%	66%	13%	26%
Ramona	93%	61%	51%	-43%	-10%
Valley Center	67%	52%	50%	-17%	-1%
TOTAL	51%	46%	47%	-3%	2%

NOTES: "Sheriff-Total" includes the contract cities and the unincorporated area served by the San Diego County Sheriff's Department. Camp Pendleton is not included. "Unincorporated" includes 4S Ranch (6 months of 2007 and all of 2008), Alpine, Fallbrook, Lakeside, Ramona, Spring Valley, and Valley Center, as well as the unincorporated areas for which crime data are not individually shown (Campo, Julian, Pine Valley, Ranchita, and the unincorporated areas of Encinitas, Imperial Beach, Lemon Grove, Poway, San Marcos, Santee, and Vista). Clearance rates based on reported incidents or cases cleared numbering 30 or less are not computed for this table.

SOURCE: SANDAG

Appendix Table 16
PROPERTY CRIME CLEARANCE RATE BY JURISDICTION
San Diego Region, 2004, 2007, and 2008

	2004	2007	2008	Difference	
				2004-2008	2007-2008
Carlsbad	26%	10%	21%	-5%	11%
Chula Vista	14%	15%	16%	2%	1%
Coronado	11%	12%	22%	10%	9%
El Cajon	15%	16%	16%	1%	0%
Escondido	13%	15%	16%	3%	1%
La Mesa	18%	17%	13%	-5%	-5%
National City	18%	10%	14%	-4%	4%
Oceanside	13%	11%	12%	-1%	1%
San Diego	10%	10%	11%	0%	1%
Sheriff - Total	14%	12%	13%	0%	1%
Del Mar	--	--	--	--	--
Encinitas	15%	12%	12%	-4%	0%
Imperial Beach	11%	10%	11%	0%	1%
Lemon Grove	22%	18%	20%	-2%	2%
Poway	18%	14%	14%	-5%	0%
San Marcos	18%	16%	21%	3%	5%
Santee	15%	14%	19%	4%	5%
Solana Beach	--	--	--	--	--
Vista	14%	12%	13%	-1%	1%
Unincorporated	12%	11%	12%	-1%	1%
4S Ranch	n/a	--	--	--	--
Alpine	13%	9%	9%	-4%	1%
Fallbrook	11%	9%	12%	2%	3%
Ramona	20%	17%	16%	-4%	-1%
Valley Center	11%	13%	16%	4%	2%
TOTAL	13%	11%	13%	0%	1%

NOTES: "Sheriff-Total" includes the contract cities and the unincorporated area served by the San Diego County Sheriff's Department. Camp Pendleton is not included. "Unincorporated" includes 4S Ranch (6 months of 2007 and all of 2008), Alpine, Fallbrook, Lakeside, Ramona, Spring Valley, and Valley Center, as well as the unincorporated areas for which crime data are not individually shown (Campo, Julian, Pine Valley, Ranchita, and the unincorporated areas of Encinitas, Imperial Beach, Lemon Grove, Poway, San Marcos, Santee, and Vista). Clearance rates based on reported incidents or cases cleared numbering 30 or less are not computed for this table.

SOURCE: SANDAG

Appendix Table 17
DOLLAR VALUE OF PROPERTY STOLEN BY JURISDICTION
San Diego Region, 2004, 2007, and 2008

	2004	2007	2008	Change	
				2004-2008	2007-2008
Carlsbad	\$4,899,601	\$9,329,553	\$6,806,737	39%	-27%
Chula Vista	23,490,562	26,510,763	26,022,780	11%	-2%
Coronado	1,243,404	1,290,186	1,195,438	-4%	-7%
El Cajon	11,897,051	12,981,609	11,568,795	-3%	-11%
Escondido	12,453,424	8,870,575	9,580,399	-23%	8%
La Mesa	12,280,454	5,609,481	3,771,133	-69%	-33%
National City	7,167,043	7,379,198	7,974,320	11%	8%
Oceanside	10,404,715	9,031,000	7,860,690	-24%	-13%
San Diego	112,325,318	132,900,129	122,403,091	9%	-8%
Sheriff - Total	51,605,605	48,990,341	56,866,190	10%	16%
Del Mar	997,935	926,695	731,582	-27%	-21%
Encinitas	2,813,560	2,949,443	2,951,825	5%	<1%
Imperial Beach	1,850,147	2,495,396	3,364,688	82%	35%
Lemon Grove	1,894,963	1,975,663	1,630,241	-14%	-17%
Poway	2,088,613	2,358,304	2,500,570	20%	6%
San Marcos	3,395,298	3,849,259	4,919,595	45%	28%
Santee	2,300,273	2,879,318	4,831,353	110%	68%
Solana Beach	1,045,086	1,026,521	1,039,949	<-1%	1%
Vista	6,538,814	5,017,407	5,234,854	-20%	4%
Unincorporated	28,680,916	25,512,335	29,661,533	3%	16%
4S Ranch	n/a	113,801	2,073,069	--	--
Alpine	2,059,404	1,627,260	2,009,602	-2%	23%
Fallbrook	3,148,786	2,325,075	1,987,458	-37%	-15%
Ramona	1,059,615	1,124,762	2,090,144	97%	86%
Valley Center	1,569,641	1,656,217	1,492,089	-5%	-10%
California Highway Patrol	410,608	376,019	1,011,224	146%	169%
California State University San Marcos	19,484	42,517	27,245	40%	-36%
San Diego State University	684,664	1,157,684	1,236,584	81%	7%
University of California San Diego	613,396	616,482	570,645	-7%	-7%
San Diego Harbor Police	743,291	1,163,004	1,494,007	101%	28%
California State Parks	116,514	173,824	239,974	106%	38%
TOTAL	\$250,355,134	\$266,422,365	\$258,629,252	3%	-3%

NOTES: Dollar amounts are not adjusted for inflation and reflect the reported dollar values associated with stolen items reported by individual jurisdictions. "Sheriff-Total" includes the contract cities and the unincorporated area served by the San Diego County Sheriff's Department. Camp Pendleton is not included. "Unincorporated" includes 4S Ranch (6 months of 2007 and all of 2008), Alpine, Fallbrook, Lakeside, Ramona, Spring Valley, and Valley Center, as well as the unincorporated areas for which crime data are not individually shown (Campo, Julian, Pine Valley, Ranchita, and the unincorporated areas of Encinitas, Imperial Beach, Lemon Grove, Poway, San Marcos, Santee, and Vista).

SOURCE: SANDAG

Appendix Table 18
DOLLAR VALUE OF PROPERTY RECOVERED BY JURISDICTION
San Diego Region, 2004, 2007, and 2008

	2004	2007	2008	Change	
				2004-2008	2007-2008
Carlsbad	\$1,763,787	\$1,847,860	\$1,152,685	-35%	-38%
Chula Vista	10,671,401	12,967,166	11,133,503	4%	-14%
Coronado	279,693	396,581	179,653	-36%	-55%
El Cajon	6,086,351	5,878,084	4,608,671	-24%	-22%
Escondido	6,844,538	3,819,858	3,776,015	-45%	-1%
La Mesa	2,148,688	2,914,458	1,810,979	-16%	-38%
National City	3,921,863	3,610,678	3,631,295	-7%	1%
Oceanside	4,268,694	4,002,520	3,209,276	-25%	-20%
San Diego	52,094,176	52,937,962	40,326,107	-23%	-24%
Sheriff - Total	21,873,553	18,551,159	18,687,376	-15%	1%
Del Mar	288,053	386,687	189,035	-34%	-51%
Encinitas	1,218,507	1,287,112	622,922	-49%	-52%
Imperial Beach	985,961	1,093,726	1,169,131	19%	7%
Lemon Grove	1,073,563	1,050,067	558,257	-48%	-47%
Poway	591,610	676,197	831,439	41%	23%
San Marcos	1,811,411	1,433,312	1,408,776	-22%	-2%
Santee	911,735	1,058,980	2,557,182	180%	141%
Solana Beach	257,568	353,340	147,434	-43%	-58%
Vista	2,800,825	1,920,983	2,008,070	-28%	5%
Unincorporated	11,934,320	9,290,755	9,195,130	-23%	-1%
4S Ranch	n/a	50,728	127,699	--	--
Alpine	683,332	550,459	754,486	10%	37%
Fallbrook	847,497	837,986	568,874	-33%	-32%
Ramona	497,504	343,046	213,935	-57%	-38%
Valley Center	744,970	681,336	554,593	-26%	-19%
California Highway Patrol	128,740	167,900	456,940	255%	172%
California State University San Marcos	3,265	1,002	2,301	-30%	130%
San Diego State University	131,440	570,510	186,684	42%	-67%
University of California San Diego	139,427	132,411	93,384	-33%	-29%
San Diego Harbor Police	19,861	66,228	588,938	2865%	789%
California State Parks	5,106	14,150	1,109	-78%	-92%
TOTAL	\$110,380,583	\$107,878,527	\$89,844,916	-19%	-17%

NOTES: Dollar amounts are not adjusted for inflation and reflect the reported dollar values associated with stolen items reported by individual jurisdictions. "Sheriff-Total" includes the contract cities and the unincorporated area served by the San Diego County Sheriff's Department. Camp Pendleton is not included. "Unincorporated" includes 4S Ranch (6 months of 2007 and all of 2008), Alpine, Fallbrook, Lakeside, Ramona, Spring Valley, and Valley Center, as well as the unincorporated areas for which crime data are not individually shown (Campo, Julian, Pine Valley, Ranchita, and the unincorporated areas of Encinitas, Imperial Beach, Lemon Grove, Poway, San Marcos, Santee, and Vista).

SOURCE: SANDAG

**Appendix Table 19
PROPERTY RECOVERY RATE BY JURISDICTION
San Diego Region, 2004, 2007, and 2008**

	2004	2007	2008	Difference	
				2004-2008	2007-2008
Carlsbad	36%	20%	17%	-19%	-3%
Chula Vista	45%	49%	43%	-3%	-6%
Coronado	22%	31%	15%	-7%	-16%
El Cajon	51%	45%	40%	-11%	-5%
Escondido	55%	43%	39%	-16%	-4%
La Mesa	17%	52%	48%	31%	-4%
National City	55%	49%	46%	-9%	-3%
Oceanside	41%	44%	41%	0%	-3%
San Diego	46%	40%	33%	-13%	-7%
Sheriff - Total	42%	38%	33%	-9%	-5%
Del Mar	29%	42%	26%	-3%	-16%
Encinitas	43%	44%	21%	-22%	-23%
Imperial Beach	53%	44%	35%	-19%	-9%
Lemon Grove	57%	53%	34%	-22%	-19%
Poway	28%	29%	33%	5%	5%
San Marcos	53%	37%	29%	-24%	-8%
Santee	40%	37%	53%	13%	16%
Solana Beach	25%	34%	14%	-10%	-20%
Vista	43%	38%	38%	-4%	0%
Unincorporated	42%	36%	31%	-11%	-5%
4S Ranch	n/a	45%	6%	--	--
Alpine	33%	34%	38%	4%	4%
Fallbrook	27%	36%	29%	2%	-7%
Ramona	47%	30%	10%	-37%	-20%
Valley Center	47%	41%	37%	-10%	-4%
California Highway Patrol	31%	45%	45%	14%	1%
California State University San Marcos	17%	2%	8%	-8%	6%
San Diego State University	19%	49%	15%	-4%	-34%
University of California San Diego	23%	21%	16%	-6%	-5%
San Diego Harbor Police	3%	6%	39%	37%	34%
California State Parks	4%	8%	0%	-4%	-8%
TOTAL	44%	40%	35%	-9%	-5%

NOTES: "Sheriff-Total" includes the contract cities and the unincorporated area served by the San Diego County Sheriff's Department. Camp Pendleton is not included. "Unincorporated" includes 4S Ranch (6 months of 2007 and all of 2008), Alpine, Fallbrook, Lakeside, Ramona, Spring Valley, and Valley Center, as well as the unincorporated areas for which crime data are not individually shown (Campo, Julian, Pine Valley, Ranchita, and the unincorporated areas of Encinitas, Imperial Beach, Lemon Grove, Poway, San Marcos, Santee, and Vista).

SOURCE: SANDAG

**Appendix Table 20
POPULATION BY JURISDICTION
San Diego Region, 2004, 2007, and 2008**

	2004	2007	2008	Change	
				2004-2008	2007-2008
Carlsbad	92,695	101,398	103,811	12%	2%
Chula Vista	208,675	227,863	231,305	11%	2%
Coronado	26,591	22,968	23,101	-13%	1%
El Cajon	97,670	97,313	97,934	<1%	1%
Escondido	140,328	141,874	143,389	2%	1%
La Mesa	56,007	56,286	56,666	1%	1%
National City	56,018	61,146	61,194	9%	<1%
Oceanside	172,866	176,755	178,806	3%	1%
San Diego	1,295,147	1,317,625	1,336,865	3%	1%
Sheriff - Total	831,490	857,445	870,112	5%	1%
Del Mar	4,543	4,553	4,580	1%	1%
Encinitas	62,463	63,298	63,864	2%	1%
Imperial Beach	27,799	27,726	28,200	1%	2%
Lemon Grove	25,590	25,467	25,611	<1%	1%
Poway	50,534	50,862	51,103	1%	<1%
San Marcos	66,850	79,863	82,743	24%	4%
Santee	54,084	55,193	56,068	4%	2%
Solana Beach	13,396	13,427	13,500	1%	1%
Vista	94,030	95,020	95,770	2%	1%
Unincorporated	432,201	442,036	448,673	4%	2%
4S Ranch	n/a	16,513	16,767	--	2%
Alpine	27,848	28,977	29,421	6%	2%
Fallbrook	49,471	50,200	50,965	3%	2%
Lakeside	52,872	53,247	54,055	2%	2%
Ramona	35,300	35,685	36,223	3%	2%
Spring Valley	70,598	70,868	71,949	2%	2%
Valley Center	21,053	22,388	22,732	8%	2%
Camp Pendleton	35,527	39,459	43,091	21%	9%
TOTAL	3,013,014	3,100,132	3,146,274	4%	1%
Occupied Households	1,048,197	1,081,234	1,089,451	4%	1%
Registered Vehicles	2,202,352	2,353,063	2,343,062	6%	<-1%
Female Population	1,508,367	1,556,919	1,577,542	5%	1%

NOTES: Population figures are based on current California Department of Finance estimates. "Sheriff-Total" includes contract cities and the unincorporated area served by the San Diego County Sheriff's Department. Camp Pendleton is not included. "Unincorporated" includes 4S Ranch (2007 and 2008), Alpine, Fallbrook, Lakeside, Ramona, Spring Valley, and Valley Center, as well as the unincorporated areas not shown (Campo, Julian, Pine Valley, Ranchita, and the unincorporated areas of Encinitas, Imperial Beach, Lemon Grove, Poway, San Marcos, Santee, and Vista).

SOURCES: California Department of Finance; SANDAG Estimates August 2008